



Customer information packet

FPM2531TS-5

25HP, 1760RPM, 3PH, 60HZ, 284TS, 3956M, ODP, F1

Class - None

Division - Not Applicable

Specifications

Enclosure	ODP
Frame	284TS
Frame Material	Steel
Frequency	60.00 Hz
Haz Area Class and Group	None
Haz Area Division	Not Applicable
Motor Letter Type	Three Phase
Output @ Frequency	25.000 HP @ 60 HZ
Phase	3
Synchronous Speed @ Frequency	1800 RPM @ 60 HZ
Voltage @ Frequency	575.0 V @ 60 HZ
Agency Approvals	UL CSA EEV
Ambient Temperature	40 °C
Auxillary Box	No Auxillary Box
Auxillary Box Lead Termination	None
Base Indicator	Rigid
Bearing Grease Type	Polyrex EM (-20F +300F)
Blower	None
Current @ Voltage	23.000 A @ 575.0 V
Design Code	B
Drip Cover	No Drip Cover
Duty Rating	CONT
Efficiency @ 100% Load	92.4 %
Electrically Isolated Bearing	Not Electrically Isolated
Feedback Device	NO FEEDBACK
Front Face Code	Standard
Front Shaft Indicator	None
Heater Indicator	No Heater
High Voltage Full Load Amps	23.0 a
Insulation Class	F
Inverter Code	Not Inverter

Part detail

Revision	H
Type	AC
Mech. spec.	39R082
Base	
Status	PRD/A
Elec. spec.	39WGX989
Layout	39LYR082
Eff. date	11-14-2023
CD Diagram	CD0382
Poles	04
Leads	6#10
Proprietary	False
Created date	07-20-2016

KVA Code	F
Lifting Lugs	Standard Lifting Lugs
Locked Bearing Indicator	No Locked Bearing
Motor Lead Exit	Ko Box
Motor Lead Quantity/Wire Size	6 @ 10 AWG
Motor Lead Termination	Flying Leads
Motor Standards	NEMA
Motor Type	3956M
Mounting Arrangement	F1
Number of Poles	4
Overall Length	23.56 IN
Power Factor	87
Product Family	Fire Pump Motor
Pulley End Bearing Type	Ball
Pulley Face Code	Standard
Pulley Shaft Indicator	Standard
Rodent Screen	None
Service Factor	1.15
Shaft Diameter	1.625 IN
Shaft Extension Location	Pulley End
Shaft Ground Indicator	No Shaft Grounding
Shaft Rotation	Reversible
Shaft Slinger Indicator	No Slinger
Speed	1760 rpm
Speed Code	Single Speed
Starting Method	Wye Start - Delta Run
Thermal Device - Bearing	None
Thermal Device - Winding	None
Vibration Sensor Indicator	No Vibration Sensor
Winding Thermal 1	None
Winding Thermal 2	None

Nameplate

NP3454L

CAT.NO.	FPM2531TS-5	CUST P/N		I.P.	23
SPEC.	39R082X989H2	SER.NO.		FRAME	284TS
HZ	60	HP	25	RPM	1760
VOLTS	575	CODE	F	VOLTS	
AMPS	23	DES	B	AMPS	
EFF	92.4	SER.F.	1.15	PF	87
RATING	40C AMB-CONT	DE BRG	6311	GREASE	POLYREX EM
BLANK		ODE BRG	6208	MTR. WT.	320
		CLASS	F	PH	3
		ENCL	ODP	CC	010A
HTR-VOLTS		HTR-AMPS		HTR-WATTS	

AC Induction Motor Performance Data

Record # 58303

Typical performance - not guaranteed values

Winding: 39WGX989-R001		Type: 3956M		Enclosure: OPSB	
Nameplate Data			575 V, 60 Hz: Single Voltage Motor		
Rated Output (HP)	25	Full Load Torque	75.1 LB-FT		
Volts	575	Start Configuration	direct on line		
Full Load Amps	23	Breakdown Torque	200 LB-FT		
R.P.M.	1760	Pull-up Torque	98.1 LB-FT		
Hz	60	Locked-rotor Torque	119 LB-FT		
NEMA Design Code	B	Starting Current	137 A		
Service Factor (S.F.)	1.15	No-load Current	7.08 A		
NEMA Nom. Eff.	92.4	Line-line Res. @ 25°C	0.615 Ω		
Rating - Duty	40C	Temp. Rise @ Rated Load	52°C		
S.F. Amps	AMB-CONT	Temp. Rise @ S.F. Load	66°C		
		Locked-rotor Power Factor	32.1		
		Rotor inertia	2.45 LB-FT ²		

Load Characteristics 575 V, 60 Hz, 25 HP

% of Rated Load	25	50	75	100	125	150	S.F.
Power Factor	58	77	85	87	88	87	88
Efficiency	91.7	93.5	93.4	92.4	91	89.5	91.6
Speed	1790	1781	1771	1759	1746	1731	1751
Line amperes	9	12.8	18	23.4	29.1	36.1	26.8

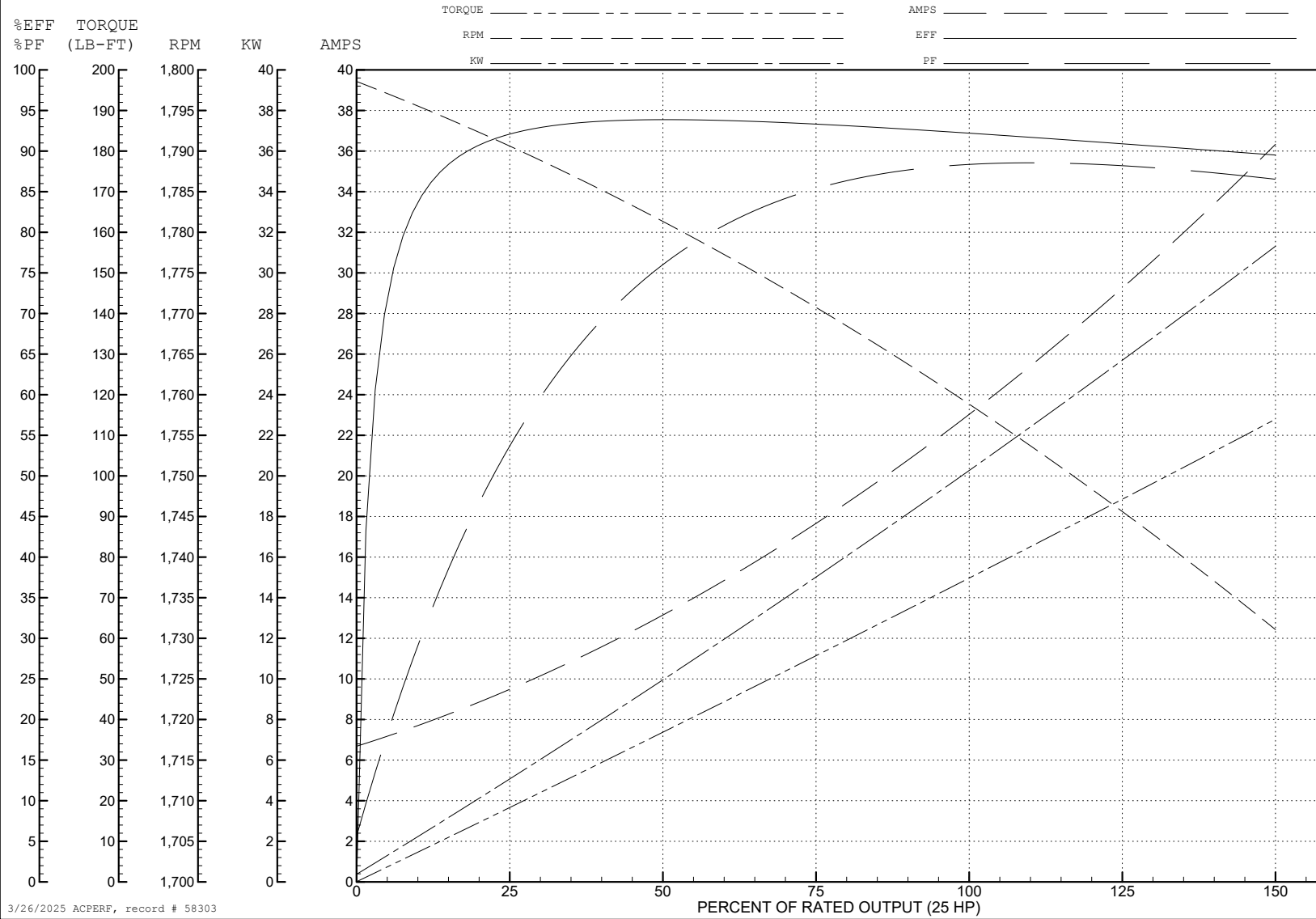
ABB Motors and Mechanical Inc.

WINDING # 39WGX989

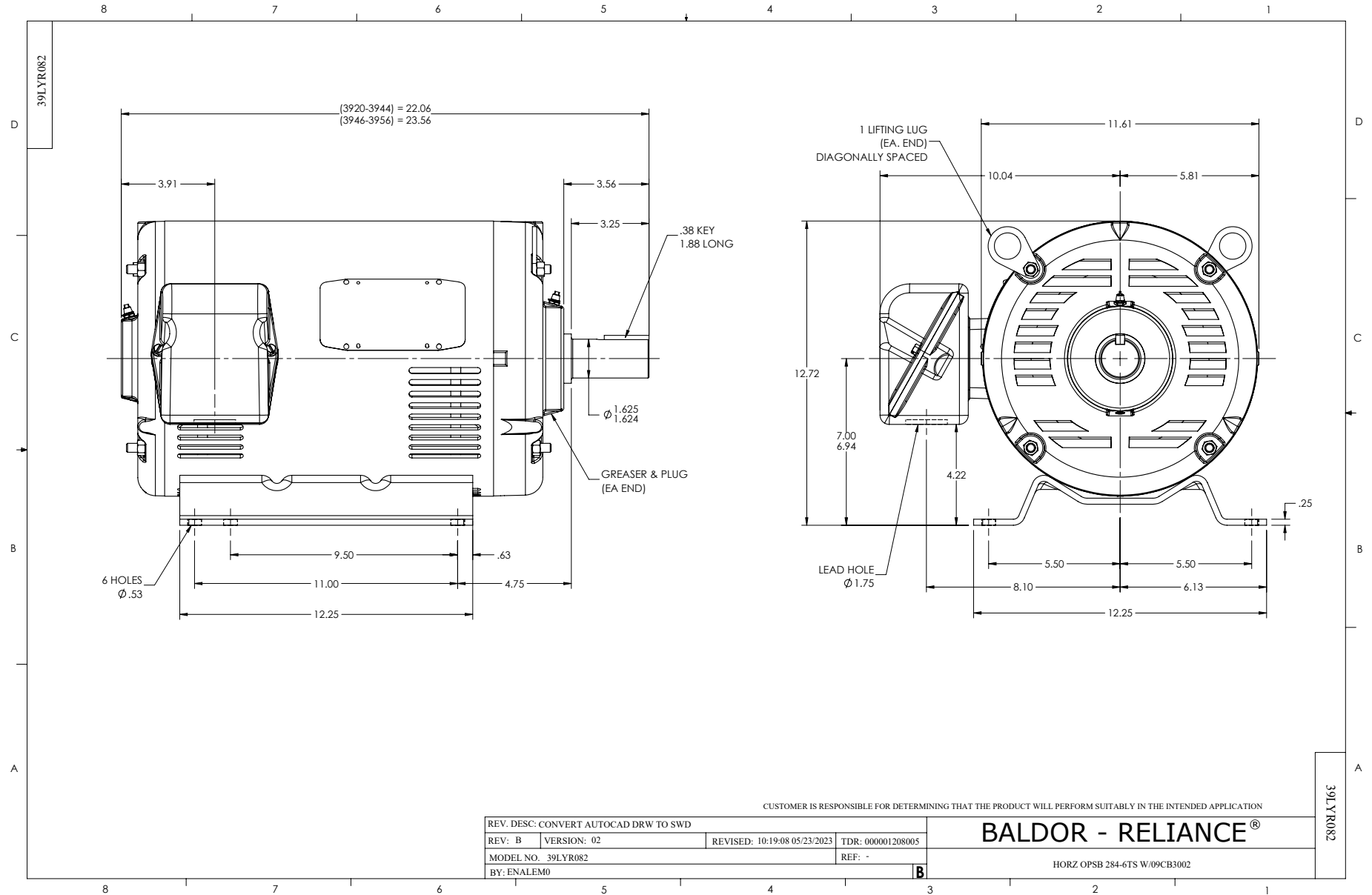
Typical performance - not guaranteed values.

25 HP 3 PH 60 HZ 1760 RPM 575 V 3956M

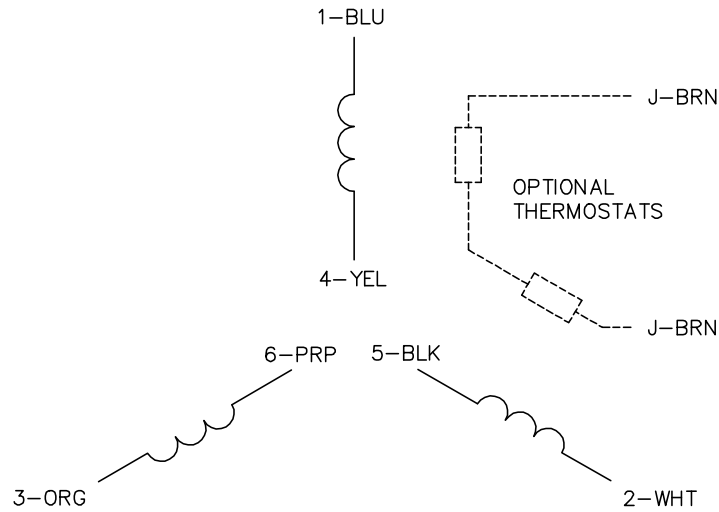
TORQUES (LB-FT): PO=200 PU=98.1 LR=119 LRA=137



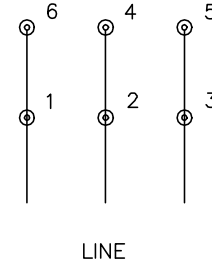
3/26/2025 ACPERF, record # 58303



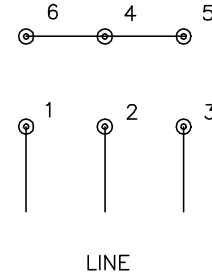
CD0382



RUN CONNECTION (1D)



START CONNECTION (1Y)



NOTES:

1. INTERCHANGE ANY TWO LINE LEADS TO REVERSE ROTATION.
2. OPTIONAL THERMOSTATS ARE PROVIDED WHEN SPECIFIED.
3. ACTUAL NUMBER OF INTERNAL PARALLEL CIRCUITS MAY BE A MULTIPLE OF THOSE SHOWN ABOVE.
4. LEAD COLORS ARE OPTIONAL. LEADS MUST ALWAYS BE NUMBERED AS SHOWN.
5. FOR ACROSS-THE-LINE STARTING, USE 'RUN' CONNECTION.

CD0382

REV. DESC: ADD CLASS CONN00000007		
REV. LTR: F	VERSION: 01	TDR: 000001099922
FILE: \AAA\00005\243	REVISED: 09:05:32 02/19/2019	BY: ENBRIRO
MTL: -	© □	

BALDOR - RELIANCE®

3PH, SV, 6 LEADS, Y START/D RUN

SH 1 of 1