

ABB BALDOR RELIANCE III

Customer information packet

FPM2514T

20//15HP, 3460//2900RPM, 3PH, 60//50HZ, 254T

Class - None

Division - Not Applicable

Specifications

| | |
|---------------------------------------|--|
| Enclosure | OPSB |
| Frame | 254T |
| Frame Material | Steel |
| Frequency | 50.00 Hz 60.00 Hz |
| Haz Area Class and Group | None |
| Haz Area Division | Not Applicable |
| Motor Letter Type | Three Phase |
| Output @ Frequency | 15.000 HP @ 50 HZ 20.000 HP @ 60 HZ |
| Phase | 3 |
| Synchronous Speed @ Frequency | 3600 RPM @ 60 HZ |
| Voltage @ Frequency | 380.0 V @ 50 HZ 230.0 V @ 60 HZ 190.0 V @ 50 HZ 460.0 V @ 60 HZ |
| Agency Approvals | CSA EEV CSA UL UR |
| Ambient Temperature | 40 °C |
| Auxiliary Box | NO AUXILLARY BOX |
| Auxiliary Box Lead Termination | None |
| Base Indicator | Rigid |
| Bearing Grease Type | Polyrex EM (-20F +300F) |
| Blower | None |
| Current @ Voltage | 42.000 A @ 190.0 V 46.000 A @ 230.0 V 23.000 A @ 460.0 V 21.000 A @ 380.0 V |
| Design Code | B |
| Drip Cover | No Drip Cover |

Part Detail

| | |
|---------------------|------------|
| Revision | K |
| Type | AC |
| Mech. spec. | 37N756 |
| Base | |
| Status | PRD/A |
| Elec. spec. | 37WGR893 |
| Layout | 37LYN756 |
| Eff. date | 06-08-2023 |
| CD Diagram | CD0104 |
| Poles | 02 |
| Leads | 12#12 |
| Proprietary | False |
| Created date | 09-23-2015 |

| | |
|--------------------------------------|---------------------------|
| Duty Rating | CONT |
| Efficiency @ 100% Load | 90.2 % |
| Electrically Isolated Bearing | Not Electrically Isolated |
| Feedback Device | NO FEEDBACK |
| Front Face Code | Standard |
| Front Shaft Indicator | None |
| Heater Indicator | No Heater |
| High Voltage Full Load Amps | 21.0 a |
| Insulation Class | F |
| Inverter Code | Inverter Ready |
| KVA Code | G |
| Lifting Lugs | Standard Lifting Lugs |
| Locked Bearing Indicator | No Locked Bearing |
| Motor Lead Exit | Ko Box |
| Motor Lead Quantity/Wire Size | 12 @ 12 AWG |
| Motor Lead Termination | Flying Leads |
| Motor Standards | NEMA |
| Motor Type | 3742M |
| Mounting Arrangement | F1 |
| Number of Poles | 2 |
| Overall Length | 22.25 IN |
| Power Factor | 90 |
| Product Family | General Purpose |
| Pulley End Bearing Type | Ball |
| Pulley Face Code | Standard |
| Pulley Shaft Indicator | Standard |
| Rodent Screen | None |
| RoHS Status | ROHS COMPLIANT |
| Service Factor | 1.15 |
| Shaft Diameter | 1.625 IN |
| Shaft Extension Location | Pulley End |
| Shaft Ground Indicator | No Shaft Grounding |
| Shaft Rotation | Reversible |
| Shaft Slinger Indicator | No Slinger |

| | |
|-----------------------------------|-----------------------|
| Speed | 2860 rpm 3450 rpm |
| Speed Code | Single Speed |
| Starting Method | Wye Start - Delta Run |
| Thermal Device - Bearing | None |
| Thermal Device - Winding | None |
| Vibration Sensor Indicator | No Vibration Sensor |
| Winding Thermal 1 | None |
| Winding Thermal 2 | None |

Nameplate

NP3454L

| | | | | | |
|------------------|--------------|-----------------|------|------------------|------------|
| CAT.NO. | FPM2514T | CUST P/N | | I.P. | 23 |
| SPEC. | 37N756R893H2 | SER.NO. | | FRAME | 254T |
| HZ | 60 | HP | 20 | RPM | 3450 |
| | | | | HZ | 50 |
| | | | | HP | 15 |
| | | | | RPM | 2860 |
| VOLTS | 230/460 | CODE | G | VOLTS | 190/380 |
| | | | | CODE | G |
| AMPS | 46/23 | DES | B | AMPS | 42/21 |
| | | | | DES | B |
| EFF | 90.2 | SER.F. | 1.15 | PF | 90 |
| | | | | EFF | 89.5 |
| | | | | SER.F. | 1.15 |
| | | | | PF | 90 |
| RATING | 40C AMB-CONT | DE BRG | 6309 | GREASE | POLYREX EM |
| BLANK | | ODE BRG | 6206 | MTR. WT. | 145 |
| | | CLASS | F | PH | 3 |
| | | ENCL | OPSB | CC | 010A |
| HTR-VOLTS | | HTR-AMPS | | HTR-WATTS | |

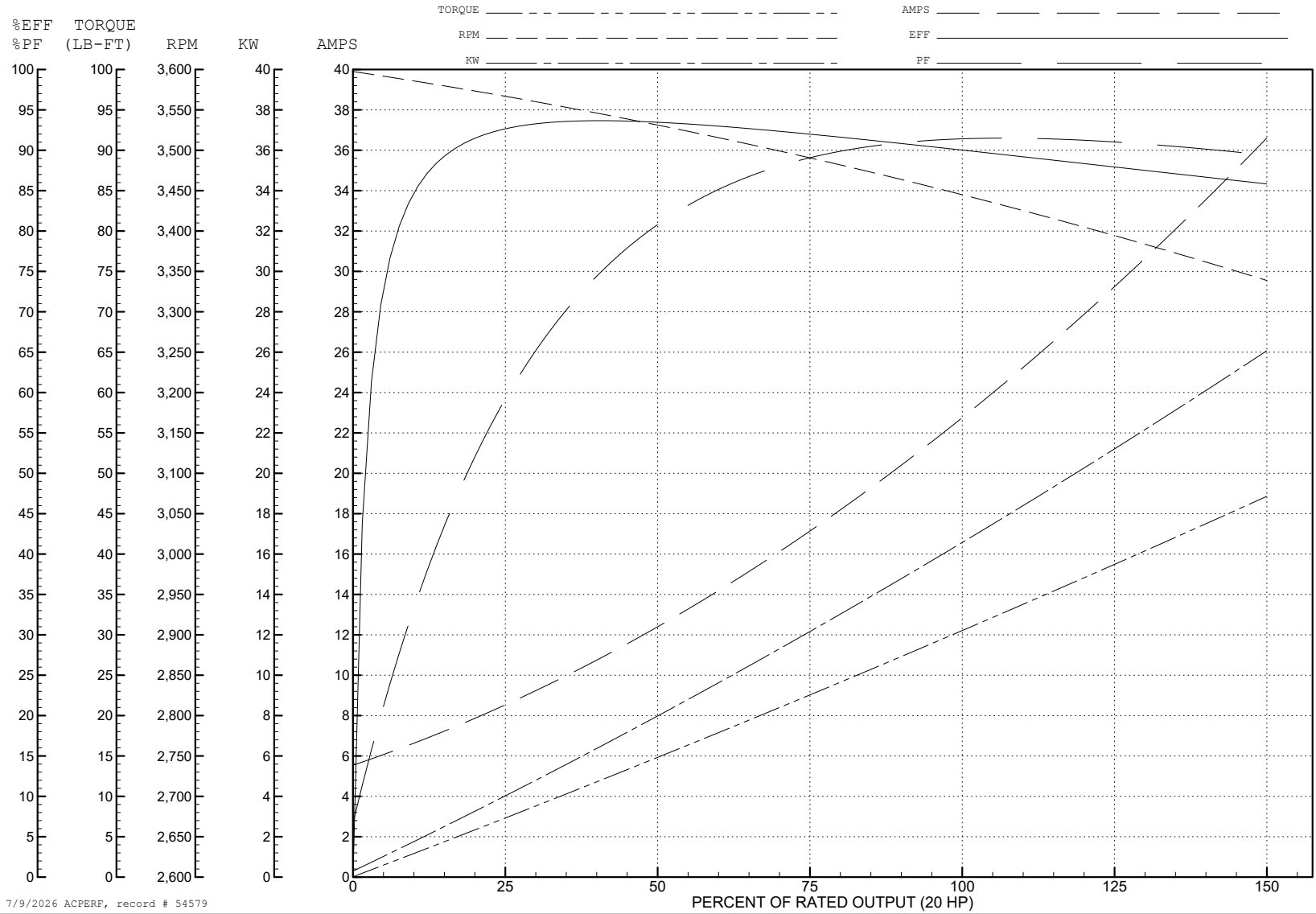
ABB Motors and Mechanical Inc.

WINDING # 37WGR893

Typical performance - not guaranteed values.

20 HP 3 PH 60 HZ 3447.9 RPM 460 V 3742M

TORQUES (LB-FT): PO=89.4 PU=45.9 LR=51.7 LRA=137



7/9/2026 ACPERF, record # 54579

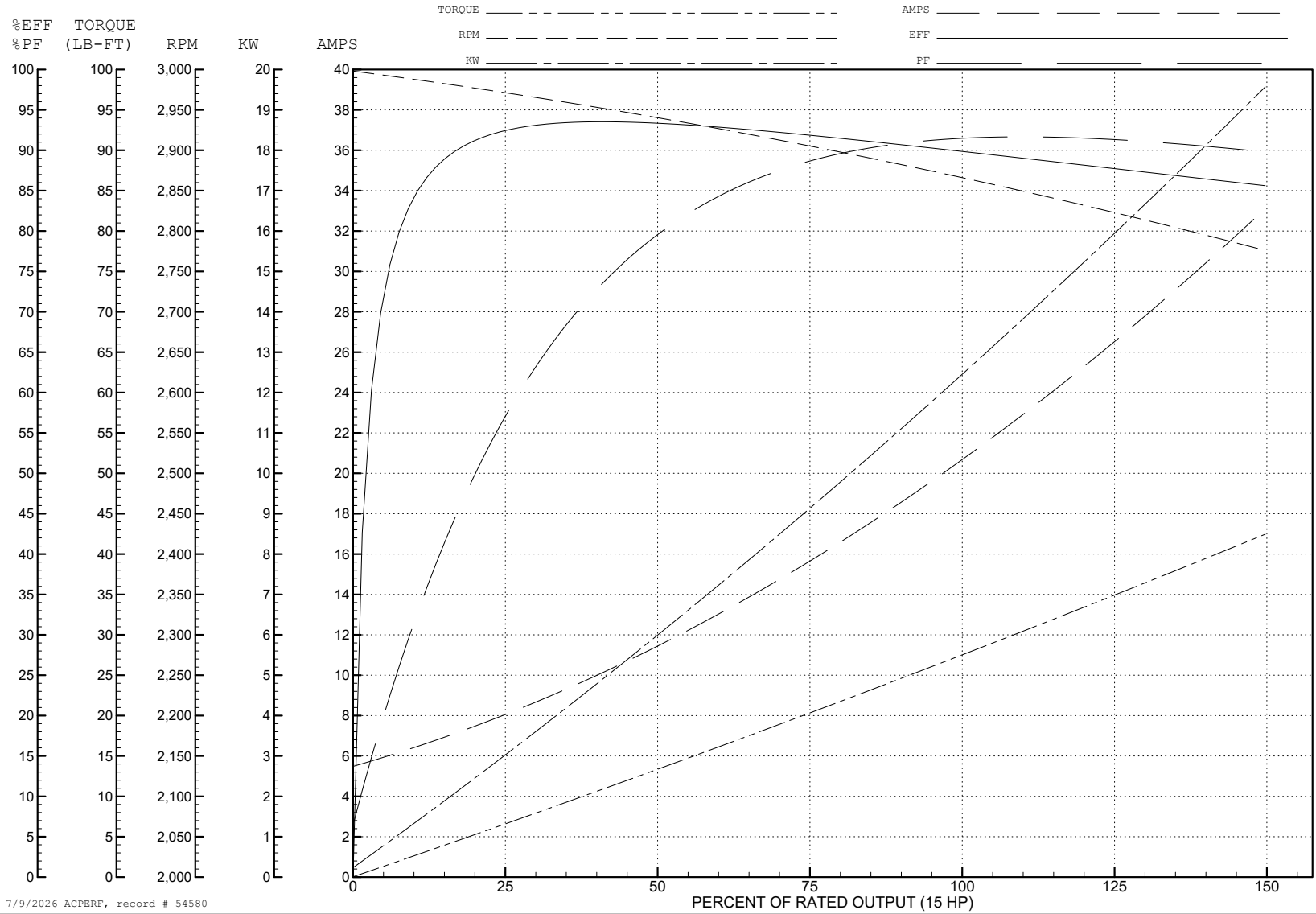
ABB Motors and Mechanical Inc.

WINDING # 37WGR893

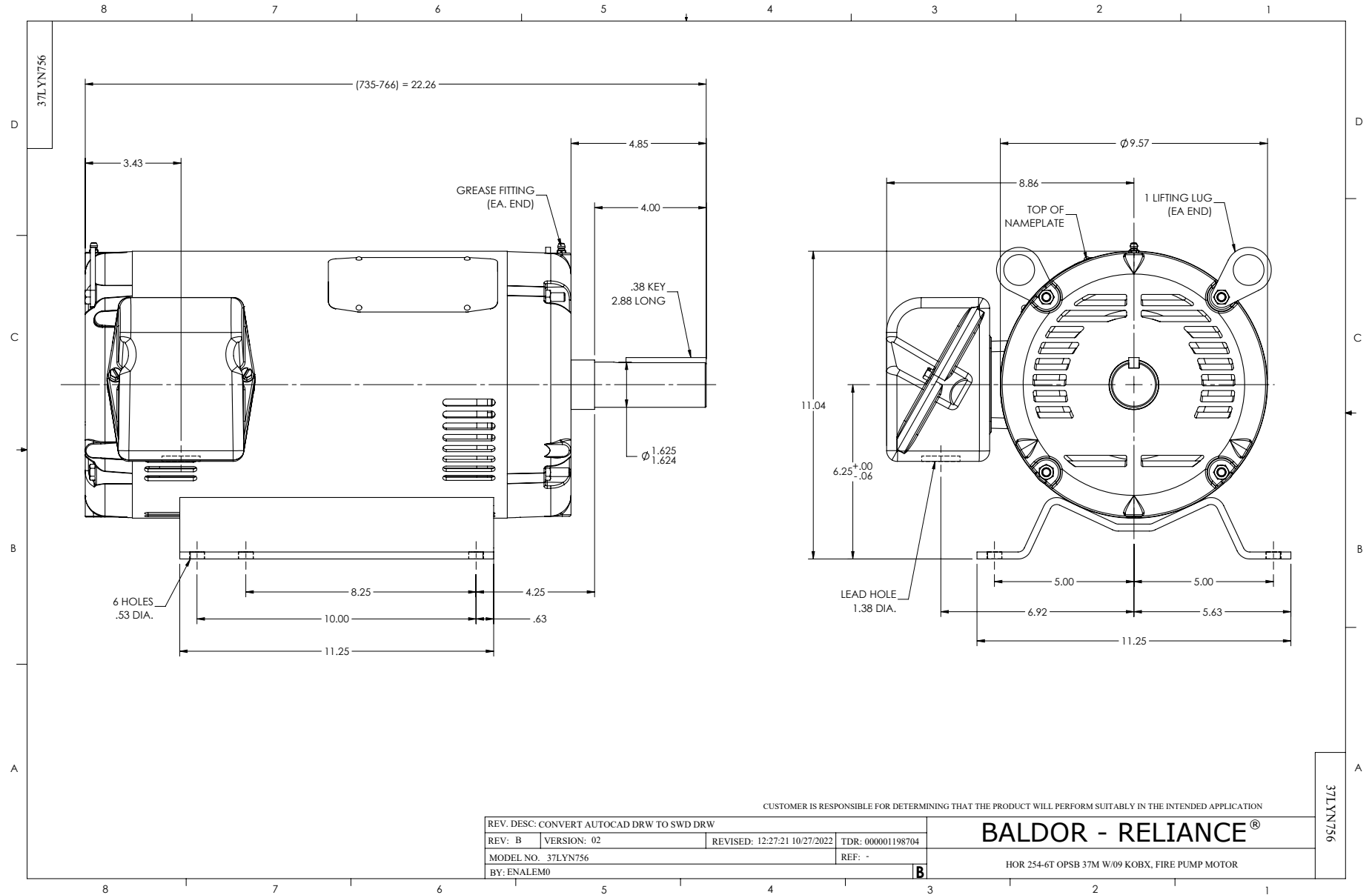
Typical performance - not guaranteed values.

15 HP 3 PH 50 HZ 2866.5 RPM 380 V 3742M

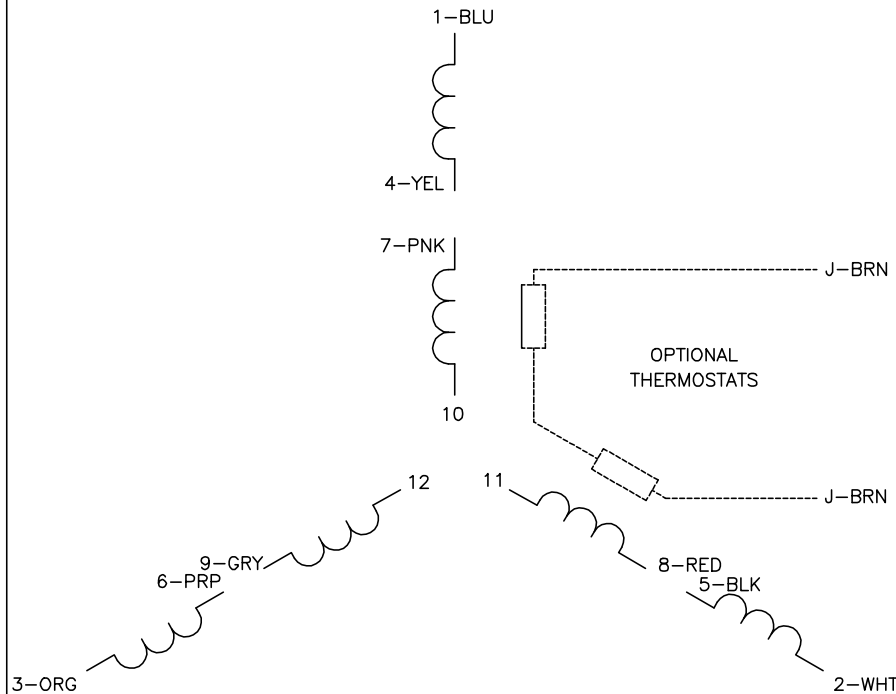
TORQUES (LB-FT): PO=86.8 PU=43.4 LR=53.1 LRA=138



7/9/2026 ACPERF, record # 54580

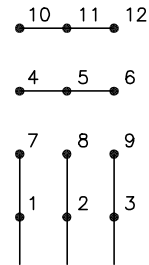


CD0104



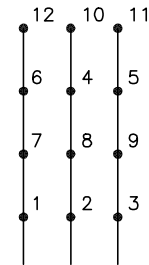
LOW VOLTAGE

START (2Y)



LINE

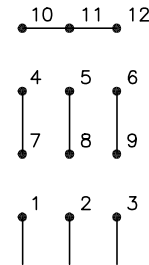
RUN (2D)



LINE

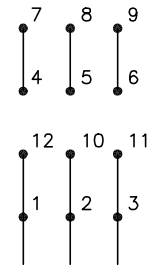
HIGH VOLTAGE

START (1Y)



LINE

RUN (1D)



LINE

NOTES:

1. INTERCHANGE ANY TWO LINE LEADS TO REVERSE ROTATION.
2. OPTIONAL THERMOSTATS ARE PROVIDED WHEN SPECIFIED.
3. ACTUAL NUMBER OF INTERNAL PARALLEL CIRCUITS MAY BE A MULTIPLE OF THOSE SHOWN ABOVE.
4. LEAD COLORS ARE OPTIONAL. LEADS MUST ALWAYS BE NUMBERED AS SHOWN.

CD0104

| | | |
|-----------------------------------|------------------------------|-------------------|
| REV. DESC: ADD CLASS CONN00000007 | | |
| REV. LTR: D | VERSION: 01 | TDR: 000001099922 |
| FILE: \AAA\00008\377 | REVISED: 09:02:55 02/19/2019 | BY: ENBRIRO |
| MTL: - | © □ | |

BALDOR - RELIANCE®

3PH, DV, 12 LEADS, Y START/D RUN

SH 1 of 1