



Customer information packet

FDM3542

.75HP, 1725RPM, 3PH, 60HZ, 56, 3420M, TEFC, F1

Class - None

Division - Not Applicable

Specifications

| | |
|--------------------------------|---|
| Enclosure | TEFC |
| Frame | 56 |
| Frame Material | Steel |
| Frequency | 60.00 Hz |
| Haz Area Class and Group | None |
| Haz Area Division | Not Applicable |
| Motor Letter Type | Three Phase |
| Output @ Frequency | .750 HP @ 60 HZ |
| Phase | 3 |
| Synchronous Speed @ Frequency | 1800 RPM @ 60 HZ |
| Voltage @ Frequency | 208.0 V @ 60 HZ 230.0 V @ 60 HZ 460.0 V @ 60 HZ |
| Agency Approvals | CSA UR |
| Ambient Temperature | 40 °C |
| Auxillary Box | No Auxillary Box |
| Auxillary Box Lead Termination | None |
| Base Indicator | Rigid |
| Bearing Grease Type | Polyrex EM (-20F +300F) |
| Blower | None |
| Current @ Voltage | 3.200 A @ 208.0 V 3.000 A @ 230.0 V 1.500 A @ 460.0 V |
| Design Code | B |
| Drip Cover | No Drip Cover |
| Duty Rating | CONT |
| Efficiency @ 100% Load | 75.5 % |
| Electrically Isolated Bearing | Not Electrically Isolated |
| Feedback Device | NO FEEDBACK |
| Front Shaft Indicator | None |
| Heater Indicator | No Heater |

Part detail

| | |
|--------------|------------|
| Revision | A |
| Type | AC |
| Mech. spec. | 34M734 |
| Base | |
| Status | PRD/A |
| Elec. spec. | 34WGR707 |
| Layout | 34LYM734 |
| Eff. date | 04-23-2021 |
| CD Diagram | CD0005 |
| Poles | 04 |
| Leads | 9#18 |
| Proprietary | False |
| Created date | 01-29-2021 |

| | |
|-------------------------------|---------------------|
| High Voltage Full Load Amps | 1.5 a |
| Insulation Class | B |
| Inverter Code | Not Inverter |
| KVA Code | M |
| Lifting Lugs | No Lifting Lugs |
| Locked Bearing Indicator | No Locked Bearing |
| Motor Lead Quantity/Wire Size | 9 @ 18 AWG |
| Motor Lead Termination | Flying Leads |
| Motor Standards | NEMA |
| Motor Type | 3420M |
| Mounting Arrangement | F1 |
| Number of Poles | 4 |
| Overall Length | 11.35 IN |
| Power Factor | 64 |
| Product Family | General Purpose |
| Pulley End Bearing Type | Ball |
| Pulley Face Code | Standard |
| Pulley Shaft Indicator | Standard |
| Rodent Screen | None |
| Service Factor | 1.25 |
| Shaft Diameter | 0.625 IN |
| Shaft Ground Indicator | No Shaft Grounding |
| Shaft Rotation | Reversible |
| Shaft Slinger Indicator | Shaft Slinger |
| Speed | 1725 rpm |
| Speed Code | Single Speed |
| Starting Method | Direct on line |
| Thermal Device - Bearing | None |
| Thermal Device - Winding | None |
| Vibration Sensor Indicator | No Vibration Sensor |
| Winding Thermal 1 | None |
| Winding Thermal 2 | None |

Nameplate

| NP1279L | |
|---------------------|---|
| CAT.NO. | FDM3542 |
| SPEC. | 34M734R707G2 |
| HP | .75 |
| VOLTS | 208-230/460 |
| AMP | 3.2-3/1.5 |
| RPM | 1725 |
| FRAME | 56 HZ 60 PH 3 |
| SER.F. | 1.25 CODE M DES B CL B |
| NEMA-NOM-EFF | 75.5 PF 64 |
| RATING | 40C AMB-CONT |
| CC | USABLE AT 208V N/A |
| DE | 6203 ODE 6203 |
| ENCL | TEFC SN |
| | SFA 3.6-3.4/1.7 |

AC Induction Motor Performance Data

Record # 85439

Preliminary Data Sheet

| Winding: 34WGR707-R001 | | Type: 3420M | | Enclosure: TEFC | | |
|------------------------|-----------------|---------------------------|--|-----------------|--|--|
| Nameplate Data | | | 460 V, 60 Hz: High Voltage Connection | | | |
| Rated Output (HP) | 0.75 | Full Load Torque | 2.27 LB-FT | | | |
| Volts | 208-230/460 | Start Configuration | direct on line | | | |
| Full Load Amps | 3.2-3.0/1.5 | Breakdown Torque | 9.93 LB-FT | | | |
| R.P.M. | 1725 | Pull-up Torque | 7.06 LB-FT | | | |
| Hz | 60 Phase | 3 | Locked-rotor Torque | 9.17 LB-FT | | |
| NEMA Design Code | B KVA Code | M | Starting Current | 9.78 A | | |
| Service Factor (S.F.) | 1.25 | No-load Current | 1.08 A | | | |
| NEMA Nom. Eff. | 77 Power Factor | 61 | Line-line Res. @ 25°C | 21.8 Ω | | |
| Rating - Duty | 40C-AMB CONT | Temp. Rise @ Rated Load | 69°C | | | |
| S.F. Amps | 3.6-3.4/1.7 | Temp. Rise @ S.F. Load | 105°C | | | |
| | | Locked-rotor Power Factor | 76.9 | | | |
| | | Rotor inertia | 0.0476 lb-ft ² | | | |

Load Characteristics 460 V, 60 Hz, 0.75 HP

| % of Rated Load | 25 | 50 | 75 | 100 | 125 | 150 | S.F. |
|-----------------|------|------|------|------|------|------|------|
| Power Factor | 29 | 44 | 57 | 66 | 73 | 79 | 73 |
| Efficiency | 57.5 | 70.7 | 75.3 | 76.7 | 76.5 | 75.2 | 76.5 |
| Speed | 1780 | 1763 | 1745 | 1726 | 1723 | 1700 | 1723 |
| Line amperes | 1.09 | 1.15 | 1.26 | 1.4 | 1.58 | 1.79 | 1.58 |

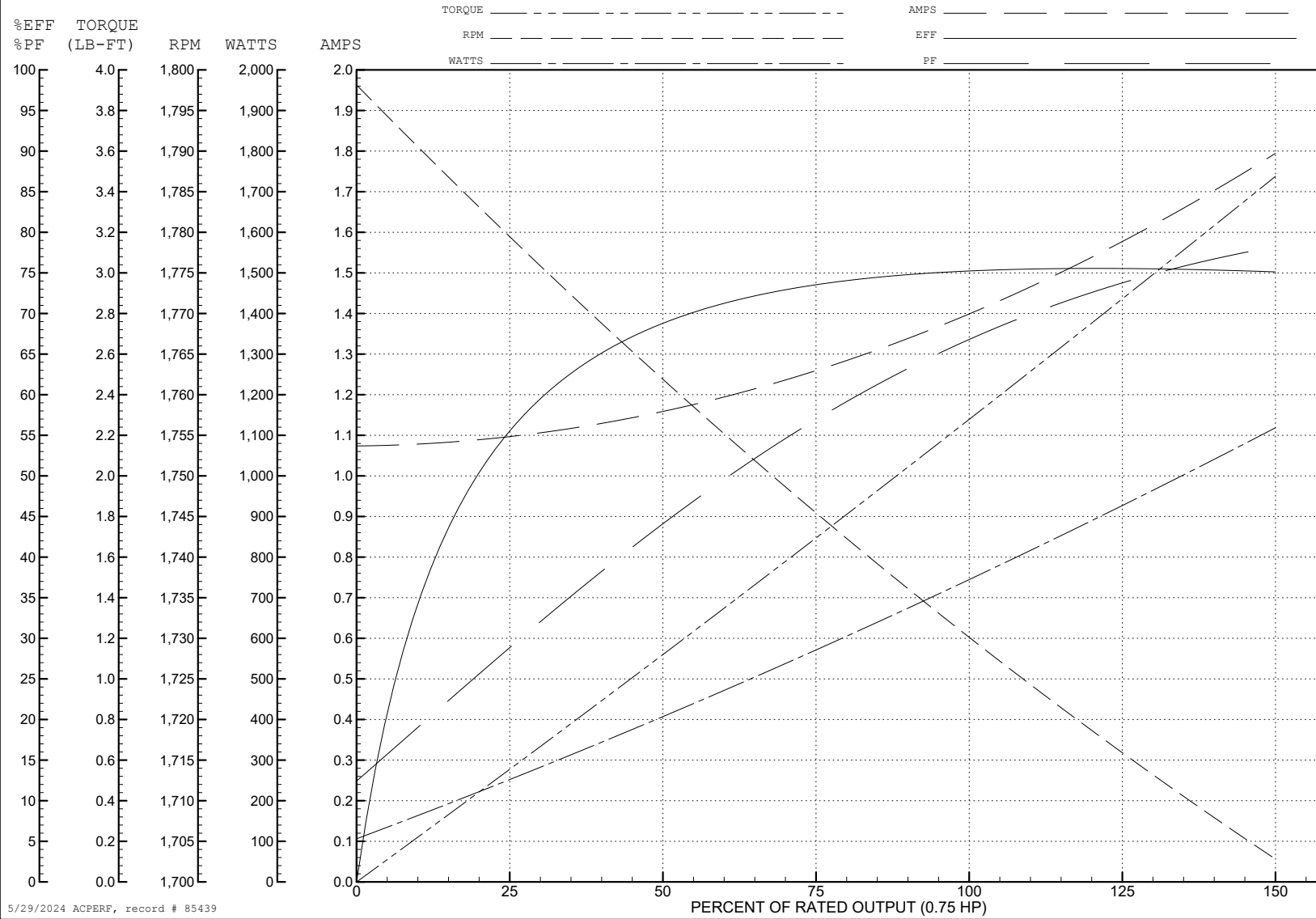
ABB Motors and Mechanical Inc.

WINDING # 34WGR707

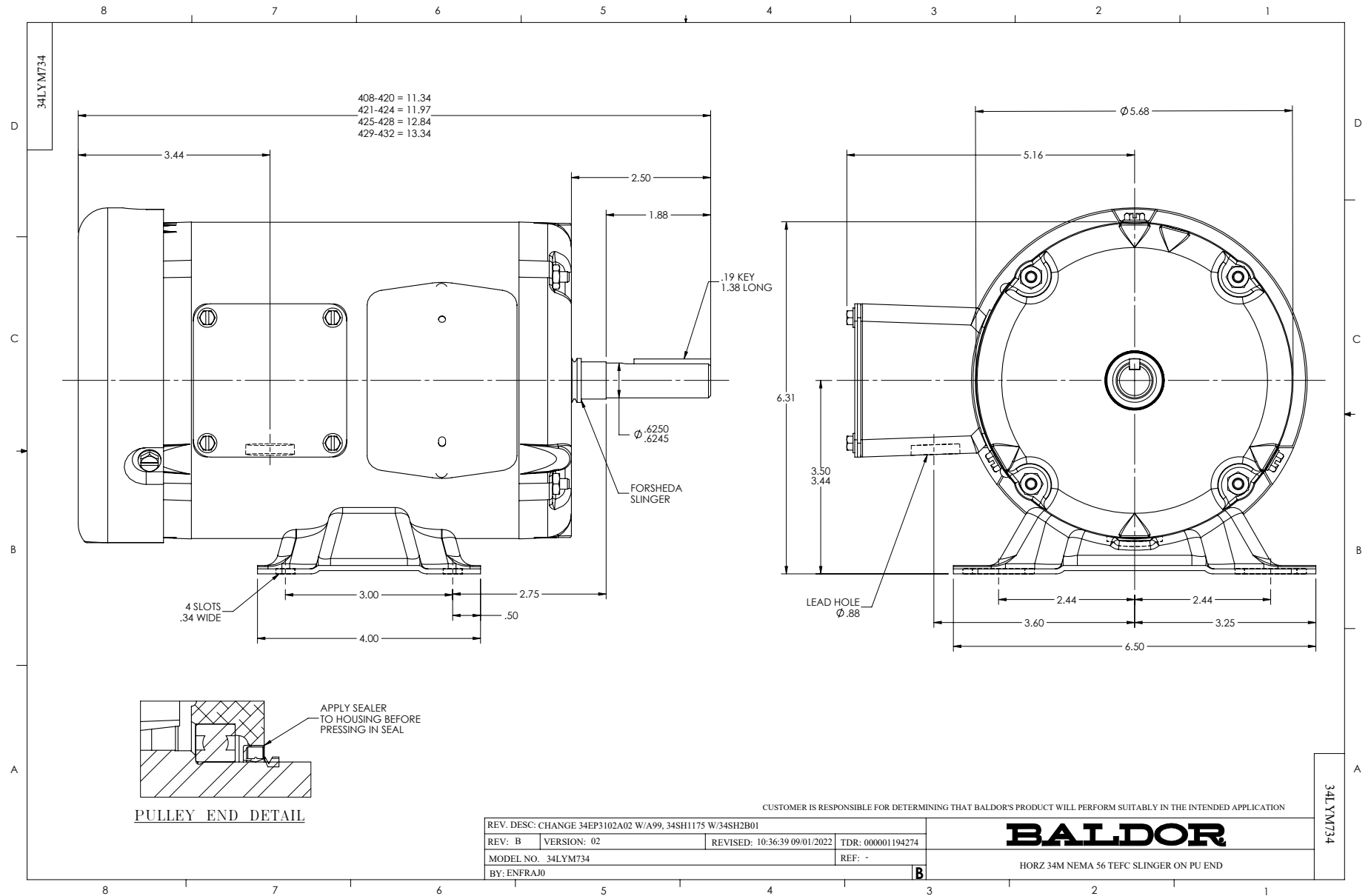
Typical performance - not guaranteed values.

0.75 HP 3 PH 60 HZ 1725 RPM 460 V 3420M

TORQUES (LB-FT): PO=9.93 PU=7.06 LR=9.17 LRA=9.78



5/29/2024 ACPERF, record # 85439



CD0005



LOW VOLTAGE
(2Y)



LINE

HIGH VOLTAGE
(1Y)



LINE

NOTES:

1. INTERCHANGE ANY TWO LINE LEADS TO REVERSE ROTATION.
2. OPTIONAL THERMOSTATS ARE PROVIDED WHEN SPECIFIED.
3. ACTUAL NUMBER OF INTERNAL PARALLEL CIRCUITS MAY BE A MULTIPLE OF THOSE SHOWN ABOVE.
4. LEAD COLORS ARE OPTIONAL. LEADS MUST ALWAYS BE NUMBERED AS SHOWN.

CD0005

| | | | |
|---|---------|-------------------------|--------------|
| REV. DESC: REVISE TO SHOW OPTIONAL COLORS | | | |
| REV. LTR: E | BY: JLP | REVISED: 01/19/99 10:15 | TDR: 0171435 |
| S00000 | | FILE: AAA00005140 | MDL: - |
| | | MTL: - | |

BALDOR ELECTRIC Co.

3PH, DV, 9 LEADS