

BALDOR • RELIANCE

Customer information packet

FDL3732M

7.5HP, 1730RPM, 1PH, 60HZ, 213, 3740LC, TEFC, F

Class - None

Division - Not Applicable

Specifications

Enclosure	TEFC
Frame	213
Frame Material	Steel
Frequency	60.00 Hz
Motor Letter Type	Cap Start, Cap Run
Output @ Frequency	7.500 HP @ 60 HZ
Phase	1
Synchronous Speed @ Frequency	1800 RPM @ 60 HZ
Voltage @ Frequency	230.0 V @ 60 HZ
XP Class and Group	None
XP Division	Not Applicable
Agency Approvals	UR CSA
Ambient Temperature	40 °C
Auxillary Box	No Auxillary Box
Auxillary Box Lead Termination	None
Base Indicator	Rigid
Bearing Grease Type	Polyrex EM (-20F +300F)
Blower	None
Current @ Voltage	30.000 A @ 230.0 V
Design Code	L
Drip Cover	No Drip Cover
Duty Rating	CONT
Efficiency @ 100% Load	84.0 %
Electrically Isolated Bearing	Not Electrically Isolated
Feedback Device	NO FEEDBACK
Front Face Code	Standard
Front Shaft Indicator	None
Heater Indicator	No Heater
High Voltage Full Load Amps	30.0 a
Insulation Class	F
Inverter Code	Not Inverter

Part detail

Revision	L
Type	AC
Mech. spec.	37N373
Base	
Status	PRD/A
Elec. spec.	37WGT879
Layout	37LYN373
Eff. date	10-30-2023
CD Diagram	CD0152
Poles	04
Leads	2#10 A PH,3#14 B&J
Proprietary	False
Created date	12-11-2013

KVA Code	H
Lifting Lugs	Standard Lifting Lugs
Locked Bearing Indicator	Locked Bearing
Motor Lead Exit	Cap Box
Motor Lead Quantity/Wire Size	2 @ 10 AWG, A PH
Motor Lead Termination	Flying Leads
Motor Standards	NEMA
Motor Type	3740LC
Mounting Arrangement	F1
Number of Poles	4
Overall Length	18.65 IN
Power Factor	97
Product Family	General Purpose
Pulley End Bearing Type	Sealed Bearing
Pulley Face Code	Standard
Pulley Shaft Indicator	Standard
Rodent Screen	None
Service Factor	1.00
Shaft Diameter	1.125 IN
Shaft Extension Location	Pulley End
Shaft Ground Indicator	No Shaft Grounding
Shaft Rotation	Reversible
Shaft Slinger Indicator	Shaft Slinger
Speed	1730 rpm
Speed Code	Single Speed
Starting Method	Direct on line
Thermal Device - Bearing	None
Thermal Device - Winding	Do Not Use
Vibration Sensor Indicator	No Vibration Sensor
Winding Thermal 1	Manual Thermal Overload
Winding Thermal 1 Location	KO
Winding Thermal 2	None

Nameplate

NP1280L									
CAT.NO.	FDL3732M								
SPEC.	37N373T879G1								
HP	7.5								
VOLTS	230								
AMP	30								
RPM	1730								
FRAME	213	HZ	60	PH	1				
SER.F.	1.00	CODE	H	DES	L	CL	F		
NEMA-NOM-EFF	84	PF	97						
RATING	40C AMB-CONT								
CC								USABLE AT 208V	N/A
DE	6307	ODE	6206						
ENCL	TEFC	SN							

Accessories

Part number	Description	Multiplier
37-3301FD	C FACE KIT FARM DUTY 213-5TC, ENCL, 6307	A8

AC Induction Motor Performance Data

Record # 18791

Typical performance - not guaranteed values

Winding: 37WGT879-R001		Type: 3740LC		Enclosure: TEFC	
Nameplate Data			230 V, 60 Hz: Single Voltage Motor		
Rated Output (HP)	7.5	Full Load Torque	22.6 LB-FT		
Volts	230	Start Configuration	direct on line		
Full Load Amps	30	Breakdown Torque	81.3 LB-FT		
R.P.M.	1730	Pull-up Torque	60 LB-FT		
Hz	60 Phase	1	Locked-rotor Torque	88.4 LB-FT	
NEMA Design Code	L	KVA Code	H	Starting Current	222.4 A
Service Factor (S.F.)			1	No-load Current	8.67 A
NEMA Nom. Eff.	84	Power Factor	97	Line-line Res. @ 25°C	0.199 Ω A Ph 0.516 Ω B Ph
Rating - Duty		40C AMB-CONT		Temp. Rise @ Rated Load	87°C

Load Characteristics 230 V, 60 Hz, 7.5 HP

% of Rated Load	25	50	75	100	125	150
Power Factor	79	90	94	96	96	96
Efficiency	68	81.1	84.7	85.2	83.8	80.6
Speed	1782	1767	1750	1731	1708	1680
Line amperes	11.3	16.5	22.6	29.6	37.5	46.9

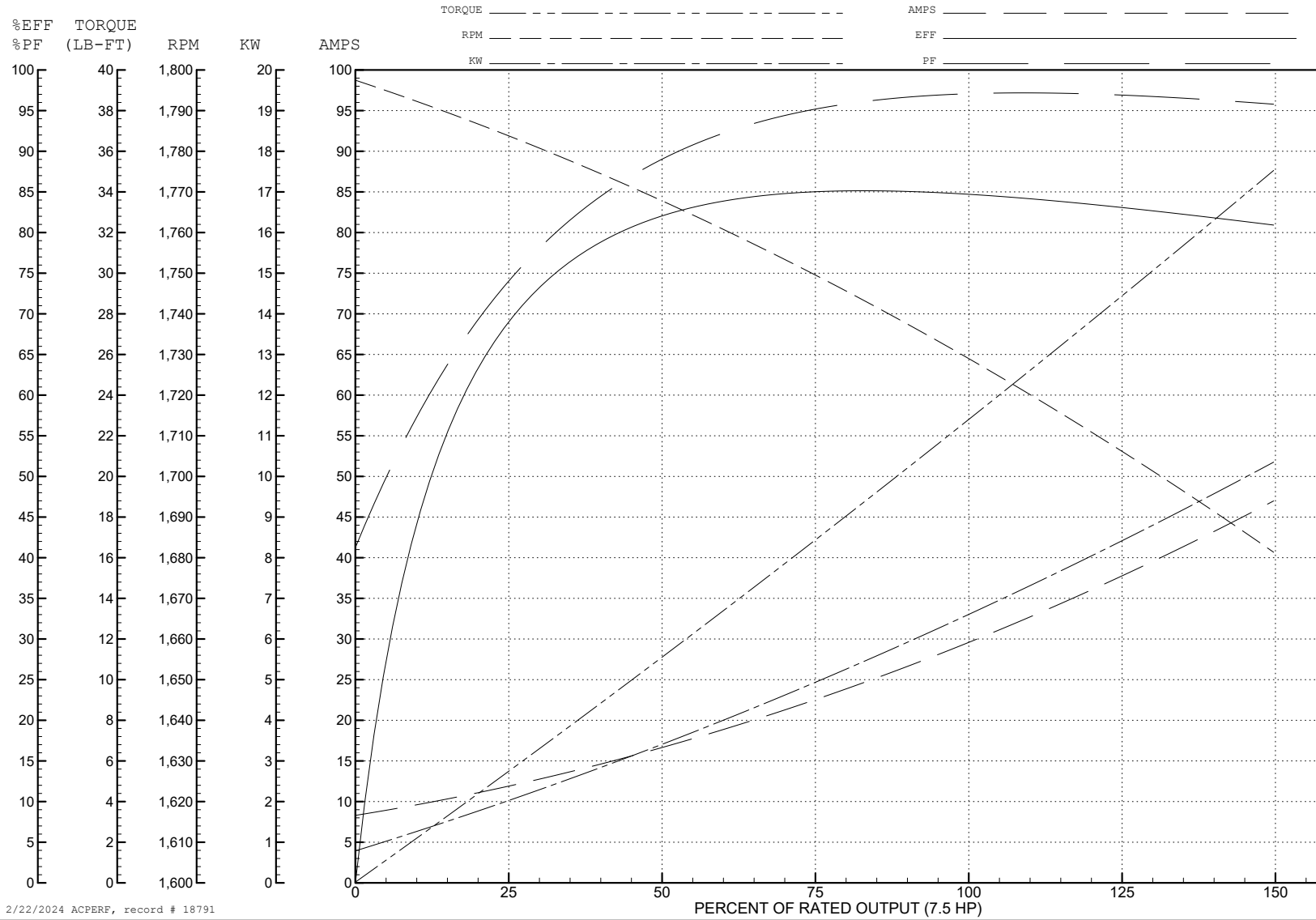
ABB Motors and Mechanical Inc.

WINDING # 37WGT879

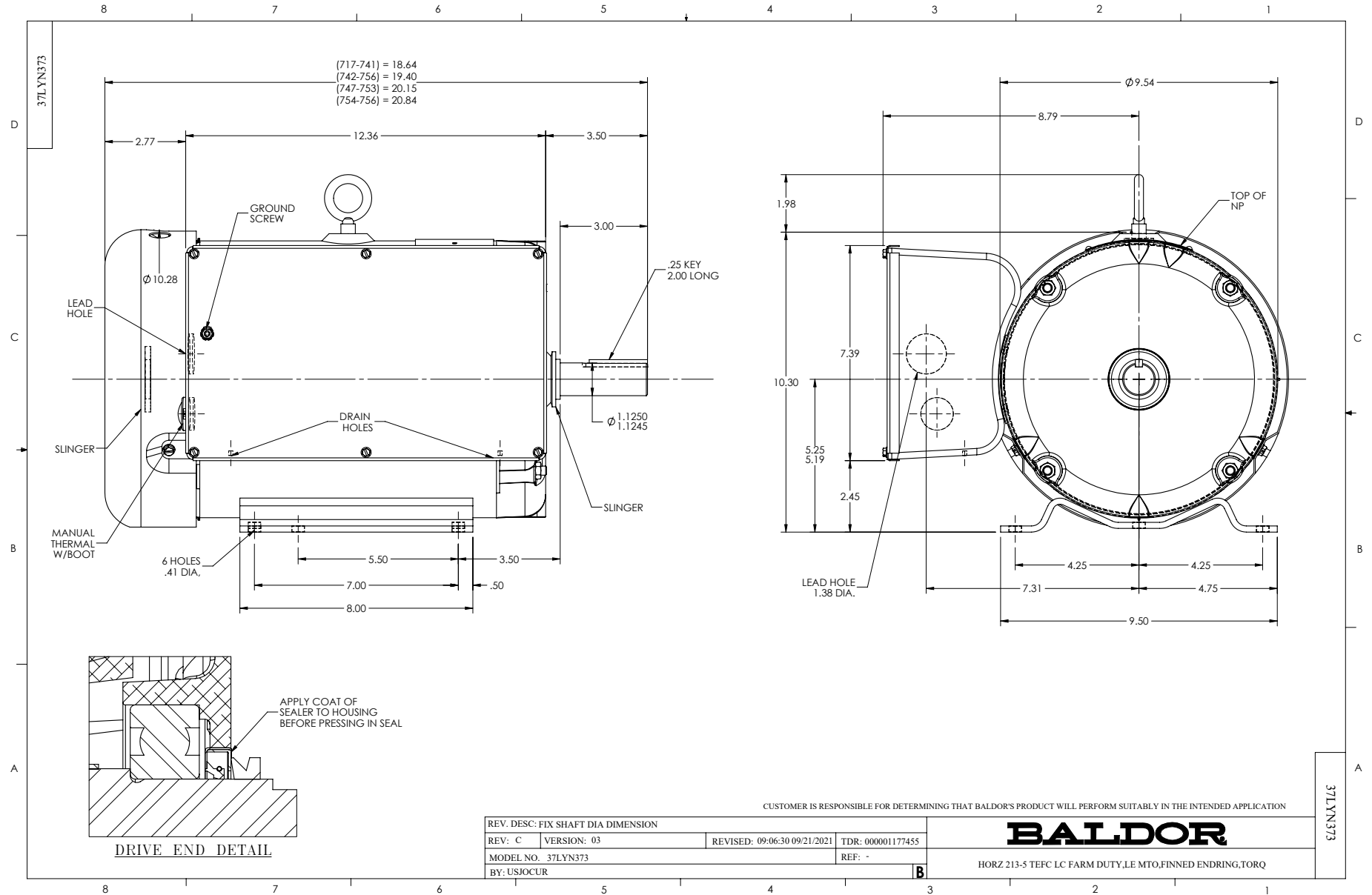
7.5 HP 1 PH 60 HZ 1730 RPM 230 V 3740LC

Typical performance - not guaranteed values.

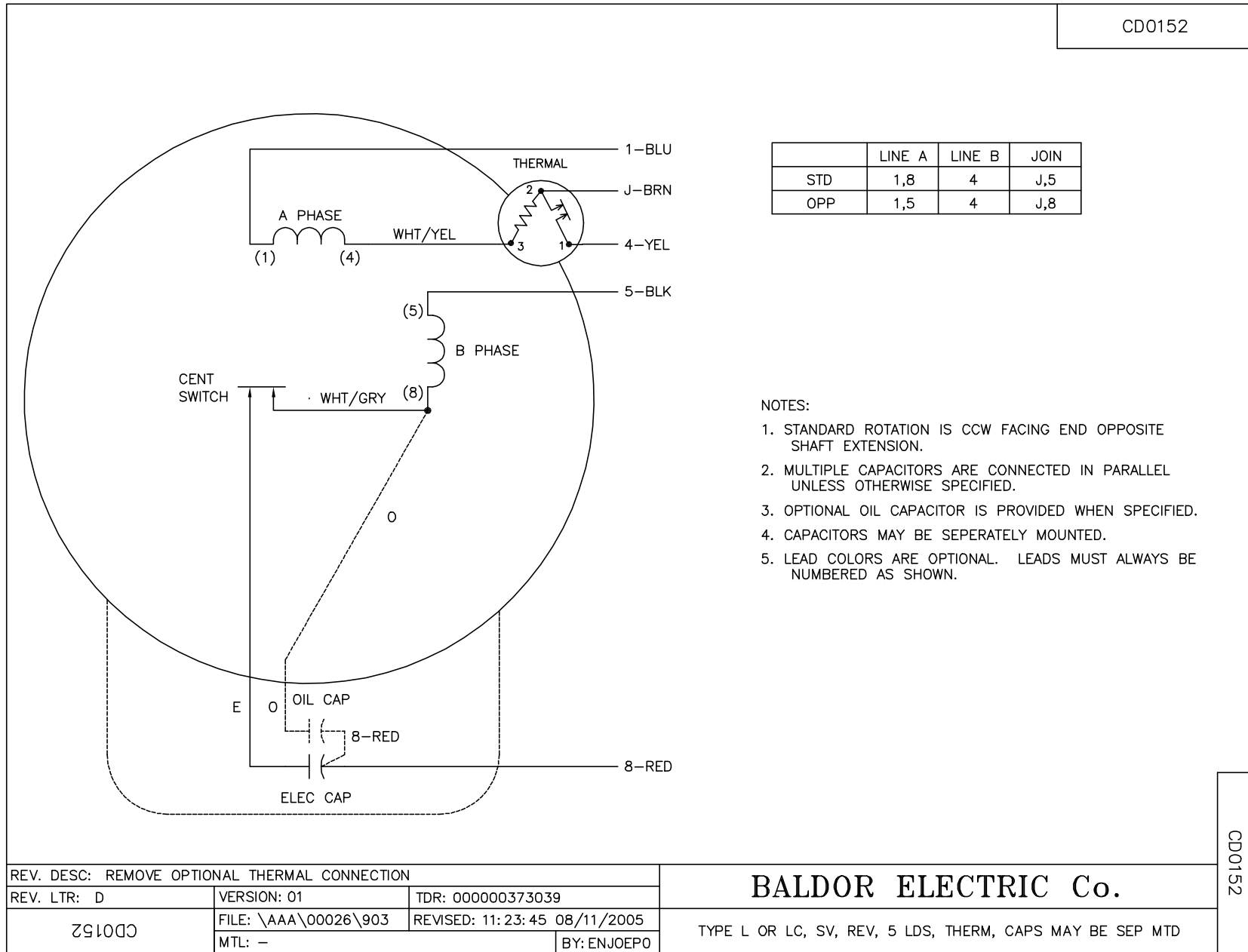
TORQUES (LB-FT): PO=81.3 PU=60 LR=88.4 LRA=222.4



2/22/2024 ACPERF, record # 18791



CD0152



REV. DESC: REMOVE OPTIONAL THERMAL CONNECTION		
REV. LTR: D	VERSION: 01	TDR: 000000373039
ZG100	FILE: \AAA\00026\903	REVISED: 11: 23: 45 08/11/2005
	MTL: -	BY: ENJOEPO

BALDOR ELECTRIC Co.

TYPE L OR LC, SV, REV, 5 LDS, THERM, CAPS MAY BE SEP MTD

CD0152