



---

# Customer information packet

## FDL3619TM

3HP, 1725RPM, 1PH, 60HZ, 184T, 3634LC, TEFC, F1

Class - None

Division - Not Applicable

## Specifications

Enclosure	TEFC
Frame	184T
Frame Material	Steel
Frequency	60.00 Hz
Motor Letter Type	Cap Start, Cap Run
Output @ Frequency	3.000 HP @ 60 HZ
Phase	1
Synchronous Speed @ Frequency	1800 RPM @ 60 HZ
Voltage @ Frequency	230.0 V @ 60 HZ
XP Class and Group	None
XP Division	Not Applicable
Agency Approvals	UR CSA
Ambient Temperature	40 °C
Auxillary Box	No Auxillary Box
Auxillary Box Lead Termination	None
Base Indicator	Rigid
Bearing Grease Type	Polyrex EM (-20F +300F)
Blower	None
Current @ Voltage	13.200 A @ 230.0 V
Design Code	L
Drip Cover	No Drip Cover
Duty Rating	CONT
Efficiency @ 100% Load	81.5 %
Electrically Isolated Bearing	Not Electrically Isolated
Feedback Device	NO FEEDBACK
Front Face Code	Standard
Front Shaft Indicator	None
Heater Indicator	No Heater
High Voltage Full Load Amps	13.2 a
Insulation Class	F
Inverter Code	Not Inverter

## Part detail

Revision	K
Type	AC
Mech. spec.	36Q165
Base	
Status	PRD/A
Elec. spec.	36WGW835
Layout	36LYQ165
Eff. date	05-23-2023
CD Diagram	CD0002A02
Poles	04
Leads	2#14 A PH,3#16 B&J
Proprietary	False
Created date	12-12-2013

<b>KVA Code</b>	H
<b>Lifting Lugs</b>	No Lifting Lugs
<b>Locked Bearing Indicator</b>	No Locked Bearing
<b>Motor Lead Exit</b>	Ko Box
<b>Motor Lead Quantity/Wire Size</b>	2 @ 14 AWG, A PH
<b>Motor Lead Termination</b>	Flying Leads
<b>Motor Standards</b>	NEMA
<b>Motor Type</b>	3634LC
<b>Mounting Arrangement</b>	F1
<b>Number of Poles</b>	4
<b>Overall Length</b>	16.54 IN
<b>Power Factor</b>	90
<b>Product Family</b>	General Purpose
<b>Pulley End Bearing Type</b>	Sealed Bearing
<b>Pulley Face Code</b>	Standard
<b>Pulley Shaft Indicator</b>	Standard
<b>Rodent Screen</b>	None
<b>Service Factor</b>	1.00
<b>Shaft Diameter</b>	1.125 IN
<b>Shaft Extension Location</b>	Pulley End
<b>Shaft Ground Indicator</b>	No Shaft Grounding
<b>Shaft Rotation</b>	Reversible
<b>Shaft Slinger Indicator</b>	Shaft Slinger
<b>Speed</b>	1725 rpm
<b>Speed Code</b>	Single Speed
<b>Starting Method</b>	Direct on line
<b>Thermal Device - Bearing</b>	None
<b>Thermal Device - Winding</b>	None
<b>Vibration Sensor Indicator</b>	No Vibration Sensor
<b>Winding Thermal 1</b>	Manual Thermal Overload
<b>Winding Thermal 1 Location</b>	KO
<b>Winding Thermal 2</b>	None

**Nameplate**

<b>NP1280L</b>							
<b>CAT.NO.</b>	FDL3619TM						
<b>SPEC.</b>	36Q165W835G1						
<b>HP</b>	3						
<b>VOLTS</b>	230						
<b>AMP</b>	13.2						
<b>RPM</b>	1725						
<b>FRAME</b>	184T	<b>HZ</b>	60	<b>PH</b>	1		
<b>SER.F.</b>	1.00	<b>CODE</b>	H	<b>DES</b>	L	<b>CL</b>	F
<b>NEMA-NOM-EFF</b>	81.5	<b>PF</b>	90				
<b>RATING</b>	40C AMB-CONT						
<b>CC</b>						<b>USABLE AT 208V</b>	N/A
<b>DE</b>	6206	<b>ODE</b>	6205				
<b>ENCL</b>	TEFC	<b>SN</b>					

**Accessories**

<b>Part number</b>	<b>Description</b>	<b>Multiplier</b>
36-3301FDA	C FACE KIT FARM DUTY F182-4TC, ENCL,	P1
36EP1304A62SP	FLANGE MTD ENDPLATE 182-4TD -ENCL (LESS	A8

**AC Induction Motor Performance Data**

Record # 10851

Typical performance - not guaranteed values

<b>Winding: 36WGW835-R001</b>		<b>Type: 3634LC</b>		<b>Enclosure: TEFC</b>	
<b>Nameplate Data</b>			<b>230 V, 60 Hz: Single Voltage Motor</b>		
<b>Rated Output (HP)</b>	3	<b>Full Load Torque</b>	9 LB-FT		
<b>Volts</b>	230	<b>Start Configuration</b>	direct on line		
<b>Full Load Amps</b>	13.2	<b>Breakdown Torque</b>	22 LB-FT		
<b>R.P.M.</b>	1725	<b>Pull-up Torque</b>	21.7 LB-FT		
<b>Hz</b>	60	<b>Locked-rotor Torque</b>	26 LB-FT		
<b>NEMA Design Code</b>	L	<b>Starting Current</b>	100 A		
<b>Service Factor (S.F.)</b>	1	<b>No-load Current</b>	6.2 A		
<b>NEMA Nom. Eff.</b>	81.5	<b>Line-line Res. @ 25°C</b>	0.698 Ω A Ph 1.342 Ω B Ph		
<b>Rating - Duty</b>	40C AMB-CONT	<b>Temp. Rise @ Rated Load</b>	84°C		

**Load Characteristics 230 V, 60 Hz, 3 HP**

<b>% of Rated Load</b>	<b>25</b>	<b>50</b>	<b>75</b>	<b>100</b>	<b>125</b>	<b>150</b>
<b>Power Factor</b>	66	82	84	89	90	92
<b>Efficiency</b>	61.5	75	76.2	79.7	80.3	77.4
<b>Speed</b>	1790	1783	1774	1764	1754	1739
<b>Line amperes</b>	7.8	8.1	11.6	13.9	16.8	20.5

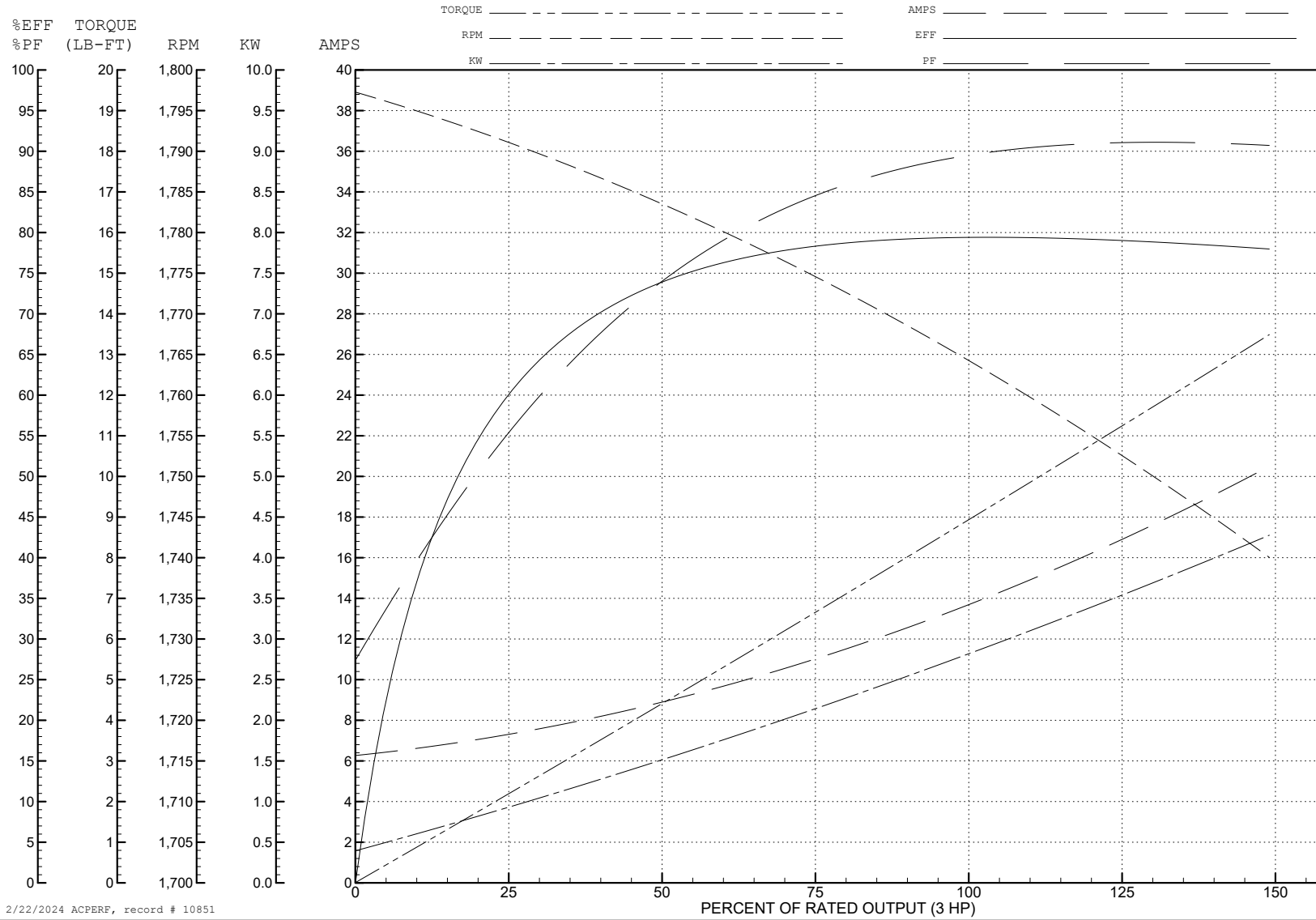
ABB Motors and Mechanical Inc.

WINDING # 36WGW835

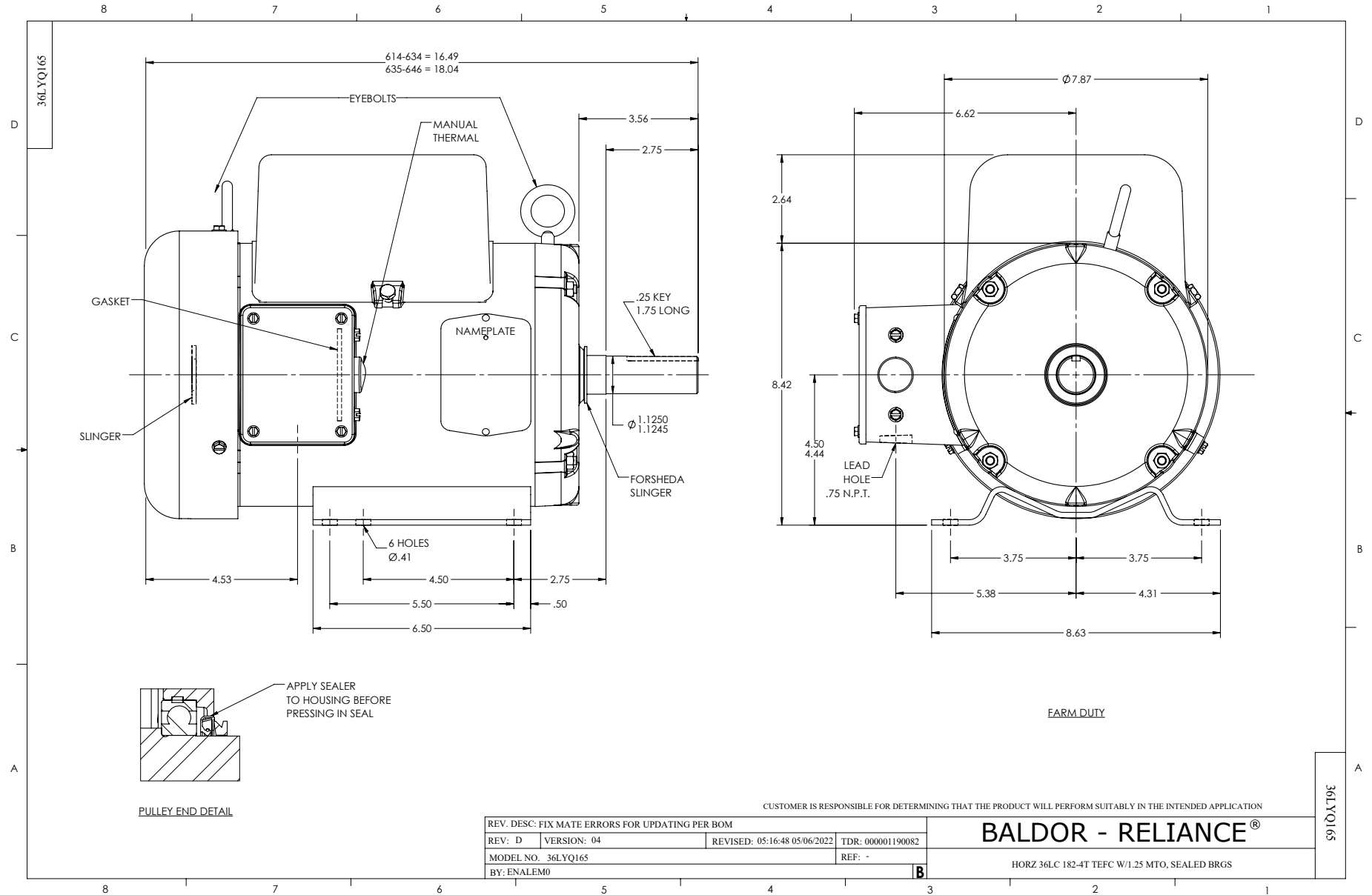
Typical performance - not guaranteed values.

3 HP 1 PH 60 HZ 1725 RPM 230 V 3634LC

TORQUES (LB-FT): PO=22 PU=21.7 LR=26 LRA=100



2/22/2024 ACPERF, record # 10851



CUSTOMER IS RESPONSIBLE FOR DETERMINING THAT THE PRODUCT WILL PERFORM SUITABLY IN THE INTENDED APPLICATION

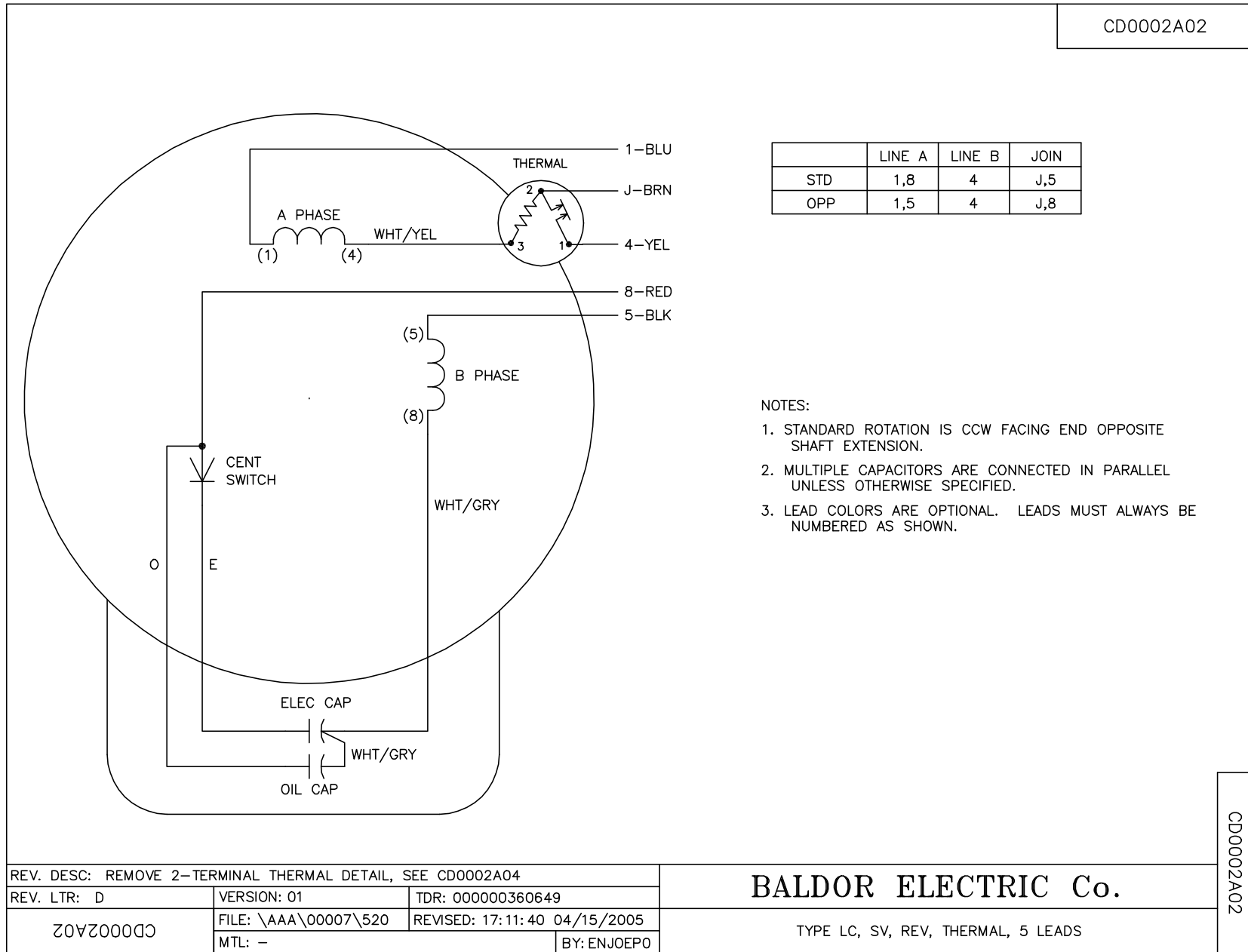
REV. DESC: FIX MATE ERRORS FOR UPDATING PER BOM			
REV: D	VERSION: 04	REVISED: 05:16:48 05/06/2022	TDR: 000001190082
MODEL NO. 36LYQ165		REF: -	
BY: ENALEM0			

**BALDOR - RELIANCE®**

HORZ 36LC 182-4T TEFC W/1.25 MTO, SEALED BRGS



CD0002A02



	LINE A	LINE B	JOIN
STD	1,8	4	J,5
OPP	1,5	4	J,8

NOTES:

1. STANDARD ROTATION IS CCW FACING END OPPOSITE SHAFT EXTENSION.
2. MULTIPLE CAPACITORS ARE CONNECTED IN PARALLEL UNLESS OTHERWISE SPECIFIED.
3. LEAD COLORS ARE OPTIONAL. LEADS MUST ALWAYS BE NUMBERED AS SHOWN.

REV. DESC: REMOVE 2-TERMINAL THERMAL DETAIL, SEE CD0002A04		
REV. LTR: D	VERSION: 01	TDR: 000000360649
CD0002A02	FILE: \AAA\00007\520	REVISED: 17:11:40 04/15/2005
	MTL: -	BY: ENJOEPO

**BALDOR ELECTRIC Co.**

TYPE LC, SV, REV, THERMAL, 5 LEADS

CD0002A02