

**BALDOR • RELIANCE**

---

# Customer information packet

## FDL3611TM

2HP, 1725RPM, 1PH, 60HZ, 182T, 3634L, TEFC, F1

Class - None

Division - Not Applicable

## Specifications

Enclosure	TEFC
Frame	182T
Frame Material	Steel
Frequency	60.00 Hz
Haz Area Class and Group	None
Haz Area Division	Not Applicable
Motor Letter Type	Cap Start, Induction Run
Output @ Frequency	2.000 HP @ 60 HZ
Phase	1
Synchronous Speed @ Frequency	1800 RPM @ 60 HZ
Voltage @ Frequency	115.0 V @ 60 HZ 230.0 V @ 60 HZ
Agency Approvals	UR CSA
Ambient Temperature	40 °C
Auxillary Box	No Auxillary Box
Auxillary Box Lead Termination	None
Base Indicator	Rigid
Bearing Grease Type	Polyrex EM (-20F +300F)
Blower	None
Current @ Voltage	14.000 A @ 230.0 V 28.000 A @ 115.0 V
Design Code	L
Drip Cover	No Drip Cover
Duty Rating	CONT
Efficiency @ 100% Load	75.0 %
Electrically Isolated Bearing	Not Electrically Isolated
Feedback Device	NO FEEDBACK
Front Face Code	Standard
Front Shaft Indicator	None
Heater Indicator	No Heater
High Voltage Full Load Amps	14.0 a

## Part detail

Revision	M
Type	AC
Mech. spec.	36Q168
Base	
Status	PRD/A
Elec. spec.	36WG3444
Layout	36LYQ168
Eff. date	07-25-2024
CD Diagram	CD0008
Poles	04
Leads	4#14 A&J,2#16 B PH,1#10 #4TH
Proprietary	False
Created date	12-12-2013

Insulation Class	F
Inverter Code	Not Inverter
KVA Code	J
Lifting Lugs	No Lifting Lugs
Locked Bearing Indicator	No Locked Bearing
Motor Lead Exit	Ko Box
Motor Lead Quantity/Wire Size	4 @ 14 AWG, A&J
Motor Lead Termination	Flying Leads
Motor Standards	NEMA
Motor Type	3634L
Mounting Arrangement	F1
Number of Poles	4
Overall Length	16.55 IN
Power Factor	67
Product Family	General Purpose
Pulley End Bearing Type	Sealed Bearing
Pulley Face Code	Standard
Pulley Shaft Indicator	Standard
Rodent Screen	None
Service Factor	1.00
Shaft Diameter	1.125 IN
Shaft Extension Location	Pulley End
Shaft Ground Indicator	No Shaft Grounding
Shaft Rotation	Reversible
Shaft Slinger Indicator	Shaft Slinger
Speed	1725 rpm
Speed Code	Single Speed
Starting Method	Direct on line
Thermal Device - Bearing	None
Thermal Device - Winding	None
Vibration Sensor Indicator	No Vibration Sensor
Winding Thermal 1	Manual Thermal Overload
Winding Thermal 1 Location	KO
Winding Thermal 2	None

**Nameplate**

<b>NP1280L</b>									
<b>CAT.NO.</b>	FDL3611TM								
<b>SPEC.</b>	36Q168-3444G1								
<b>HP</b>	2								
<b>VOLTS</b>	115/230								
<b>AMP</b>	28/14								
<b>RPM</b>	1725								
<b>FRAME</b>	182T	<b>HZ</b>	60	<b>PH</b>	1				
<b>SER.F.</b>	1.00	<b>CODE</b>	J	<b>DES</b>	L	<b>CL</b>	F		
<b>NEMA-NOM-EFF</b>	75	<b>PF</b>	67						
<b>RATING</b>	40C AMB-CONT								
<b>CC</b>									
<b>DE</b>	6206	<b>ODE</b>	6205						
<b>ENCL</b>	TEFC	<b>SN</b>							

**Accessories**

<b>Part number</b>	<b>Description</b>	<b>Multiplier</b>
36-3301FD	C FACE KIT FARM DUTY 182-4TC ENCL, 6206	P1
36EP1304A62SP	FLANGE MTD ENDPLATE 182-4TD -ENCL (LESS	A8

**AC Induction Motor Performance Data**

Record # 61428

Typical performance - not guaranteed values

Winding: 36WG3444-R003		Type: 3634L	Enclosure: TEFC		
<b>Nameplate Data</b>			<b>230 V, 60 Hz: High Voltage Connection</b>		
Rated Output (HP)	2	Full Load Torque	6 LB-FT		
Volts	115/230	Start Configuration	direct on line		
Full Load Amps	28/14	Breakdown Torque	23 LB-FT		
R.P.M.	1725	Pull-up Torque	22 LB-FT		
Hz	60 Phase	1	Locked-rotor Torque	27 LB-FT	
NEMA Design Code	L	KVA Code	J	Starting Current	105 A
Service Factor (S.F.)	1	No-load Current	8.5 A		
NEMA Nom. Eff.	75	Power Factor	67	Line-line Res. @ 25°C	0.732 Ω A Ph 0.396 Ω B Ph
Rating - Duty	40C	AMB-CONT	Temp. Rise @ Rated Load	86°C	

**Load Characteristics 230 V, 60 Hz, 2 HP**

% of Rated Load	25	50	75	100	125	150
Power Factor	43	57	68	76	81	84
Efficiency	47	62	68	71	71.5	71
Speed	1786	1776	1765	1754	1740	1725
Line amperes	8.8	9.7	10.8	12.3	14.2	16.4

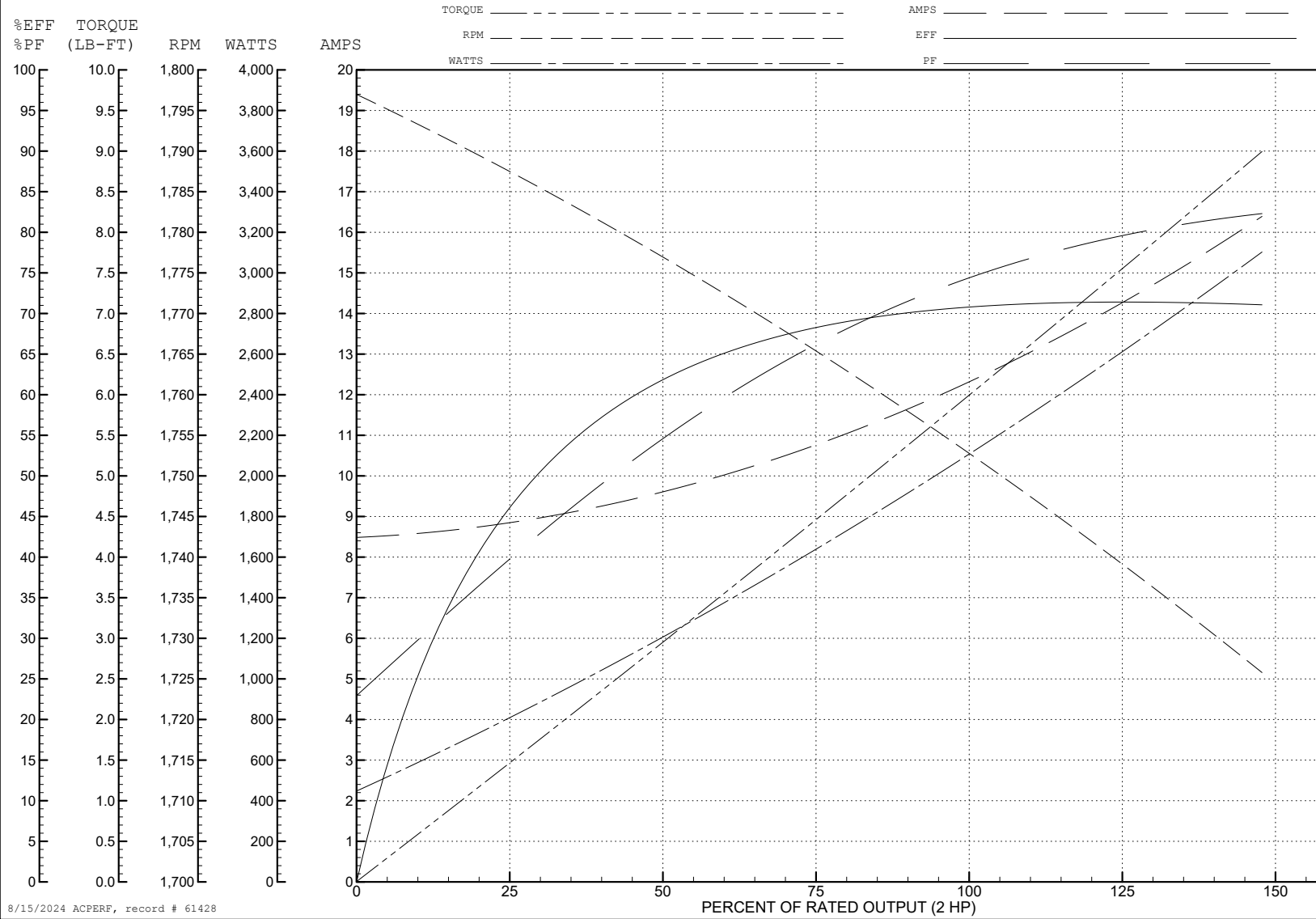
ABB Motors and Mechanical Inc.

WINDING # 36WG3444

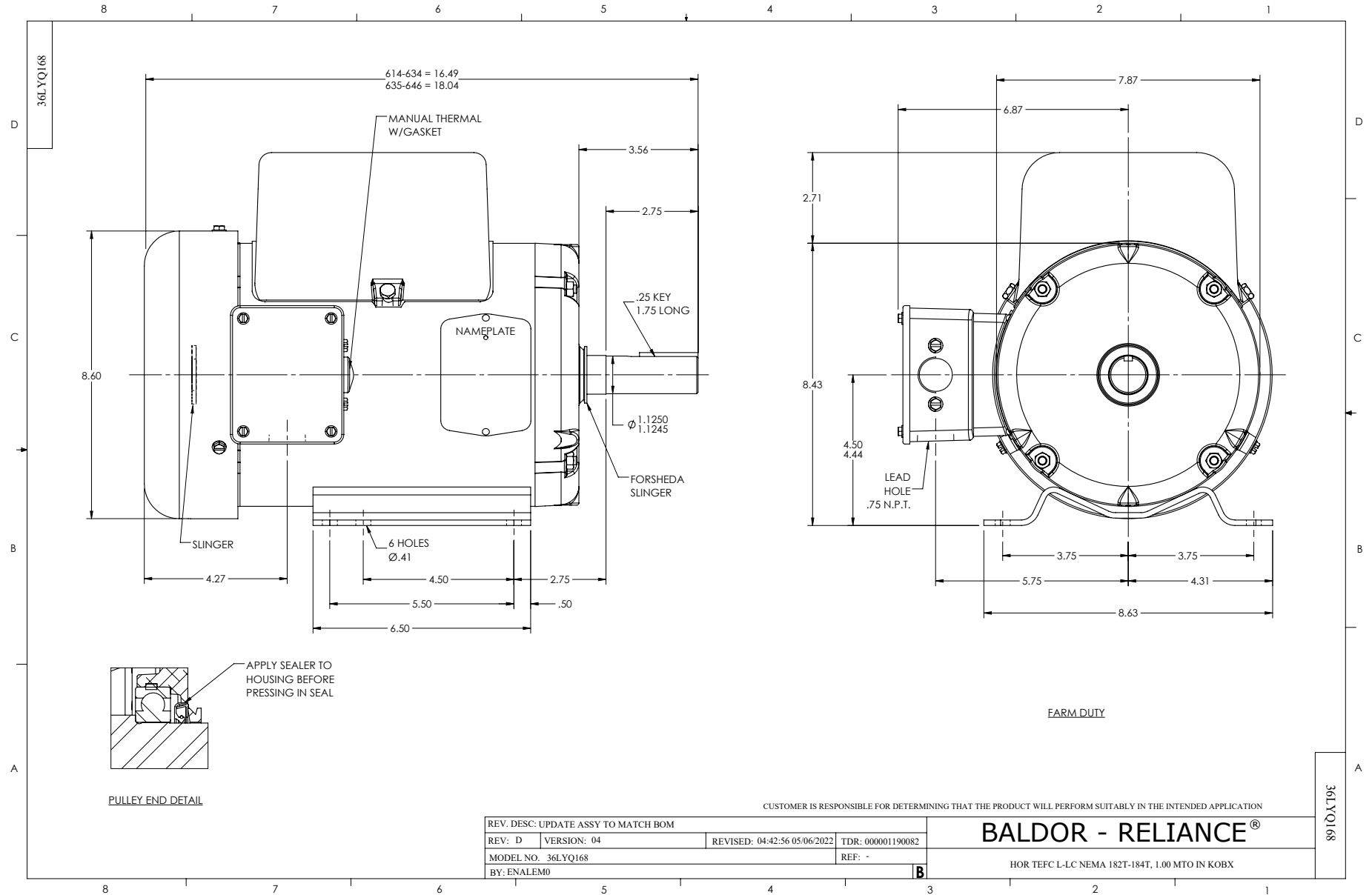
Typical performance - not guaranteed values.

2 HP 1 PH 60 HZ 1725 RPM 230 V 3634L

TORQUES (LB-FT): PO=23 PU=22 LR=27 LRA=105

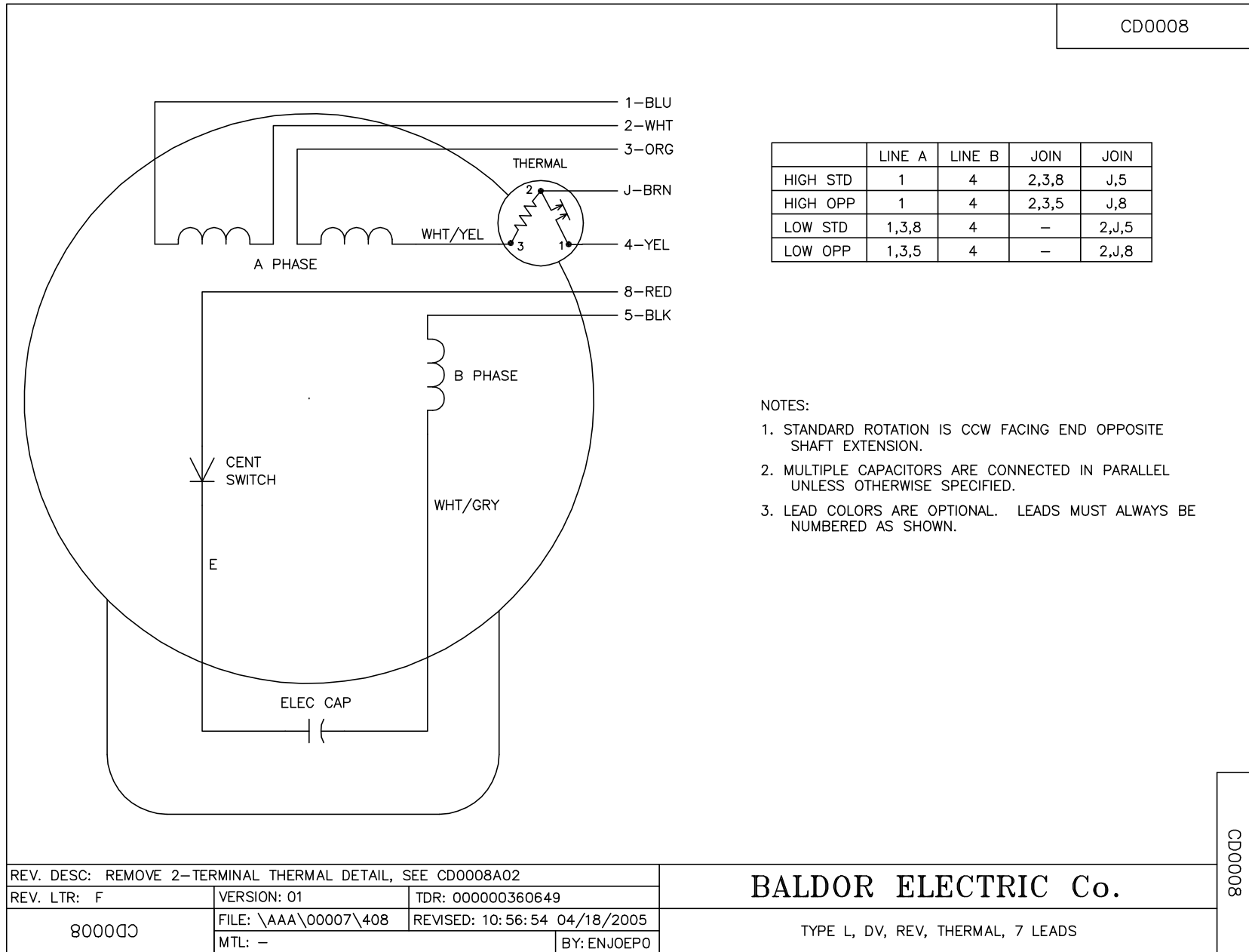


8/15/2024 ACPERF, record # 61428





CD0008



REV. DESC: REMOVE 2-TERMINAL THERMAL DETAIL, SEE CD0008A02		
REV. LTR: F	VERSION: 01	TDR: 000000360649
800000	FILE: \AAA\00007\408	REVISED: 10:56:54 04/18/2005
	MTL: -	BY: ENJOEPO

BALDOR ELECTRIC Co.

TYPE L, DV, REV, THERMAL, 7 LEADS

CD0008