

BALDOR • RELIANCE

Customer information packet

FDL3507M

.75HP, 1725RPM, 1PH, 60HZ, 56, 3432LC, TEFC, F1

Class - None

Division - Not Applicable

Specifications

Enclosure	TEFC
Frame	56
Frame Material	Steel
Frequency	60.00 Hz
Haz Area Class and Group	None
Haz Area Division	Not Applicable
Motor Letter Type	Cap Start, Cap Run
Output @ Frequency	.750 HP @ 60 HZ
Phase	1
Synchronous Speed @ Frequency	1800 RPM @ 60 HZ
Voltage @ Frequency	230.0 V @ 60 HZ 115.0 V @ 60 HZ
Agency Approvals	CSA UR
Ambient Temperature	40 °C
Auxillary Box	No Auxillary Box
Auxillary Box Lead Termination	None
Base Indicator	Rigid
Bearing Grease Type	Polyrex EM (-20F +300F)
Blower	None
Current @ Voltage	8.800 A @ 115.0 V 4.400 A @ 230.0 V
Design Code	N
Drip Cover	No Drip Cover
Duty Rating	CONT
Efficiency @ 100% Load	74.0 %
Electrically Isolated Bearing	Not Electrically Isolated
Feedback Device	NO FEEDBACK
Front Face Code	Standard
Front Shaft Indicator	None
Heater Indicator	No Heater
High Voltage Full Load Amps	4.4 a

Part detail

Revision	L
Type	AC
Mech. spec.	34M367
Base	
Status	PRD/A
Elec. spec.	34WGW937
Layout	34LYM367
Eff. date	07-25-2024
CD Diagram	CD0320
Poles	04
Leads	6#18,1#14 #4TH
Proprietary	False
Created date	12-02-2013

Insulation Class	B
Inverter Code	Not Inverter
KVA Code	M
Lifting Lugs	No Lifting Lugs
Locked Bearing Indicator	No Locked Bearing
Motor Lead Exit	Ko Box
Motor Lead Quantity/Wire Size	6 @ 18 AWG
Motor Lead Termination	Flying Leads
Motor Standards	NEMA
Motor Type	3432LC
Mounting Arrangement	F1
Number of Poles	4
Overall Length	13.35 IN
Power Factor	75
Product Family	General Purpose
Pulley End Bearing Type	Sealed Bearing
Pulley Face Code	Standard
Pulley Shaft Indicator	Standard
Rodent Screen	None
RoHS Status	ROHS COMPLIANT
Service Factor	1.25
Shaft Diameter	0.625 IN
Shaft Extension Location	Pulley End
Shaft Ground Indicator	No Shaft Grounding
Shaft Rotation	Reversible
Shaft Slinger Indicator	Shaft Slinger
Speed	1725 rpm
Speed Code	Single Speed
Starting Method	Direct on line
Thermal Device - Bearing	None
Thermal Device - Winding	None
Vibration Sensor Indicator	No Vibration Sensor
Winding Thermal 1	Manual Thermal Overload
Winding Thermal 1 Location	KO

Winding Thermal 2

None

Nameplate

NP1280L									
CAT.NO.	FDL3507M								
SPEC.	34M367W937								
HP	.75								
VOLTS	115/230								
AMP	8.8/4.4								
RPM	1725								
FRAME	56	HZ	60	PH	1				
SER.F.	1.25	CODE	M	DES	N	CL	B		
NEMA-NOM-EFF	74	PF	75						
RATING	40C AMB-CONT								
CC									
DE	6203	ODE	6203						
ENCL	TEFC	SN							
	SFA 10.2/5.1								

Accessories

Part number	Description	Multiplier
34-3300FD	C FACE KIT FARM DUTY 56C, ENCL 6203 BRG	A8

AC Induction Motor Performance Data

Record # 7151

Typical performance - not guaranteed values

Winding: 34WGW937-R001		Type: 3432LC	Enclosure: TEFC		
Nameplate Data			230 V, 60 Hz: High Voltage Connection		
Rated Output (HP)	.75		Full Load Torque	2.25 LB-FT	
Volts	115/230		Start Configuration	direct on line	
Full Load Amps	8.8/4.4		Breakdown Torque	7 LB-FT	
R.P.M.	1725		Pull-up Torque	6.5 LB-FT	
Hz	60 Phase	1	Locked-rotor Torque	10.2 LB-FT	
NEMA Design Code	N	KVA Code	M	Starting Current	35 A
Service Factor (S.F.)	1.25		No-load Current	3.2 A	
NEMA Nom. Eff.	74	Power Factor	75	Line-line Res. @ 25°C	2.35 Ω A Ph 1.76 Ω B Ph
Rating - Duty	40C AMB-CONT		Temp. Rise @ Rated Load	59°C	
S.F. Amps	10.2/5.1		Temp. Rise @ S.F. Load	74°C	

Load Characteristics 230 V, 60 Hz, 0.75 HP

% of Rated Load	25	50	75	100	125	150	S.F.
Power Factor	38	53	66	74	80	84	0
Efficiency	50.7	66	72.9	74.9	75.1	74.1	0
Speed	1787	1775	1761	1750	1733	1715	0
Line amperes	3.3	3.5	3.9	4.4	5.1	5.9	5.1

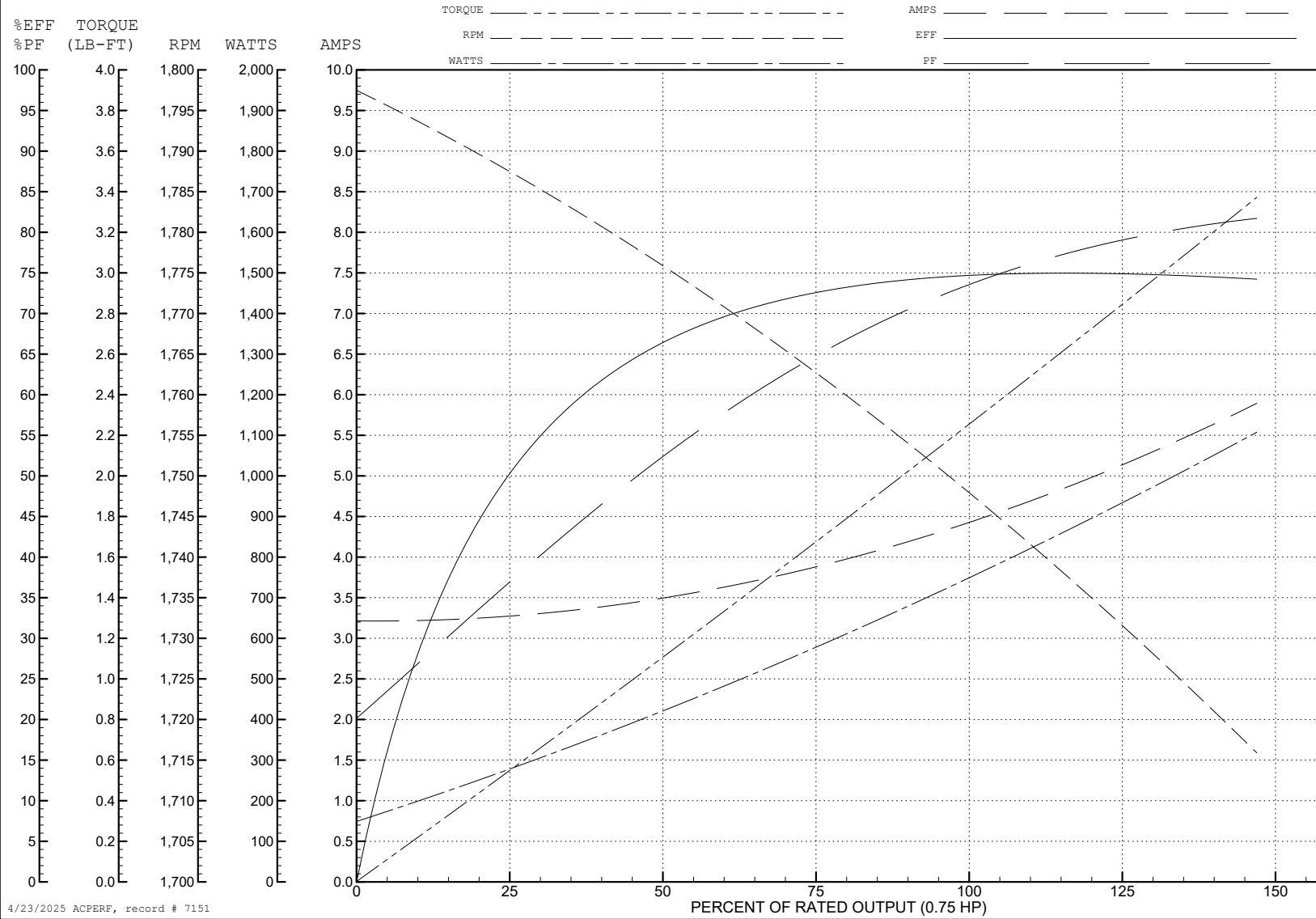
ABB Motors and Mechanical Inc.

WINDING # 34WGW937

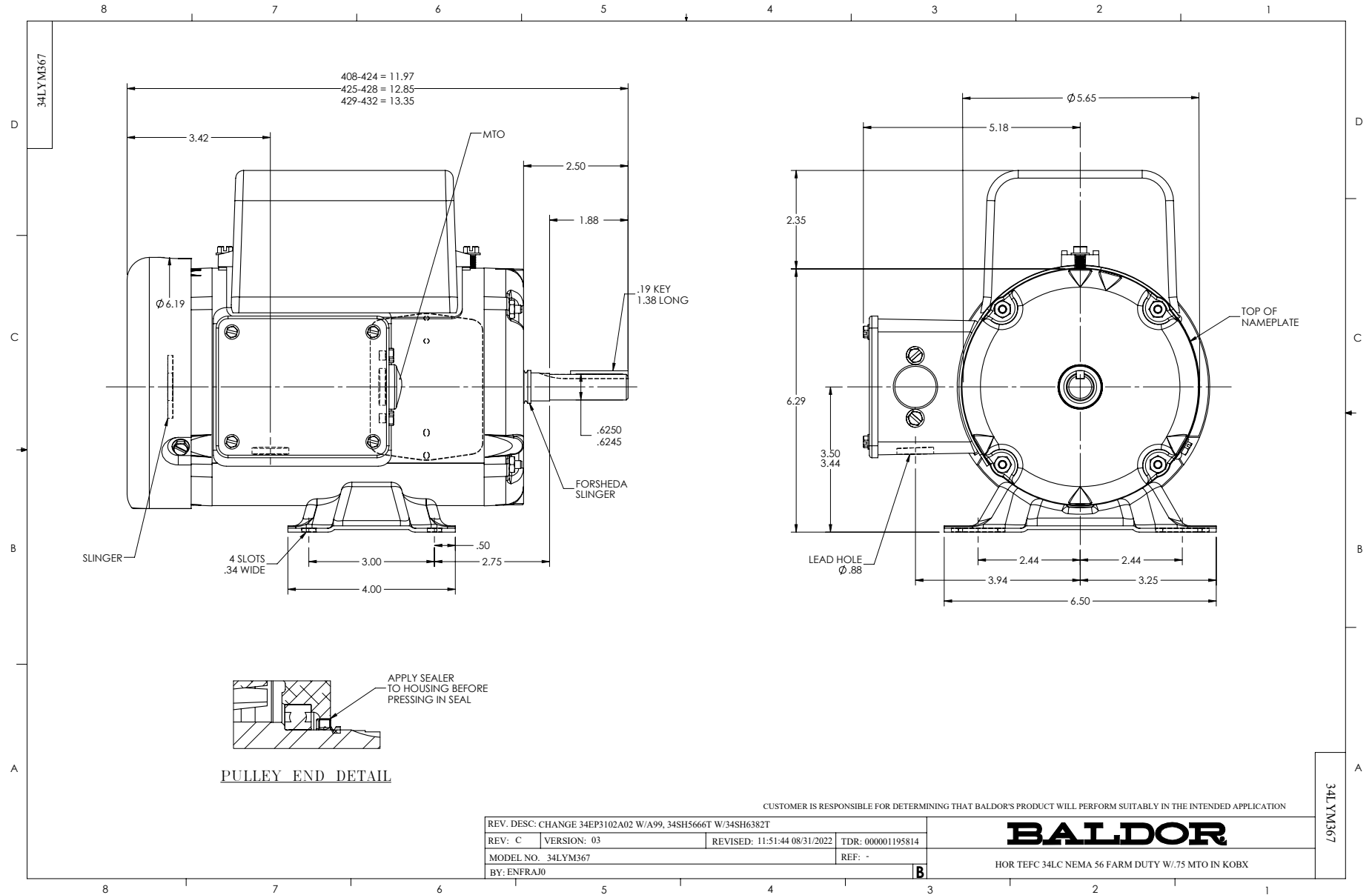
Typical performance - not guaranteed values.

0.75 HP 1 PH 60 HZ 1725 RPM 230 V 3432LC

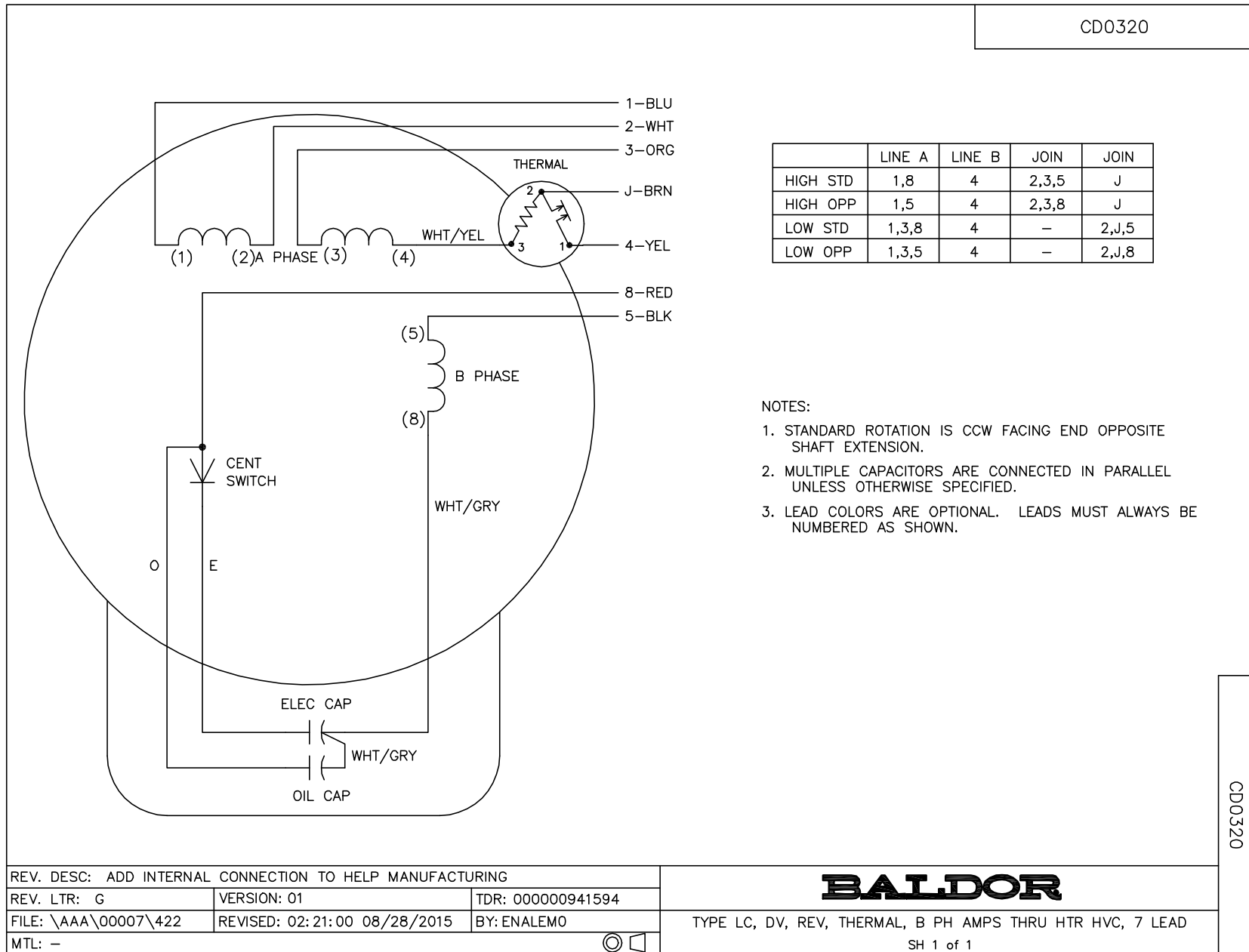
TORQUES (LB-FT): PO=7 PU=6.5 LR=10.2 LRA=35



4/23/2025 ACPERF, record # 7151



CD0320



CD0320

REV. DESC: ADD INTERNAL CONNECTION TO HELP MANUFACTURING		
REV. LTR: G	VERSION: 01	TDR: 00000941594
FILE: \AAA\00007\422	REVISED: 02:21:00 08/28/2015	BY: ENALEMO
MTL: -		© □

BALDOR

TYPE LC, DV, REV, THERMAL, B PH AMPS THRU HTR HVC, 7 LEAD
SH 1 of 1