

BALDOR • RELIANCE

Customer information packet

FDEM4107T-5

46M 2P TEFC HOR 284TS FARM DUTY SE

Class - None

Division - Not Applicable

Specifications

Enclosure	TEFC
Frame	284TS
Frame Material	Iron
Frequency	60.00 Hz
Haz Area Class and Group	None
Haz Area Division	Not Applicable
Motor Letter Type	Three Phase
Output @ Frequency	25.000 HP @ 60 HZ
Phase	3
Synchronous Speed @ Frequency	3600 RPM @ 60 HZ
Voltage @ Frequency	575.0 V @ 60 HZ
Agency Approvals	CURUSEEV NEMA PREMIUM NEMA PREMIUM (OLD LOGO)
Ambient Temperature	40 °C
Auxiliary Box	NO AUXILLARY BOX
Auxiliary Box Lead Termination	None
Base Indicator	Rigid
Bearing Grease Type	Polyrex EM (-20F +300F)
Blower	None
Current @ Voltage	23.000 A @ 575.0 V
Design Code	A
Drip Cover	No Drip Cover
Duty Rating	CONT
Efficiency @ 100% Load	91.7 %
Electrically Isolated Bearing	Not Electrically Isolated
Feedback Device	NO FEEDBACK
Front Shaft Indicator	None
Heater Indicator	No Heater
High Voltage Full Load Amps	23.0 a
Insulation Class	F
Inverter Code	Inverter Ready

Part detail

Revision	L
Type	AC
Mech. spec.	09L813
Base	
Status	PRD/A
Elec. spec.	09WGT369
Layout	09LYL813
Eff. date	12-16-2025
CD Diagram	CD0006
Poles	02
Leads	3#10
Proprietary	False
Created date	06-14-2018

KVA Code	J
Lifting Lugs	Standard Lifting Lugs
Locked Bearing Indicator	Locked Bearing
Motor Lead Quantity/Wire Size	3 @ 10 AWG
Motor Lead Termination	Flying Leads
Motor Standards	NEMA
Motor Type	0946M
Mounting Arrangement	F1
Number of Poles	2
Overall Length	24.77 IN
Power Factor	88
Product Family	General Purpose
Pulley End Bearing Type	Ball
Pulley Face Code	Standard
Pulley Shaft Indicator	Standard
Rodent Screen	None
Service Factor	1.15
Shaft Diameter	1.625 IN
Shaft Ground Indicator	No Shaft Grounding
Shaft Rotation	Reversible
Shaft Slinger Indicator	Shaft Slinger
Speed	3525 rpm
Speed Code	Single Speed
Starting Method	Direct on line
Thermal Device - Bearing	None
Thermal Device - Winding	None
Vibration Sensor Indicator	No Vibration Sensor
Winding Thermal 1	None
Winding Thermal 2	None

Nameplate

NP3126L									
CAT.NO.	FDEM4107T-5								
SPEC.	09L813T369G1								
HP	25								
VOLTS	575								
AMP	23								
RPM	3525								
FRAME	284TS		HZ	60		PH	3		
SER.F.	1.15	CODE	J	DES	A	CL	F		
NEMA-NOM-EFF	91.7	PF	88						
RATING	40C AMB-CONT								
CC	010A								
DE	6311		ODE	6208					
ENCL	TEFC	SN							

AC Induction Motor Performance Data

Record # 59038

Typical performance - not guaranteed values

Winding: 09WGT369-R001		Type: 0946M	Enclosure: TEFC
Nameplate Data		575 V, 60 Hz: Single Voltage Motor	
Rated Output (HP)	25	Full Load Torque	37.15 LB-FT
Volts	575	Start Configuration	direct on line
Full Load Amps	23	Breakdown Torque	120 LB-FT
R.P.M.	3525	Pull-up Torque	71.02 LB-FT
Hz	60 Phase	Locked-rotor Torque	85.16 LB-FT
NEMA Design Code	A KVA Code	Starting Current	200 A
Service Factor (S.F.)	1.15	No-load Current	8.28 A
NEMA Nom. Eff.	91.7 Power Factor	Line-line Res. @ 25°C	0.441 Ω
Rating - Duty	40C AMB-CONT	Temp. Rise @ Rated Load	84°C
S.F. Amps		Temp. Rise @ S.F. Load	103°C
		Locked-rotor Power Factor	29.4
		Rotor inertia	1.17 LB-FT ²

Load Characteristics 575 V, 60 Hz, 25 HP

% of Rated Load	25	50	75	100	125	150	S.F.
Power Factor	54	75	84	88	90	90	89
Efficiency	87	91.3	92.2	91.9	91.1	90.2	91.4
Speed	3582	3565	3550	3529	3509	3487	3517
Line amperes	9.93	13.56	18.15	23.1	28.66	34.35	26.4

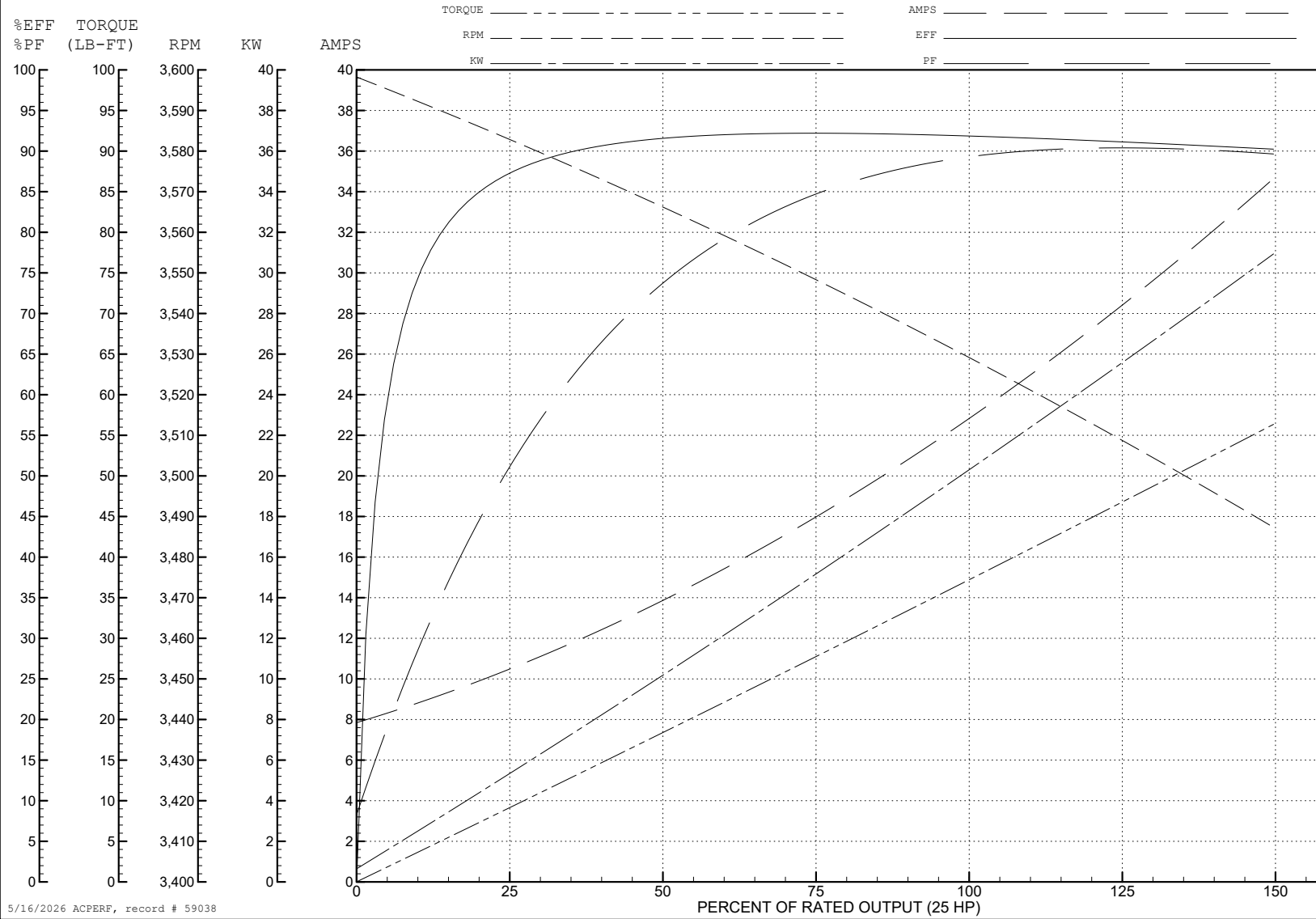
ABB Motors and Mechanical Inc.

WINDING # 09WGT369

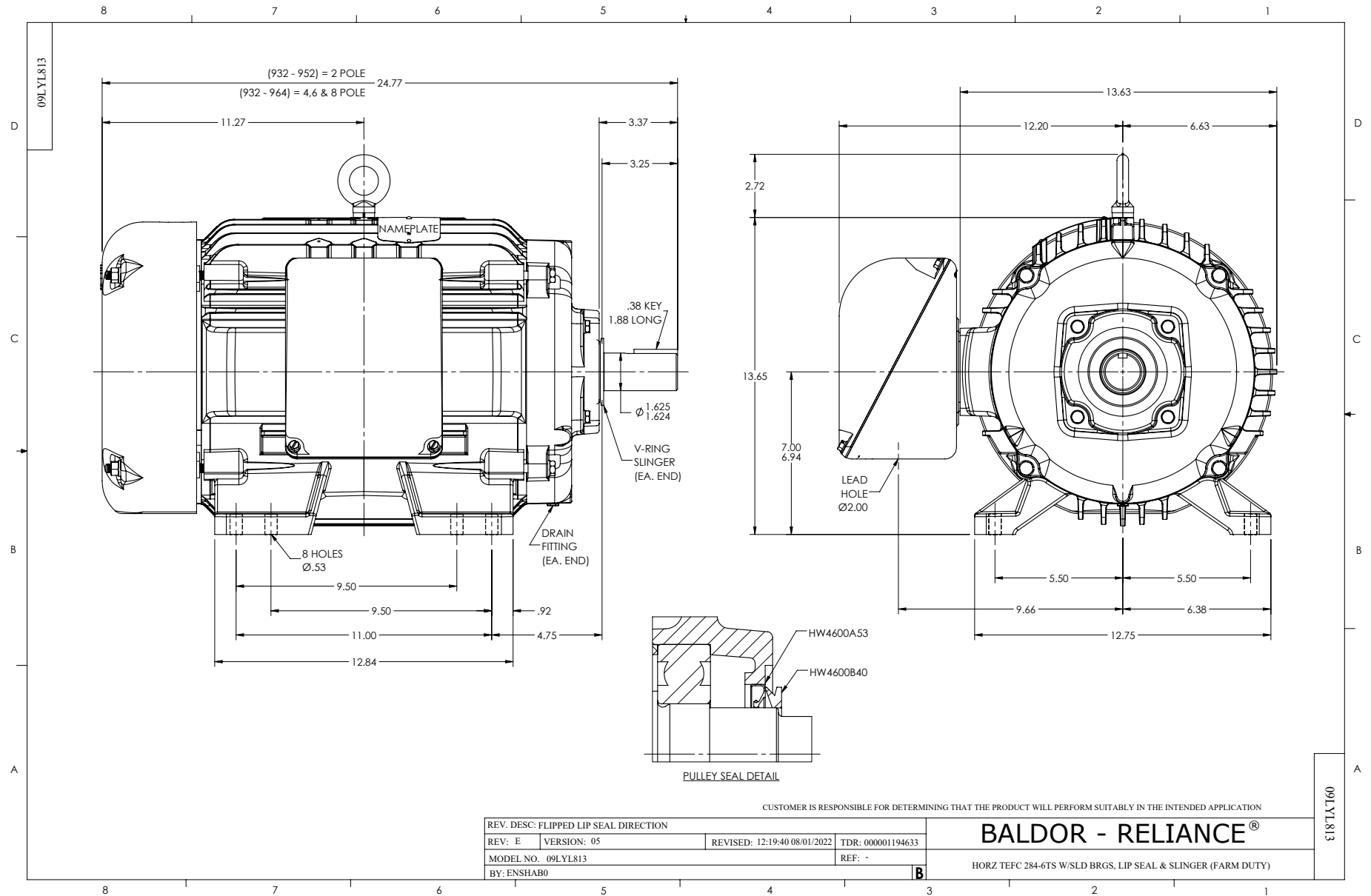
Typical performance - not guaranteed values.

25 HP 3 PH 60 HZ 3525 RPM 575 V 0946M

TORQUES (LB-FT): PO=120 PU=71.02 LR=85.16 LRA=200



5/16/2026 ACPERF, record # 59038



CD0006



NOTES:

1. THREE LEAD MOTOR MAY BE EITHER WYE CONNECTED OR DELTA CONNECTED.
2. INTERCHANGE ANY TWO LINE LEADS TO REVERSE ROTATION.
3. OPTIONAL THERMOSTATS ARE PROVIDED WHEN SPECIFIED.
4. ACTUAL NUMBER OF INTERNAL PARALLEL CIRCUITS MAY VARY.
5. LEAD COLORS ARE OPTIONAL. LEADS MUST BE NUMBERED AS SHOWN.

CD0006

REV. DESC: ADD CLASS CONN00000007		
REV. LTR: E	VERSION: 01	TDR: 000001099922
FILE: \AAA\00005\141	REVISED: 10:24:49 02/19/2019	BY: ENBRIRO
MTL: -	© □	

BALDOR - RELIANCE®

3PH, SV, 3 LEADS, WYE OR DELTA CONNECTED

SH 1 of 1