



---

# Customer information packet

## FDEM3554T

1.5HP, 1750RPM, 3PH, 60HZ, 145T, 3526M, TEFC, F

Class - None

Division - Not Applicable

## Specifications

Enclosure	TEFC
Frame	145T
Frame Material	Steel
Frequency	60.00 Hz
Motor Letter Type	Three Phase
Output @ Frequency	1.500 HP @ 60 HZ
Phase	3
Synchronous Speed @ Frequency	1800 RPM @ 60 HZ
Voltage @ Frequency	460.0 V @ 60 HZ 230.0 V @ 60 HZ
XP Class and Group	None
XP Division	Not Applicable
Agency Approvals	CSA CSA EEV UR
Ambient Temperature	40 °C
Auxillary Box	No Auxillary Box
Auxillary Box Lead Termination	None
Base Indicator	Rigid
Bearing Grease Type	Polyrex EM (-20F +300F)
Blower	None
Current @ Voltage	4.400 A @ 230.0 V 4.600 A @ 208.0 V 2.200 A @ 460.0 V
Design Code	B
Drip Cover	No Drip Cover
Duty Rating	CONT
Efficiency @ 100% Load	86.5 %
Electrically Isolated Bearing	Not Electrically Isolated
Feedback Device	NO FEEDBACK
Front Face Code	Standard
Front Shaft Indicator	None

## Part detail

Revision	J
Type	AC
Mech. spec.	35E2354
Base	
Status	PRD/A
Elec. spec.	35WGL155
Layout	35LYE2354
Eff. date	03-01-2023
CD Diagram	CD0005
Poles	04
Leads	9#18
Proprietary	False
Created date	11-20-2014

Heater Indicator	No Heater
High Voltage Full Load Amps	2.2 a
Insulation Class	F
Inverter Code	Inverter Ready
KVA Code	M
Lifting Lugs	No Lifting Lugs
Locked Bearing Indicator	No Locked Bearing
Motor Lead Exit	Ko Box
Motor Lead Quantity/Wire Size	9 @ 18 AWG
Motor Lead Termination	Flying Leads
Motor Standards	NEMA
Motor Type	3526M
Mounting Arrangement	F1
Number of Poles	4
Overall Length	13.31 IN
Power Factor	72
Product Family	General Purpose
Pulley End Bearing Type	Sealed Bearing
Pulley Face Code	Standard
Pulley Shaft Indicator	Standard
Rodent Screen	None
Service Factor	1.15
Shaft Diameter	0.875 IN
Shaft Extension Location	Pulley End
Shaft Ground Indicator	No Shaft Grounding
Shaft Rotation	Reversible
Shaft Slinger Indicator	Shaft Slinger
Speed	1750 rpm
Speed Code	Single Speed
Starting Method	Direct on line
Thermal Device - Bearing	None
Thermal Device - Winding	None
Vibration Sensor Indicator	No Vibration Sensor
Winding Thermal 1	None

**Winding Thermal 2**

**None**

---

**Nameplate**

<b>NP3126L</b>										
<b>CAT.NO.</b>	FDEM3554T									
<b>SPEC.</b>	35E2354L155G1									
<b>HP</b>	1.5									
<b>VOLTS</b>	230/460									
<b>AMP</b>	4.4/2.2									
<b>RPM</b>	1750									
<b>FRAME</b>	145T	<b>HZ</b>	60	<b>PH</b>	3					
<b>SER.F.</b>	1.15	<b>CODE</b>	M	<b>DES</b>	B	<b>CL</b>	F			
<b>NEMA-NOM-EFF</b>	86.5	<b>PF</b>	72							
<b>RATING</b>	40C AMB-CONT									
<b>CC</b>	010A	<b>USABLE AT 208V</b>						4.6		
<b>DE</b>	6205	<b>ODE</b>	6203							
<b>ENCL</b>	TEFC	<b>SN</b>								

**AC Induction Motor Performance Data**

Record # 53552

Typical performance - not guaranteed values

<b>Winding: 35WGL155-R003</b>		<b>Type: 3526M</b>		<b>Enclosure: TEFC</b>	
<b>Nameplate Data</b>			<b>460 V, 60 Hz: Single Voltage Motor</b>		
<b>Rated Output (HP)</b>	1.5		<b>Full Load Torque</b>	4.46 LB-FT	
<b>Volts</b>	230/460		<b>Start Configuration</b>	direct on line	
<b>Full Load Amps</b>	4.4/2.2		<b>Breakdown Torque</b>	20.6 LB-FT	
<b>R.P.M.</b>	1750		<b>Pull-up Torque</b>	10.1 LB-FT	
<b>Hz</b>	<b>60 Phase</b>	<b>3</b>	<b>Locked-rotor Torque</b>	14.4 LB-FT	
<b>NEMA Design Code</b>	<b>B KVA Code</b>	<b>M</b>	<b>Starting Current</b>	19.3 A	
<b>Service Factor (S.F.)</b>	1.15		<b>No-load Current</b>	1.46 A	
<b>NEMA Nom. Eff.</b>	<b>86.5 Power Factor</b>	<b>72</b>	<b>Line-line Res. @ 25°C</b>	8.81 Ω	
<b>Rating - Duty</b>	40C AMB-CONT		<b>Temp. Rise @ Rated Load</b>	42°C	
<b>S.F. Amps</b>			<b>Temp. Rise @ S.F. Load</b>	50°C	
			<b>Locked-rotor Power Factor</b>	49.6	
			<b>Rotor inertia</b>	0.154 LB-FT <sup>2</sup>	

**Load Characteristics 460 V, 60 Hz, 1.5 HP**

<b>% of Rated Load</b>	<b>25</b>	<b>50</b>	<b>75</b>	<b>100</b>	<b>125</b>	<b>150</b>	<b>S.F.</b>
<b>Power Factor</b>	30	49	63	71	77	82	78
<b>Efficiency</b>	76.3	84.7	87.1	87.6	87.1	86.1	87.6
<b>Speed</b>	1791	1782	1772	1762	1750	1738	1759
<b>Line amperes</b>	1.53	1.68	1.92	2.24	2.62	3	2.37

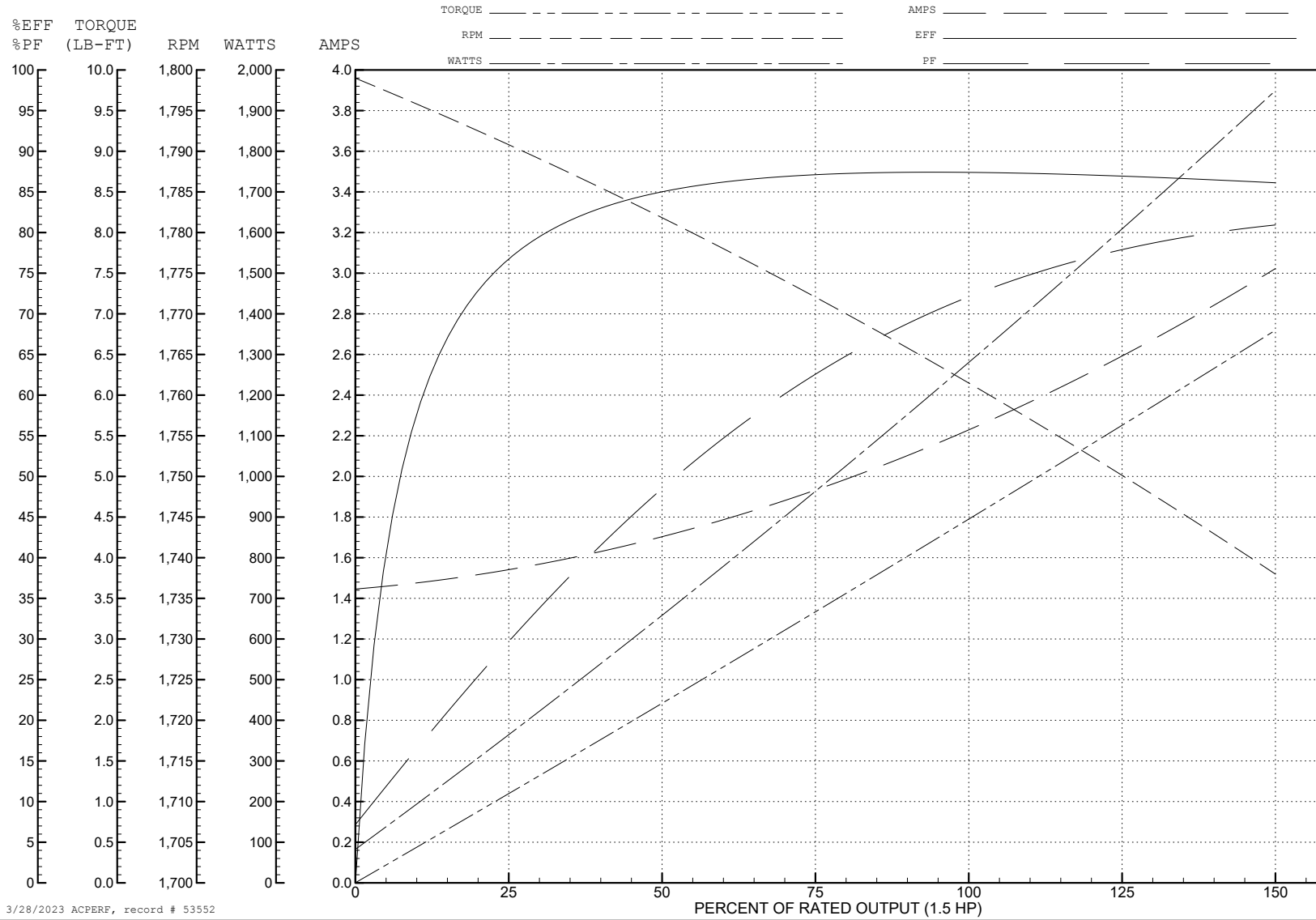
ABB Motors and Mechanical Inc.

WINDING # 35WGL155

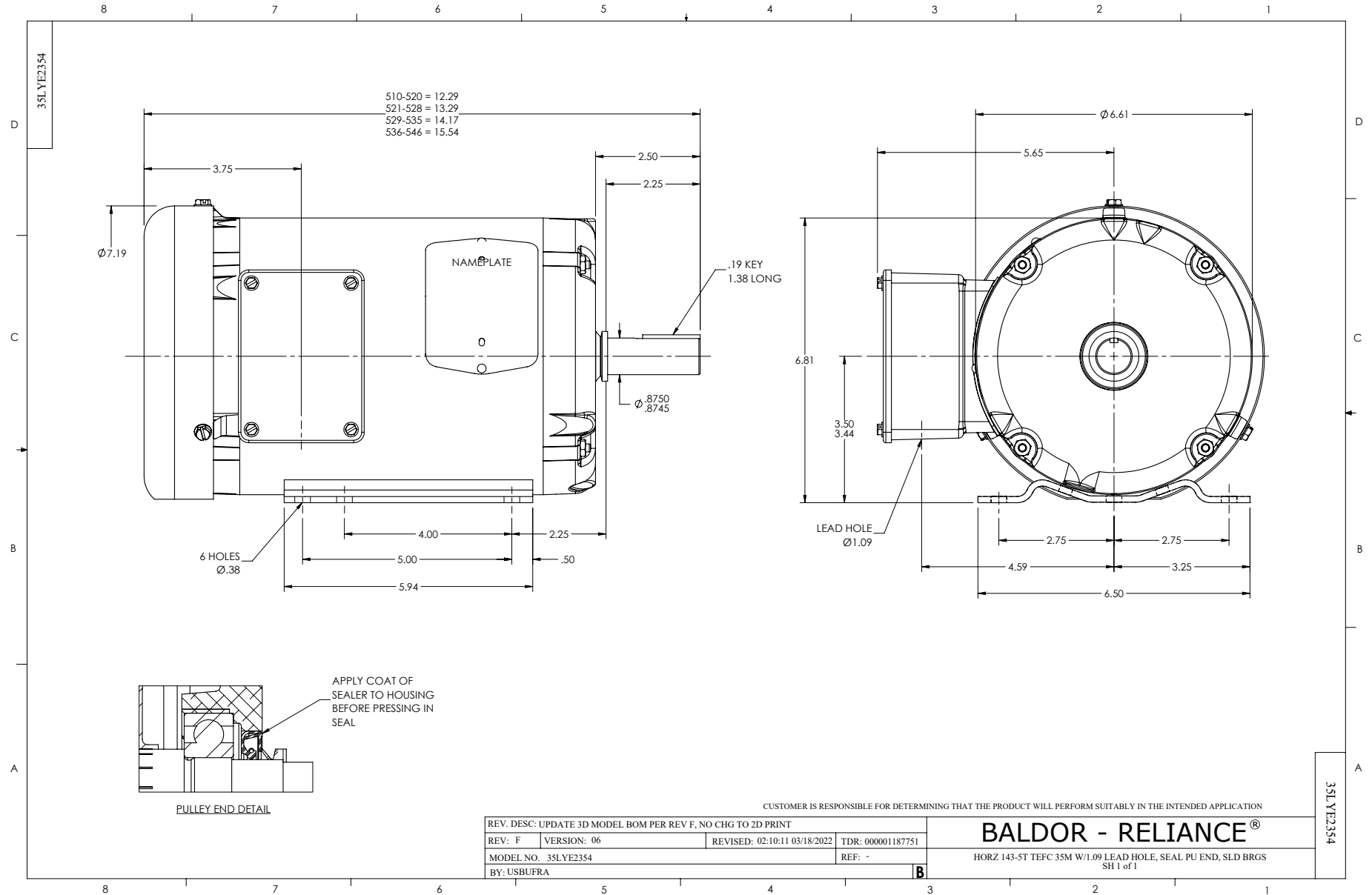
Typical performance - not guaranteed values.

1.5 HP 3 PH 60 HZ 1750 RPM 460 V 3526M

TORQUES (LB-FT): PO=20.6 PU=10.1 LR=14.4 LRA=19.3



3/28/2023 ACPERF, record # 53552





CD0005



LOW VOLTAGE  
(2Y)



LINE

HIGH VOLTAGE  
(1Y)



LINE

NOTES:

1. INTERCHANGE ANY TWO LINE LEADS TO REVERSE ROTATION.
2. OPTIONAL THERMOSTATS ARE PROVIDED WHEN SPECIFIED.
3. ACTUAL NUMBER OF INTERNAL PARALLEL CIRCUITS MAY BE A MULTIPLE OF THOSE SHOWN ABOVE.
4. LEAD COLORS ARE OPTIONAL. LEADS MUST ALWAYS BE NUMBERED AS SHOWN.

CD0005

REV. DESC: REVISE TO SHOW OPTIONAL COLORS			
REV. LTR: E	BY: JLP	REVISED: 01/19/99 10:15	TDR: 0171435
S00000		FILE: AAA00005140	MDL: -
		MTL: -	

**BALDOR ELECTRIC Co.**

3PH, DV, 9 LEADS