

ABB BALDOR RELIANCE III

Customer information packet

FDAOL3507A

.75HP, 1725RPM, 1PH, 60HZ, 56H, 3428LC, TEAO, F

Class - None

Division - Not Applicable

Specifications

Enclosure	TEAO
Frame	56H
Frame Material	Steel
Frequency	60.00 Hz
Haz Area Class and Group	None
Haz Area Division	Not Applicable
Motor Letter Type	Cap Start, Cap Run
Output @ Frequency	.750 HP @ 60 HZ
Phase	1
Synchronous Speed @ Frequency	1800 RPM @ 60 HZ
Voltage @ Frequency	115.0 V @ 60 HZ 230.0 V @ 60 HZ
Ambient Temperature	40 °C
Auxiliary Box	NO AUXILLARY BOX
Auxiliary Box Lead Termination	None
Base Indicator	Rigid
Bearing Grease Type	Polyrex EM (-20F +300F)
Blower	None
Current @ Voltage	4.100 A @ 230.0 V 5.400 A @ 208.0 V 8.200 A @ 115.0 V
Design Code	N
Drip Cover	No Drip Cover
Duty Rating	CONT
Efficiency @ 100% Load	74.0 %
Electrically Isolated Bearing	Not Electrically Isolated
Feedback Device	NO FEEDBACK
Front Face Code	Terminal Panel
Front Shaft Indicator	None
Heater Indicator	No Heater
High Voltage Full Load Amps	4.1 a
Insulation Class	F

Part Detail

Revision	E
Type	AC
Mech. spec.	34M951
Base	
Status	PRD/A
Elec. spec.	34WGY166
Layout	34LYM951
Eff. date	07-25-2024
CD Diagram	CD0320
Poles	04
Leads	6#18,1#14 #4TH
Proprietary	False
Created date	08-11-2017

Inverter Code	Not Inverter
KVA Code	L
Lifting Lugs	No Lifting Lugs
Locked Bearing Indicator	No Locked Bearing
Motor Lead Exit	Terminal Panel Or Lead Hole
Motor Lead Quantity/Wire Size	6 @ 18 AWG
Motor Lead Termination	Flying Leads
Motor Standards	NEMA
Motor Type	3428LC
Mounting Arrangement	F1
Number of Poles	4
Overall Length	12.08 IN
Power Factor	80
Product Family	General Purpose
Pulley End Bearing Type	Ball
Pulley Face Code	Standard
Pulley Shaft Indicator	Standard
Rodent Screen	None
RoHS Status	ROHS COMPLIANT
Service Factor	1.20
Shaft Diameter	0.625 IN
Shaft Extension Location	Pulley End
Shaft Ground Indicator	No Shaft Grounding
Shaft Rotation	Reversible
Shaft Slinger Indicator	Shaft Slinger
Speed	1725 rpm
Speed Code	Single Speed
Starting Method	Direct on line
Thermal Device - Bearing	None
Thermal Device - Winding	None
Vibration Sensor Indicator	No Vibration Sensor
Winding Thermal 1	Automatic Thermal Overload
Winding Thermal 1 Location	SB
Winding Thermal 2	None

Nameplate

NP1280L									
CAT.NO.	FDAOL3507A								
SPEC.	34M951Y166G1								
HP	.75								
VOLTS	115/230								
AMP	8.2/4.1								
RPM	1725								
FRAME	56H	HZ	60	PH	1				
SER.F.	1.20	CODE	L	DES	N	CL	F		
NEMA-NOM-EFF	74	PF	80						
RATING	40C AMB-CONT								
CC									
DE	6203	ODE	6203						
ENCL	TEAO	SN							
	SFA 9.4/4.7								

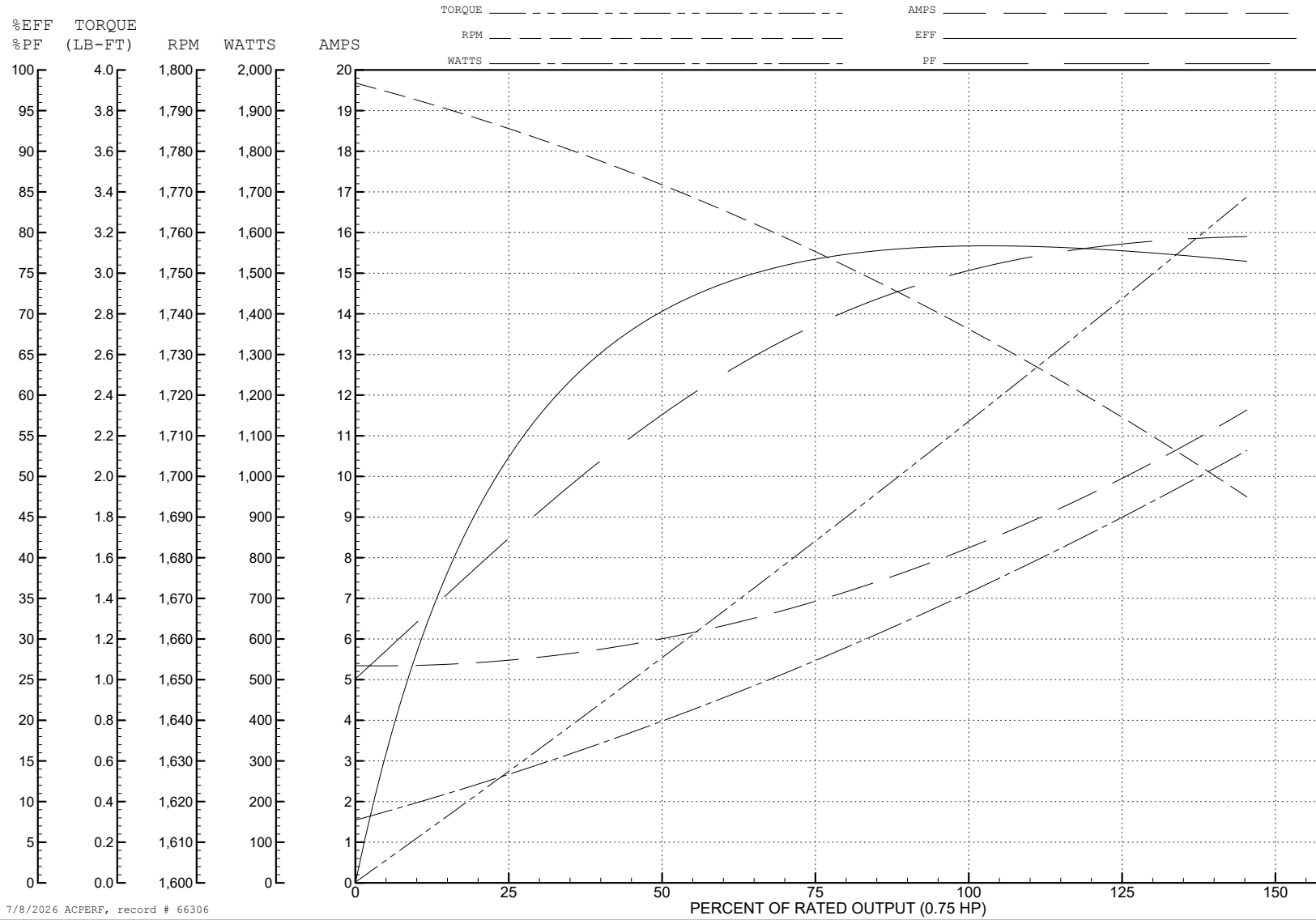
ABB Motors and Mechanical Inc.

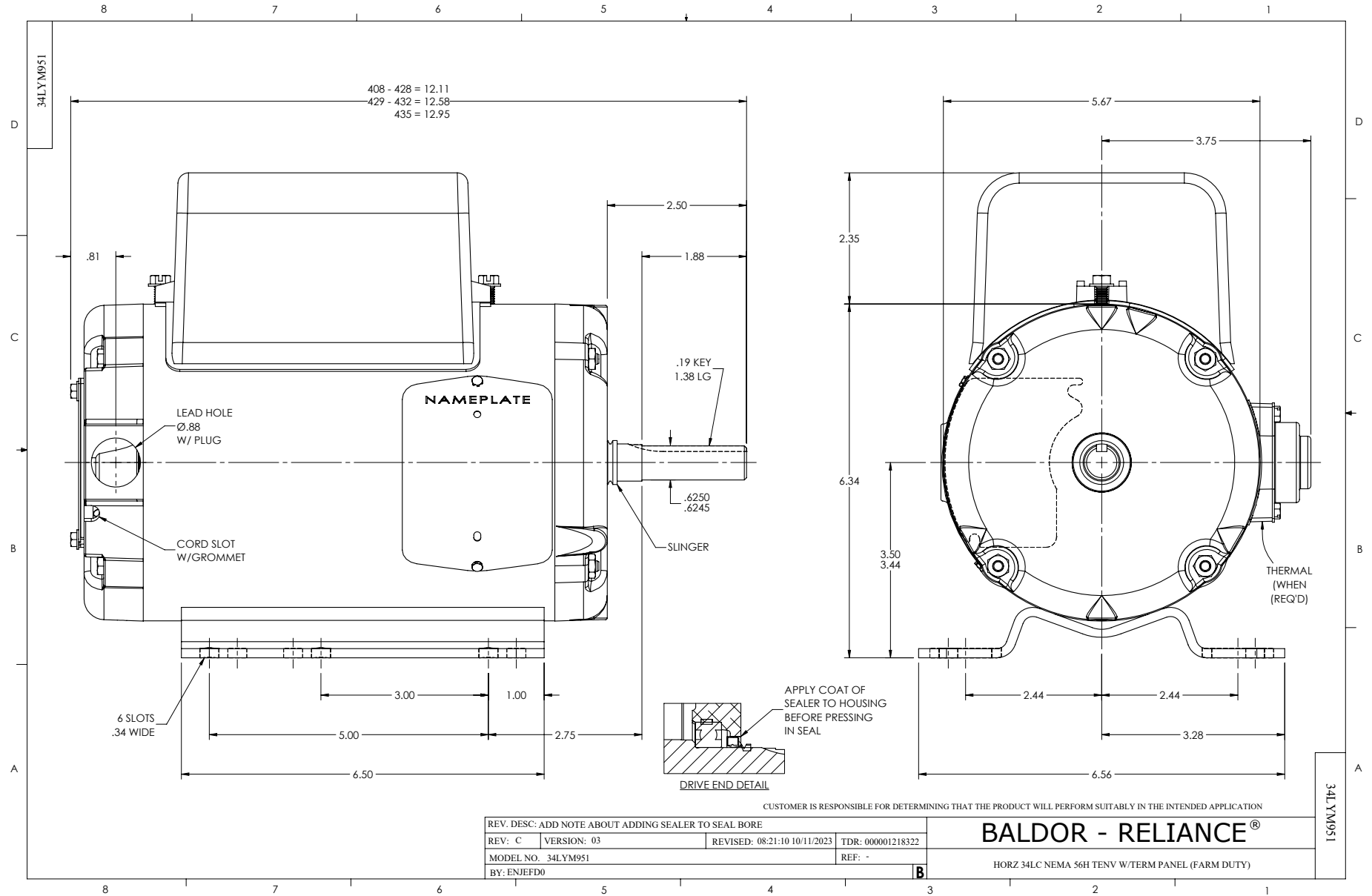
WINDING # 34WGY166

Typical performance - not guaranteed values.

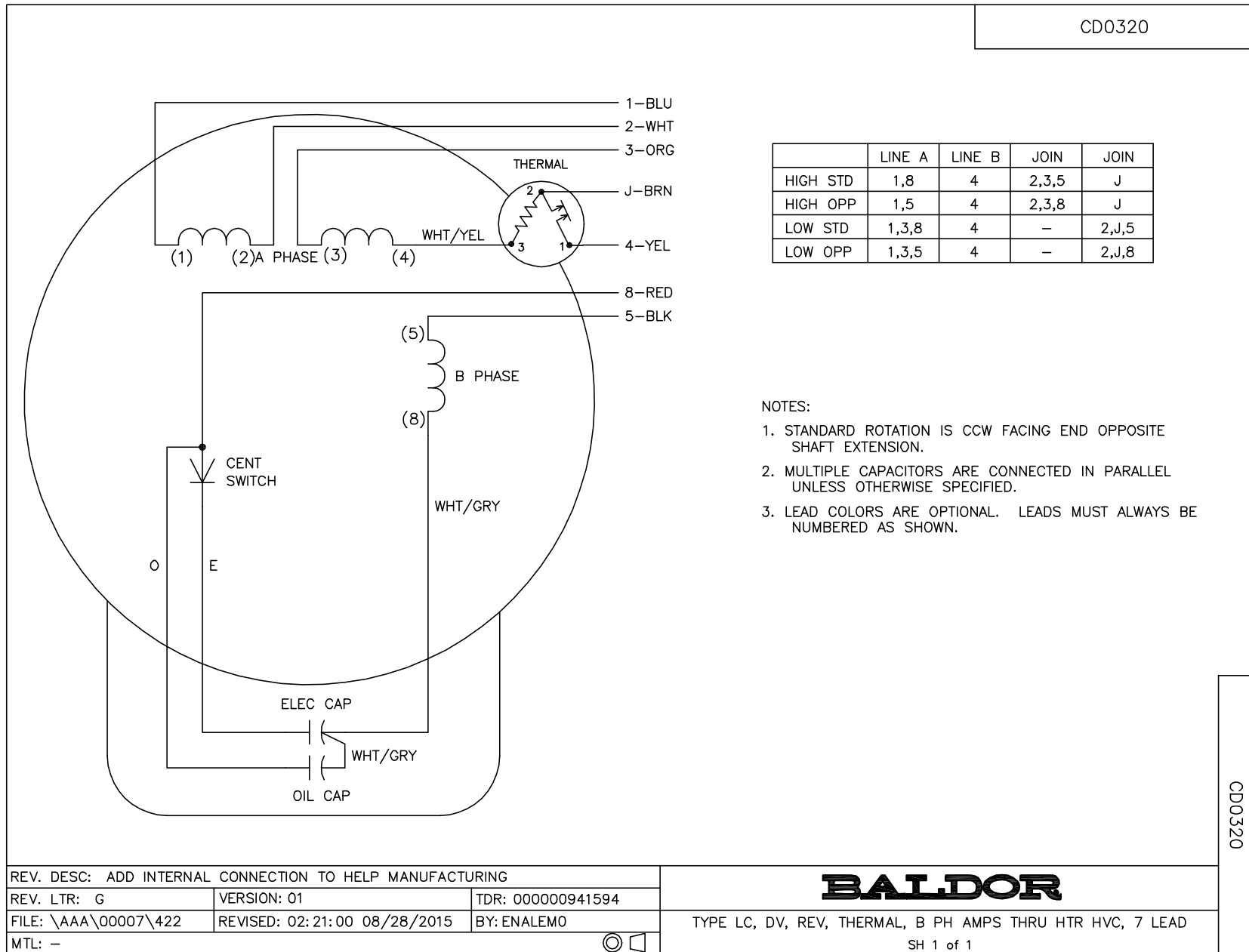
0.75 HP 1 PH 60 HZ 1725 RPM 115 V 3428LC

TORQUES (LB-FT): PO=5.7 PU=4.7 LR=7.5 LRA=62





CD0320



CD0320

REV. DESC: ADD INTERNAL CONNECTION TO HELP MANUFACTURING		
REV. LTR: G	VERSION: 01	TDR: 00000941594
FILE: \AAA\00007\422	REVISED: 02: 21: 00 08/28/2015	BY: ENALEMO
MTL: -		© □

BALDOR

TYPE LC, DV, REV, THERMAL, B PH AMPS THRU HTR HVC, 7 LEAD
SH 1 of 1