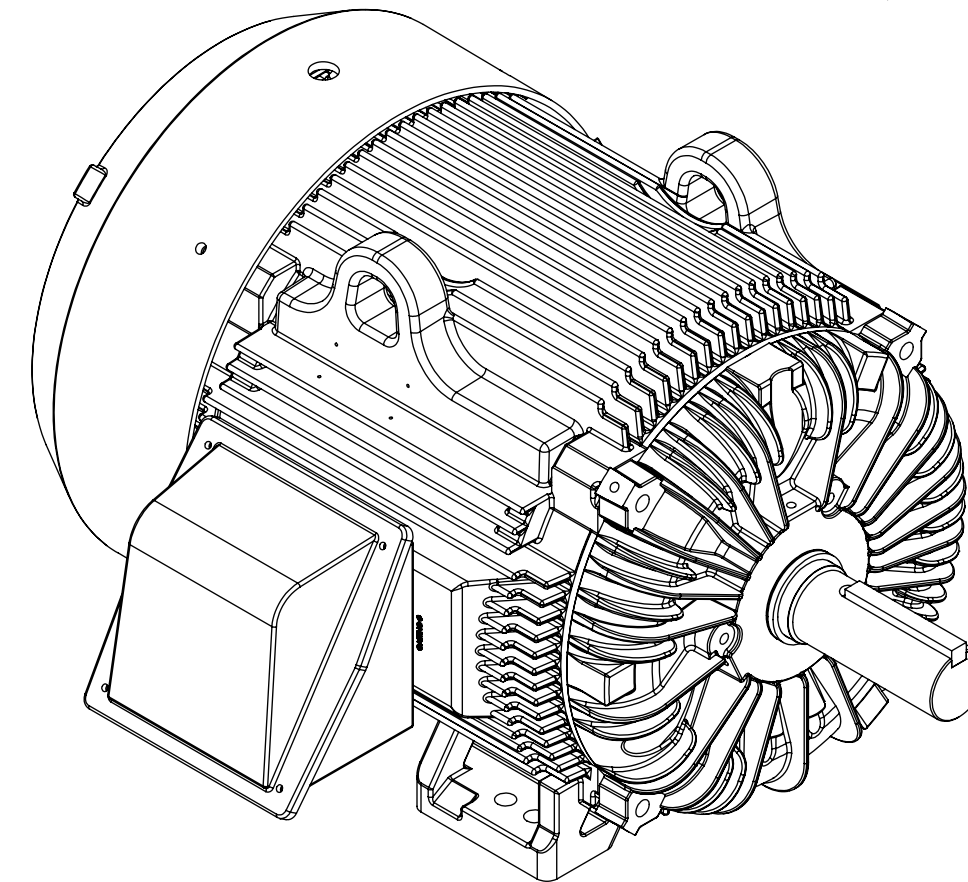
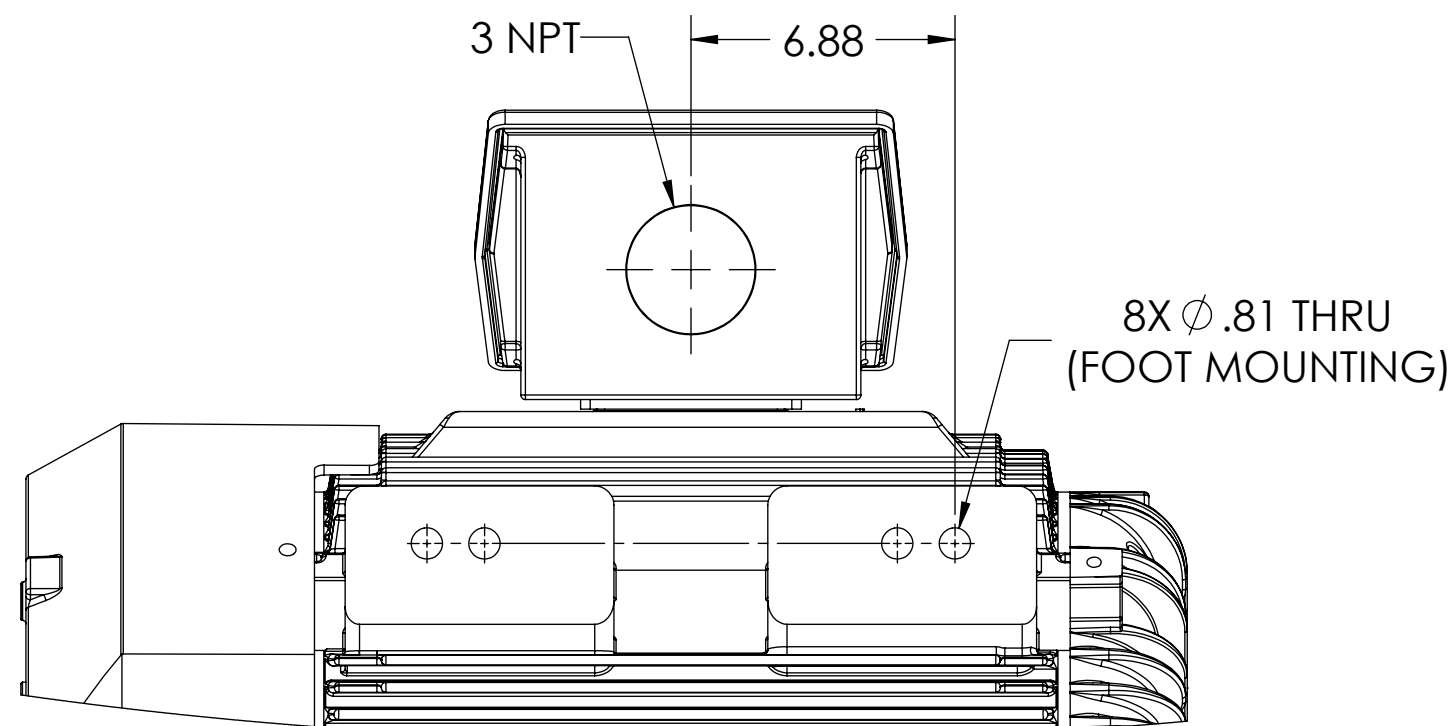
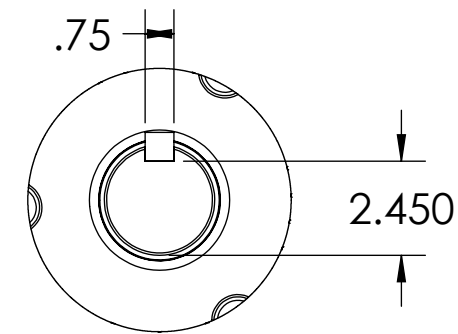


COOLING: FAN COOLED



G404/405T TEFC F1 FOOT MOUNT/CAST IRON CONDUIT BOX

IF MOUNTING CLEARANCE DETAILS ARE REQUIRED, CONSULT FACTORY.
MAX PERMISSIBLE SHAFT RUNOUT WHEN MEASURED AT END OF STANDARD SHAFT EXTENSION IS .003" T.I.R.

DUTY MASTER ALTERNATING CURRENT MOTORS
SQUIRREL-CAGE INDUCTION

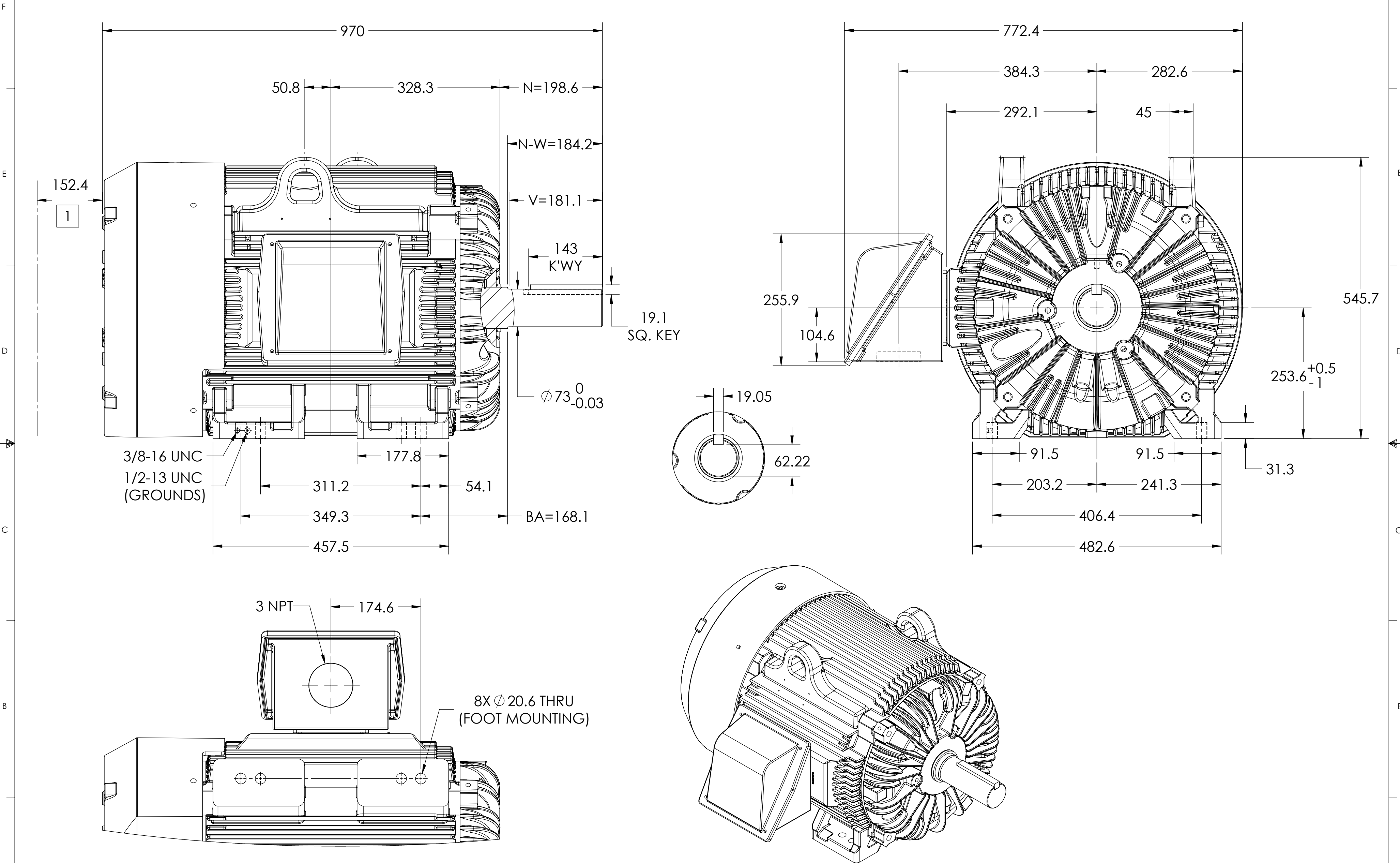
617429-533

ENCLOSURE: TOTALLY ENCLOSED

MOUNTING: FOOT, F-1 SIDE

G404T/G405T FRAME MOUNTING HOLES

COOLING: FAN COOLED



DIMENSIONS ARE IN MILLIMETERS.
WEIGHT (KG): 526, MOTOR WEIGHTS MAY VARY BY 15% DEPENDING ON RATING.
CUSTOMER IS RESPONSIBLE FOR DETERMINING THAT MOTOR PERFORMANCE IS SUITABLE IN THE APPLICATION.

| | | | |
|----------------------------------|-------------|------------------------------|-------------------|
| REV. DESC: CORRECT SH2 LBS TO KG | | | |
| REV: C | VERSION: 03 | REVISED: 01:28:40 05/30/2023 | TDR: 000001209710 |
| MODEL NO. 617429-533 | | | REF: |
| BY: USJEDIL | | Material: | C |

BALDOR

G404/405T TEFC F1 FOOT MOUNT/CAST IRON CONDUIT BOX

SHEET NUMBER
2 OF 2

617429-533

1 OBSTRUCTION MUST NOT ENCROACH ON AIR INLET.

IF MOUNTING CLEARANCE DETAILS ARE REQUIRED, CONSULT FACTORY.
MAX PERMISSIBLE SHAFT RUNOUT WHEN MEASURED AT END OF STANDARD SHAFT EXTENSION IS .08 T.I.R.

617429-533