

DUTY MASTER ALTERNATING CURRENT MOTORS  
SQUIRREL-CAGE INDUCTION

617428-593

ENCLOSURE: TOTALLY ENCLOSED

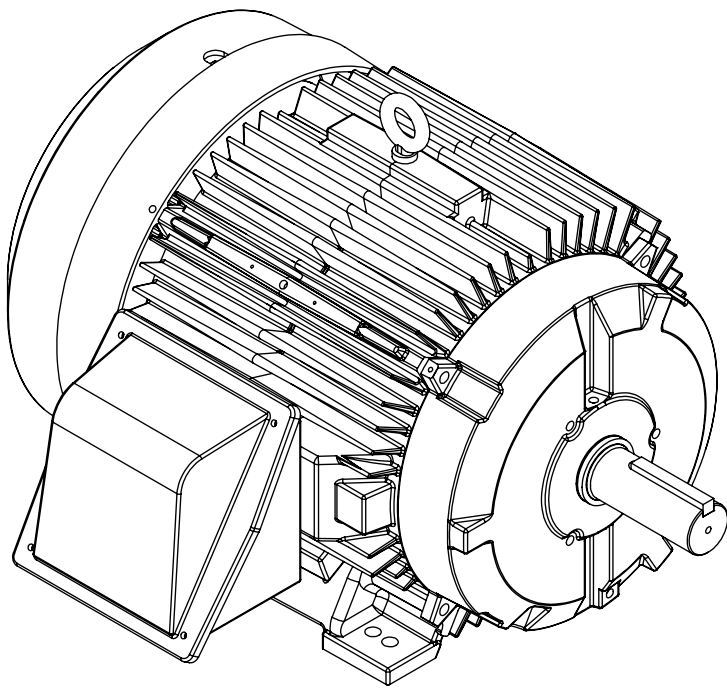
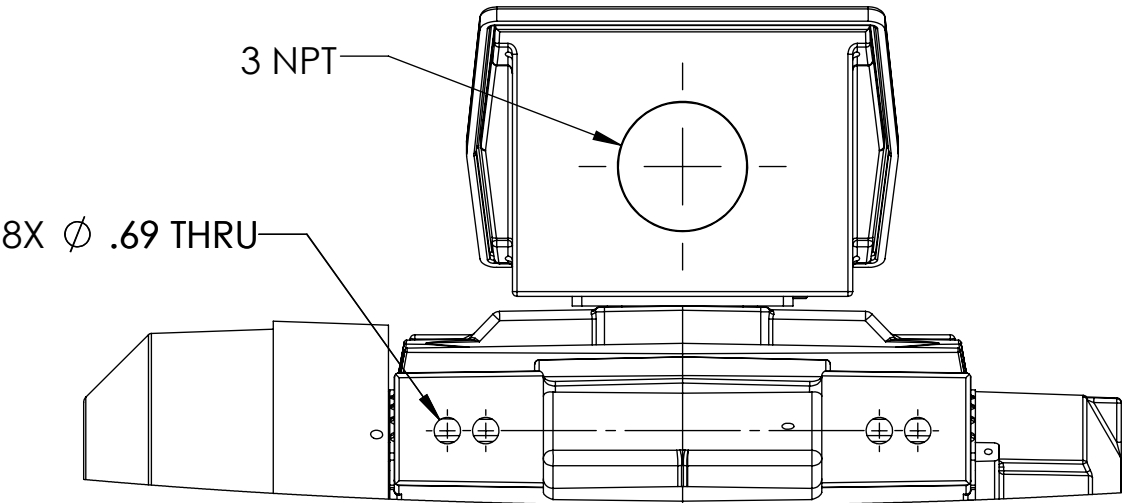
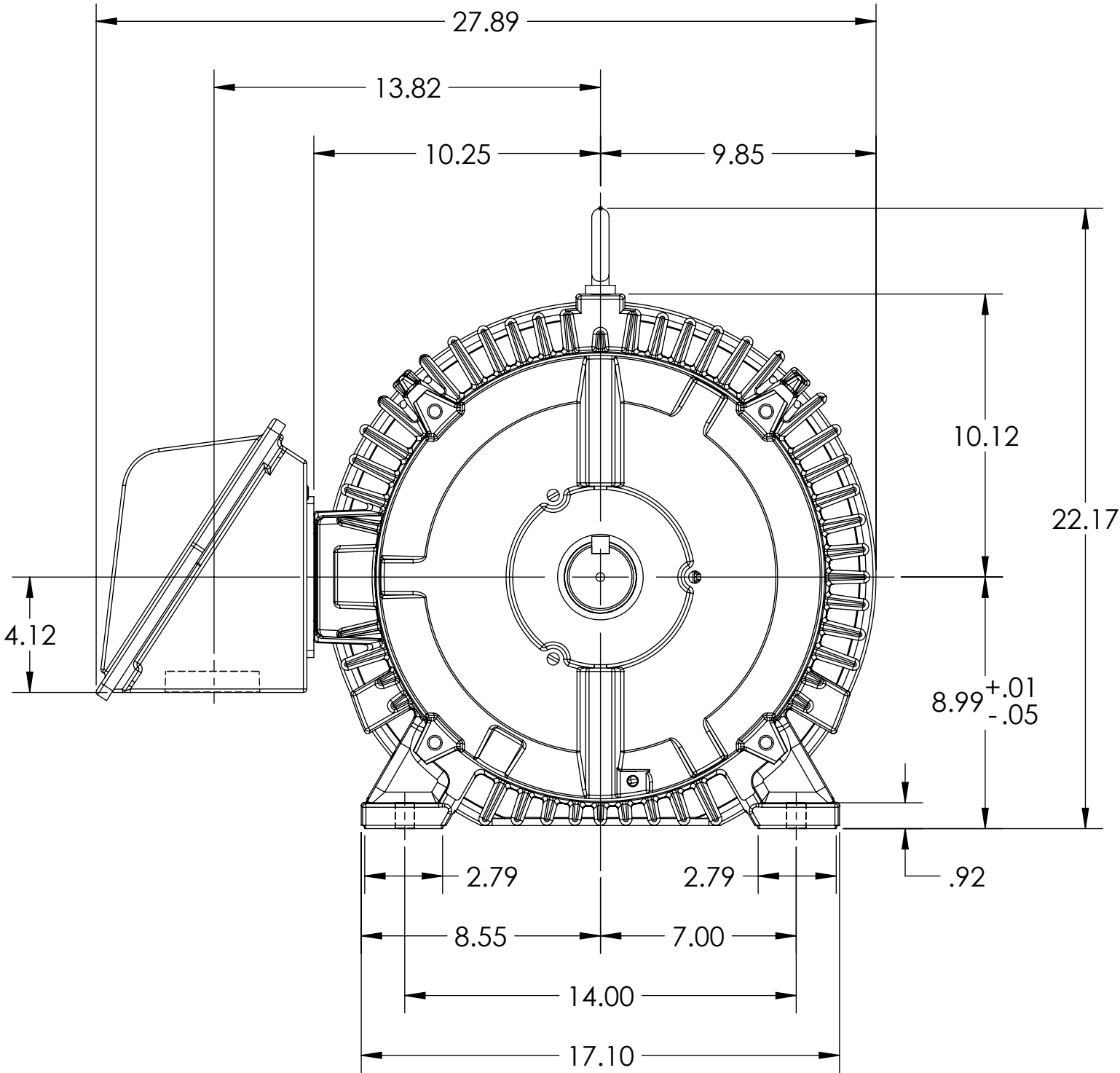
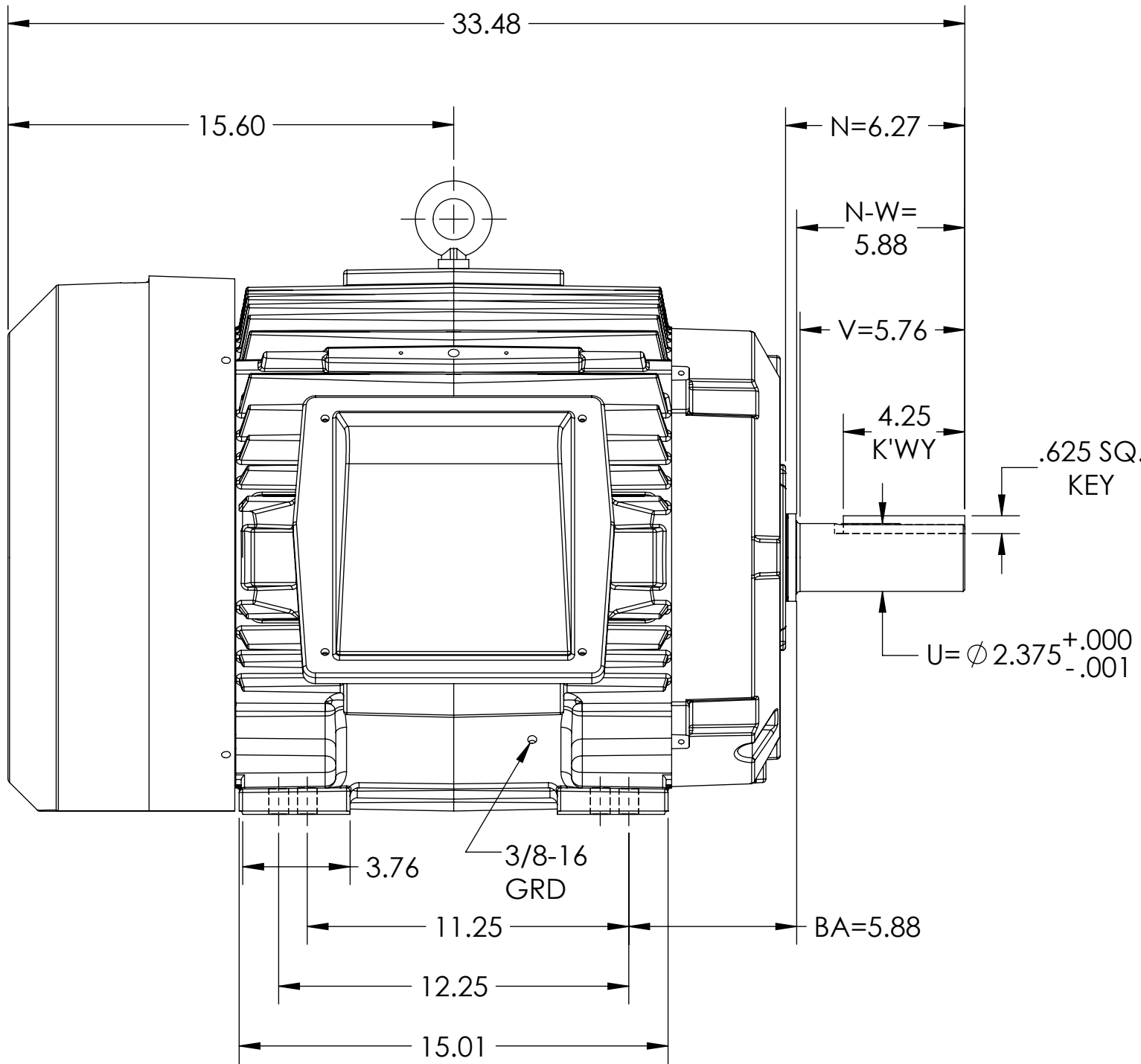
FRAME E365T  
INCLUDES E364T FRAME MOUNTING HOLES

COOLING: FAN COOLED

MOUNTING: FOOT, F-1 SIDE

CAST IRON CONDUIT BOX

ENCLOSURE ENHANCEMENT: SEVERE DUTY



DIMENSIONS ARE IN INCHES

CUSTOMER IS RESPONSIBLE FOR DETERMINING THAT MOTOR PERFORMANCE IS SUITABLE IN THE APPLICATION.

IF MOUNTING CLEARANCE DETAILS ARE REQUIRED, CONSULT FACTORY.  
MAXIMUM PERMISSIBLE SHAFT RUNOUT WHEN MEASURED AT END OF  
STANDARD SHAFT EXTENSION IS .003" T.I.R. TO 5 INCH DIA.

REV. DESC: REMOVE SLINGER NOTE			
REV: A	VERSION: 01	REVISED: 08:44:29 03/26/2020	TDR: 000001135936
MODEL NO. 617428-593			
BY: RAGJSS1			

**BALDOR**

E365/4T TEFC F1 FT SEVERE-

617428-593

617428-593