

ABB BALDOR RELIANCE III

Customer information packet

EWDM4310T

60HP, 3560RPM, 3PH, 60HZ, 364TS, TEFC, F1

Class - None

Division - Not Applicable

Specifications

Enclosure	TEFC
Frame	364TS
Frame Material	Iron
Frequency	60.00 Hz
Haz Area Class and Group	None
Haz Area Division	Not Applicable
Motor Letter Type	Three Phase
Output @ Frequency	60.000 HP @ 60 HZ
Phase	3
Synchronous Speed @ Frequency	3600 RPM @ 60 HZ
Voltage @ Frequency	230.0 V @ 60 HZ 460.0 V @ 60 HZ
Agency Approvals	CSA EEV CCSA US
Ambient Temperature	40 °C
Auxiliary Box	NO AUXILLARY BOX
Base Indicator	Rigid
Bearing Grease Type	Polyrex EM (-20F +300F)
Current @ Voltage	66.100 A @ 460.0 V 132.000 A @ 230.0 V
Design Code	B
Drip Cover	No Drip Cover
Duty Rating	CONT
Efficiency @ 100% Load	93.6 %
Enclosure Modification	Severe Duty Features
Feedback Device	NO FEEDBACK
Heater Indicator	No Heater
High Voltage Full Load Amps	66.1 a
Insulation Class	F
Inverter Code	Inverter Ready
IP Rating	IP55
KVA Code	G

Part Detail

Revision	A
Type	AC
Mech. spec.	
Base	
Status	PRD/A
Elec. spec.	A36WG1558
Layout	617428-298
Eff. date	10-01-2021
CD Diagram	416820-002
Poles	02
Leads	3#4,6#6
Proprietary	False
Created date	08-30-2019

Lifting Lugs	Standard Lifting Lugs
Motor Lead Quantity/Wire Size	3 @ 4 AWG
Motor Standards	NEMA
Motor Type	A36056M
Mounting Arrangement	F1
Number of Poles	2
Overall Length	31.35 IN
Power Factor	91
Product Family	Washdown Features
Pulley End Bearing Type	Ball
Pulley Face Code	Standard
Service Factor	1.15
Shaft Diameter	1.875 IN
Shaft Ground Indicator	No Shaft Grounding
Shaft Rotation	Reversible
Shaft Slinger Indicator	Shaft Slinger
Speed	3560 rpm
Speed Code	Single Speed
Starting Method	Direct on line
Thermal Device - Bearing	None
Thermal Device - Winding	None

Nameplate

NP2496L
MOBIL POLYREX EM

NP2428L

SPEC NO.	A36-7818-1558	CAT.NO.	EWDM4310T	FRAME	364TS				
HP	60	VOLTS	230/460	PHASE	3	DESIGN	B	TYPE	P
RPM	3560	AMPS	132/66.1	HZ	60	AMB	40	SF	1.15
DRIVE END BEARING	65BC03JGG30A	DUTY	CONT	INSUL.CLASS	F				
OPP D.E. BEARING	65BC03JGG30A	ENCL	TEFC	CODE	G				
SER.NO.		POWER FACTOR	91	NEMA-NOM-EFFICIENCY	93.6				
				MAX CORR KVAR	5	GUARANTEED EFFICIENCY	92.4		
				NEMA NOM/CSA QUOTED EFF					
	IP55								
	10:1CT AND 10:1VT ON VPWM INVE			RTER, 1.00SF		MOTOR WEIGHT	901		

REL. S.O.	FRAME	HP	TYPE	PHASE/ HERTZ	RPM	VOLTS
	364TS	60	P	3/60	3560	230/460
AMPS	DUTY	AMB °C/ INSUL.	S.F.	NEMA DESIGN	CODE LETTER	ENCL.
132/66.1	CONT	40/F	1.15	B	G	TEFC
E/S	ROTOR	TEST S.O.	TEST DATE	STATOR RES. @25 °C OHMS (BETWEEN LINES)		
491281	418141005XE	---	---	.0254/.101		

PERFORMANCE

LOAD	HP	AMPERES	RPM	% POWER FACTOR	% EFFICIENCY
NO LOAD	0	14.0	3600	13.0	0
1/4	15.0	21.3	3590	74.9	87.8
2/4	30.0	34.5	3580	88.3	92.4
3/4	45.0	49.7	3569	90.8	93.5
4/4	60.0	66.1	3558	90.8	93.6
5/4	75.0	83.0	3546	90.7	93.3

SPEED TORQUE

	RPM	TORQUE % FULL LOAD	TORQUE LB.-FT.	AMPERES
LOCKED ROTOR	0	203	180	435
PULL UP	1565	175	155	355
BREAKDOWN	3397	231	205	212
FULL LOAD	3558	100	88.6	66.1

AMPERES SHOWN FOR 460. VOLT CONNECTION. IF OTHER VOLTAGE CONNECTIONS ARE AVAILABLE, THE AMPERES WILL VARY INVERSELY WITH THE RATED VOLTAGE

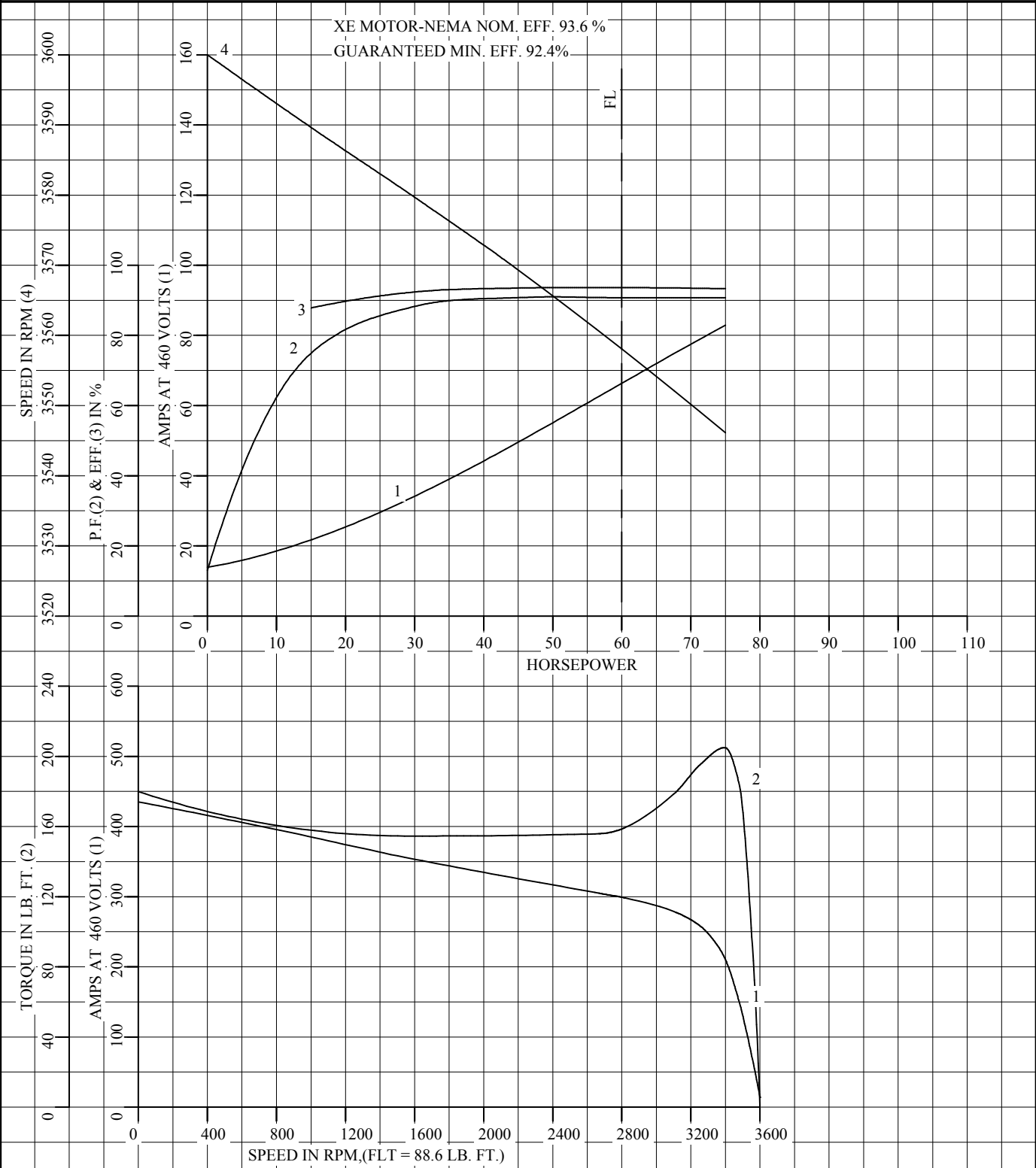
REMARKS: TYPICAL DATA
XE MOTOR-NEMA NOM. EFF. 93.6 %
GUARANTEED MIN. EFF. 92.4%



DR. BY W. L. SMITH
CK. BY G. R. WEBB
APP. BY E. J. CHRISTIAN
DATE 03/11/02

**A-C MOTOR
PERFORMANCE DATA** A36WG1558-R007
ISSUE DATE 08/30/19

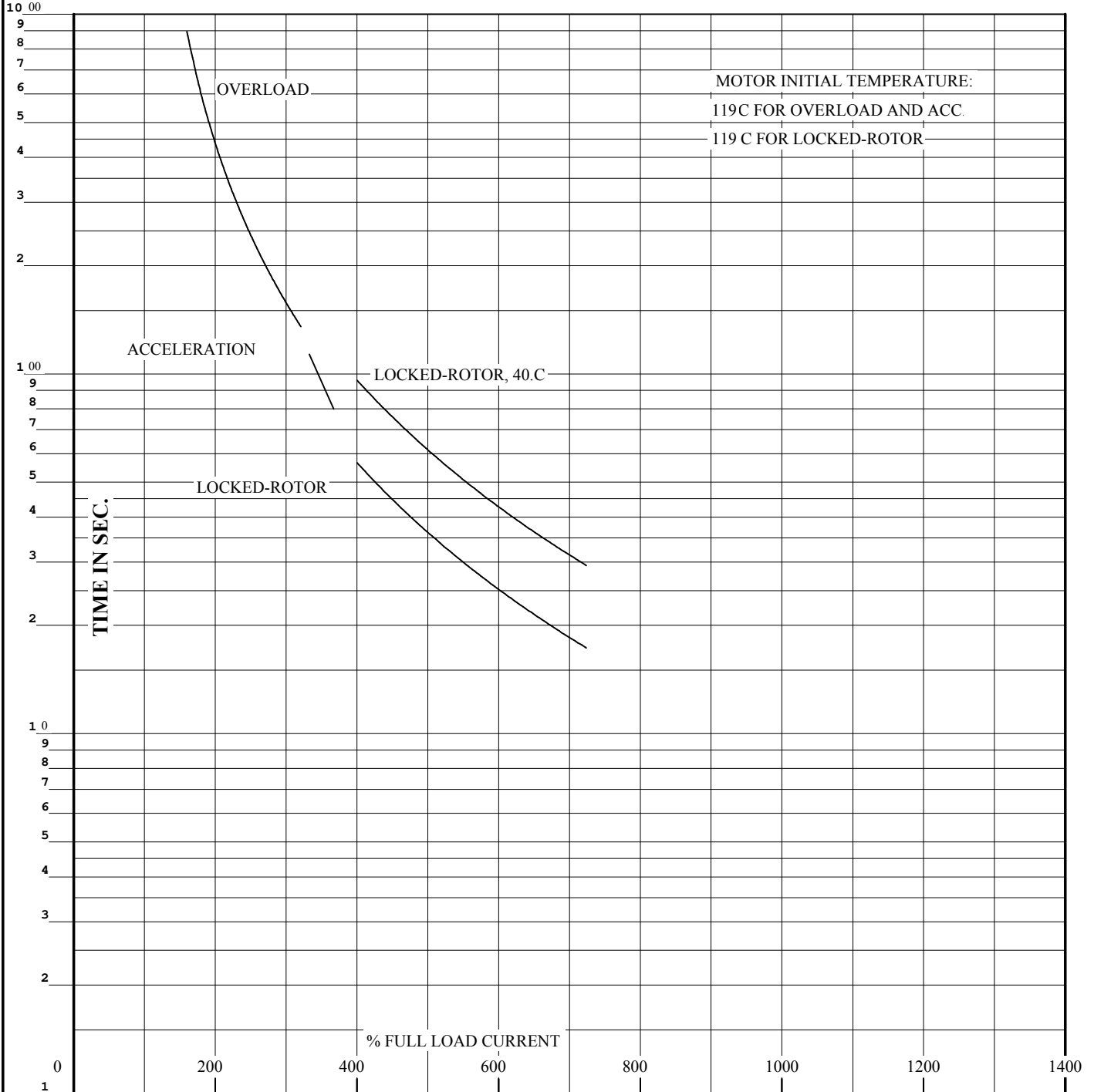
REL S.O.	RPM 3560	S.F. 1.15	ROTOR 418141005XE
FRAME 364TS	VOLTS 230/460	NEMA DESIGN B	TEST S.O. TYPICAL DATA
HP 60	AMPS 132/66.1	CODE LETTER G	TEST DATE ---
TYPE P	DUTY CONT	ENCLOSURE TEFC	STATOR RES. @ 25 °C .0254/.101
PHASE/HERTZ 3/60	AMB °C/INSUL 40/F	E/S 491281	OHMS (BETWEEN LINES)



DR. BY W. L. SMITH
 CK. BY G. R. WEBB
 APP. BY E.J. CHRISTIAN
 DATE 03/11/02

**A-C MOTOR
PERFORMANCE
CURVES** **A36WG1558-R007**
 ISSUE DATE **08/30/19**

REL. S.O.	RPM 3560	S.F. 1.15	ROTOR 418141005XE
FRAME 364TS	VOLTS 230/460	NEMA DESIGN B	TEST S.O. TYPICAL DATA
HP 60	AMPS 132/66.1	CODE LETTER G	TEST DATE ---
TYPE P	DUTY CONT	ENCLOSURE TEFC	STATOR RES. @ 25 °C .0254/.101
PHASE/HERTZ 3/60	AMB °C/INSUL 40/F	E/S 491281	OHMS (BETWEEN LINES)



THERMAL LIMIT CURVE

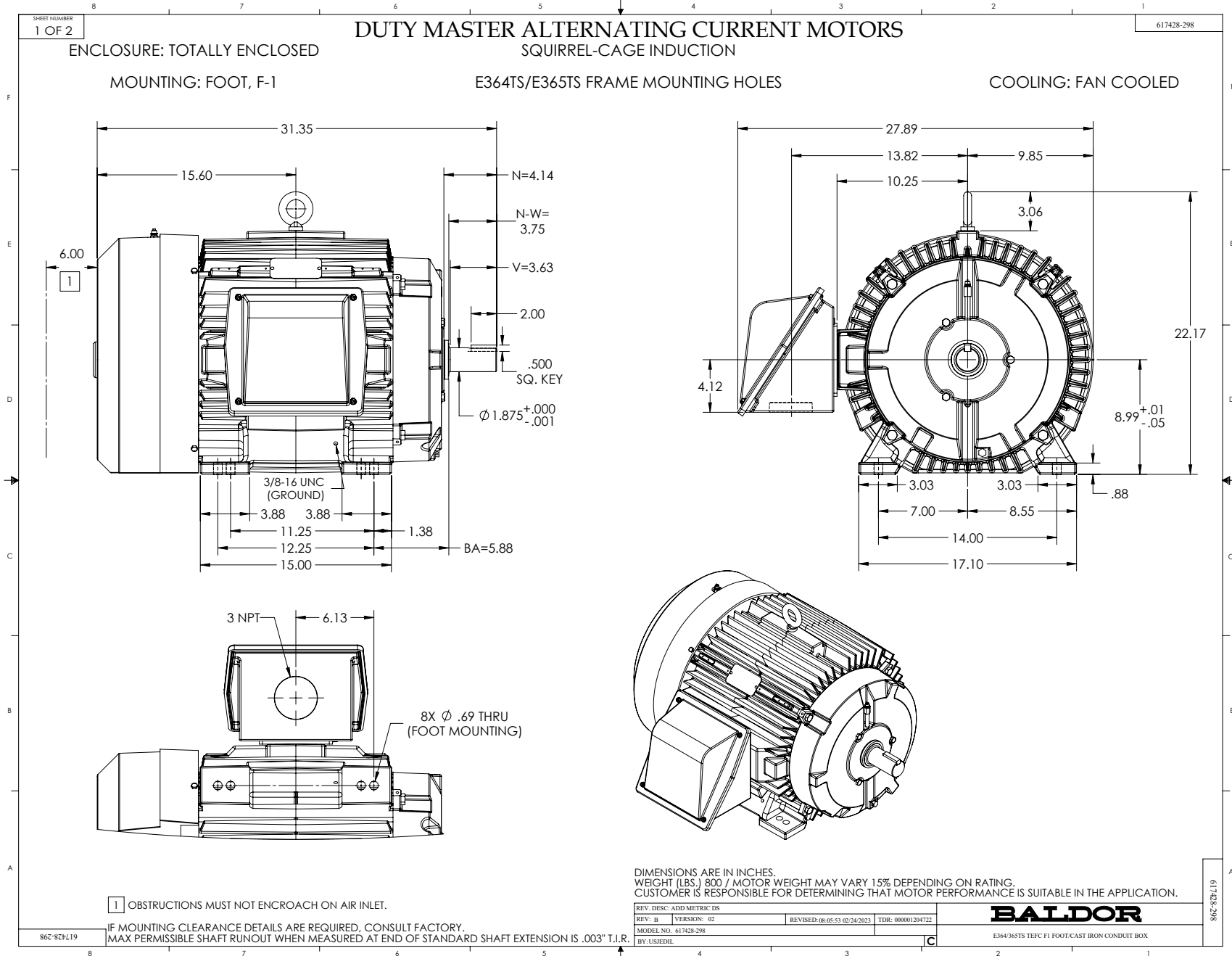
REMARKS: XE MOTOR-NEMA NOM. EFF. 93.6 %
GUARANTEED MIN. EFF. 92.4%

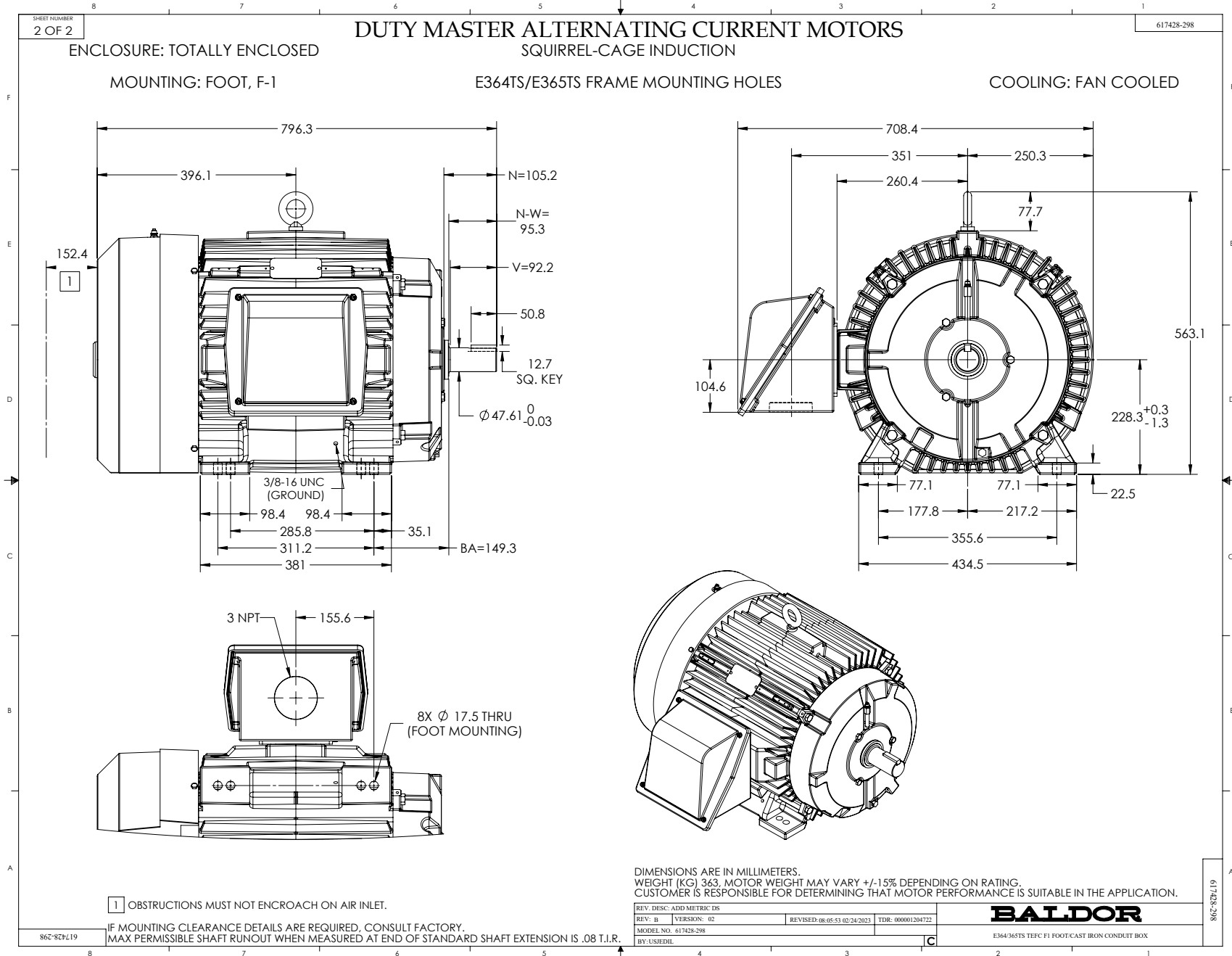
AMPERES SHOWN FOR 460 VOLT CONNECTION, IF OTHER VOLTAGE CONNECTIONS ARE AVAILABLE, THE AMPERES WILL VARY INVERSELY WITH THE RATED VOLTAGE.



DR. BY W. L. SMITH
CK. BY G. R. WEBB
APP. BY E.J. CHRISTIAN
DATE 03/11/02

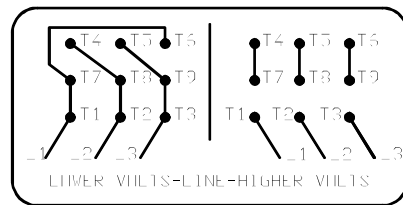
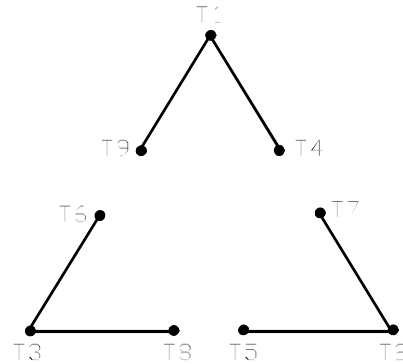
**A-C MOTOR
PERFORMANCE CURVES** A36WG1558-R007
ISSUE DATE 08/30/19 Page 8 of 11





416820-002

A-C MOTOR
CONNECTION DIAGRAM
STANDARD 9 LEAD DELTA-CONNECTED



(N.P. 1575-B)

416820-002

REV. DESC: FONT CHANGE FOR PDF SEARCHABLE		
REV. LTR: A	VERSION: 01	TDR: 000001009382
FILE: \MGA\00000\661	REVISED: 02:46:19 02/13/2020	BY: MGHMTT
MTL: -	© □	

BALDOR - RELIANCE®

CONN DIAG - STANDARD 9 LEAD, DELTA-CONNECTED

SH 1 of 1