

BALDOR® • RELIANCE®

Customer information packet

EWDM3709T

7.5HP, 3500RPM, 3PH, 60HZ, 213T, TEFC, F1

Class - None

Division - Not Applicable

Copyright © All product information within this document is subject to ABB Motors and Mechanical Inc. copyright © protection, unless otherwise noted.

9/9/2024 7:42:45 AM

Specifications

Enclosure	TEFC
Frame	213T
Frame Material	Steel
Frequency	60.00 Hz
Haz Area Class and Group	None
Haz Area Division	Not Applicable
Motor Letter Type	Three Phase
Output @ Frequency	7.500 HP @ 60 HZ
Phase	3
Synchronous Speed @ Frequency	3600 RPM @ 60 HZ
Voltage @ Frequency	230.0 V @ 60 HZ 460.0 V @ 60 HZ
Agency Approvals	CSA CSA EEV NEMA PREMIUM UR
Ambient Temperature	40 °C
Auxillary Box	No Auxillary Box
Auxillary Box Lead Termination	None
Base Indicator	Rigid
Bearing Grease Type	Polyrex EM (-20F +300F)
Blower	None
Current @ Voltage	18.000 A @ 230.0 V 9.000 A @ 460.0 V
Design Code	A
Drip Cover	No Drip Cover
Duty Rating	CONT
Efficiency @ 100% Load	89.5 %
Electrically Isolated Bearing	Not Electrically Isolated
Feedback Device	NO FEEDBACK
Heater Indicator	No Heater
High Voltage Full Load Amps	9.0 a

Part detail

Revision	E
Type	AC
Mech. spec.	
Base	
Status	PRD/A
Elec. spec.	37WGY751
Layout	37LYE572
Eff. date	02-14-2024
CD Diagram	CD0005
Poles	02
Leads	9#14
Proprietary	False
Created date	12-05-2019

Insulation Class	F
Inverter Code	Inverter Duty
KVA Code	K
Lifting Lugs	Standard Lifting Lugs
Locked Bearing Indicator	No Locked Bearing
Motor Lead Termination	Flying Leads
Motor Standards	NEMA
Motor Type	3738M
Mounting Arrangement	F1
Number of Poles	2
Overall Length	17.89 IN
Power Factor	88
Product Family	Wash Down
Pulley Face Code	Standard
Rodent Screen	None
Service Factor	1.15
Shaft Diameter	1.375 IN
Shaft Ground Indicator	No Shaft Grounding
Shaft Rotation	Reversible
Speed	3500 rpm
Speed Code	Single Speed
Starting Method	Direct on line
Thermal Device - Bearing	None
Thermal Device - Winding	None
Vibration Sensor Indicator	No Vibration Sensor
Winding Thermal 1	None
Winding Thermal 2	None

Nameplate

NP1669L									
CAT.NO.	EWDM3709T								
SPEC.	37-0000-0180								
HP	7.5								
VOLTS	230/460								
AMP	18/9								
RPM	3500								
FRAME	213T		HZ	60		PH	3		
SER.F.	1.15	CODE	K	DES	A	CLASS	F		
NEMA-NOM-EFF	89.5	PF	88						
RATING	40C AMB-CONT								
CC	010A								
DE	6307		ODE	6206					
ENCL	TEFC	SN							
BLANK	20:1 CT, 20:1 VT, 1.00SF								

AC Induction Motor Performance Data

Record # 85668

Typical performance - not guaranteed values

Winding: 35WGM530-R023		Type: 3516M	Enclosure: TEFC	
Nameplate Data			380 V, 50 Hz: Single Voltage Motor	
Rated Output (HP)	.33	Full Load Torque	1.17 LB-FT	
Volts	380	Start Configuration	direct on line	
Full Load Amps	.7	Breakdown Torque	6.31 LB-FT	
R.P.M.	1460	Pull-up Torque	3.19 LB-FT	
Hz	50 Phase	3	Locked-rotor Torque	3.94 LB-FT
NEMA Design Code	B KVA Code	M	Starting Current	5.56 A
Service Factor (S.F.)	1.15	No-load Current	0.479 A	
NEMA Nom. Eff.	78.5 Power Factor	68	Line-line Res. @ 25°C	33.6 Ω
Rating - Duty	40C AMB-CONT		Temp. Rise @ Rated Load	
			Locked-rotor Power Factor	66
			Rotor inertia	0.0946 lb-ft ²

Load Characteristics 380 V, 50 Hz, 0.33 HP

% of Rated Load	25	50	75	100	125	150	S.F.
Power Factor	28	44	57	67	74	79	71
Efficiency	66.9	78.3	81.5	82.7	82.3	81.9	82.5
Speed	1493	1485	1477	1468	1459	1449	1463
Line amperes	0.497	0.542	0.598	0.666	0.76	0.86	0.722

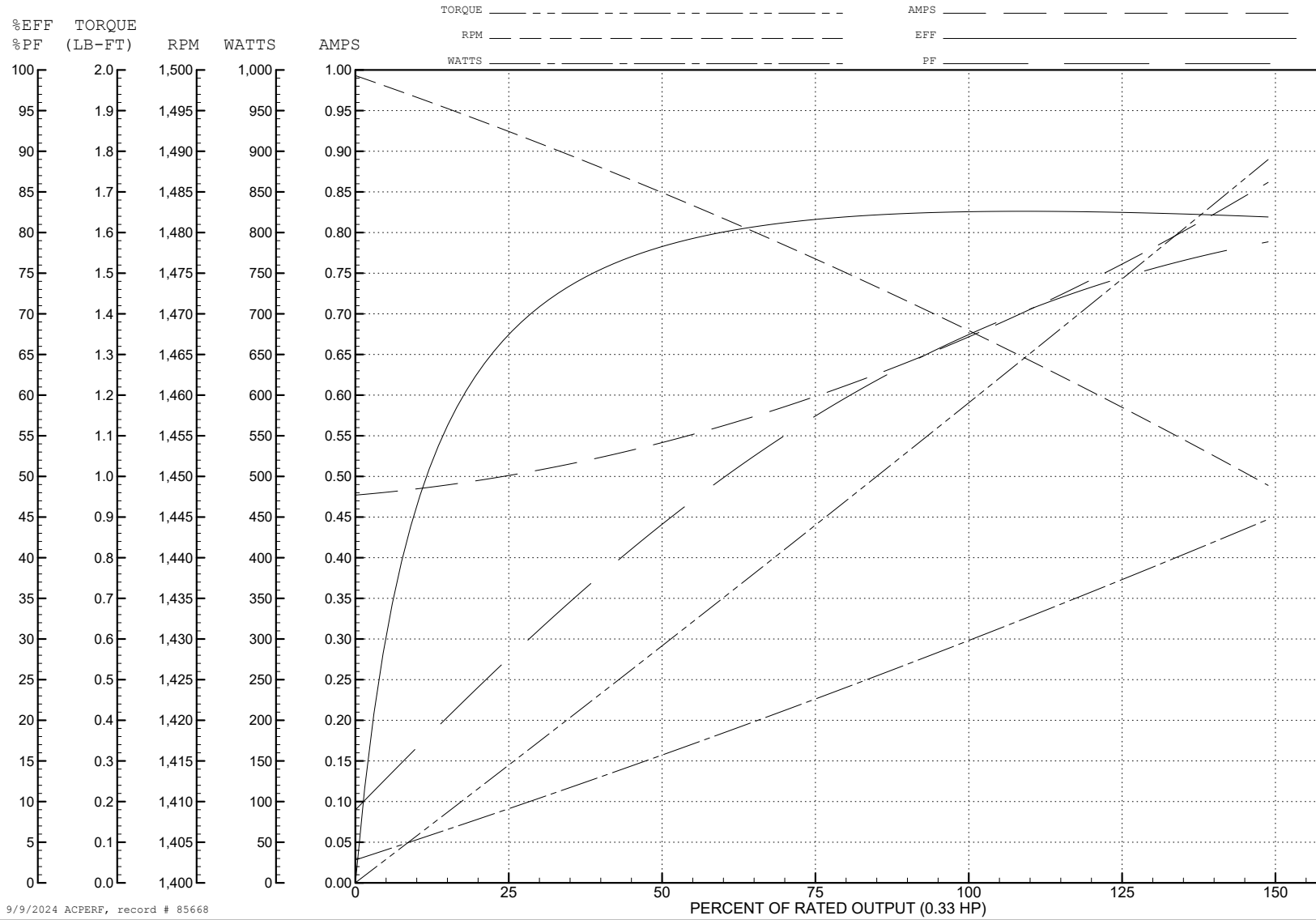
ABB Motors and Mechanical Inc.

WINDING # 35WGM530

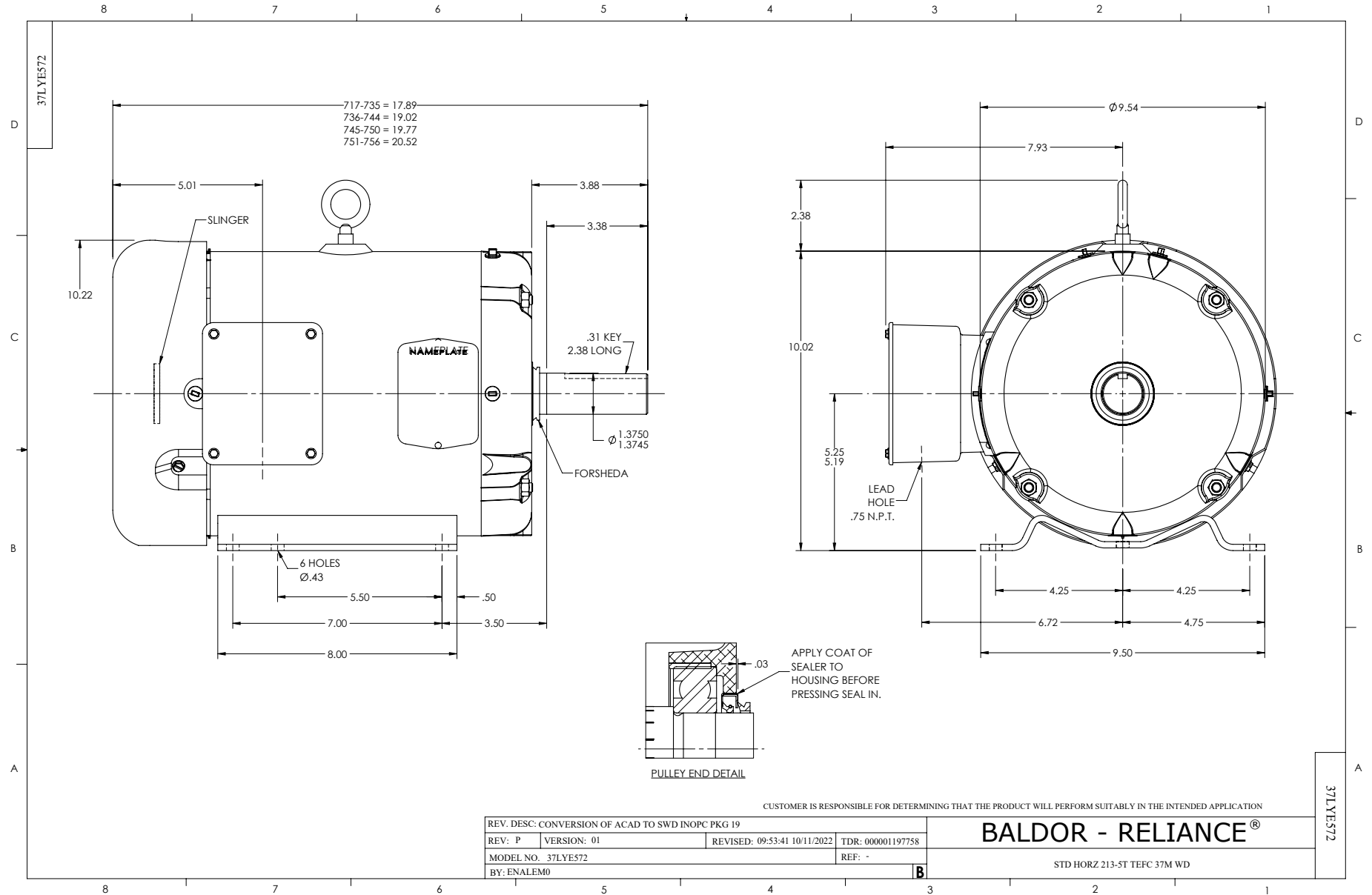
0.33 HP 3 PH 50 HZ 1460 RPM 380 V 3516M

Typical performance - not guaranteed values.

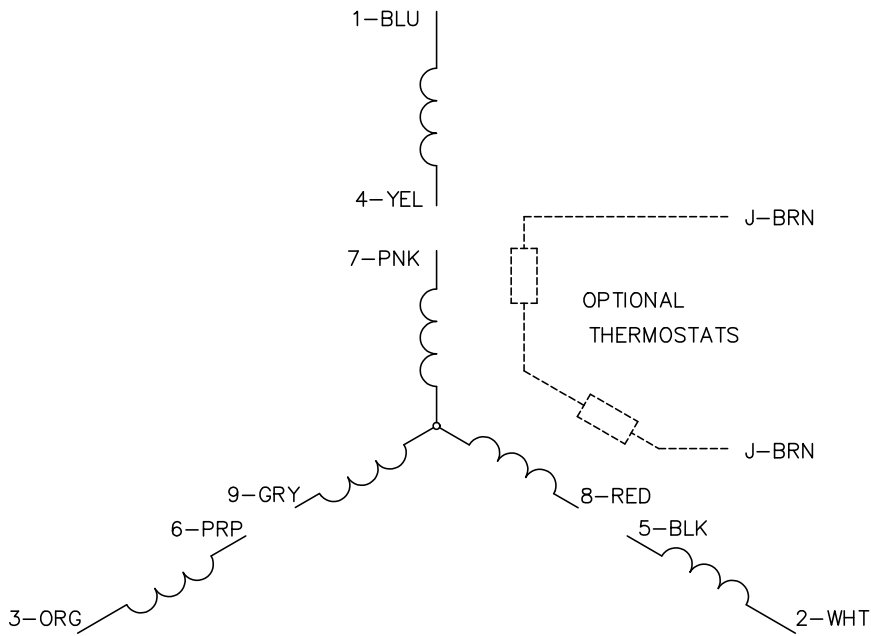
TORQUES (LB-FT): PO=6.31 PU=3.19 LR=3.94 LRA=5.56



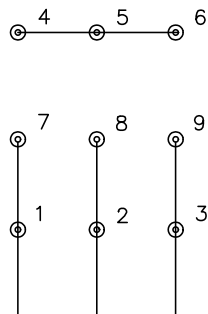
9/9/2024 ACPERF, record # 85668



CD0005

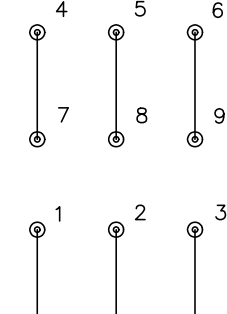


LOW VOLTAGE
(2Y)



LINE

HIGH VOLTAGE
(1Y)



LINE

NOTES:

1. INTERCHANGE ANY TWO LINE LEADS TO REVERSE ROTATION.
2. OPTIONAL THERMOSTATS ARE PROVIDED WHEN SPECIFIED.
3. ACTUAL NUMBER OF INTERNAL PARALLEL CIRCUITS MAY BE A MULTIPLE OF THOSE SHOWN ABOVE.
4. LEAD COLORS ARE OPTIONAL. LEADS MUST ALWAYS BE NUMBERED AS SHOWN.

CD0005

REV. DESC: REVISE TO SHOW OPTIONAL COLORS			
REV. LTR: E	BY: JLP	REVISED: 01/19/99 10:15	TDR: 0171435
S00000		FILE: AAA00005140	MDL: -
		MTL: -	

BALDOR ELECTRIC Co.

3PH, DV, 9 LEADS