

BALDOR® • RELIANCE™

Customer information packet

EWDM3607T

1.5HP, 1165RPM, 3PH, 60HZ, 182T, TEFC, F1

Part detail

Revision	A
Type	AC
Mech. spec.	
Base	
Status	PRD/A
Elec. spec.	36WGS916
Layout	36LYK186
Eff. date	09-29-2020
CD Diagram	CD0005
Poles	06
Leads	9#16
Proprietary	False
Created date	01-06-2020

Nameplate

NP1669L									
CAT.NO.	EWDM3607T								
SPEC.	36-0000-0263								
HP	1.5								
VOLTS	230/460								
AMP	4.8/2.4								
RPM	1165								
FRAME	182T		HZ	60		PH	3		
SER.F.	1.15	CODE	K	DES	B	CLASS	F		
NEMA-NOM-EFF	87.5	PF	67						
RATING	40C AMB-CONT								
CC	010A		USABLE AT 208V				N/A		
DE	6206		ODE	6205					
ENCL	TEFC	SN							
BLANK	20:1CT, 20:1VT, 1.00SF								

AC Induction Motor Performance Data

Record # 49238

Typical performance - not guaranteed values

Winding: 36WGS916-R017		Type: 3632M	Enclosure: TEFC	
Nameplate Data		460 V, 60 Hz: High Voltage Connection		
Rated Output (HP)	1.5	Full Load Torque	6.85 LB-FT	
Volts	230/460	Start Configuration	direct on line	
Full Load Amps	4.8/2.4	Breakdown Torque	23.8 LB-FT	
R.P.M.	1165	Pull-up Torque	12.5 LB-FT	
Hz	60 Phase	3	Locked-rotor Torque	15.3 LB-FT
NEMA Design Code	B KVA Code	K	Starting Current	15.8 A
Service Factor (S.F.)		1.15	No-load Current	1.47 A
NEMA Nom. Eff.	87.5 Power Factor	67	Line-line Res. @ 25°C	7.12 Ω
Rating - Duty		40C AMB-CONT	Temp. Rise @ Rated Load	34°C
S.F. Amps			Temp. Rise @ S.F. Load	40°C
			Locked-rotor Power Factor	30.1
			Rotor inertia	0.301 LB-FT ²

Load Characteristics 460 V, 60 Hz, 1.5 HP

% of Rated Load	25	50	75	100	125	150	S.F.
Power Factor	30	48	59	67	71	74	69
Efficiency	79.3	86.1	87.8	87.5	86.6	85.5	87
Speed	1192	1185	1177	1168	1158	1148	1162
Line amperes	1.57	1.77	2.07	2.42	2.88	3.36	2.7

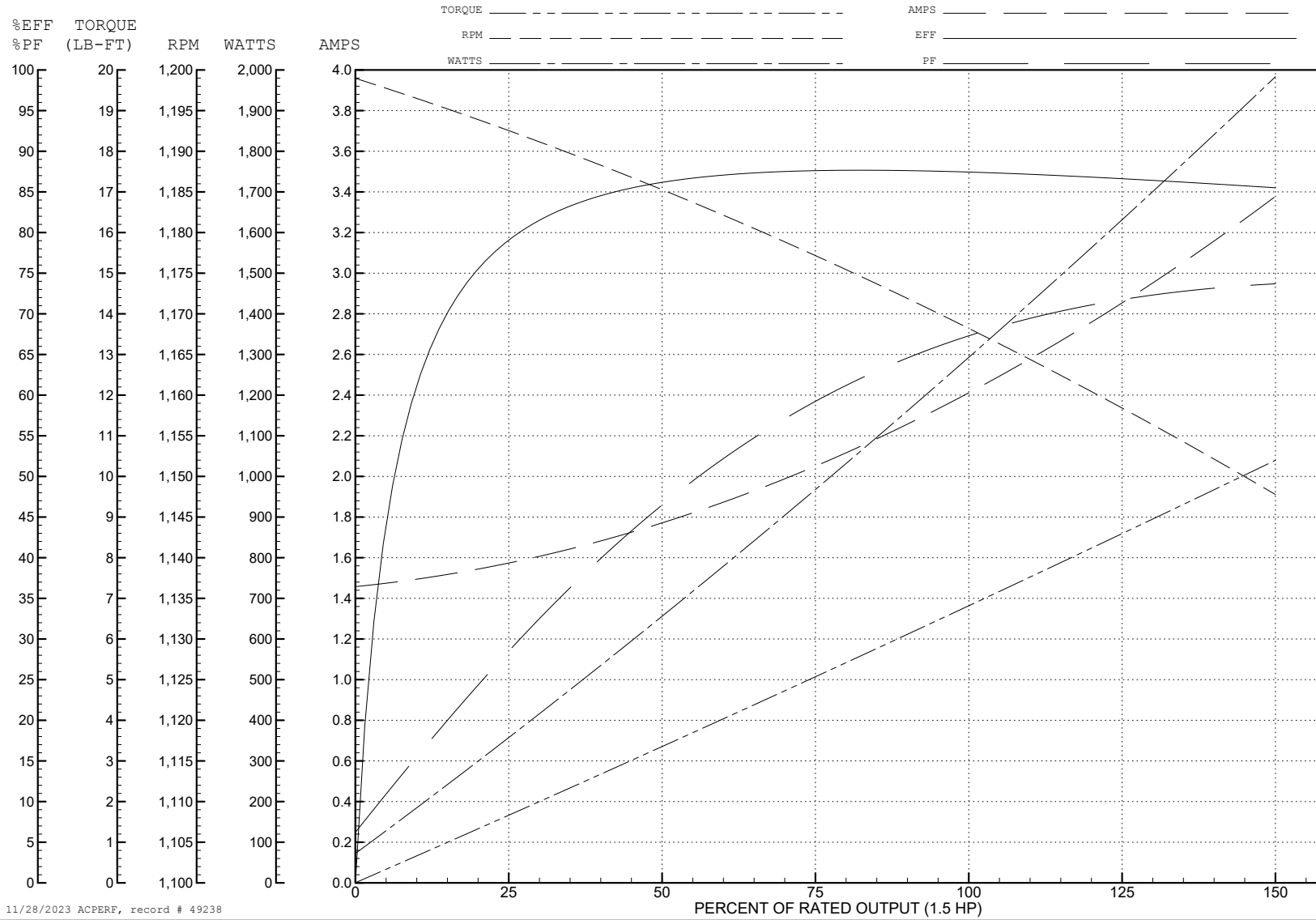
ABB Motors and Mechanical Inc.

WINDING # 36WGS916

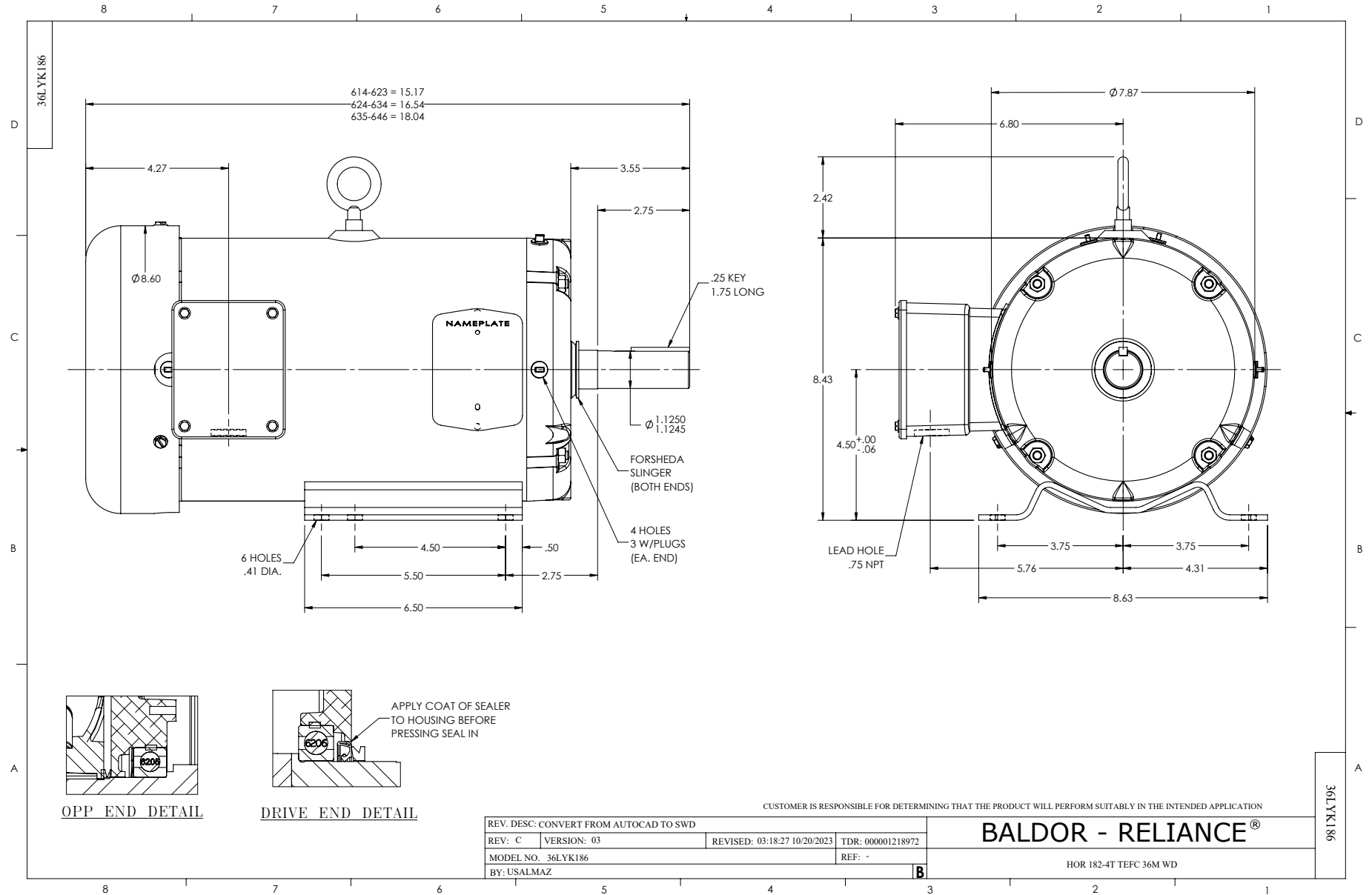
Typical performance - not guaranteed values.

1.5 HP 3 PH 60 HZ 1165 RPM 460 V 3632M

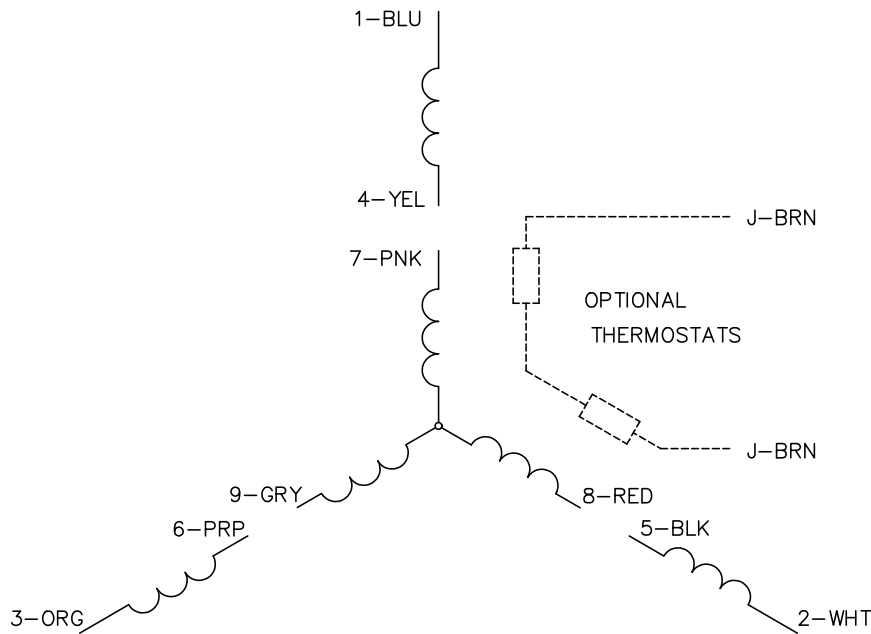
TORQUES (LB-FT): PO=23.8 PU=12.5 LR=15.3 LRA=15.8



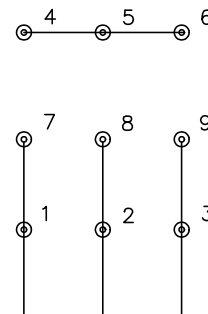
11/28/2023 ACPERF, record # 49238



CD0005

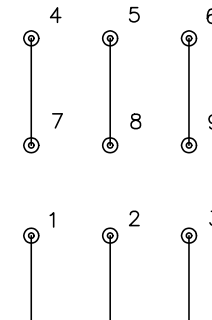


LOW VOLTAGE
(2Y)



LINE

HIGH VOLTAGE
(1Y)



LINE

NOTES:

1. INTERCHANGE ANY TWO LINE LEADS TO REVERSE ROTATION.
2. OPTIONAL THERMOSTATS ARE PROVIDED WHEN SPECIFIED.
3. ACTUAL NUMBER OF INTERNAL PARALLEL CIRCUITS MAY BE A MULTIPLE OF THOSE SHOWN ABOVE.
4. LEAD COLORS ARE OPTIONAL. LEADS MUST ALWAYS BE NUMBERED AS SHOWN.

REV. DESC: REVISE TO SHOW OPTIONAL COLORS			
REV. LTR: E	BY: JLP	REVISED: 01/19/99 10:15	TDR: 0171435
S00000		FILE: AAA00005140	MDL: -
		MTL: -	

BALDOR ELECTRIC Co.

3PH, DV, 9 LEADS

CD0005