

BALDOR • RELIANCE

Customer information packet

EWDM3555T

2HP, 3450RPM, 3PH, 60HZ, 145T, TEFC, F1

Class - None

Division - Not Applicable

Copyright © All product information within this document is subject to ABB Motors and Mechanical Inc. copyright © protection, unless otherwise noted.

1/18/2025 8:36:41 PM

Specifications

| | |
|--------------------------------|--|
| Enclosure | TEFC |
| Frame | 145T |
| Frame Material | Steel |
| Frequency | 60.00 Hz |
| Haz Area Class and Group | None |
| Haz Area Division | Not Applicable |
| Motor Letter Type | Three Phase |
| Output @ Frequency | 2.000 HP @ 60 HZ |
| Phase | 3 |
| Synchronous Speed @ Frequency | 3600 RPM @ 60 HZ |
| Voltage @ Frequency | 230.0 V @ 60 HZ 460.0 V @ 60 HZ |
| Agency Approvals | CSA CSA EEV NEMA PREMIUM UR |
| Ambient Temperature | 40 °C |
| Auxillary Box | No Auxillary Box |
| Auxillary Box Lead Termination | None |
| Base Indicator | Rigid |
| Bearing Grease Type | Polyrex EM (-20F +300F) |
| Blower | None |
| Current @ Voltage | 2.500 A @ 460.0 V 5.000 A @ 230.0 V |
| Design Code | B |
| Drip Cover | No Drip Cover |
| Duty Rating | CONT |
| Efficiency @ 100% Load | 86.5 % |
| Electrically Isolated Bearing | Not Electrically Isolated |
| Feedback Device | NO FEEDBACK |
| Heater Indicator | No Heater |
| High Voltage Full Load Amps | 2.5 a |

Part detail

| | |
|--------------|------------|
| Revision | C |
| Type | AC |
| Mech. spec. | |
| Base | |
| Status | PRD/A |
| Elec. spec. | 35WGS811 |
| Layout | 35LYS585 |
| Eff. date | 02-14-2024 |
| CD Diagram | CD0005 |
| Poles | 02 |
| Leads | 9#18 |
| Proprietary | False |
| Created date | 12-10-2019 |

| | |
|-----------------------------------|---------------------|
| Insulation Class | F |
| Inverter Code | Inverter Ready |
| KVA Code | N |
| Lifting Lugs | No Lifting Lugs |
| Locked Bearing Indicator | No Locked Bearing |
| Motor Lead Termination | Flying Leads |
| Motor Standards | NEMA |
| Motor Type | 3532M |
| Mounting Arrangement | F1 |
| Number of Poles | 2 |
| Overall Length | 14.17 IN |
| Power Factor | 85 |
| Product Family | Wash Down |
| Pulley Face Code | Standard |
| Rodent Screen | None |
| Service Factor | 1.15 |
| Shaft Diameter | 0.875 IN |
| Shaft Ground Indicator | No Shaft Grounding |
| Shaft Rotation | Reversible |
| Speed | 3450 rpm |
| Speed Code | Single Speed |
| Starting Method | Direct on line |
| Thermal Device - Bearing | None |
| Thermal Device - Winding | None |
| Vibration Sensor Indicator | No Vibration Sensor |
| Winding Thermal 1 | None |
| Winding Thermal 2 | None |

Nameplate

| NP1669L | | | | | | | | | |
|---------------------|------------------------|-------------|------------|------------|---|--------------|---|--|--|
| CAT.NO. | EWDM3555T | | | | | | | | |
| SPEC. | 35-0000-0479 | | | | | | | | |
| HP | 2 | | | | | | | | |
| VOLTS | 230/460 | | | | | | | | |
| AMP | 5/2.5 | | | | | | | | |
| RPM | 3450 | | | | | | | | |
| FRAME | 145T | | HZ | 60 | | PH | 3 | | |
| SER.F. | 1.15 | CODE | N | DES | B | CLASS | F | | |
| NEMA-NOM-EFF | 86.5 | PF | 85 | | | | | | |
| RATING | 40C AMB-CONT | | | | | | | | |
| CC | 010A | | | | | | | | |
| DE | 6205 | | ODE | 6203 | | | | | |
| ENCL | TEFC | SN | | | | | | | |
| BLANK | 20:1CT, 20:1VT, 1.00SF | | | | | | | | |

AC Induction Motor Performance Data

Record # 50683

Typical performance - not guaranteed values

| Winding: 35WGS811-R018 | | Type: 3532M | Enclosure: TEFC | |
|------------------------|-------------------|---------------------------|--|--|
| Nameplate Data | | | 460 V, 60 Hz: High Voltage Connection | |
| Rated Output (HP) | 2 | Full Load Torque | 3 LB-FT | |
| Volts | 230/460 | Start Configuration | direct on line | |
| Full Load Amps | 5/2.5 | Breakdown Torque | 16 LB-FT | |
| R.P.M. | 3450 | Pull-up Torque | 12.5 LB-FT | |
| Hz | 60 Phase | Locked-rotor Torque | 16 LB-FT | |
| NEMA Design Code | B KVA Code | Starting Current | 30 A | |
| Service Factor (S.F.) | 1.15 | No-load Current | 1.1 A | |
| NEMA Nom. Eff. | 86.5 Power Factor | Line-line Res. @ 25°C | 5.4 Ω | |
| Rating - Duty | 40C AMB-CONT | Temp. Rise @ Rated Load | 35°C | |
| S.F. Amps | | Temp. Rise @ S.F. Load | 44°C | |
| | | Locked-rotor Power Factor | 45 | |
| | | Rotor inertia | 0.0885 LB-FT ² | |

Load Characteristics 460 V, 60 Hz, 2 HP

| % of Rated Load | 25 | 50 | 75 | 100 | 125 | 150 | S.F. |
|-----------------|------|------|------|------|------|------|------|
| Power Factor | 50 | 70 | 80 | 85 | 88 | 89 | 87 |
| Efficiency | 75.2 | 83.8 | 86.2 | 86.5 | 86.4 | 85.5 | 86.5 |
| Speed | 3571 | 3548 | 3525 | 3501 | 3476 | 3448 | 3486 |
| Line amperes | 1.28 | 1.65 | 2.09 | 2.55 | 3.08 | 3.64 | 2.9 |

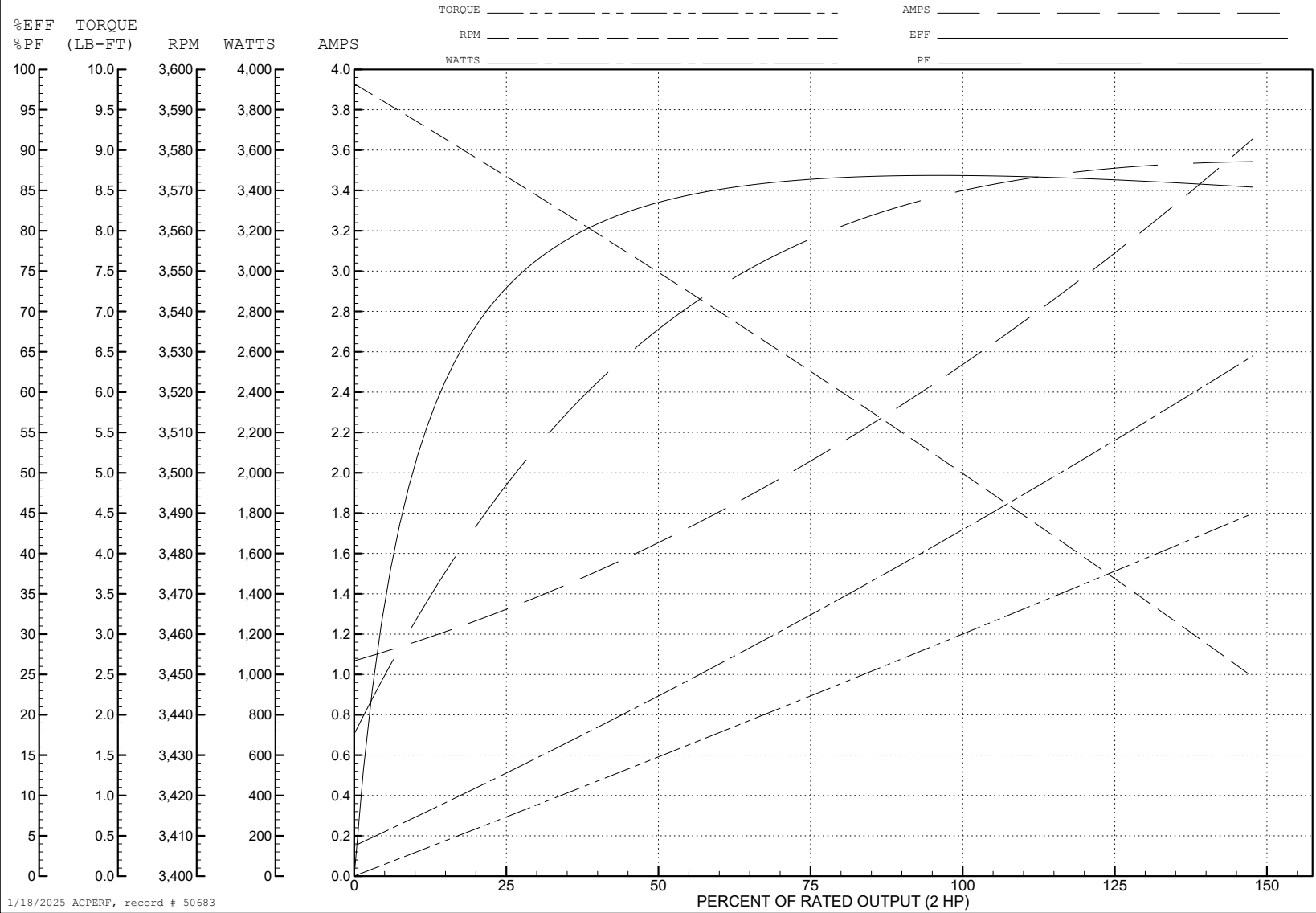
ABB Motors and Mechanical Inc.

WINDING # 35WGS811

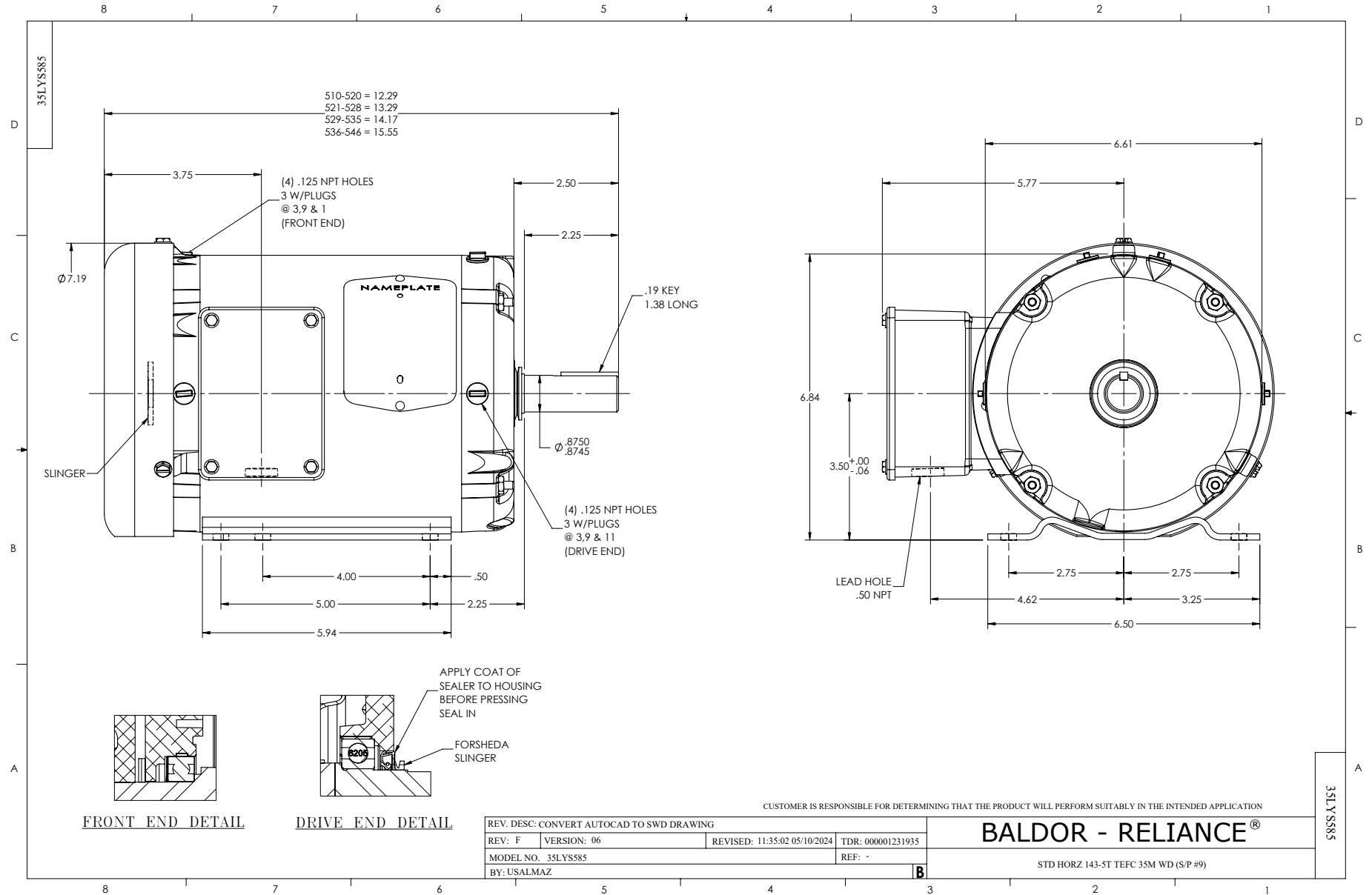
Typical performance - not guaranteed values.

2 HP 3 PH 60 HZ 3450 RPM 460 V 3532M

TORQUES (LB-FT): PO=16 PU=12.5 LR=16 LRA=30



1/18/2025 ACPERF, record # 50683



CD0005



LOW VOLTAGE
(2Y)



LINE

HIGH VOLTAGE
(1Y)



LINE

NOTES:

1. INTERCHANGE ANY TWO LINE LEADS TO REVERSE ROTATION.
2. OPTIONAL THERMOSTATS ARE PROVIDED WHEN SPECIFIED.
3. ACTUAL NUMBER OF INTERNAL PARALLEL CIRCUITS MAY BE A MULTIPLE OF THOSE SHOWN ABOVE.
4. LEAD COLORS ARE OPTIONAL. LEADS MUST ALWAYS BE NUMBERED AS SHOWN.

CD0005

| | | | |
|---|---------|-------------------------|--------------|
| REV. DESC: REVISE TO SHOW OPTIONAL COLORS | | | |
| REV. LTR: E | BY: JLP | REVISED: 01/19/99 10:15 | TDR: 0171435 |
| S00000 | | FILE: AAA00005140 | MDL: - |
| | | MTL: - | |

BALDOR ELECTRIC Co.

3PH, DV, 9 LEADS