

BALDOR • RELIANCE

Customer information packet

EWDM3550T

1.5HP, 3500RPM, 3PH, 60HZ, 143T, TENV, F1

Class - None

Division - Not Applicable

Specifications

Enclosure	TENV
Frame	143T
Frame Material	Steel
Frequency	60.00 Hz
Haz Area Class and Group	None
Haz Area Division	Not Applicable
Motor Letter Type	Three Phase
Output @ Frequency	1.500 HP @ 60 HZ
Phase	3
Synchronous Speed @ Frequency	3600 RPM @ 60 HZ
Voltage @ Frequency	230.0 V @ 60 HZ 460.0 V @ 60 HZ
Agency Approvals	CSA CSA EEV NEMA PREMIUM UR
Ambient Temperature	40 °C
Auxillary Box	No Auxillary Box
Auxillary Box Lead Termination	None
Base Indicator	Rigid
Bearing Grease Type	Polyrex EM (-20F +300F)
Blower	None
Current @ Voltage	2.000 A @ 460.0 V 4.000 A @ 230.0 V
Design Code	B
Drip Cover	No Drip Cover
Duty Rating	CONT
Efficiency @ 100% Load	85.5 %
Electrically Isolated Bearing	Not Electrically Isolated
Feedback Device	NO FEEDBACK
Heater Indicator	No Heater
High Voltage Full Load Amps	2.0 a

Part detail

Revision	C
Type	AC
Mech. spec.	
Base	
Status	PRD/A
Elec. spec.	35WGR445
Layout	35LYS584
Eff. date	02-14-2024
CD Diagram	CD0005
Poles	02
Leads	9#18
Proprietary	False
Created date	12-06-2019

Insulation Class	F
Inverter Code	Inverter Ready
KVA Code	N
Lifting Lugs	No Lifting Lugs
Locked Bearing Indicator	No Locked Bearing
Motor Lead Termination	Flying Leads
Motor Standards	NEMA
Motor Type	3528M
Mounting Arrangement	F1
Number of Poles	2
Overall Length	12.12 IN
Power Factor	87
Product Family	Wash Down
Pulley Face Code	Standard
Rodent Screen	None
Service Factor	1.15
Shaft Diameter	0.875 IN
Shaft Ground Indicator	No Shaft Grounding
Shaft Rotation	Reversible
Speed	3500 rpm
Speed Code	Single Speed
Starting Method	Direct on line
Thermal Device - Bearing	None
Thermal Device - Winding	None
Vibration Sensor Indicator	No Vibration Sensor
Winding Thermal 1	None
Winding Thermal 2	None

Nameplate

NP1669L									
CAT.NO.	EWDM3550T								
SPEC.	35-0000-0476								
HP	1.5								
VOLTS	230/460								
AMP	4/2								
RPM	3500								
FRAME	143T		HZ	60		PH	3		
SER.F.	1.15	CODE	N	DES	B	CLASS	F		
NEMA-NOM-EFF	85.5	PF	87						
RATING	40C AMB-CONT								
CC	010A								
DE	6205		ODE	6203					
ENCL	TENV	SN							
BLANK	20:1CT, 20:1VT, 1.00SF								

AC Induction Motor Performance Data

Record # 67482

Typical performance - not guaranteed values

Winding: 35WGR445-R020		Type: 3528M	Enclosure: TENV	
Nameplate Data			460 V, 60 Hz: High Voltage Connection	
Rated Output (HP)	1.5	Full Load Torque	2.3 LB-FT	
Volts	230/460	Start Configuration	direct on line	
Full Load Amps	4/2	Breakdown Torque	12 LB-FT	
R.P.M.	3500	Pull-up Torque	8.2 LB-FT	
Hz	60 Phase	3	Locked-rotor Torque	11 LB-FT
NEMA Design Code	B KVA Code	N	Starting Current	23.5 A
Service Factor (S.F.)	1.15	No-load Current	0.9 A	
NEMA Nom. Eff.	85.5 Power Factor	87	Line-line Res. @ 25°C	6.95 Ω
Rating - Duty	40C AMB-CONT	Temp. Rise @ Rated Load	73°C	
S.F. Amps		Temp. Rise @ S.F. Load	84°C	
		Locked-rotor Power Factor	48.4	

Load Characteristics 460 V, 60 Hz, 1.5 HP

% of Rated Load	25	50	75	100	125	150	S.F.
Power Factor	51	71	81	87	90	91	89
Efficiency	73.8	82.5	85.2	86.1	86	85.4	86
Speed	3568	3544	3519	3493	3466	3434	3477
Line amperes	1.1	1.3	1.6	1.9	2.3	2.8	2.14

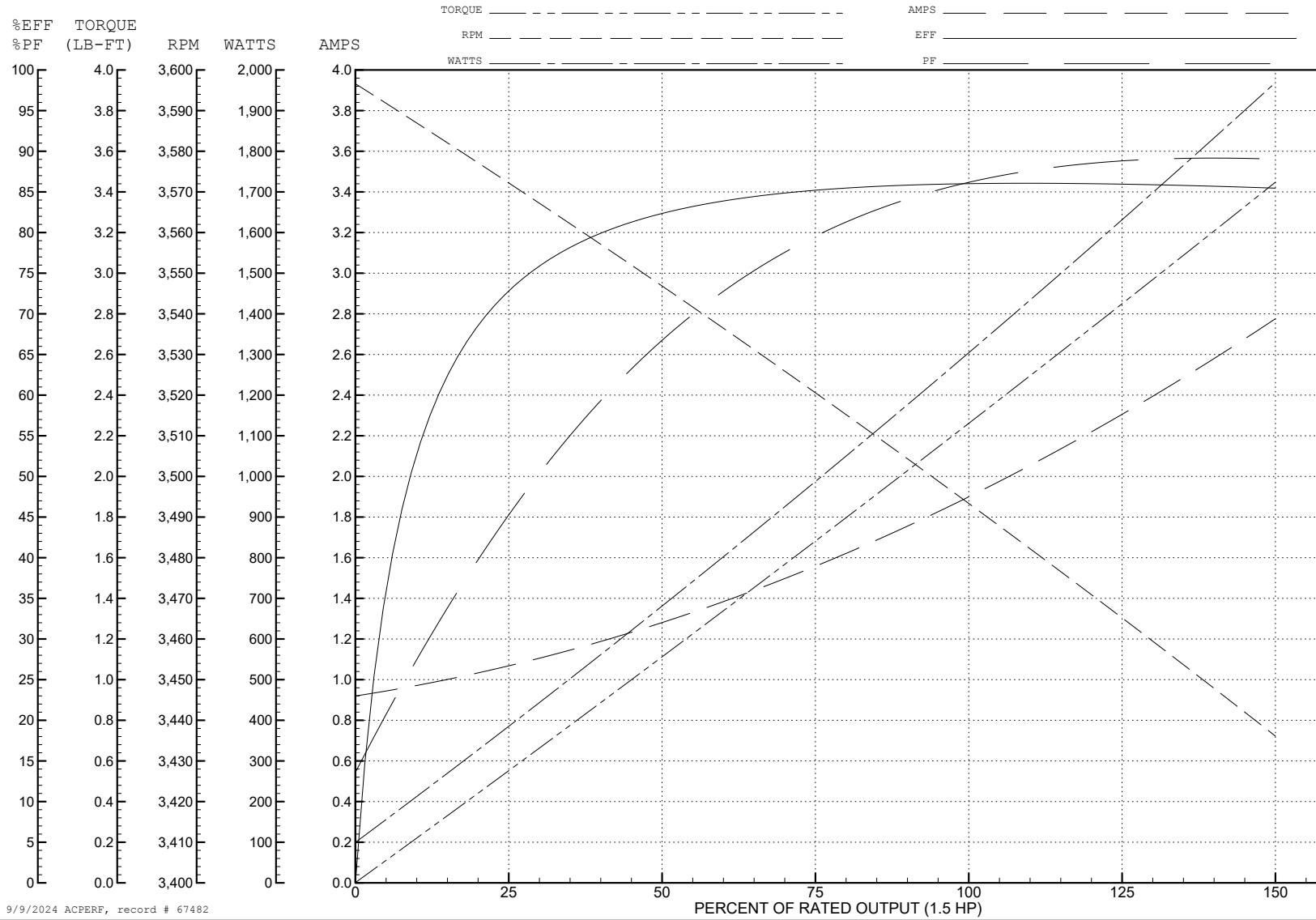
ABB Motors and Mechanical Inc.

WINDING # 35WGR445

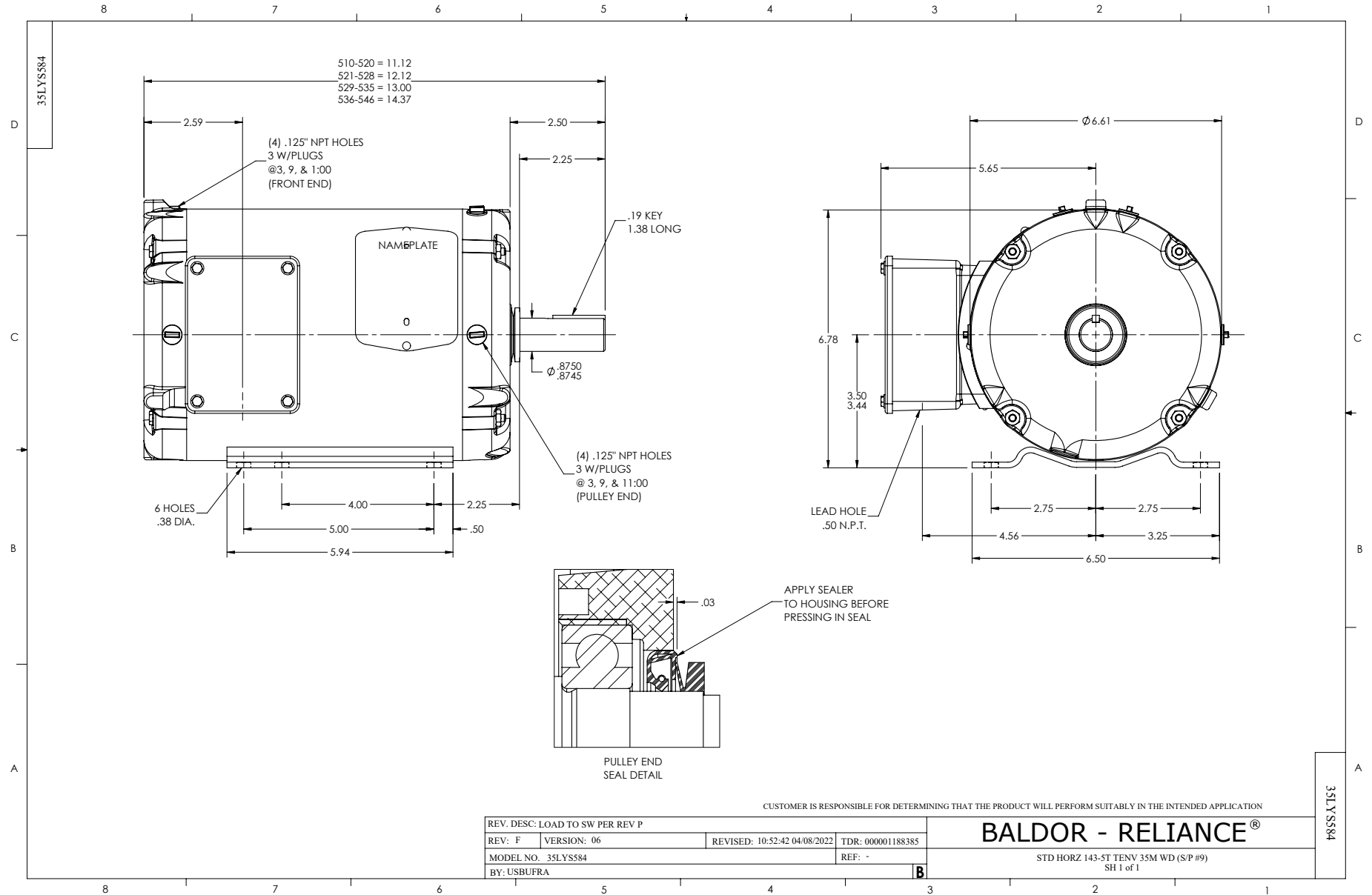
Typical performance - not guaranteed values.

1.5 HP 3 PH 60 HZ 3500 RPM 460 V 3528M

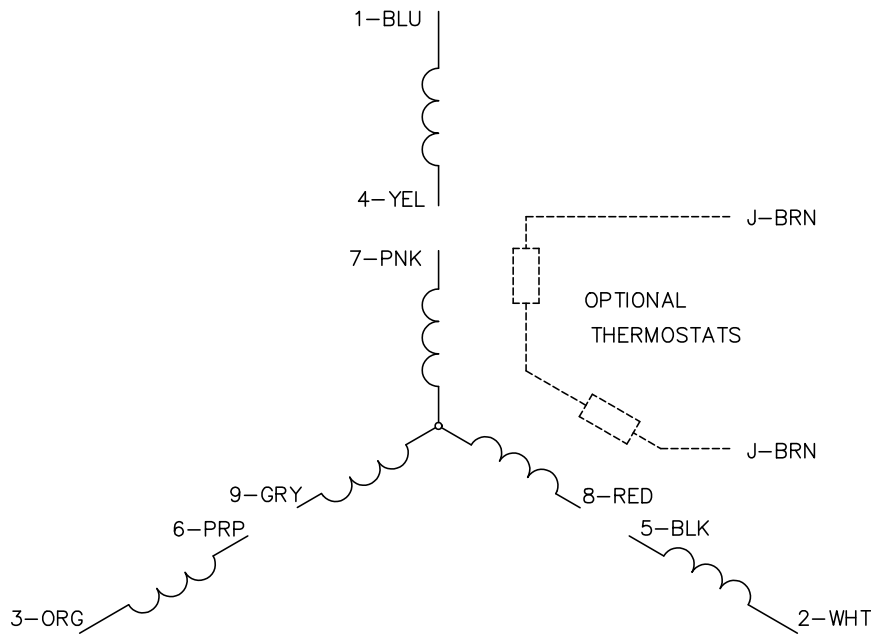
TORQUES (LB-FT): PO=12 PU=8.2 LR=11 LRA=23.5



9/9/2024 ACPERF, record # 67482



CD0005

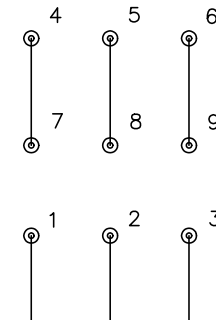


LOW VOLTAGE
(2Y)



LINE

HIGH VOLTAGE
(1Y)



LINE

NOTES:

1. INTERCHANGE ANY TWO LINE LEADS TO REVERSE ROTATION.
2. OPTIONAL THERMOSTATS ARE PROVIDED WHEN SPECIFIED.
3. ACTUAL NUMBER OF INTERNAL PARALLEL CIRCUITS MAY BE A MULTIPLE OF THOSE SHOWN ABOVE.
4. LEAD COLORS ARE OPTIONAL. LEADS MUST ALWAYS BE NUMBERED AS SHOWN.

CD0005

REV. DESC: REVISE TO SHOW OPTIONAL COLORS			
REV. LTR: E	BY: JLP	REVISED: 01/19/99 10:15	TDR: 0171435
S00000		FILE: AAA00005140	MDL: -
		MTL: -	

BALDOR ELECTRIC Co.

3PH, DV, 9 LEADS