

BALDOR • RELIANCE

Customer information packet

EWDM23994T

15HP, 3450RPM, 3PH, 60HZ, 254T, TEFC, F1

Class - None

Division - Not Applicable

Specifications

| | |
|--------------------------------|--|
| Enclosure | TEFC |
| Frame | 254T |
| Frame Material | Steel |
| Frequency | 60.00 Hz |
| Haz Area Class and Group | None |
| Haz Area Division | Not Applicable |
| Motor Letter Type | Three Phase |
| Output @ Frequency | 15.000 HP @ 60 HZ |
| Phase | 3 |
| Synchronous Speed @ Frequency | 3600 RPM @ 60 HZ |
| Voltage @ Frequency | 230.0 V @ 60 HZ 460.0 V @ 60 HZ |
| Agency Approvals | CSA CSA EEV NEMA PREMIUM UR |
| Ambient Temperature | 40 °C |
| Auxillary Box | No Auxillary Box |
| Auxillary Box Lead Termination | None |
| Base Indicator | Rigid |
| Bearing Grease Type | Polyrex EM (-20F +300F) |
| Blower | None |
| Current @ Voltage | 15.300 A @ 460.0 V 30.600 A @ 230.0 V |
| Design Code | A |
| Drip Cover | No Drip Cover |
| Duty Rating | CONT |
| Efficiency @ 100% Load | 91.0 % |
| Electrically Isolated Bearing | Not Electrically Isolated |
| Feedback Device | NO FEEDBACK |
| Heater Indicator | No Heater |
| High Voltage Full Load Amps | 15.3 a |

Part detail

| | |
|--------------|--------------|
| Revision | D |
| Type | AC |
| Mech. spec. | |
| Base | |
| Status | PRD/A |
| Elec. spec. | 37WGL723 |
| Layout | 37LY-000-114 |
| Eff. date | 02-14-2024 |
| CD Diagram | CD0005 |
| Poles | 02 |
| Leads | 9#12 |
| Proprietary | False |
| Created date | 01-21-2020 |

| | |
|-----------------------------------|-----------------------|
| Insulation Class | F |
| Inverter Code | Inverter Ready |
| KVA Code | G |
| Lifting Lugs | Standard Lifting Lugs |
| Locked Bearing Indicator | No Locked Bearing |
| Motor Lead Termination | Flying Leads |
| Motor Standards | NEMA |
| Motor Type | 3756M |
| Mounting Arrangement | F1 |
| Number of Poles | 2 |
| Overall Length | 22.32 IN |
| Power Factor | 98 |
| Product Family | Wash Down |
| Pulley Face Code | Standard |
| Rodent Screen | None |
| Service Factor | 1.15 |
| Shaft Diameter | 1.625 IN |
| Shaft Ground Indicator | No Shaft Grounding |
| Shaft Rotation | Reversible |
| Speed | 3450 rpm |
| Speed Code | Single Speed |
| Starting Method | Direct on line |
| Thermal Device - Bearing | None |
| Thermal Device - Winding | None |
| Vibration Sensor Indicator | No Vibration Sensor |
| Winding Thermal 1 | None |
| Winding Thermal 2 | None |

Nameplate

| NP1669L | | | | | | | | | |
|---------------------|-------------------------|-------------|------------|------------|---|--------------|---|--|--|
| CAT.NO. | EWDM23994T | | | | | | | | |
| SPEC. | 37-0000-0198 | | | | | | | | |
| HP | 15 | | | | | | | | |
| VOLTS | 230/460 | | | | | | | | |
| AMP | 30.6/15.3 | | | | | | | | |
| RPM | 3450 | | | | | | | | |
| FRAME | 254T | | HZ | 60 | | PH | 3 | | |
| SER.F. | 1.15 | CODE | G | DES | A | CLASS | F | | |
| NEMA-NOM-EFF | 91 | PF | 98 | | | | | | |
| RATING | 40C AMB-CONT | | | | | | | | |
| CC | 010A | | | | | | | | |
| DE | 6309 | | ODE | 6206 | | | | | |
| ENCL | TEFC | SN | | | | | | | |
| BLANK | 20: CT, 20:1 VT, 1.00SF | | | | | | | | |

AC Induction Motor Performance Data

Record # 66521

Typical performance - not guaranteed values

| Winding: 37WGL723-R001 | | Type: 3756M | | Enclosure: TEFC | |
|-------------------------------|--------------|----------------------------|--|------------------------------|-------------|
| Nameplate Data | | | 460 V, 60 Hz: High Voltage Connection | | |
| Rated Output (HP) | 15 | Full Load Torque | 22.11 LB-FT | | |
| Volts | 230/460 | Start Configuration | direct on line | | |
| Full Load Amps | 30.6/15.3 | Breakdown Torque | 67.78 LB-FT | | |
| R.P.M. | 3450 | Pull-up Torque | 34.29 LB-FT | | |
| Hz | 60 | Phase | 3 | Locked-rotor Torque | 39.15 LB-FT |
| NEMA Design Code | B | KVA Code | G | Starting Current | 114 A |
| Service Factor (S.F.) | 1.15 | No-load Current | 2.51 A | | |
| NEMA Nom. Eff. | 91 | Power Factor | 98 | Line-line Res. @ 25°C | 0.545 Ω |
| Rating - Duty | 40C AMB-CONT | | Temp. Rise @ Rated Load | 78°C | |
| S.F. Amps | | | Temp. Rise @ S.F. Load | 100°C | |
| | | | Locked-rotor Power Factor | 29.7 | |
| | | | Rotor inertia | 0.512 LB-FT ² | |

Load Characteristics 460 V, 60 Hz, 15 HP

| % of Rated Load | 25 | 50 | 75 | 100 | 125 | 150 | S.F. |
|------------------------|-----------|-----------|-----------|------------|------------|------------|-------------|
| Power Factor | 88 | 98 | 99 | 98 | 97 | 95 | 97 |
| Efficiency | 90.4 | 92.9 | 92.3 | 91.4 | 90 | 88 | 90 |
| Speed | 3573 | 3543 | 3512 | 3479 | 3440 | 3392 | 3439 |
| Line amperes | 4.12 | 7.42 | 11.12 | 15.27 | 19.85 | 25.61 | 18.2 |

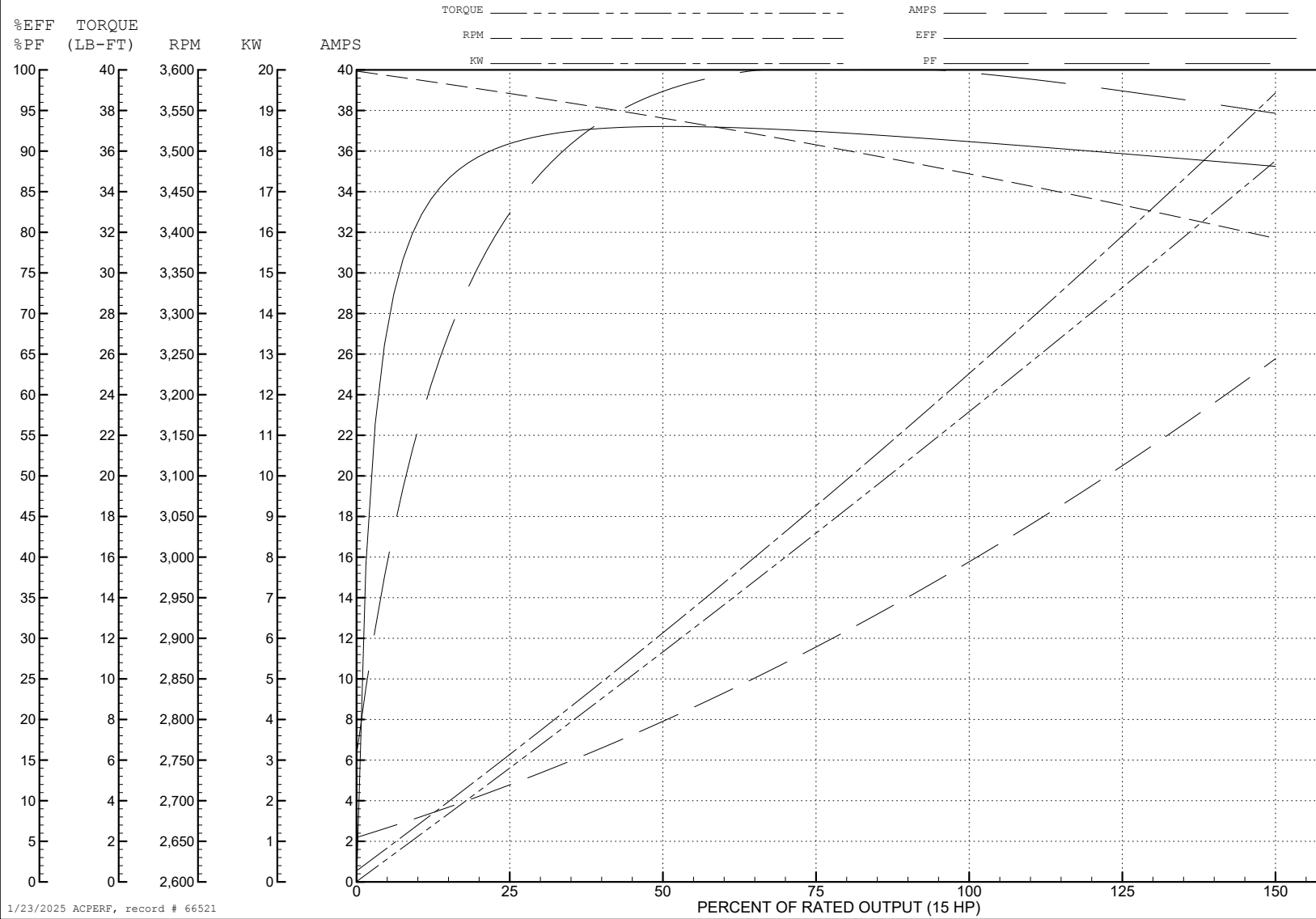
ABB Motors and Mechanical Inc.

WINDING # 37WGL723

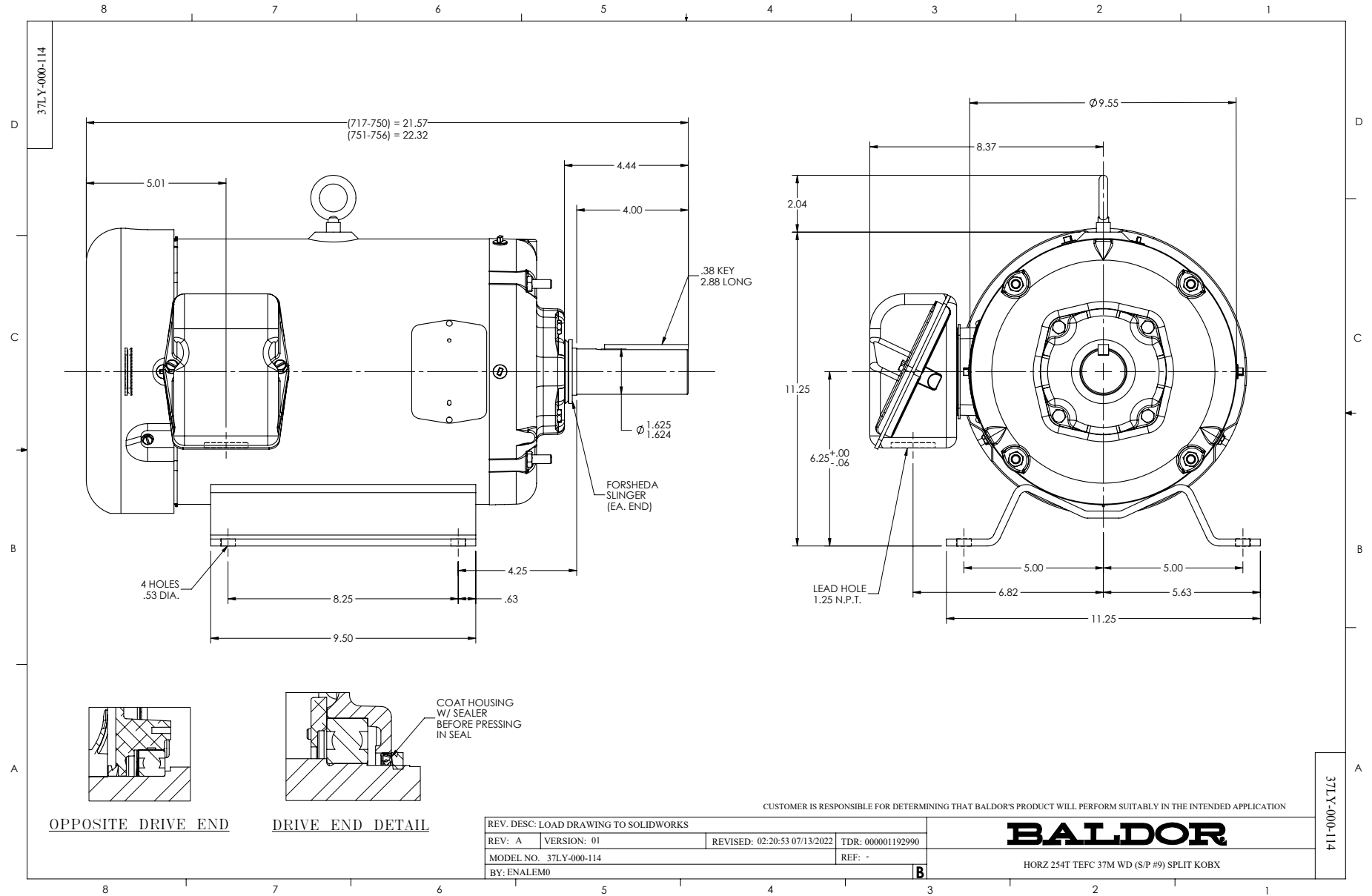
Typical performance - not guaranteed values.

15 HP 3 PH 60 HZ 3450 RPM 460 V 3756M

TORQUES (LB-FT): PO=67.78 PU=34.29 LR=39.15 LRA=114



1/23/2025 ACPERF, record # 66521



CD0005

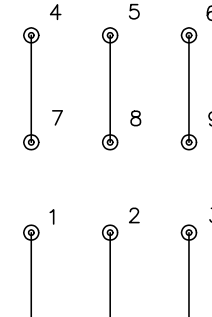


LOW VOLTAGE
(2Y)



LINE

HIGH VOLTAGE
(1Y)



LINE

NOTES:

1. INTERCHANGE ANY TWO LINE LEADS TO REVERSE ROTATION.
2. OPTIONAL THERMOSTATS ARE PROVIDED WHEN SPECIFIED.
3. ACTUAL NUMBER OF INTERNAL PARALLEL CIRCUITS MAY BE A MULTIPLE OF THOSE SHOWN ABOVE.
4. LEAD COLORS ARE OPTIONAL. LEADS MUST ALWAYS BE NUMBERED AS SHOWN.

CD0005

| | | | |
|---|---------|-------------------------|--------------|
| REV. DESC: REVISE TO SHOW OPTIONAL COLORS | | | |
| REV. LTR: E | BY: JLP | REVISED: 01/19/99 10:15 | TDR: 0171435 |
| S00000 | | FILE: AAA00005140 | MDL: - |
| | | MTL: - | |

BALDOR ELECTRIC Co.

3PH, DV, 9 LEADS