

BALDOR • RELIANCE

Customer information packet

EWDM22976T

7.5HP, 1180RPM, 3PH, 60HZ, 254T, TEFC, F1

Class - None

Division - Not Applicable

Specifications

Enclosure	TEFC
Frame	254T
Frame Material	Steel
Frequency	60.00 Hz
Haz Area Class and Group	None
Haz Area Division	Not Applicable
Motor Letter Type	Three Phase
Output @ Frequency	7.500 HP @ 60 HZ
Phase	3
Synchronous Speed @ Frequency	1200 RPM @ 60 HZ
Voltage @ Frequency	230.0 V @ 60 HZ 460.0 V @ 60 HZ
Agency Approvals	NEMA PREMIUM UR CSA EEV
Ambient Temperature	40 °C
Auxillary Box	No Auxillary Box
Auxillary Box Lead Termination	None
Base Indicator	Rigid
Bearing Grease Type	Polyrex EM (-20F +300F)
Blower	None
Current @ Voltage	10.700 A @ 460.0 V 21.400 A @ 230.0 V
Design Code	A
Drip Cover	No Drip Cover
Duty Rating	CONT
Efficiency @ 100% Load	91.0 %
Electrically Isolated Bearing	Not Electrically Isolated
Feedback Device	NO FEEDBACK
Heater Indicator	No Heater
High Voltage Full Load Amps	10.7 a
Insulation Class	F

Part detail

Revision	G
Type	AC
Mech. spec.	
Base	
Status	PRD/A
Elec. spec.	39WGX429
Layout	39LYS015
Eff. date	02-14-2024
CD Diagram	CD0005
Poles	06
Leads	9#12
Proprietary	False
Created date	08-13-2019

Inverter Code	Inverter Duty
IP Rating	IP55
KVA Code	J
Lifting Lugs	Standard Lifting Lugs
Locked Bearing Indicator	Locked Bearing
Max Speed	1800 rpm
Motor Lead Termination	Flying Leads
Motor Standards	NEMA
Motor Type	3954M
Mounting Arrangement	F1
Number of Poles	6
Overall Length	23.57 IN
Power Factor	71
Product Family	Wash Down
Pulley Face Code	Standard
Rodent Screen	None
Service Factor	1.00
Shaft Diameter	1.625 IN
Shaft Ground Indicator	No Shaft Grounding
Shaft Rotation	Reversible
Speed	1180 rpm
Speed Code	Single Speed
Starting Method	Direct on line
Thermal Device - Bearing	None
Thermal Device - Winding	None
Vibration Sensor Indicator	No Vibration Sensor
Winding Thermal 1	None
Winding Thermal 2	None

Nameplate

NP1669L									
CAT.NO.	EWDM22976T								
SPEC.	39-0000-0188								
HP	7.5								
VOLTS	230/460 20:1 CT/VT								
AMP	21.4/10.7								
RPM	1180								
FRAME	254T		HZ	60		PH	3		
SER.F.	1.00	CODE	J	DES	A	CLASS	F		
NEMA-NOM-EFF	91	PF	71						
RATING	40C AMB-CONT								
CC	010A								
DE	6309	ODE	6208						
ENCL	TEFC	SN							
BLANK	1.15SF ON SINEWAVE								

AC Induction Motor Performance Data

Record # 78164

Typical performance - not guaranteed values

Winding: 39WGX429-R007		Type: 3954M	Enclosure: TEFC	
Nameplate Data			460 V, 60 Hz: High Voltage Connection	
Rated Output (HP)	7.5	Full Load Torque	33.3 LB-FT	
Volts	230/460	Start Configuration	direct on line	
Full Load Amps	21.4/10.7	Breakdown Torque	99.5 LB-FT	
R.P.M.	1180	Pull-up Torque	39.7 LB-FT	
Hz	60 Phase	3	Locked-rotor Torque	58.4 LB-FT
NEMA Design Code	A KVA Code	J	Starting Current	70.1 A
Service Factor (S.F.)	1.15	No-load Current	5.52 A	
NEMA Nom. Eff.	91 Power Factor	71	Line-line Res. @ 25°C	0.895 Ω
Rating - Duty	40C AMB-CONT	Temp. Rise @ Rated Load	32°C	
S.F. Amps		Temp. Rise @ S.F. Load	38°C	
		Locked-rotor Power Factor	25.8	
		Rotor inertia	4.34 LB-FT ²	

Load Characteristics 460 V, 60 Hz, 7.5 HP

% of Rated Load	25	50	75	100	125	150	S.F.
Power Factor	33	53	65	71	74	75	73
Efficiency	84.9	90.6	91.8	91.9	91.4	90.5	91.6
Speed	1196	1192	1188	1183	1178	1173	1180
Line amperes	6.25	7.28	8.82	10.72	12.91	15.5	12

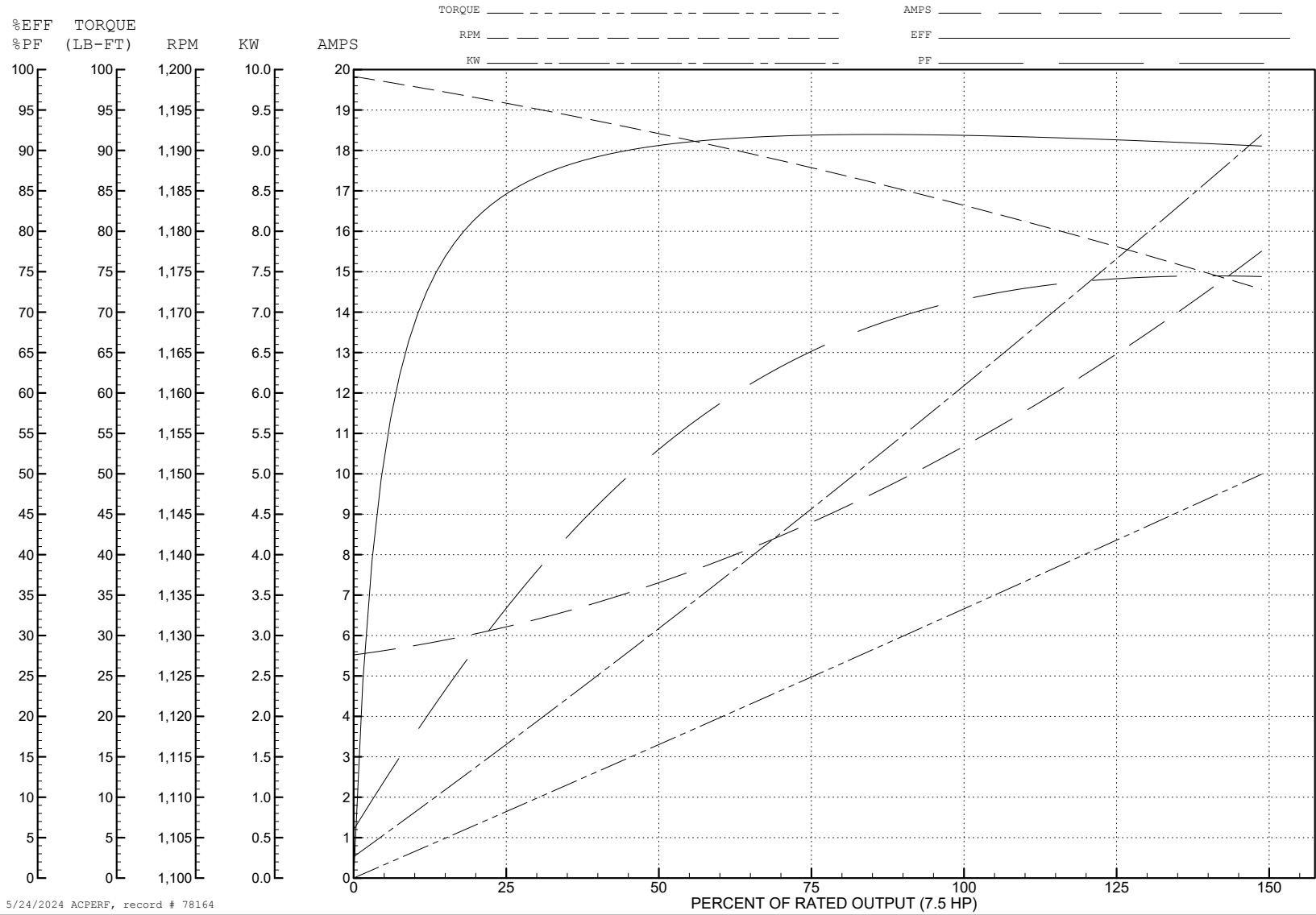
ABB Motors and Mechanical Inc.

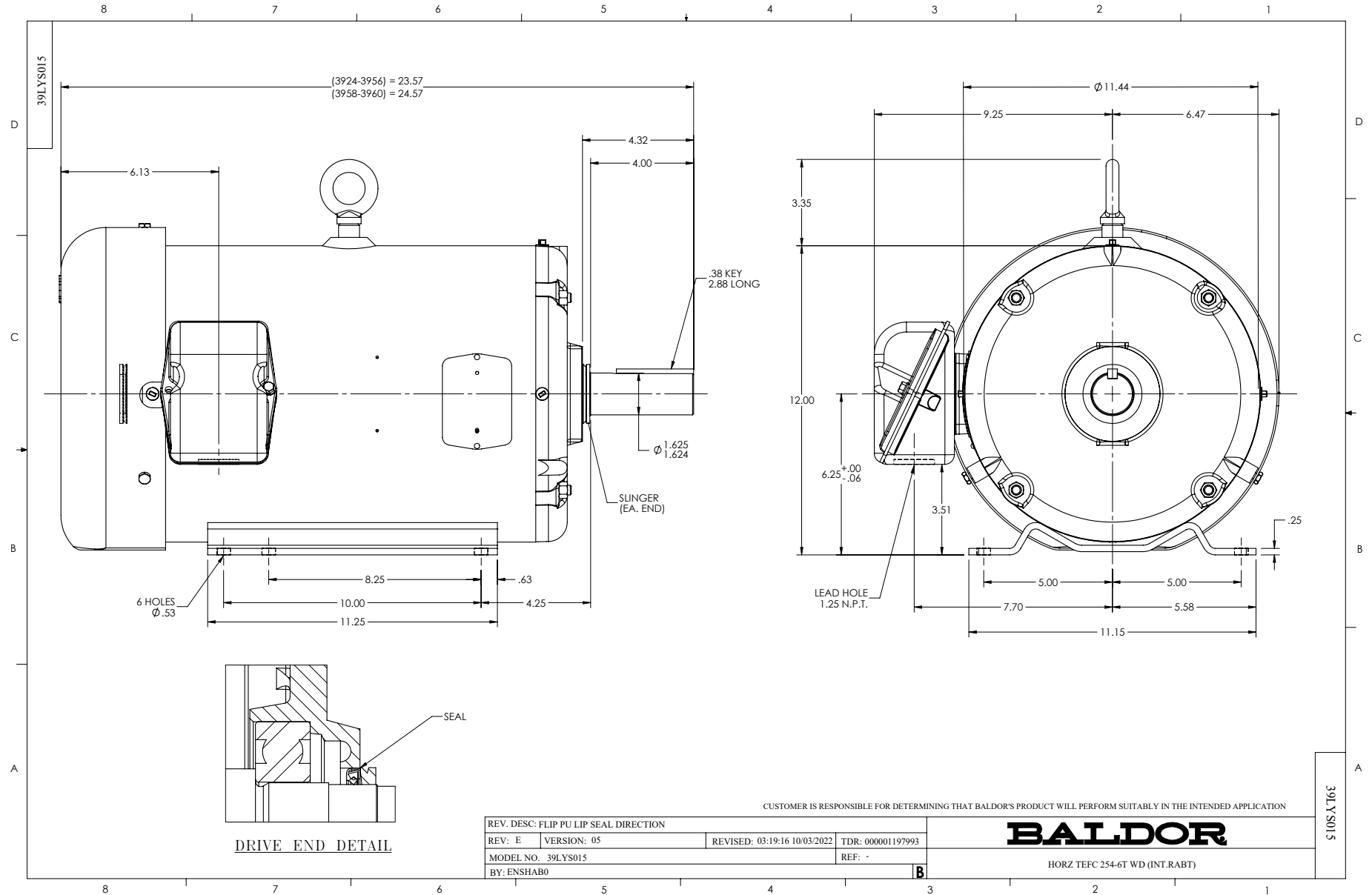
WINDING # 39WGx429

Typical performance - not guaranteed values.

7.5 HP 3 PH 60 HZ 1180 RPM 460 V 3954M

TORQUES (LB-FT): PO=99.5 PU=39.7 LR=58.4 LRA=70.1





CD0005



LOW VOLTAGE
(2Y)



LINE

HIGH VOLTAGE
(1Y)



LINE

NOTES:

1. INTERCHANGE ANY TWO LINE LEADS TO REVERSE ROTATION.
2. OPTIONAL THERMOSTATS ARE PROVIDED WHEN SPECIFIED.
3. ACTUAL NUMBER OF INTERNAL PARALLEL CIRCUITS MAY BE A MULTIPLE OF THOSE SHOWN ABOVE.
4. LEAD COLORS ARE OPTIONAL. LEADS MUST ALWAYS BE NUMBERED AS SHOWN.

CD0005

REV. DESC: REVISE TO SHOW OPTIONAL COLORS			
REV. LTR: E	BY: JLP	REVISED: 01/19/99 10:15	TDR: 0171435
S00000		FILE: AAA00005140	MDL: -
		MTL: -	

BALDOR ELECTRIC Co.

3PH, DV, 9 LEADS