

BALDOR • RELIANCE

Customer information packet

ERM3155

2HP, 3450RPM, 3PH, 60HZ, 56H, 3524M, OPEN, F1, N

Class - None

Division - Not Applicable

Copyright © All product information within this document is subject to ABB Motors and Mechanical Inc. copyright © protection, unless otherwise noted.

1/23/2025 5:44:14 PM

Specifications

Enclosure	OPEN
Frame	56H
Frame Material	Steel
Frequency	60.00 Hz
Haz Area Class and Group	None
Haz Area Division	Not Applicable
Motor Letter Type	Three Phase
Output @ Frequency	2.000 HP @ 60 HZ
Phase	3
Synchronous Speed @ Frequency	3600 RPM @ 60 HZ
Voltage @ Frequency	230.0 V @ 60 HZ 460.0 V @ 60 HZ
Agency Approvals	UR CSA
Ambient Temperature	40 °C
Auxillary Box	No Auxillary Box
Auxillary Box Lead Termination	None
Base Indicator	Resilient
Bearing Grease Type	Polyrex EM (-20F +300F)
Blower	None
Current @ Voltage	2.600 A @ 460.0 V 5.200 A @ 230.0 V
Design Code	B
Drip Cover	No Drip Cover
Duty Rating	CONT
Efficiency @ 100% Load	85.5 %
Electrically Isolated Bearing	Not Electrically Isolated
Feedback Device	NO FEEDBACK
Front Face Code	Terminal Panel
Front Shaft Indicator	None
Heater Indicator	No Heater
High Voltage Full Load Amps	2.6 a

Part detail

Revision	M
Type	AC
Mech. spec.	35F883
Base	
Status	PRD/A
Elec. spec.	35WGS254
Layout	35LYF883
Eff. date	05-16-2024
CD Diagram	CD0005
Poles	02
Leads	9#18
Proprietary	False
Created date	09-30-2014

Insulation Class	B
Inverter Code	Inverter Ready
KVA Code	K
Lifting Lugs	No Lifting Lugs
Locked Bearing Indicator	No Locked Bearing
Motor Lead Exit	Terminal Panel
Motor Lead Quantity/Wire Size	9 @ 18 AWG
Motor Lead Termination	Flying Leads
Motor Standards	NEMA
Motor Type	3524M
Mounting Arrangement	F1
Number of Poles	2
Overall Length	12.42 IN
Power Factor	85
Product Family	General Purpose
Pulley End Bearing Type	Ball
Pulley Face Code	Resilient Mount
Pulley Shaft Indicator	Standard
Rodent Screen	None
RoHS Status	ROHS COMPLIANT
Service Factor	1.15
Shaft Diameter	0.625 IN
Shaft Extension Location	Pulley End
Shaft Ground Indicator	No Shaft Grounding
Shaft Rotation	Reversible
Shaft Slinger Indicator	No Slinger
Speed	3450 rpm
Speed Code	Single Speed
Starting Method	Direct on line
Thermal Device - Bearing	None
Thermal Device - Winding	None
Vibration Sensor Indicator	No Vibration Sensor
Winding Thermal 1	None
Winding Thermal 2	None

Nameplate

NP3155L									
CAT.NO.	ERM3155								
SPEC.	35F883S254G1								
HP	2								
VOLTS	230/460								
AMP	5.2/2.6								
RPM	3450								
FRAME	56H		HZ	60		PH	3		
SER.F.	1.15	CODE	K	DES	B	CL	B		
F.L. AVG. EFF.	85.5	PF	85						
RATING	40C AMB-CONT								
CC									
DE	6203		ODE	6203					
ENCL	OPEN	SN							

AC Induction Motor Performance Data

Record # 47466

Typical performance - not guaranteed values

Winding: 35WGS254-R001		Type: 3524M		Enclosure: OPEN	
Nameplate Data			460 V, 60 Hz: High Voltage Connection		
Rated Output (HP)	2	Full Load Torque	3 LB-FT		
Volts	230/460	Start Configuration	direct on line		
Full Load Amps	5.2/2.6	Breakdown Torque	11.6 LB-FT		
R.P.M.	3450	Pull-up Torque	8.2 LB-FT		
Hz	60 Phase	Locked-rotor Torque	10.7 LB-FT		
NEMA Design Code	B KVA Code	Starting Current	18.8 A		
Service Factor (S.F.)	1.15	No-load Current	1 A		
NEMA Nom. Eff.	85.5 Power Factor	Line-line Res. @ 25°C	8.08 Ω		
Rating - Duty	40C AMB-CONT	Temp. Rise @ Rated Load	36°C		
S.F. Amps		Temp. Rise @ S.F. Load	43°C		
		Locked-rotor Power Factor	54		
		Rotor inertia	0.0657 LB-FT ²		

Load Characteristics 460 V, 60 Hz, 2 HP

% of Rated Load	25	50	75	100	125	150	S.F.
Power Factor	54	73	82	86	88	88	87
Efficiency	78.2	84.9	86.2	85.8	84.5	82.9	85
Speed	3566	3536	3504	3469	3429	3387	3445
Line amperes	1.2	1.6	2.1	2.6	3.2	3.8	3

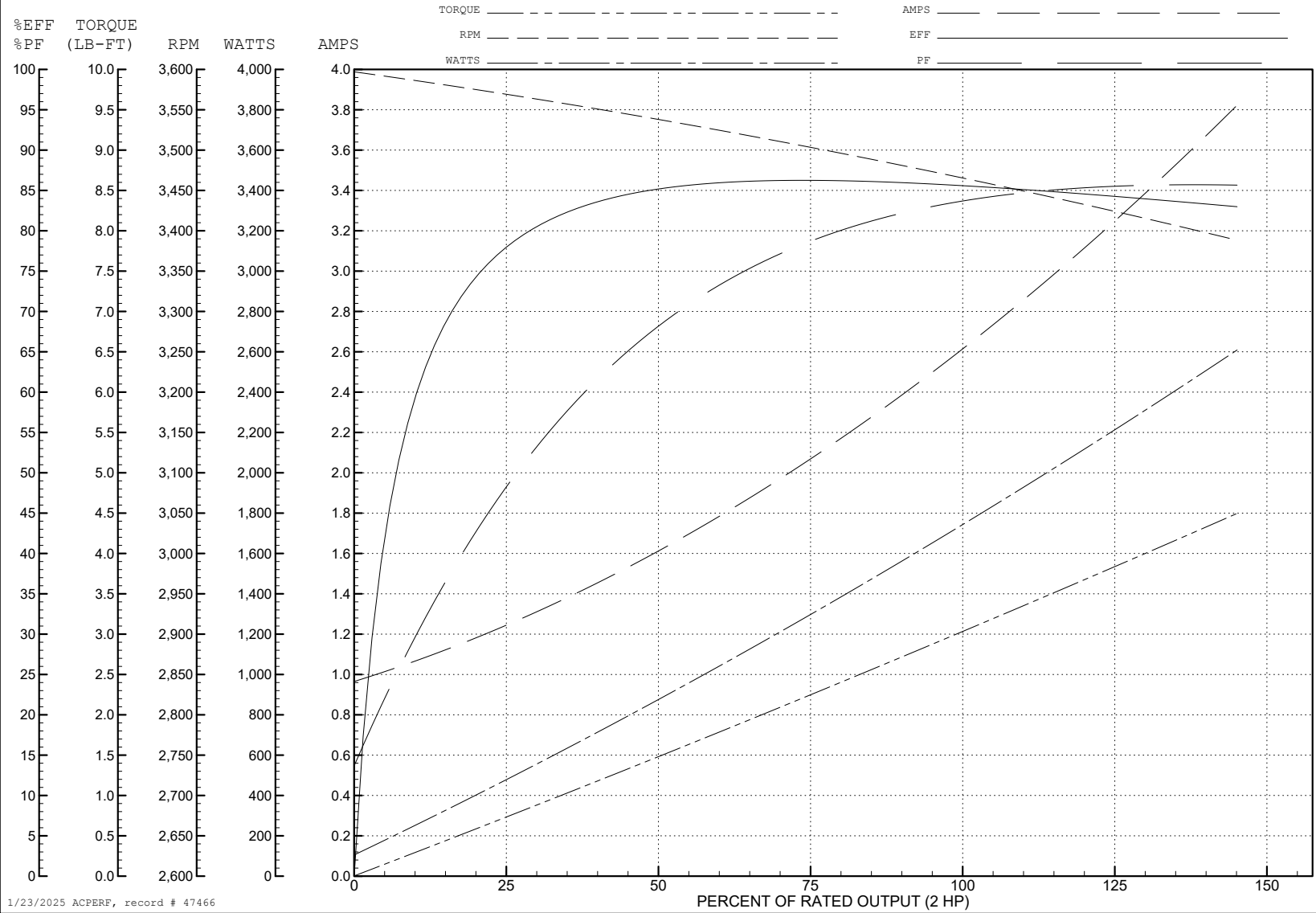
ABB Motors and Mechanical Inc.

WINDING # 35WGS254

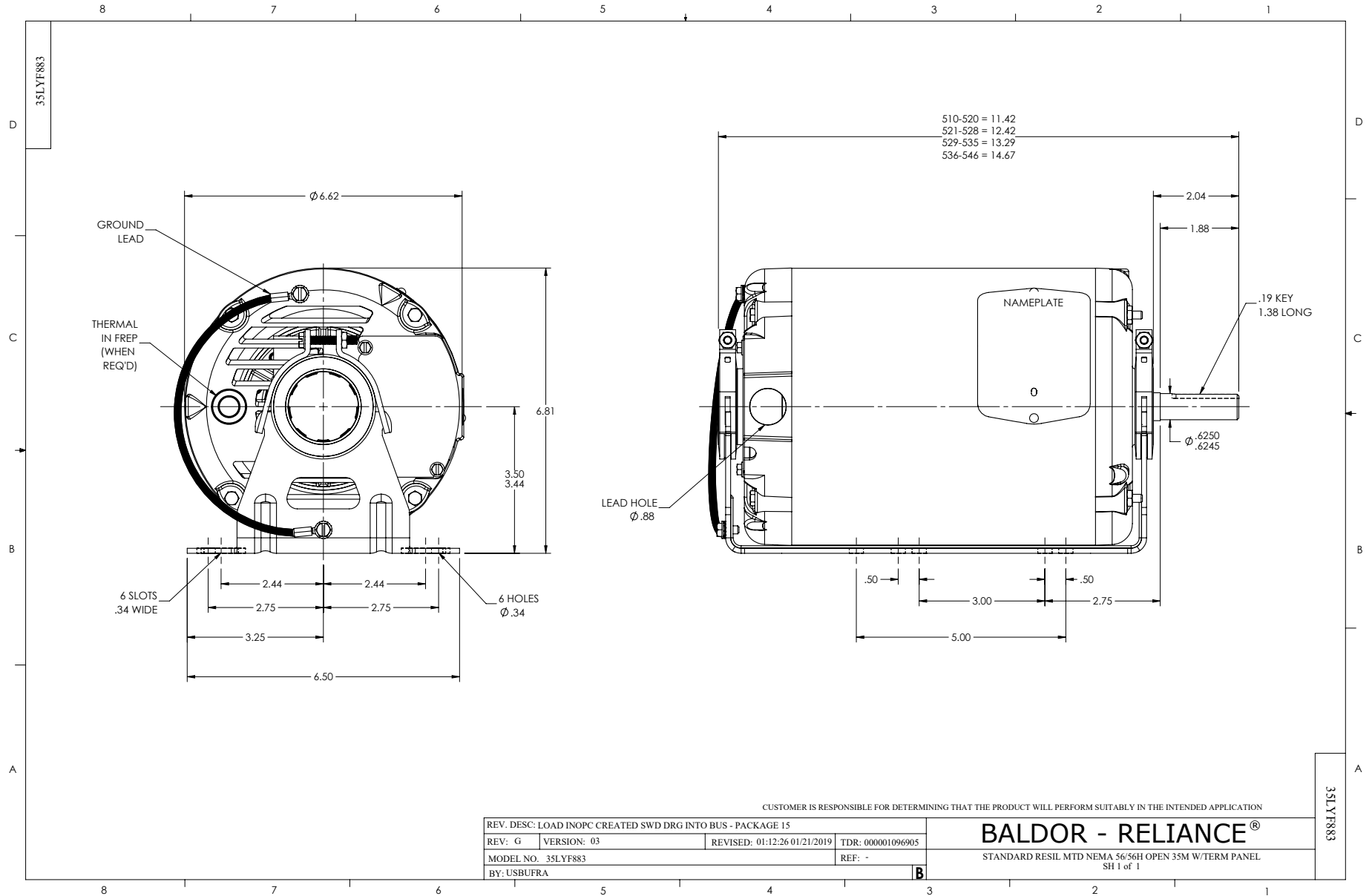
Typical performance - not guaranteed values.

2 HP 3 PH 60 HZ 3450 RPM 460 V 3524M

TORQUES (LB-FT): PO=11.6 PU=8.2 LR=10.7 LRA=18.8



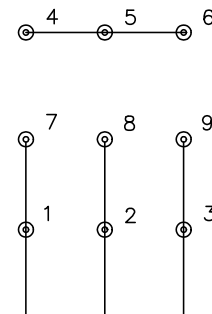
1/23/2025 ACPERF, record # 47466



CD0005



LOW VOLTAGE (2Y)



LINE

HIGH VOLTAGE (1Y)



LINE

NOTES:

1. INTERCHANGE ANY TWO LINE LEADS TO REVERSE ROTATION.
2. OPTIONAL THERMOSTATS ARE PROVIDED WHEN SPECIFIED.
3. ACTUAL NUMBER OF INTERNAL PARALLEL CIRCUITS MAY BE A MULTIPLE OF THOSE SHOWN ABOVE.
4. LEAD COLORS ARE OPTIONAL. LEADS MUST ALWAYS BE NUMBERED AS SHOWN.

CD0005

REV. DESC: REVISE TO SHOW OPTIONAL COLORS			
REV. LTR: E	BY: JLP	REVISED: 01/19/99 10:15	TDR: 0171435
S00000		FILE: AAA00005140	MDL: -
		MTL: -	

BALDOR ELECTRIC Co.

3PH, DV, 9 LEADS