

BALDOR • RELIANCE

Customer information packet

ERM3003

.25HP, 1725RPM, 3PH, 60HZ, 48, 3413M, OPEN, F1

Class - None

Division - Not Applicable

Specifications

Enclosure	OPEN
Frame	48
Frame Material	Steel
Frequency	60.00 Hz
Haz Area Class and Group	None
Haz Area Division	Not Applicable
Motor Letter Type	Three Phase
Output @ Frequency	.250 HP @ 60 HZ
Phase	3
Synchronous Speed @ Frequency	1800 RPM @ 60 HZ
Voltage @ Frequency	230.0 V @ 60 HZ 460.0 V @ 60 HZ
Agency Approvals	UR CSA
Ambient Temperature	40 °C
Auxillary Box	No Auxillary Box
Auxillary Box Lead Termination	None
Base Indicator	Resilient
Bearing Grease Type	Polyrex EM (-20F +300F)
Blower	None
Current @ Voltage	.500 A @ 460.0 V 1.000 A @ 230.0 V 1.300 A @ 208.0 V
Design Code	B
Drip Cover	No Drip Cover
Duty Rating	CONT
Efficiency @ 100% Load	69.5 %
Electrically Isolated Bearing	Not Electrically Isolated
Feedback Device	NO FEEDBACK
Front Face Code	Resilient Mount
Front Shaft Indicator	None
Heater Indicator	No Heater

Part detail

Revision	J
Type	AC
Mech. spec.	34K015
Base	
Status	PRD/A
Elec. spec.	34WGR137
Layout	34LYK015
Eff. date	05-16-2024
CD Diagram	CD0005
Poles	04
Leads	9#18
Proprietary	False
Created date	10-06-2014

High Voltage Full Load Amps	0.5 a
Insulation Class	B
Inverter Code	Not Inverter
KVA Code	M
Lifting Lugs	No Lifting Lugs
Locked Bearing Indicator	No Locked Bearing
Motor Lead Exit	Terminal Panel Or Lead Hole
Motor Lead Quantity/Wire Size	9 @ 18 AWG
Motor Lead Termination	Flying Leads
Motor Standards	NEMA
Motor Type	3413M
Mounting Arrangement	F1
Number of Poles	4
Overall Length	10.34 IN
Power Factor	62
Product Family	General Purpose
Pulley End Bearing Type	Ball
Pulley Face Code	Resilient Mount
Pulley Shaft Indicator	Standard
Rodent Screen	None
RoHS Status	ROHS COMPLIANT
Service Factor	1.35
Shaft Diameter	0.500 IN
Shaft Extension Location	Pulley End
Shaft Ground Indicator	No Shaft Grounding
Shaft Rotation	Reversible
Shaft Slinger Indicator	No Slinger
Speed	1725 rpm
Speed Code	Single Speed
Starting Method	Direct on line
Thermal Device - Bearing	None
Thermal Device - Winding	None
Vibration Sensor Indicator	No Vibration Sensor
Winding Thermal 1	None

Winding Thermal 2

None

Nameplate

NP3155L									
CAT.NO.	ERM3003								
SPEC.	34K015R137G1								
HP	.25								
VOLTS	230/460								
AMP	1/.5								
RPM	1725								
FRAME	48		HZ	60		PH	3		
SER.F.	1.35	CODE	M	DES	B	CL	B		
F.L. AVG. EFF.	69.5	PF	62						
RATING	40C AMB-CONT								
CC									
DE	6203		ODE	6203					
ENCL	OPEN	SN							
	SFA 1.2/.6								

AC Induction Motor Performance Data

Record # 47473

Typical performance - not guaranteed values

Winding: 34WGR137-R002		Type: 3413M		Enclosure: OPEN	
Nameplate Data			460 V, 60 Hz: High Voltage Connection		
Rated Output (HP)	.25	Full Load Torque	0.76 LB-FT		
Volts	230/460	Start Configuration	direct on line		
Full Load Amps	1/.5	Breakdown Torque	3.28 LB-FT		
R.P.M.	1725	Pull-up Torque	2.41 LB-FT		
Hz	60	Locked-rotor Torque	1.91 LB-FT		
NEMA Design Code	B	Starting Current	3.43 A		
Service Factor (S.F.)	1.35	No-load Current	0.395 A		
NEMA Nom. Eff.	69.5	Line-line Res. @ 25°C	60.8 Ω		
Rating - Duty	40C AMB-CONT	Temp. Rise @ Rated Load	16°C		
S.F. Amps	1.2/.6	Temp. Rise @ S.F. Load	20°C		
		Locked-rotor Power Factor	62.5478		
		Rotor inertia	0.031 lb-ft ²		

Load Characteristics 460 V, 60 Hz, 0.25 HP

% of Rated Load	25	50	75	100	125	150	S.F.
Power Factor	28	41	53	62	69	74	71
Efficiency	52.2	65.8	72.5	74	74.8	74.2	74.6
Speed	1783	1771	1757	1742	1726	1707	1718
Line amperes	0.405	0.428	0.467	0.514	0.568	0.64	0.597

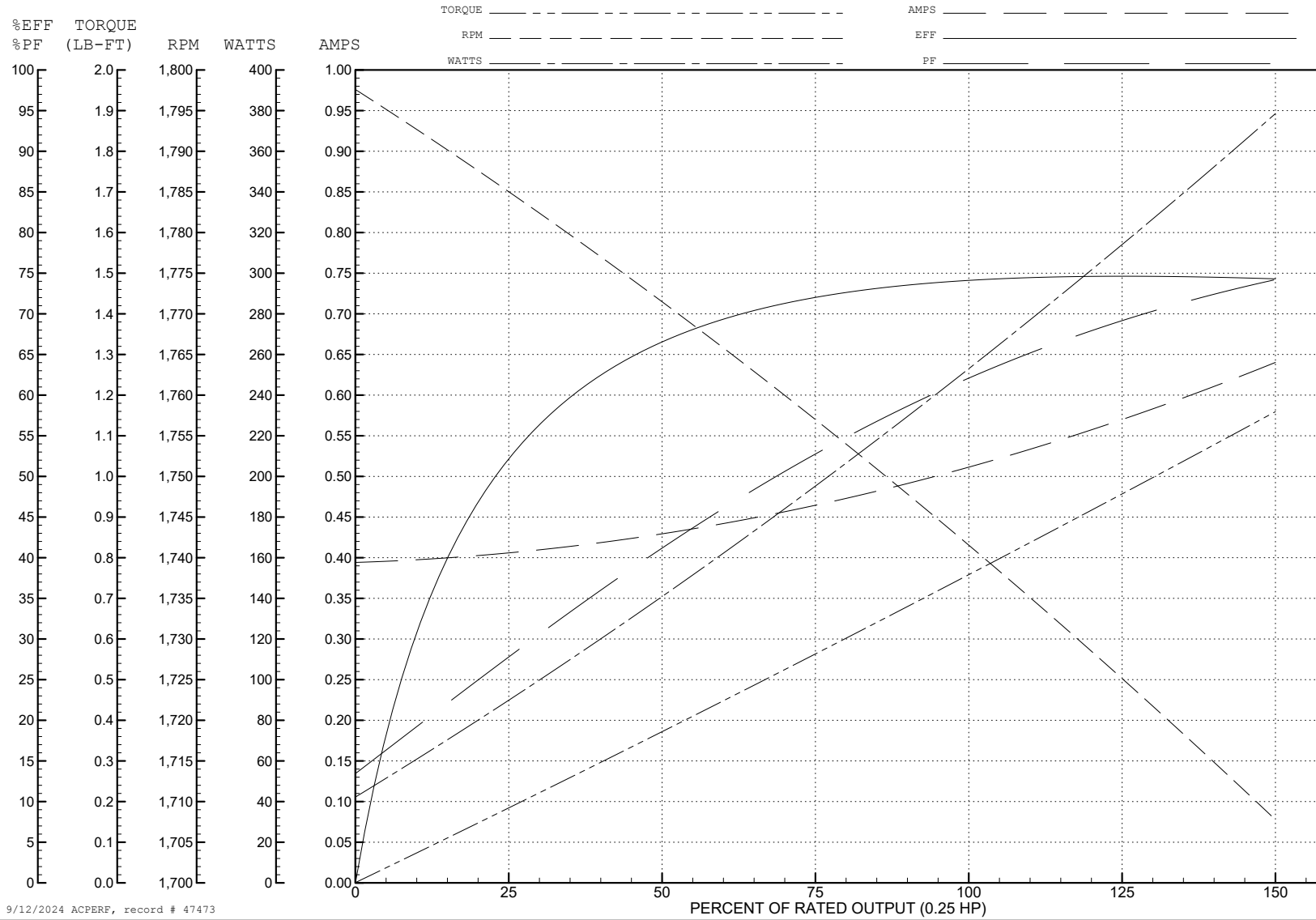
ABB Motors and Mechanical Inc.

WINDING # 34WGR137

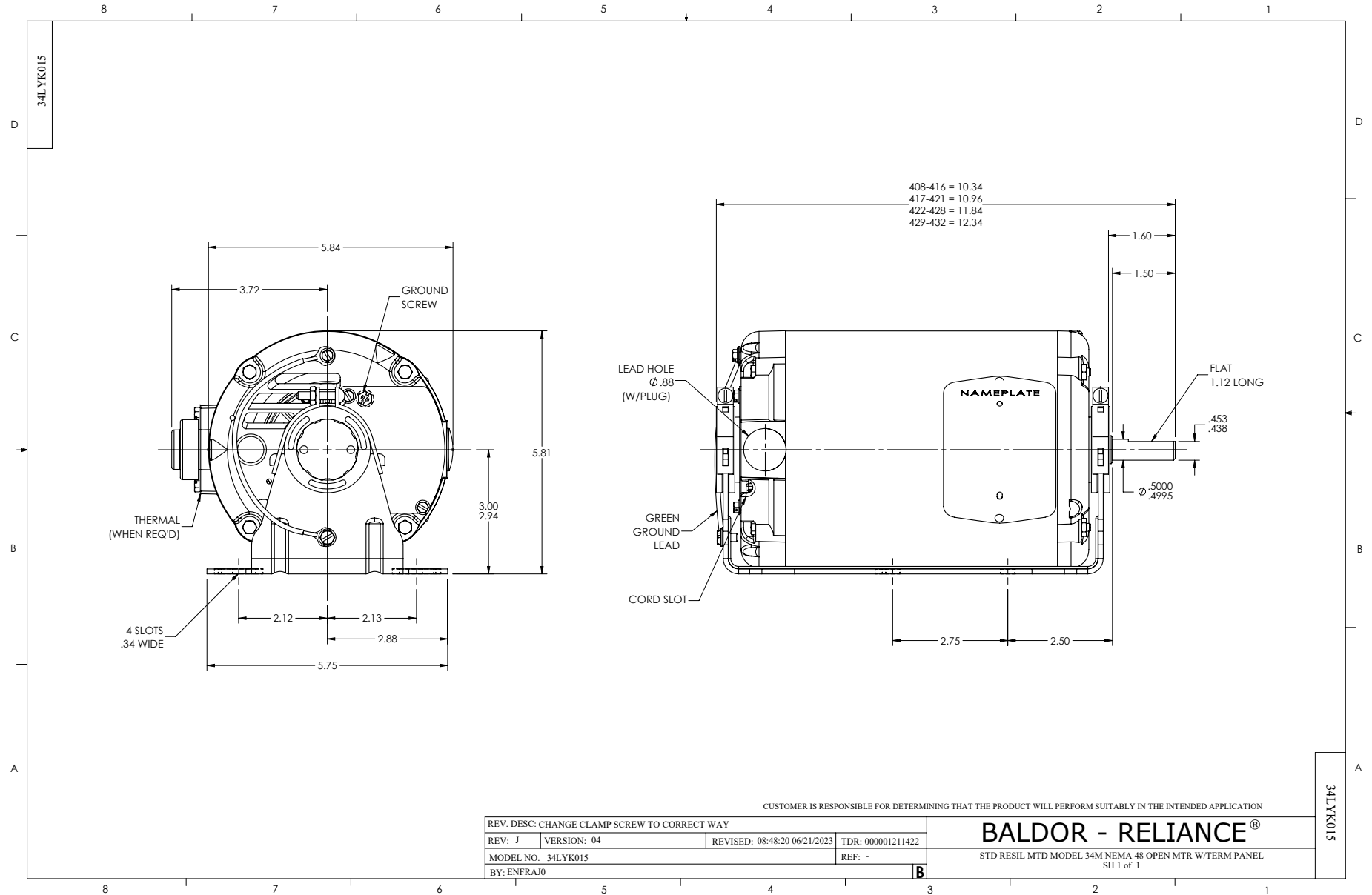
0.25 HP 3 PH 60 HZ 1725 RPM 460 V 3413M

Typical performance - not guaranteed values.

TORQUES (LB-FT): PO=3.28 PU=2.41 LR=1.91 LRA=3.43



9/12/2024 ACPERF, record # 47473



CD0005



LOW VOLTAGE
(2Y)



LINE

HIGH VOLTAGE
(1Y)



LINE

NOTES:

1. INTERCHANGE ANY TWO LINE LEADS TO REVERSE ROTATION.
2. OPTIONAL THERMOSTATS ARE PROVIDED WHEN SPECIFIED.
3. ACTUAL NUMBER OF INTERNAL PARALLEL CIRCUITS MAY BE A MULTIPLE OF THOSE SHOWN ABOVE.
4. LEAD COLORS ARE OPTIONAL. LEADS MUST ALWAYS BE NUMBERED AS SHOWN.

CD0005

REV. DESC: REVISE TO SHOW OPTIONAL COLORS			
REV. LTR: E	BY: JLP	REVISED: 01/19/99 10:15	TDR: 0171435
S00000		FILE: AAA00005140	MDL: -
		MTL: -	

BALDOR ELECTRIC Co.

3PH, DV, 9 LEADS