

**BALDOR • RELIANCE**

---

# Customer information packet

## EMVM3613C

3.7KW, 3450RPM, 3PH, 60HZ, D100LC, 3634M, TEFC

Class - None

Division - Not Applicable

## Specifications

Enclosure	TEFC
Frame	D100LC
Frame Material	Steel
Frequency	60.00 Hz
Haz Area Class and Group	None
Haz Area Division	Not Applicable
Motor Letter Type	Three Phase
Output @ Frequency	3.700 KW @ 60 HZ
Phase	3
Synchronous Speed @ Frequency	3600 RPM @ 60 HZ
Voltage @ Frequency	230.0 V @ 60 HZ 460.0 V @ 60 HZ
Agency Approvals	CSA EEV CE
Ambient Temperature	40 °C
Auxillary Box	No Auxillary Box
Auxillary Box Lead Termination	None
Base Indicator	No Mounting
Bearing Grease Type	Polyrex EM (-20F +300F)
Blower	None
Current @ Voltage	11.200 A @ 230.0 V 12.400 A @ 208.0 V 5.600 A @ 460.0 V
Design Code	B
Drip Cover	No Drip Cover
Duty Rating	CONT
Efficiency @ 100% Load	88.5 %
Electrically Isolated Bearing	Not Electrically Isolated
Feedback Device	NO FEEDBACK
Frame Prefix	D
Front Face Code	Standard
Front Shaft Indicator	None

## Part detail

Revision	K
Type	AC
Mech. spec.	36H178
Base	
Status	PRD/A
Elec. spec.	36WGT202
Layout	36LYH178
Eff. date	05-01-2024
CD Diagram	CD0005
Poles	02
Leads	9#16
Proprietary	False
Created date	05-07-2015

Heater Indicator	No Heater
High Voltage Full Load Amps	5.6 a
Insulation Class	F
Inverter Code	Inverter Ready
KVA Code	G
Lifting Lugs	No Lifting Lugs
Locked Bearing Indicator	Locked Bearing
Motor Lead Exit	Ko Box
Motor Lead Quantity/Wire Size	9 @ 16 AWG
Motor Lead Termination	Flying Leads
Motor Standards	IEC
Motor Type	3634M
Mounting Arrangement	B14
Number of Poles	2
Overall Length	15.88 IN
Power Factor	93
Product Family	General Purpose
Pulley End Bearing Type	Ball
Pulley Face Code	C-Face
Pulley Shaft Indicator	Tapped & Key
Rodent Screen	None
Service Factor	1.15
Shaft Diameter	1.103 IN
Shaft Extension Location	Pulley End
Shaft Ground Indicator	No Shaft Grounding
Shaft Rotation	Reversible
Shaft Slinger Indicator	No Slinger
Speed	3450 rpm
Speed Code	Single Speed
Starting Method	Direct on line
Thermal Device - Bearing	None
Thermal Device - Winding	None
Vibration Sensor Indicator	No Vibration Sensor
Winding Thermal 1	None

**Winding Thermal 2**

**None**

---

**Nameplate**

<b>NP2672L</b>					
<b>CAT.NO.</b>	EMVM3613C				
<b>SPEC.</b>	36H178T202G1				
<b>IEC FRAME</b>	D100LC	<b>KW</b>	3.7		
<b>VOLTS</b>	230/460				
<b>AMP</b>	11.2/5.6				
<b>RPM</b>	3450	<b>ENCL</b>	TEFC		
<b>HZ</b>	60	<b>PH</b>	3	<b>CL</b>	F
<b>SER.F.</b>	1.15	<b>DES</b>	B	<b>CODE</b>	G
<b>NEMA-NOM-EFF</b>	88.5	<b>I.P.</b>	54		
<b>RATING</b>	40C AMB-CONT				
<b>CC</b>	010A	<b>USABLE AT 208V</b>		N/A	
<b>DE</b>	6206	<b>ODE</b>	6205		
<b>SER. #</b>					

**AC Induction Motor Performance Data**

Record # 57404

Typical performance - not guaranteed values

<b>Winding: 36WGT202-R012</b>		<b>Type: 3634M</b>		<b>Enclosure: TEFC</b>	
<b>Nameplate Data</b>			<b>460 V, 60 Hz: High Voltage Connection</b>		
<b>Rated Output (KW)</b>	3.7	<b>Full Load Torque</b>	7.54 LB-FT		
<b>Volts</b>	230/460	<b>Start Configuration</b>	direct on line		
<b>Full Load Amps</b>	11.2/5.6	<b>Breakdown Torque</b>	45.7 LB-FT		
<b>R.P.M.</b>	3450	<b>Pull-up Torque</b>	31 LB-FT		
<b>Hz</b>	60 <b>Phase</b>	3	<b>Locked-rotor Torque</b>	38.1 LB-FT	
<b>NEMA Design Code</b>	<b>B KVA Code</b>	G	<b>Starting Current</b>	36.4 A	
<b>Service Factor (S.F.)</b>		1.15	<b>No-load Current</b>	2.23 A	
<b>NEMA Nom. Eff.</b>	88.5 <b>Power Factor</b>	93	<b>Line-line Res. @ 25°C</b>	1.8592 Ω	
<b>Rating - Duty</b>		40C AMB-CONT	<b>Temp. Rise @ Rated Load</b>	65°C	
<b>S.F. Amps</b>			<b>Temp. Rise @ S.F. Load</b>	78°C	

**Load Characteristics 460 V, 60 Hz, 3.7 KW**

<b>% of Rated Load</b>	<b>25</b>	<b>50</b>	<b>75</b>	<b>100</b>	<b>125</b>	<b>150</b>	<b>S.F.</b>
<b>Power Factor</b>	53	74	83	88	90	92	89
<b>Efficiency</b>	81	87.4	88.8	88.8	88.1	87.1	88.4
<b>Speed</b>	3571.6	3546.9	3521.5	3493.5	3464.6	3436.2	3476
<b>Line amperes</b>	2.74	3.63	4.75	6	7.36	8.7	6.82

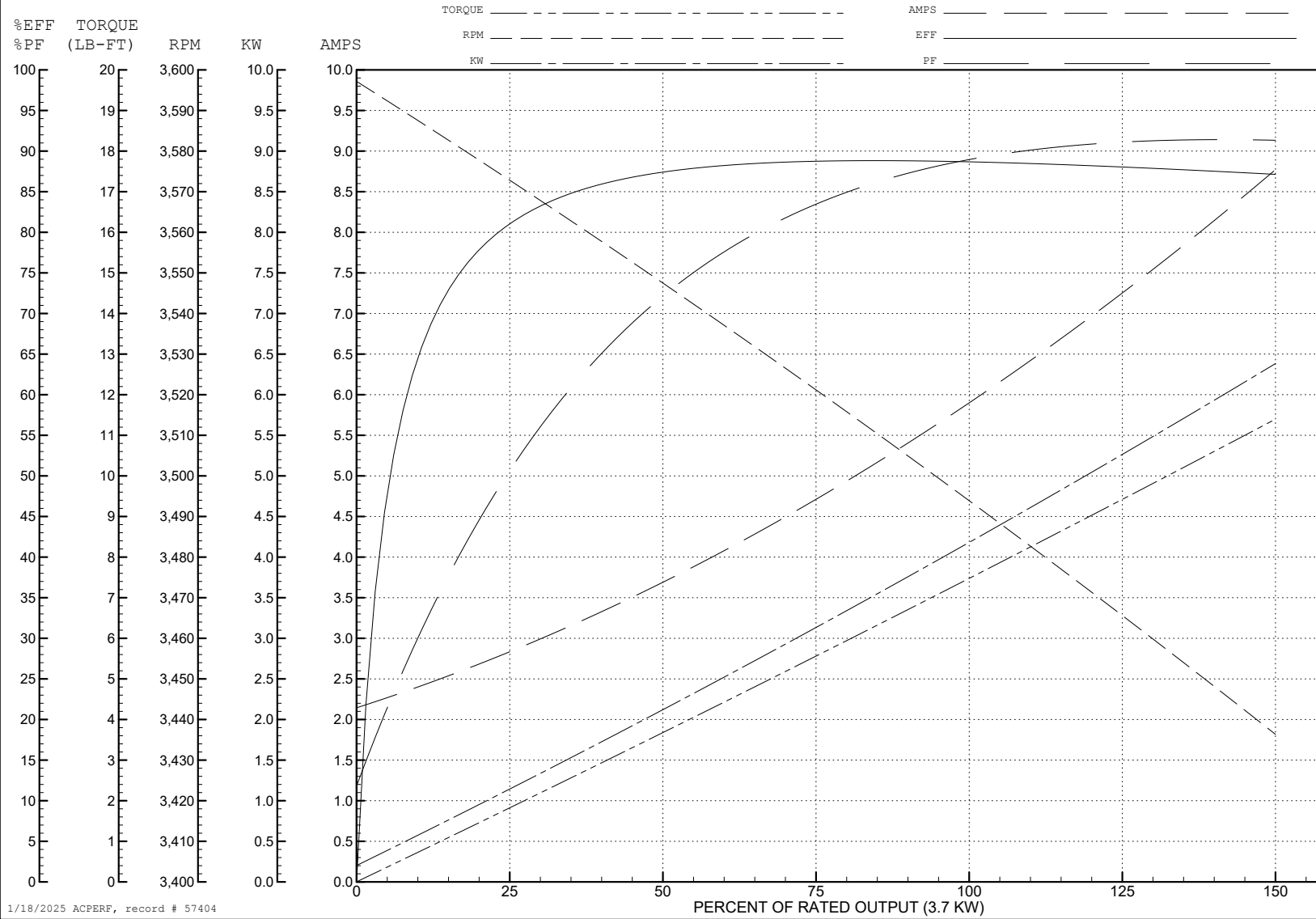
ABB Motors and Mechanical Inc.

WINDING # 36WGT202

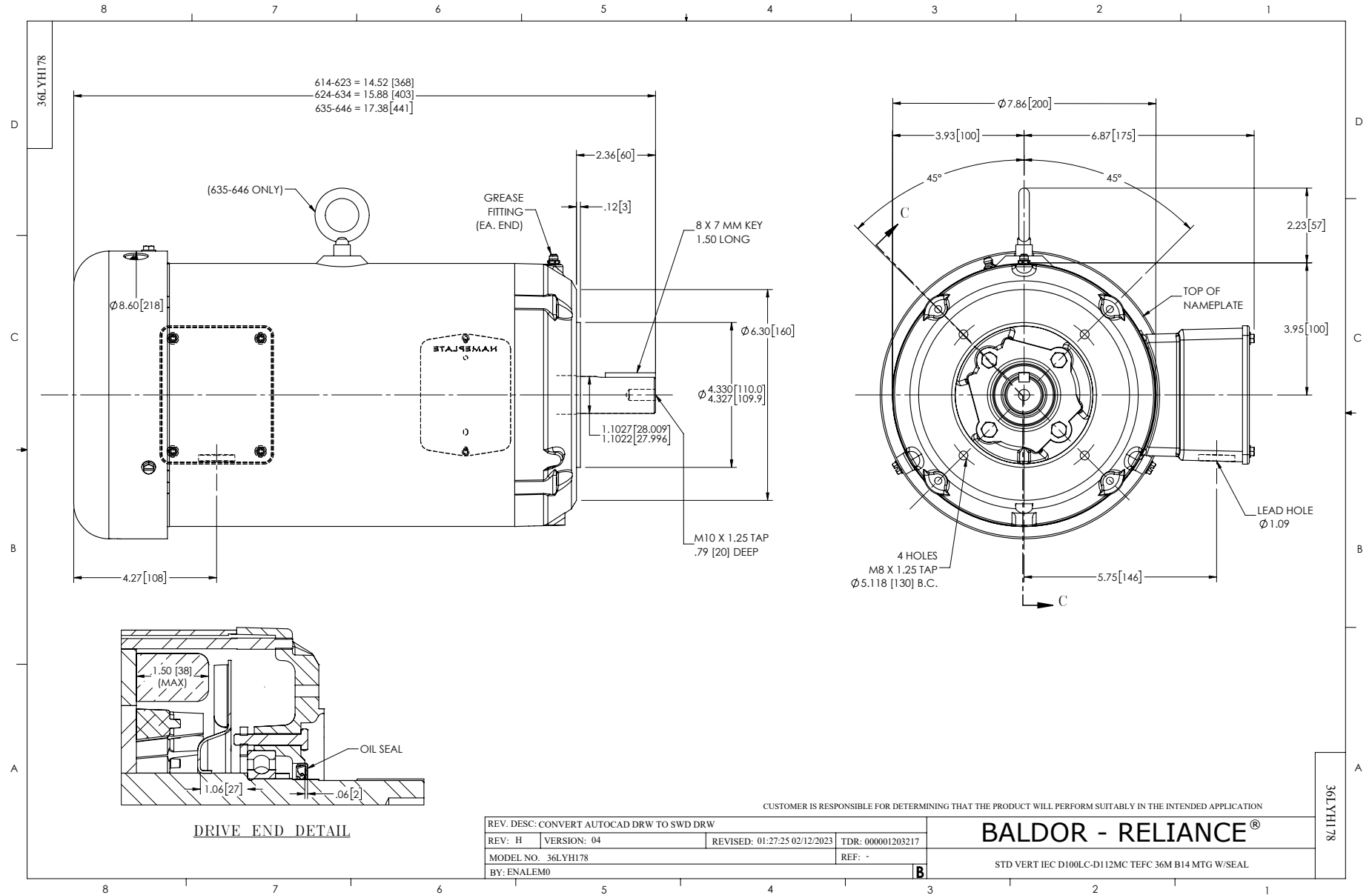
3.7 KW 3 PH 60 HZ 3450 RPM 460 V 3634M

Typical performance - not guaranteed values.

TORQUES (LB-FT): PO=45.7 PU=31 LR=38.1 LRA=36.4

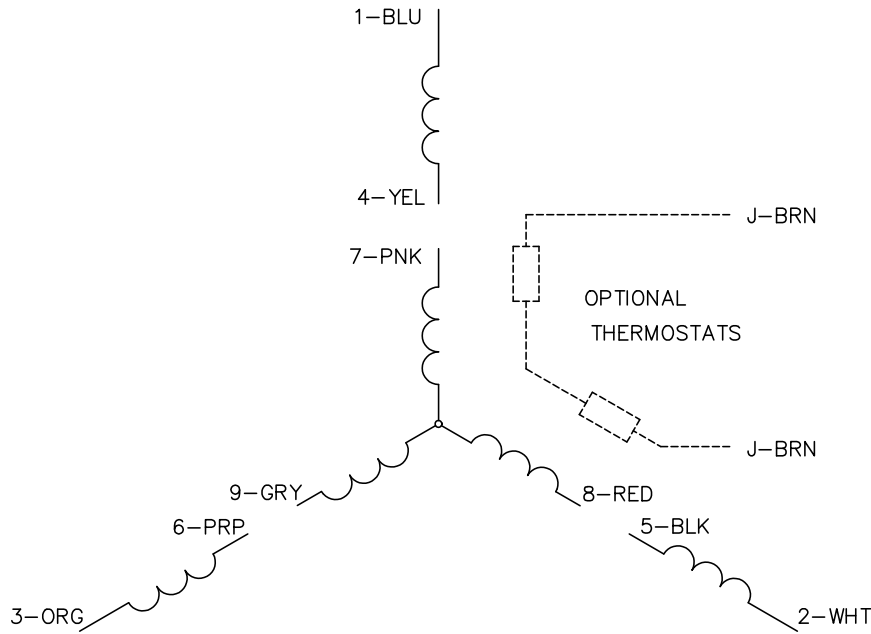


1/18/2025 ACPERF, record # 57404

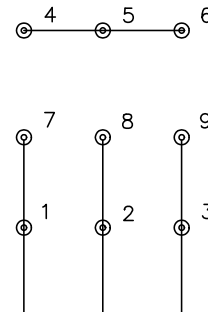




CD0005

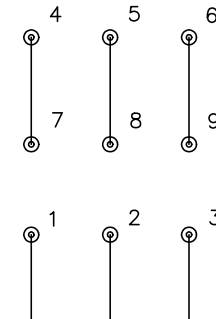


LOW VOLTAGE  
(2Y)



LINE

HIGH VOLTAGE  
(1Y)



LINE

NOTES:

1. INTERCHANGE ANY TWO LINE LEADS TO REVERSE ROTATION.
2. OPTIONAL THERMOSTATS ARE PROVIDED WHEN SPECIFIED.
3. ACTUAL NUMBER OF INTERNAL PARALLEL CIRCUITS MAY BE A MULTIPLE OF THOSE SHOWN ABOVE.
4. LEAD COLORS ARE OPTIONAL. LEADS MUST ALWAYS BE NUMBERED AS SHOWN.

CD0005

REV. DESC: REVISE TO SHOW OPTIONAL COLORS			
REV. LTR: E	BY: JLP	REVISED: 01/19/99 10:15	TDR: 0171435
S00000		FILE: AAA00005140	MDL: -
		MTL: -	

**BALDOR ELECTRIC Co.**

3PH, DV, 9 LEADS