

BALDOR • RELIANCE

Customer information packet

EMVM3559C

2.2KW, 3450RPM, 3PH, 60HZ, D90LC, 3532M, TEFC

Class - None

Division - Not Applicable

Specifications

Enclosure	TEFC
Frame	D90LC
Frame Material	Steel
Frequency	60.00 Hz
Haz Area Class and Group	None
Haz Area Division	Not Applicable
Motor Letter Type	Three Phase
Output @ Frequency	2.200 KW @ 60 HZ
Phase	3
Synchronous Speed @ Frequency	3600 RPM @ 60 HZ
Voltage @ Frequency	208.0 V @ 60 HZ 230.0 V @ 60 HZ 460.0 V @ 60 HZ
Agency Approvals	CSA EEV CSA UR
Ambient Temperature	40 °C
Auxillary Box	No Auxillary Box
Auxillary Box Lead Termination	None
Base Indicator	No Mounting
Bearing Grease Type	Polyrex EM (-20F +300F)
Blower	None
Current @ Voltage	3.600 A @ 460.0 V 7.200 A @ 230.0 V 7.900 A @ 208.0 V
Design Code	B
Drip Cover	No Drip Cover
Duty Rating	CONT
Efficiency @ 100% Load	86.5 %
Electrically Isolated Bearing	Not Electrically Isolated
Feedback Device	NO FEEDBACK
Frame Prefix	D

Part detail

Revision	M
Type	AC
Mech. spec.	35S714
Base	
Status	PRD/A
Elec. spec.	35WGQ060
Layout	35LYS714
Eff. date	04-30-2024
CD Diagram	CD0005
Poles	02
Leads	9#18
Proprietary	False
Created date	05-06-2015

Front Face Code	Standard
Front Shaft Indicator	None
Heater Indicator	No Heater
High Voltage Full Load Amps	3.6 a
Insulation Class	F
Inverter Code	Inverter Ready
KVA Code	L
Lifting Lugs	No Lifting Lugs
Locked Bearing Indicator	Locked Bearing
Motor Lead Exit	Ko Box
Motor Lead Quantity/Wire Size	9 @ 18 AWG
Motor Lead Termination	Flying Leads
Motor Standards	IEC
Motor Type	3532M
Mounting Arrangement	B14
Number of Poles	2
Overall Length	14.63 IN
Power Factor	92
Product Family	General Purpose
Pulley End Bearing Type	Ball
Pulley Face Code	C-Face
Pulley Shaft Indicator	Tapped & Key
Rodent Screen	None
RoHS Status	ROHS COMPLIANT
Service Factor	1.15
Shaft Diameter	0.945 IN
Shaft Extension Location	Pulley End
Shaft Ground Indicator	No Shaft Grounding
Shaft Rotation	Reversible
Shaft Slinger Indicator	No Slinger
Speed	3450 rpm
Speed Code	Single Speed
Starting Method	Direct on line
Thermal Device - Bearing	None

Thermal Device - Winding	None
Vibration Sensor Indicator	No Vibration Sensor
Winding Thermal 1	None
Winding Thermal 2	None

Nameplate

NP3386L					
CAT.NO.	EMVM3559C				
SPEC.	35S714Q060G2				
IEC FRAME	D90SC,LC	KW	2.2		
VOLTS	230/460				
AMP	7.2/3.6				
RPM	3450	ENCL	TEFC		
HZ	60	PH	3	CL	F
SER.F.	1.15	DES	B	CODE	L
NEMA-NOM-EFF	86.5	I.P.	44		
RATING	40C AMB-CONT				
CC	010A	USABLE AT 208V		N/A	
DE	6206	ODE	6203		
SER. #					

AC Induction Motor Performance Data

Record # 61529

Typical performance - not guaranteed values

Winding: 35WGQ060-R022		Type: 3532M		Enclosure: TEFC	
Nameplate Data			460 V, 60 Hz: High Voltage Connection		
Rated Output (KW)	2.2	Full Load Torque	4.61 LB-FT		
Volts	230/460	Start Configuration	direct on line		
Full Load Amps	7.2/3.6	Breakdown Torque	19.9 LB-FT		
R.P.M.	3450	Pull-up Torque	11.9 LB-FT		
Hz	60 Phase	3	Locked-rotor Torque	18.8 LB-FT	
NEMA Design Code	B KVA Code	L	Starting Current	33.1 A	
Service Factor (S.F.)		1.15	No-load Current	1.17 A	
NEMA Nom. Eff.	86.5 Power Factor	92	Line-line Res. @ 25°C	4.7916 Ω	
Rating - Duty		40C AMB-CONT	Temp. Rise @ Rated Load	57°C	
S.F. Amps			Temp. Rise @ S.F. Load	72°C	

Load Characteristics 460 V, 60 Hz, 2.2 KW

% of Rated Load	25	50	75	100	125	150	S.F.
Power Factor	62	81	88	92	93	94	93
Efficiency	83.7	87.9	88.2	87.2	85.6	83.5	86.2
Speed	3562.2	3530.9	3497.8	3462.5	3420.8	3375.4	3437
Line amperes	1.5	2.08	2.79	3.57	4.46	5.44	4.1

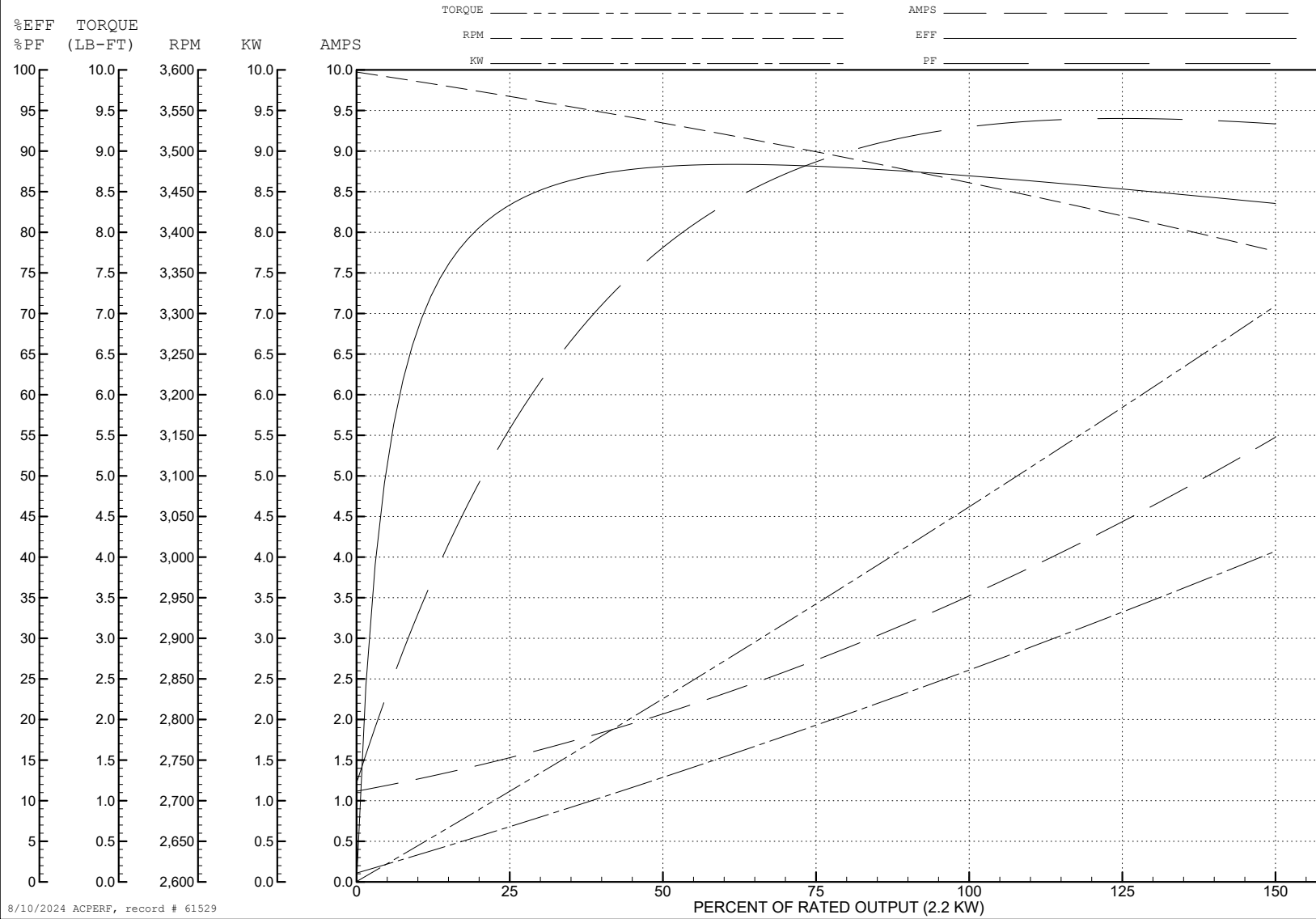
ABB Motors and Mechanical Inc.

WINDING # 35WGQ060

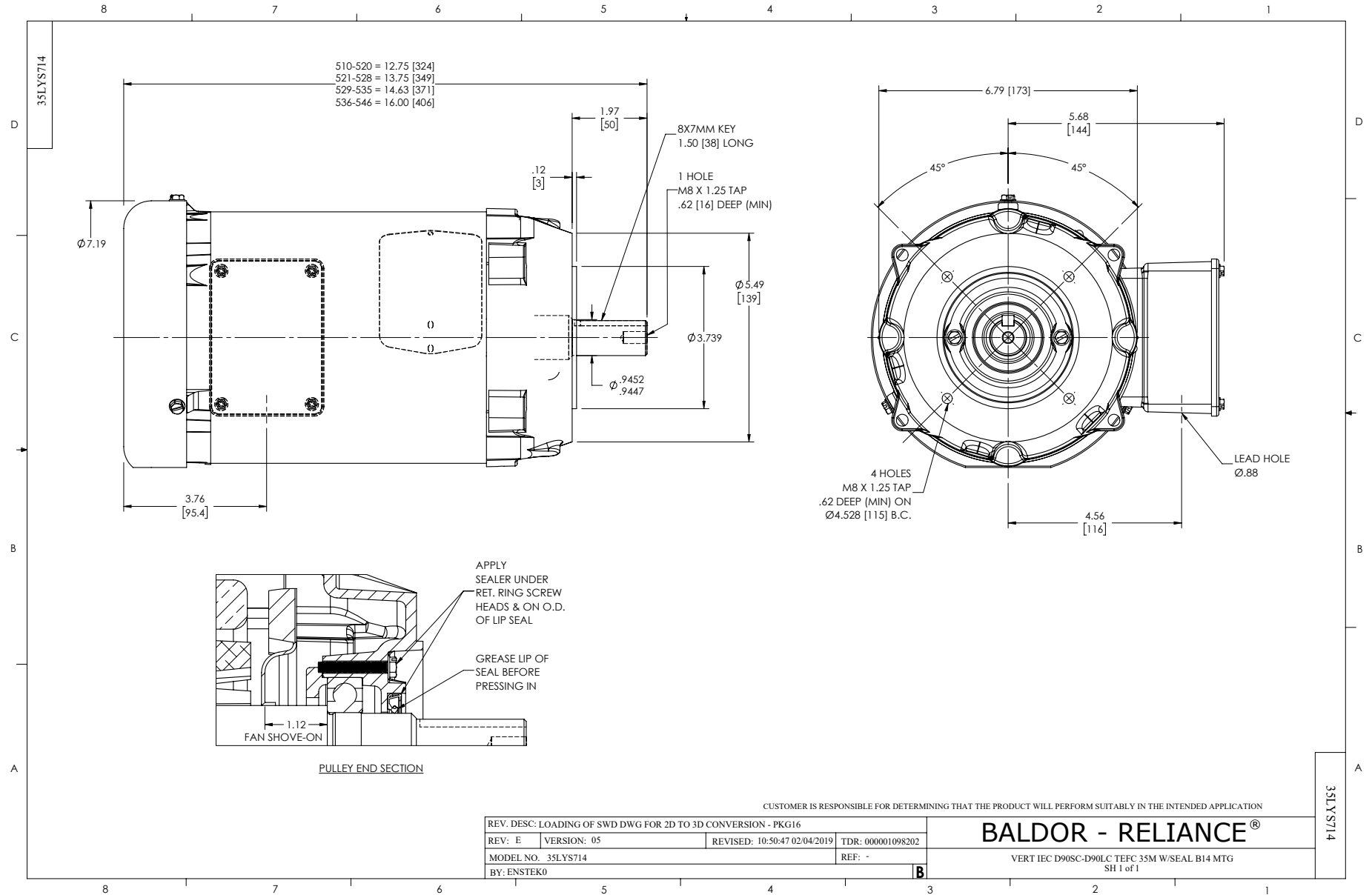
Typical performance - not guaranteed values.

2.2 KW 3 PH 60 HZ 3450 RPM 460 V 3532M

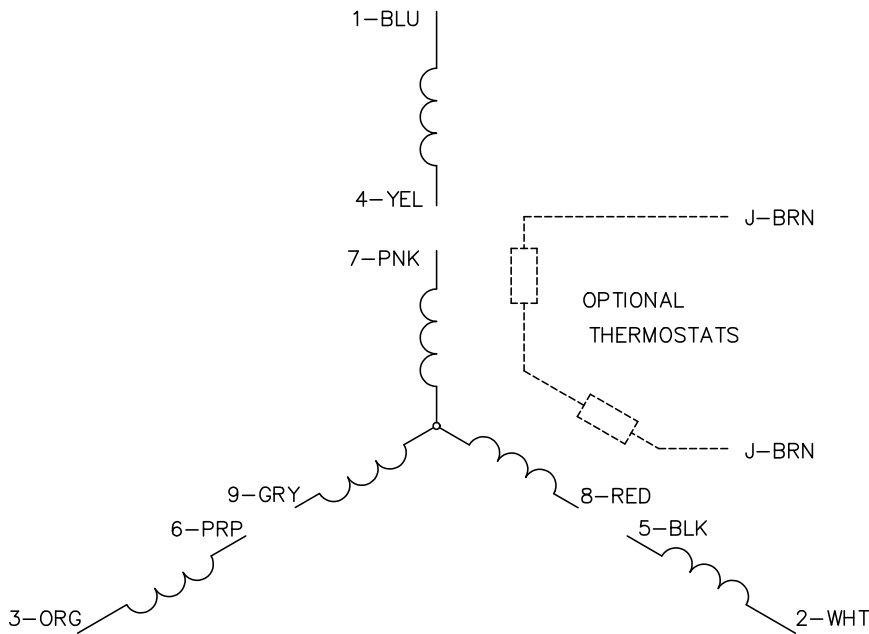
TORQUES (LB-FT): PO=19.9 PU=11.9 LR=18.8 LRA=33.1



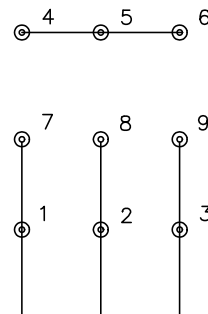
8/10/2024 ACPERF, record # 61529



CD0005

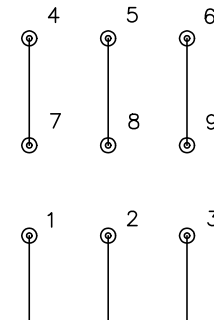


LOW VOLTAGE
(2Y)



LINE

HIGH VOLTAGE
(1Y)



LINE

NOTES:

1. INTERCHANGE ANY TWO LINE LEADS TO REVERSE ROTATION.
2. OPTIONAL THERMOSTATS ARE PROVIDED WHEN SPECIFIED.
3. ACTUAL NUMBER OF INTERNAL PARALLEL CIRCUITS MAY BE A MULTIPLE OF THOSE SHOWN ABOVE.
4. LEAD COLORS ARE OPTIONAL. LEADS MUST ALWAYS BE NUMBERED AS SHOWN.

CD0005

REV. DESC: REVISE TO SHOW OPTIONAL COLORS			
REV. LTR: E	BY: JLP	REVISED: 01/19/99 10:15	TDR: 0171435
S00000		FILE: AAA00005140	MDL: -
		MTL: -	

BALDOR ELECTRIC Co.

3PH, DV, 9 LEADS