

BALDOR • RELIANCE

Customer information packet

EMM3711

7.5KW, 3490RPM, 3PH, 60HZ, D132S, 3728M, TEFC

Class - None

Division - Not Applicable

Specifications

Enclosure	TEFC
Frame	D132S
Frame Material	Steel
Frequency	60.00 Hz
Haz Area Class and Group	None
Haz Area Division	Not Applicable
Motor Letter Type	Three Phase
Output @ Frequency	7.500 KW @ 60 HZ
Phase	3
Synchronous Speed @ Frequency	3600 RPM @ 60 HZ
Voltage @ Frequency	230.0 V @ 60 HZ 460.0 V @ 60 HZ
Agency Approvals	C UR US
Ambient Temperature	40 °C
Auxiliary Box	NO AUXILLARY BOX
Auxiliary Box Lead Termination	None
Base Indicator	Rigid
Bearing Grease Type	Polyrex EM (-20F +300F)
Blower	None
Current @ Voltage	12.000 A @ 460.0 V 24.100 A @ 230.0 V
Design Code	B
Drip Cover	No Drip Cover
Duty Rating	CONT
Efficiency @ 100% Load	90.2 %
Electrically Isolated Bearing	Not Electrically Isolated
Feedback Device	NO FEEDBACK
Frame Prefix	D
Front Shaft Indicator	Tapped & Key
Heater Indicator	No Heater
High Voltage Full Load Amps	12.0 a
Insulation Class	F

Part detail

Revision	A
Type	AC
Mech. spec.	37G816
Base	
Status	PRD/A
Elec. spec.	37WGZ712
Layout	37LYG816
Eff. date	03-30-2026
CD Diagram	CD0005
Poles	02
Leads	9#14
Proprietary	False
Created date	11-07-2025

Inverter Code	Inverter Ready
KVA Code	G
Lifting Lugs	Standard Lifting Lugs
Locked Bearing Indicator	No Locked Bearing
Motor Lead Quantity/Wire Size	9 @ 14 AWG
Motor Lead Termination	Flying Leads
Motor Standards	IEC
Motor Type	3728M
Mounting Arrangement	B3
Number of Poles	2
Overall Length	17.66 IN
Power Factor	85
Product Family	General Purpose
Pulley End Bearing Type	Ball
Pulley Face Code	Standard
Pulley Shaft Indicator	Standard
Rodent Screen	None
RoHS Status	ROHS COMPLIANT
Service Factor	1.15
Shaft Diameter	1.497 IN
Shaft Ground Indicator	No Shaft Grounding
Shaft Rotation	Reversible
Shaft Slinger Indicator	Shaft Slinger
Speed	3490 rpm
Speed Code	Single Speed
Starting Method	Direct on line
Thermal Device - Bearing	None
Thermal Device - Winding	None
Vibration Sensor Indicator	No Vibration Sensor
Winding Thermal 1	None
Winding Thermal 2	None

Nameplate

NP1159L					
CAT.NO.	EMM3711				
SPEC.	37G816Z712				
IEC FRAME	D132S	KW	7.5		
VOLTS	230/460				
AMP	24.1/12				
RPM	3490	ENCL	TEFC		
HZ	60	PH	3	CL	F
SER.F.	1.15	DES	B	CODE	G
NEMA-NOM-EFF	90.2	I.P.	54		
RATING	40C AMB-CONT				
CC	010A				
DE	6208	ODE	6206		
SER. #	SFA 27.6/13.8				

AC Induction Motor Performance Data

Record # 115764

Typical performance - not guaranteed values

Winding: 37WGZ712-R001		Type: 3728M		Enclosure: TEFC	
Nameplate Data			460 V, 60 Hz: High Voltage Connection		
Rated Output (HP)	10	Full Load Torque	15 LB-FT		
Volts	230/460	Start Configuration	direct on line		
Full Load Amps	24.1/12	Breakdown Torque	58.7 LB-FT		
R.P.M.	3490	Pull-up Torque	24.8 LB-FT		
Hz	60 Phase	3	Locked-rotor Torque	27.4 LB-FT	
NEMA Design Code	B KVA Code	G	Starting Current	77.5 A	
Service Factor (S.F.)	1.15	No-load Current	4.12 A		
NEMA Nom. Eff.	90.2 Power Factor	85	Line-line Res. @ 25°C	1.0708 Ω	
Rating - Duty	40C AMB-CONT	Temp. Rise @ Rated Load	81°C		
S.F. Amps	27.6/13.8	Temp. Rise @ S.F. Load	104°C		
		Locked-rotor Power Factor	34.2		

Load Characteristics 460 V, 60 Hz, 10 HP

% of Rated Load	25	50	75	100	125	150	S.F.
Power Factor	52	75	83	87	88	89	88
Efficiency	88.3	91.6	91.6	90.6	89	87.1	89.6
Speed	3572.3	3544.9	3515.4	3482.5	3445.4	3404.5	3460
Line amperes	4.96	6.75	9.13	11.8	14.8	18.1	13.6

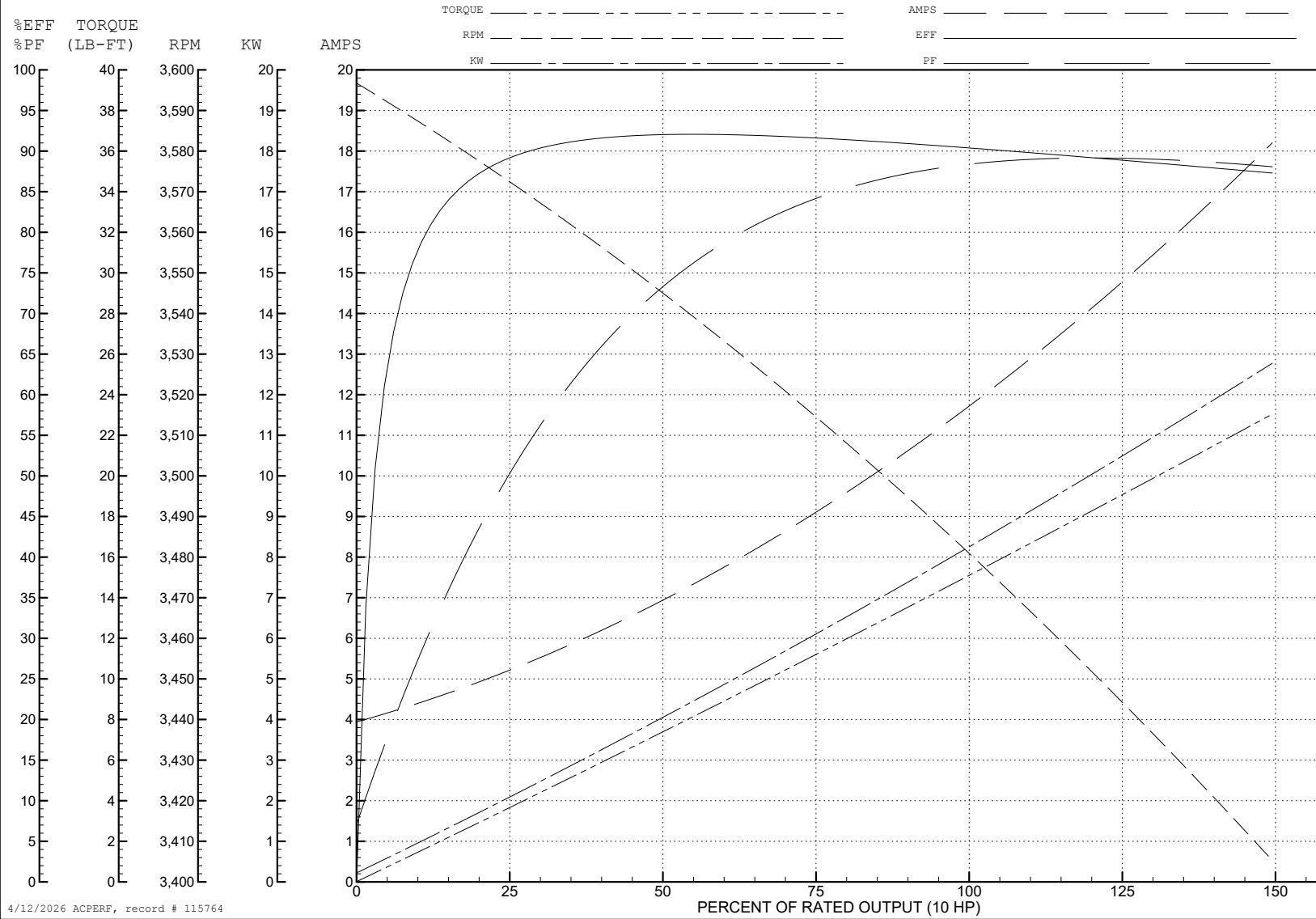
ABB Motors and Mechanical Inc.

WINDING # 37WGZ712

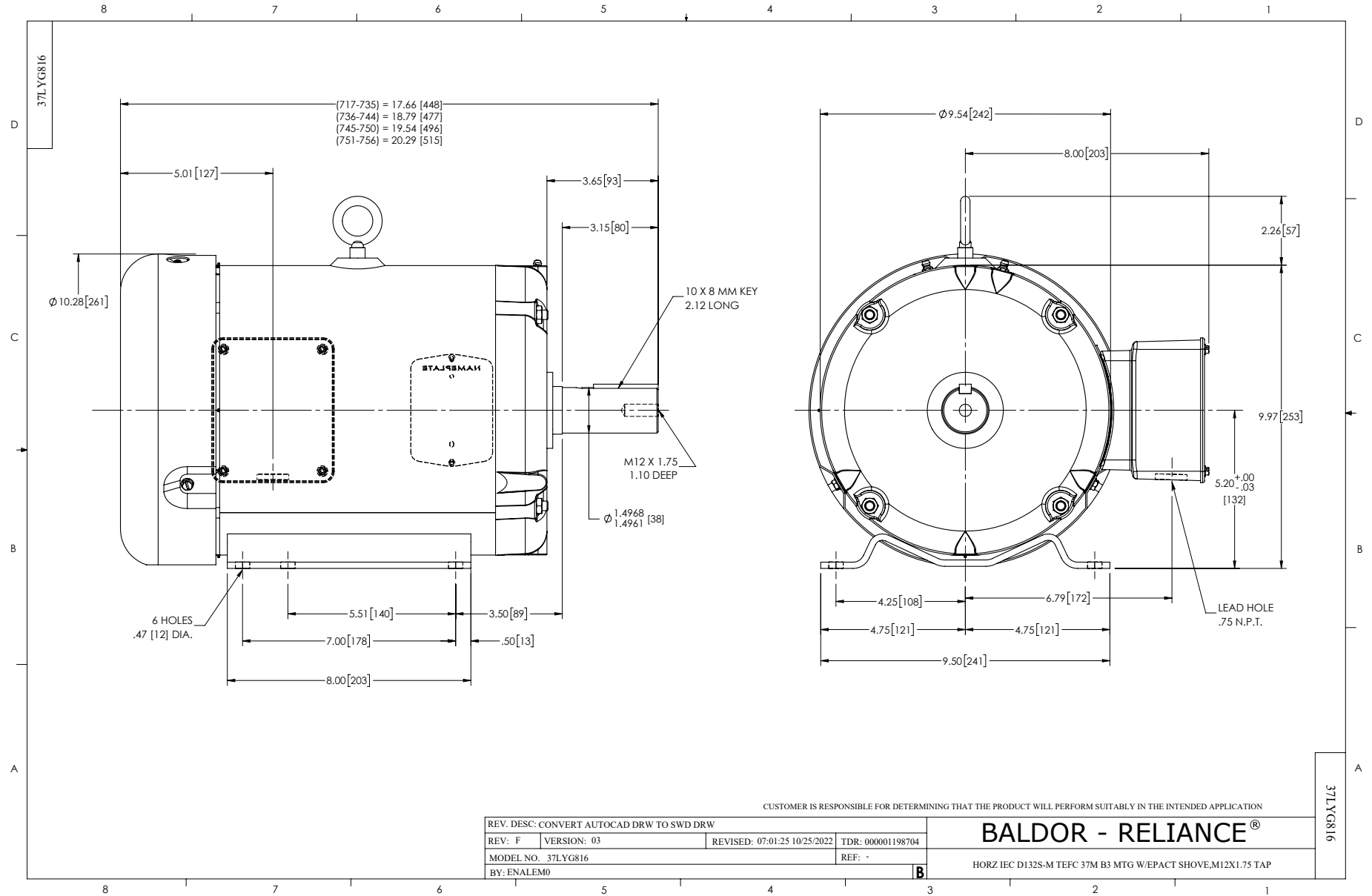
Typical performance - not guaranteed values.

10 HP 3 PH 60 HZ 3490 RPM 460 V 3728M

TORQUES (LB-FT): PO=58.7 PU=24.8 LR=27.4 LRA=77.5



4/12/2026 ACPERF, record # 115764



CD0005



LOW VOLTAGE (2Y)



LINE

HIGH VOLTAGE (1Y)



LINE

NOTES:

1. INTERCHANGE ANY TWO LINE LEADS TO REVERSE ROTATION.
2. OPTIONAL THERMOSTATS ARE PROVIDED WHEN SPECIFIED.
3. ACTUAL NUMBER OF INTERNAL PARALLEL CIRCUITS MAY BE A MULTIPLE OF THOSE SHOWN ABOVE.
4. LEAD COLORS ARE OPTIONAL. LEADS MUST ALWAYS BE NUMBERED AS SHOWN.

CD0005

REV. DESC: REVISE TO SHOW OPTIONAL COLORS			
REV. LTR: E	BY: JLP	REVISED: 01/19/99 10:15	TDR: 0171435
S00000		FILE: AAA00005140	MDL: -
		MTL: -	

BALDOR ELECTRIC Co.

3PH, DV, 9 LEADS