

BALDOR • RELIANCE

Customer information packet

EMM3709

5.5KW, 3520RPM, 3PH, 60HZ, D132S, 3728M, TEFC

Class - None

Division - Not Applicable

Specifications

Enclosure	TEFC
Frame	D132S
Frame Material	Steel
Frequency	60.00 Hz
Haz Area Class and Group	None
Haz Area Division	Not Applicable
Motor Letter Type	Three Phase
Output @ Frequency	5.500 KW @ 60 HZ
Phase	3
Synchronous Speed @ Frequency	3600 RPM @ 60 HZ
Voltage @ Frequency	230.0 V @ 60 HZ 460.0 V @ 60 HZ
Agency Approvals	CSA UR
Ambient Temperature	40 °C
Auxillary Box	No Auxillary Box
Auxillary Box Lead Termination	None
Base Indicator	Rigid
Bearing Grease Type	Polyrex EM (-20F +300F)
Blower	None
Current @ Voltage	18.000 A @ 230.0 V 19.000 A @ 208.0 V 9.000 A @ 460.0 V
Design Code	A
Drip Cover	No Drip Cover
Duty Rating	CONT
Efficiency @ 100% Load	89.5 %
Electrically Isolated Bearing	Not Electrically Isolated
Feedback Device	NO FEEDBACK
Frame Prefix	D
Front Shaft Indicator	None
Heater Indicator	No Heater

Part detail

Revision	B
Type	AC
Mech. spec.	37E617
Base	
Status	PRD/A
Elec. spec.	37WGL869
Layout	37LYE617
Eff. date	06-20-2024
CD Diagram	CD0005
Poles	02
Leads	9#14
Proprietary	False
Created date	01-28-2021

High Voltage Full Load Amps	9.0 a
Insulation Class	F
Inverter Code	Inverter Ready
KVA Code	J
Lifting Lugs	Standard Lifting Lugs
Locked Bearing Indicator	No Locked Bearing
Motor Lead Quantity/Wire Size	9 @ 14 AWG
Motor Lead Termination	Flying Leads
Motor Standards	IEC
Motor Type	3728M
Mounting Arrangement	B3
Number of Poles	2
Overall Length	17.66 IN
Power Factor	84
Product Family	General Purpose
Pulley End Bearing Type	Ball
Pulley Face Code	Standard
Pulley Shaft Indicator	Tapped & Key
Rodent Screen	None
Service Factor	1.15
Shaft Diameter	1.497 IN
Shaft Ground Indicator	No Shaft Grounding
Shaft Rotation	Reversible
Shaft Slinger Indicator	Shaft Slinger
Speed	3520 rpm
Speed Code	Single Speed
Starting Method	Direct on line
Thermal Device - Bearing	None
Thermal Device - Winding	None
Vibration Sensor Indicator	No Vibration Sensor
Winding Thermal 1	None
Winding Thermal 2	None

Nameplate

NP1159L			
CAT.NO.	EMM3709		
SPEC.	37E617L869G1		
IEC FRAME	D132S	KW	5.5
VOLTS	230/460		
AMP	18/9		
RPM	3520	ENCL	TEFC
HZ	60	PH	3 CL F
SER.F.	1.15	DES	A CODE J
NEMA-NOM-EFF	89.5	I.P.	54
RATING	40C AMB-CONT		
CC	010A		
DE	6208	ODE	6206
SER. #			

AC Induction Motor Performance Data

Record # 86825

Preliminary Data Sheet

Winding: 37WGL869-R007		Type: 3728M		Enclosure: TEFC	
Nameplate Data			460 V, 60 Hz: High Voltage Connection		
Rated Output (KW)	5.5	Full Load Torque	11.2 LB-FT		
Volts	230/460	Start Configuration	direct on line		
Full Load Amps	18/9	Breakdown Torque	40.3 LB-FT		
R.P.M.	3520	Pull-up Torque	19.7 LB-FT		
Hz	60 Phase	3	Locked-rotor Torque	21.8 LB-FT	
NEMA Design Code	A KVA Code	J	Starting Current	68.4 A	
Service Factor (S.F.)	1.15	No-load Current	3.52 A		
NEMA Nom. Eff.	89.5 Power Factor	84	Line-line Res. @ 25°C	1.19 Ω	
Rating - Duty	40C AMB-CONT	Temp. Rise @ Rated Load	50°C		
S.F. Amps	20/10	Temp. Rise @ S.F. Load	63°C		
		Locked-rotor Power Factor	38.1		
		Rotor inertia	0.255 lb-ft ²		

Load Characteristics 460 V, 60 Hz, 5.5 KW

% of Rated Load	25	50	75	100	125	150	S.F.
Power Factor	49	71	81	86	88	89	87
Efficiency	83.9	89.7	91	90.9	90.2	89.2	90.3
Speed	3580	3560	3540	3518	3494	3468	3500
Line amperes	4.1	5.4	7.06	8.96	11	13.2	10.2

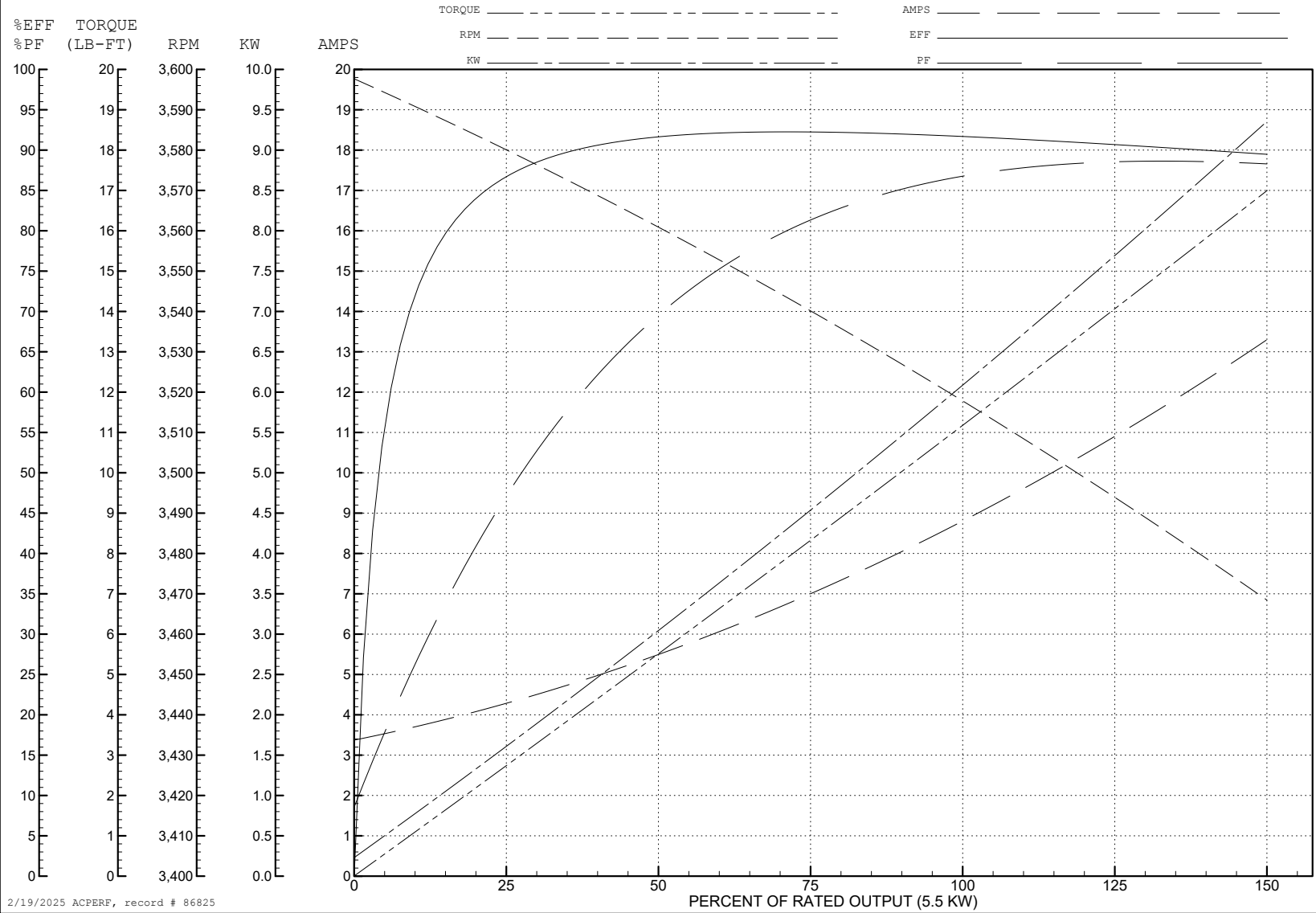
ABB Motors and Mechanical Inc.

WINDING # 37WGL869

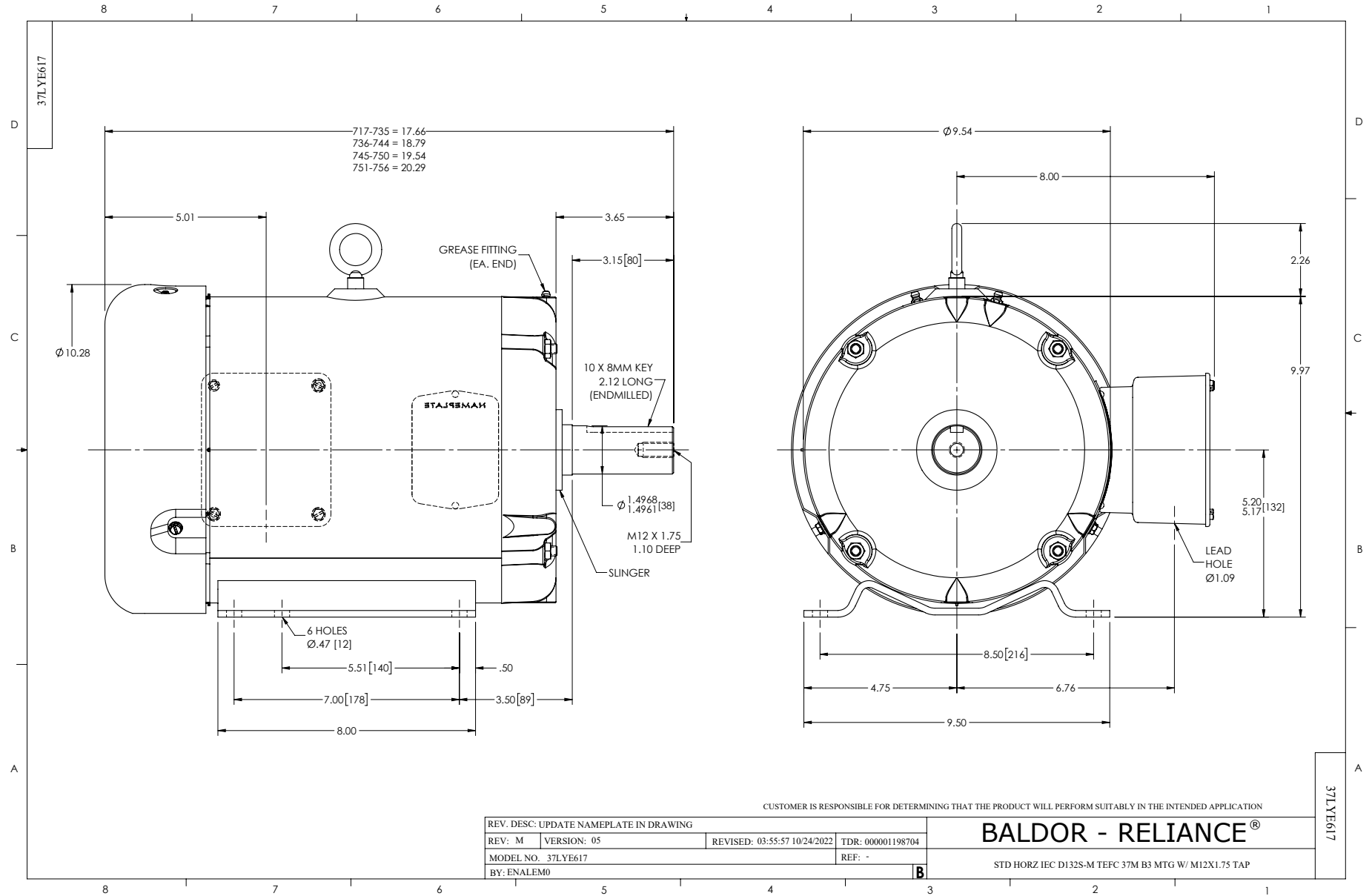
5.5 KW 3 PH 60 HZ 3520 RPM 460 V 3728M

Typical performance - not guaranteed values.

TORQUES (LB-FT): PO=40.3 PU=19.7 LR=21.8 LRA=68.4



2/19/2025 ACPERF, record # 86825



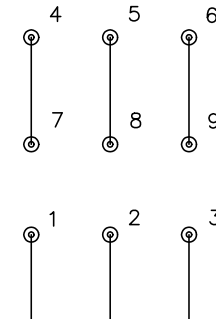
CD0005



LOW VOLTAGE
(2Y)



HIGH VOLTAGE
(1Y)



NOTES:

1. INTERCHANGE ANY TWO LINE LEADS TO REVERSE ROTATION.
2. OPTIONAL THERMOSTATS ARE PROVIDED WHEN SPECIFIED.
3. ACTUAL NUMBER OF INTERNAL PARALLEL CIRCUITS MAY BE A MULTIPLE OF THOSE SHOWN ABOVE.
4. LEAD COLORS ARE OPTIONAL. LEADS MUST ALWAYS BE NUMBERED AS SHOWN.

CD0005

REV. DESC: REVISE TO SHOW OPTIONAL COLORS			
REV. LTR: E	BY: JLP	REVISED: 01/19/99 10:15	TDR: 0171435
S00000		FILE: AAA00005140	MDL: -
		MTL: -	

BALDOR ELECTRIC Co.

3PH, DV, 9 LEADS