



---

# Customer information packet

## EMM2334

15KW, 1770RPM, 3PH, 60HZ, D160L, 0960M, TEFC, F

Class - None

Division - Not Applicable

## Specifications

Enclosure	TEFC
Frame	D160L
Frame Material	Iron
Frequency	60.00 Hz
Haz Area Class and Group	None
Haz Area Division	Not Applicable
Motor Letter Type	Three Phase
Output @ Frequency	15.000 KW @ 60 HZ
Phase	3
Synchronous Speed @ Frequency	1800 RPM @ 60 HZ
Voltage @ Frequency	230.0 V @ 60 HZ 460.0 V @ 60 HZ
Agency Approvals	UR CSA
Ambient Temperature	40 °C
Auxillary Box	No Auxillary Box
Auxillary Box Lead Termination	None
Base Indicator	Rigid
Bearing Grease Type	Polyrex EM (-20F +300F)
Blower	None
Current @ Voltage	25.000 A @ 460.0 V 50.000 A @ 230.0 V 52.000 A @ 208.0 V
Design Code	A
Drip Cover	No Drip Cover
Duty Rating	CONT
Efficiency @ 100% Load	93.0 %
Electrically Isolated Bearing	Not Electrically Isolated
Feedback Device	NO FEEDBACK
Frame Prefix	D
Front Face Code	Standard
Front Shaft Indicator	None

## Part detail

Revision	AB
Type	AC
Mech. spec.	09E142
Base	
Status	PRD/A
Elec. spec.	09WGZ571
Layout	09LYE142
Eff. date	06-20-2024
CD Diagram	CD0180
Poles	04
Leads	9#10
Proprietary	False
Created date	03-22-2010

Heater Indicator	No Heater
High Voltage Full Load Amps	25.0 a
Insulation Class	F
Inverter Code	Not Inverter
KVA Code	H
Lifting Lugs	Standard Lifting Lugs
Locked Bearing Indicator	Locked Bearing
Motor Lead Exit	Ko Box
Motor Lead Quantity/Wire Size	9 @ 10 AWG
Motor Lead Termination	Flying Leads
Motor Standards	IEC
Motor Type	0960M
Mounting Arrangement	B3
Number of Poles	4
Overall Length	23.63 IN
Power Factor	81
Product Family	General Purpose
Pulley End Bearing Type	Ball
Pulley Face Code	Standard
Pulley Shaft Indicator	Standard
Rodent Screen	None
Service Factor	1.15
Shaft Diameter	1.654 IN
Shaft Extension Location	Pulley End
Shaft Ground Indicator	No Shaft Grounding
Shaft Rotation	Reversible
Shaft Slinger Indicator	Shaft Slinger
Speed	1770 rpm
Speed Code	Single Speed
Starting Method	Direct on line
Thermal Device - Bearing	None
Thermal Device - Winding	None
Vibration Sensor Indicator	No Vibration Sensor
Winding Thermal 1	None

**Winding Thermal 2**

**None**

---

**Nameplate**

<b>NP1159L</b>									
<b>CAT.NO.</b>	EMM2334								
<b>SPEC.</b>	09E142Z571G1								
<b>IEC FRAME</b>	D160L	<b>KW</b>	15						
<b>VOLTS</b>	230/460								
<b>AMP</b>	50/25								
<b>RPM</b>	1770	<b>ENCL</b>	TEFC						
<b>HZ</b>	60	<b>PH</b>	3	<b>CL</b>	F				
<b>SER.F.</b>	1.15	<b>DES</b>	A	<b>CODE</b>	H				
<b>NEMA-NOM-EFF</b>	93	<b>I.P.</b>	54						
<b>RATING</b>	40C AMB-CONT								
<b>CC</b>	010A								
<b>DE</b>	6309	<b>ODE</b>	6208						
<b>SER. #</b>									

**AC Induction Motor Performance Data**

Record # 30679

Typical performance - not guaranteed values

<b>Winding: 09WZ571-R001</b>		<b>Type: 0960M</b>		<b>Enclosure: TEFC</b>	
<b>Nameplate Data</b>			<b>460 V, 60 Hz: High Voltage Connection</b>		
<b>Rated Output (KW)</b>	15	<b>Full Load Torque</b>	59.1 LB-FT		
<b>Volts</b>	230/460	<b>Start Configuration</b>	direct on line		
<b>Full Load Amps</b>	50/25	<b>Breakdown Torque</b>	218 LB-FT		
<b>R.P.M.</b>	1770	<b>Pull-up Torque</b>	76.9 LB-FT		
<b>Hz</b>	60 <b>Phase</b>	3	<b>Locked-rotor Torque</b>	118 LB-FT	
<b>NEMA Design Code</b>	A <b>KVA Code</b>	H	<b>Starting Current</b>	167 A	
<b>Service Factor (S.F.)</b>	1.15	<b>No-load Current</b>	11.3 A		
<b>NEMA Nom. Eff.</b>	93 <b>Power Factor</b>	81	<b>Line-line Res. @ 25°C</b>	0.335 Ω	
<b>Rating - Duty</b>	40C AMB-CONT	<b>Temp. Rise @ Rated Load</b>	61°C		
<b>S.F. Amps</b>		<b>Temp. Rise @ S.F. Load</b>	73°C		
		<b>Locked-rotor Power Factor</b>	31.8		
		<b>Rotor inertia</b>	2.62 LB-FT <sup>2</sup>		

**Load Characteristics 460 V, 60 Hz, 15 KW**

<b>% of Rated Load</b>	<b>25</b>	<b>50</b>	<b>75</b>	<b>100</b>	<b>125</b>	<b>150</b>	<b>S.F.</b>
<b>Power Factor</b>	41	64	75	81	86	85	84
<b>Efficiency</b>	87.3	92	93	93.1	92.8	91.6	92.9
<b>Speed</b>	1792	1785	1779	1772	1765	1754	1768
<b>Line amperes</b>	12.8	15.8	20.1	24.7	29.6	37.2	27.6

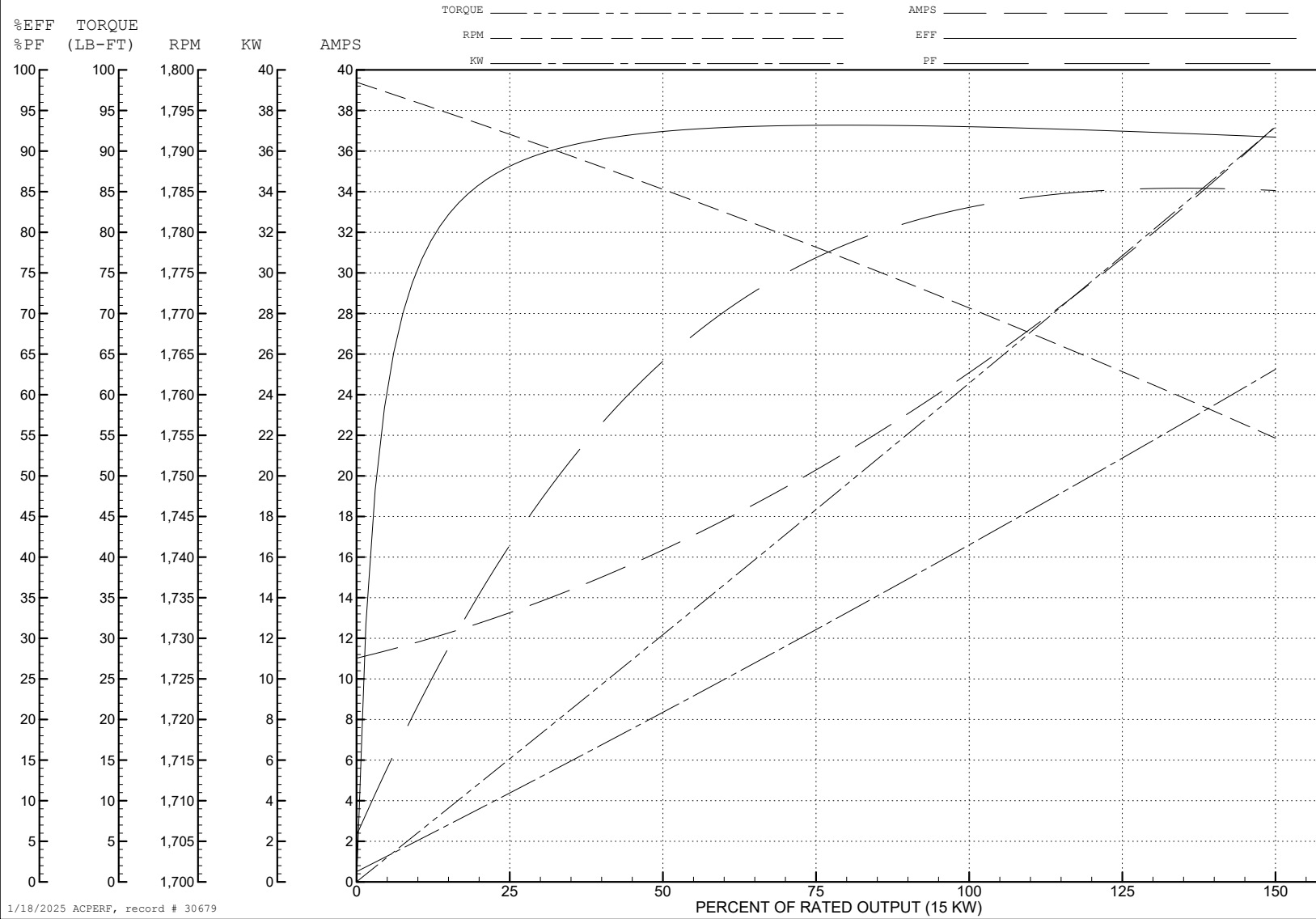
ABB Motors and Mechanical Inc.

WINDING # 09WGZ571

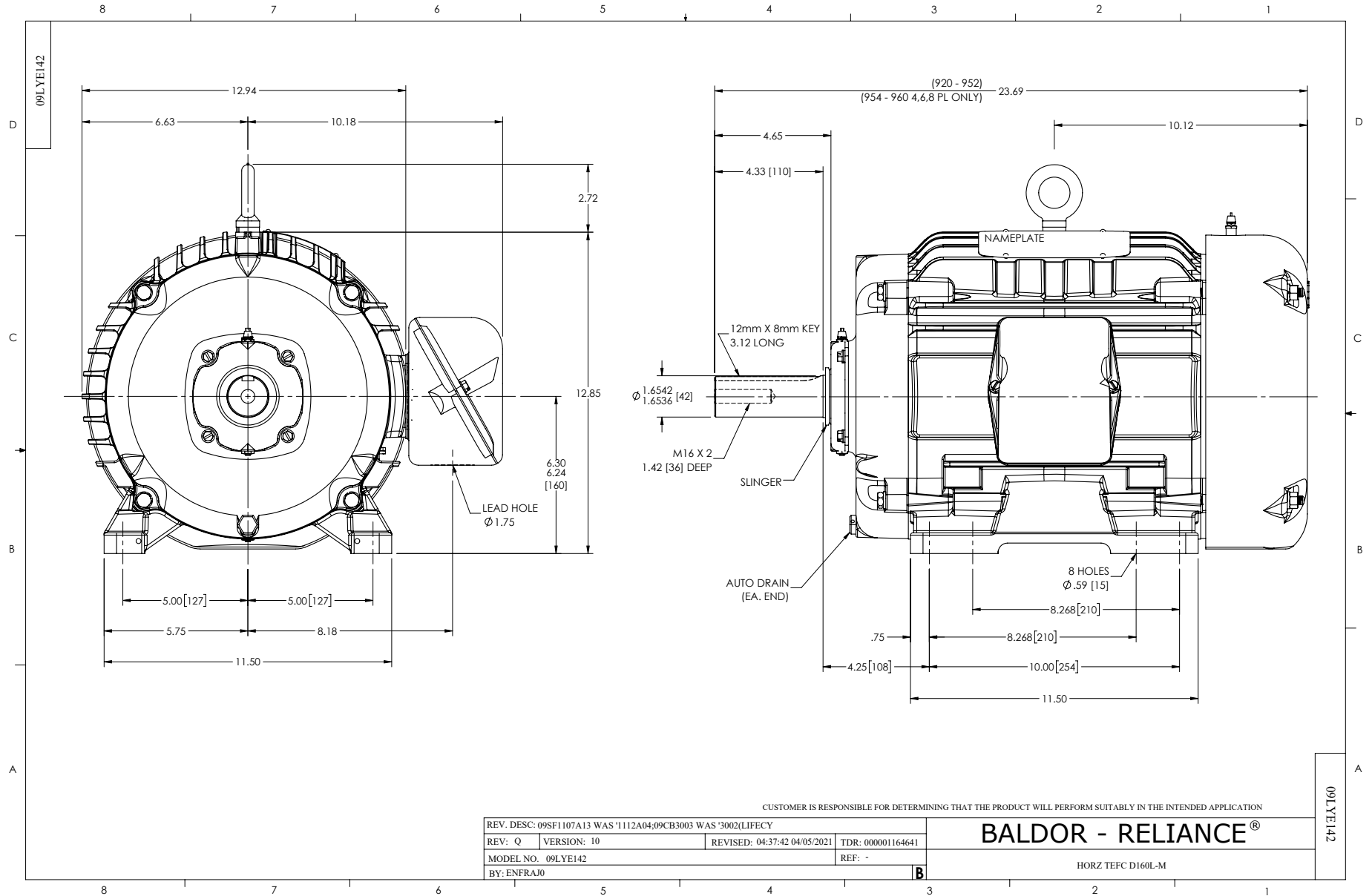
Typical performance - not guaranteed values.

15 KW 3 PH 60 HZ 1770 RPM 460 V 0960M

TORQUES (LB-FT): PO=218 PU=76.9 LR=118 LRA=167

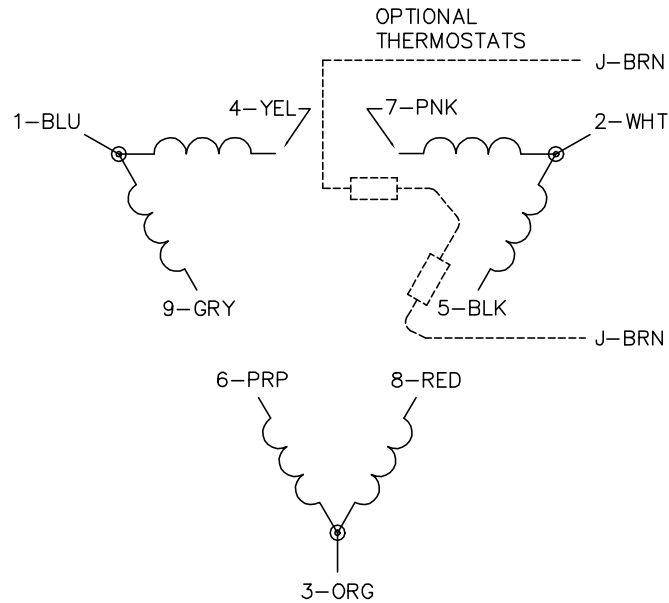


1/18/2025 ACPERF, record # 30679

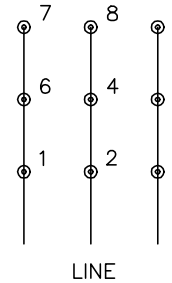




CD0180



LOW VOLTAGE  
(2D)



HIGH VOLTAGE  
(1D)



NOTES:

1. INTERCHANGE ANY TWO LINE LEADS TO REVERSE ROTATION.
2. OPTIONAL THERMOSTATS ARE PROVIDED WHEN SPECIFIED.
3. ACTUAL NUMBER OF INTERNAL PARALLEL CIRCUITS MAY BE A MULTIPLE OF THOSE SHOWN ABOVE.
4. LEAD COLORS ARE OPTIONAL. LEADS MUST ALWAYS BE NUMBERED AS SHOWN.

CD0180

REV. DESC: ADD CLASS CONN00000007		
REV. LTR: D	VERSION: 01	TDR: 000001099922
FILE: \AAA\00005\148	REVISED: 10: 25: 29 02/19/2019	BY: ENBRIRO
MTL: -	© □	

**BALDOR - RELIANCE®**

3PH, DV, 9 LEADS, DELTA CONNECTION

SH 1 of 1