



Customer information packet

EMM2333

11KW, 1765RPM, 3PH, 60HZ, D160M, 0944M, TEFC, F

Class - None

Division - Not Applicable

Specifications

| | |
|--------------------------------|--|
| Enclosure | TEFC |
| Frame | D160M |
| Frame Material | Iron |
| Frequency | 60.00 Hz |
| Motor Letter Type | Three Phase |
| Output @ Frequency | 11.000 KW @ 60 HZ |
| Phase | 3 |
| Synchronous Speed @ Frequency | 1800 RPM @ 60 HZ |
| Voltage @ Frequency | 230.0 V @ 60 HZ 460.0 V @ 60 HZ |
| XP Class and Group | None |
| XP Division | Not Applicable |
| Agency Approvals | CSA UR |
| Ambient Temperature | 40 °C |
| Auxillary Box | No Auxillary Box |
| Auxillary Box Lead Termination | None |
| Base Indicator | Rigid |
| Bearing Grease Type | Polyrex EM (-20F +300F) |
| Blower | None |
| Current @ Voltage | 18.100 A @ 460.0 V 36.200 A @ 230.0 V 38.000 A @ 208.0 V |
| Design Code | A |
| Drip Cover | No Drip Cover |
| Duty Rating | CONT |
| Efficiency @ 100% Load | 92.4 % |
| Electrically Isolated Bearing | Not Electrically Isolated |
| Feedback Device | NO FEEDBACK |
| Frame Prefix | D |
| Front Shaft Indicator | None |
| Heater Indicator | No Heater |

Part detail

| | |
|--------------|------------|
| Revision | E |
| Type | AC |
| Mech. spec. | 09F285 |
| Base | |
| Status | PRD/A |
| Elec. spec. | 09WGT597 |
| Layout | 09LYF285 |
| Eff. date | 11-14-2023 |
| CD Diagram | CD0005 |
| Poles | 04 |
| Leads | 9#12 |
| Proprietary | False |
| Created date | 02-02-2021 |

| | |
|-------------------------------|-----------------------|
| High Voltage Full Load Amps | 18.1 a |
| Insulation Class | F |
| Inverter Code | Inverter Ready |
| KVA Code | H |
| Lifting Lugs | Standard Lifting Lugs |
| Locked Bearing Indicator | Locked Bearing |
| Motor Lead Quantity/Wire Size | 9 @ 12 AWG |
| Motor Lead Termination | Flying Leads |
| Motor Standards | IEC |
| Motor Type | 0944M |
| Mounting Arrangement | F2 |
| Number of Poles | 4 |
| Overall Length | 23.63 IN |
| Power Factor | 84 |
| Product Family | General Purpose |
| Pulley End Bearing Type | Ball |
| Pulley Face Code | Standard |
| Pulley Shaft Indicator | Tapped & Key |
| Rodent Screen | None |
| Service Factor | 1.15 |
| Shaft Diameter | 1.654 IN |
| Shaft Ground Indicator | No Shaft Grounding |
| Shaft Rotation | Reversible |
| Shaft Slinger Indicator | Shaft Slinger |
| Speed | 1765 rpm |
| Speed Code | Single Speed |
| Starting Method | Direct on line |
| Thermal Device - Bearing | None |
| Thermal Device - Winding | None |
| Vibration Sensor Indicator | No Vibration Sensor |
| Winding Thermal 1 | None |
| Winding Thermal 2 | None |

Nameplate

| NP1159L | | | |
|---------------------|--------------|-----------------------|-----------------|
| CAT.NO. | EMM2333 | | |
| SPEC. | 09F285T597G1 | | |
| IEC FRAME | D160M | KW | 11 |
| VOLTS | 230/460 | | |
| AMP | 36.2/18.1 | | |
| RPM | 1765 | ENCL | TEFC |
| HZ | 60 | PH | 3 CL F |
| SER.F. | 1.15 | DES | A CODE H |
| NEMA-NOM-EFF | 92.4 | I.P. | 54 |
| RATING | 40C AMB-CONT | | |
| CC | 010A | USABLE AT 208V | N/A |
| DE | 6309 | ODE | 6208 |
| SER. # | | | |

AC Induction Motor Performance Data

Record # 85505

Typical performance - not guaranteed values

| Winding: 37WGR177-R007 | | Type: 3734M | | Enclosure: TENV | |
|-------------------------------|--------------------------|----------------------------|--|--------------------------|--|
| Nameplate Data | | | 460 V, 60 Hz: High Voltage Connection | | |
| Rated Output (HP) | 5 | Full Load Torque | 14.76 LB-FT | | |
| Volts | 230/460 | Start Configuration | direct on line | | |
| Full Load Amps | 12.4/6.2 | Breakdown Torque | 47.48 LB-FT | | |
| R.P.M. | 1770 | Pull-up Torque | 22.38 LB-FT | | |
| Hz | 60 Phase | 3 | Locked-rotor Torque | 28.3 LB-FT | |
| NEMA Design Code | B KVA Code | J | Starting Current | 49.16 A | |
| Service Factor (S.F.) | | 1 | No-load Current | 2.83 A | |
| NEMA Nom. Eff. | 89.5 Power Factor | 82 | Line-line Res. @ 25°C | 2.12 Ω | |
| Rating - Duty | 40C AMB-CONT | | Temp. Rise @ Rated Load | 56°C | |
| | | | Locked-rotor Power Factor | 37.5 | |
| | | | Rotor inertia | 0.836 lb-ft ² | |

Load Characteristics 460 V, 60 Hz, 5 HP

| % of Rated Load | 25 | 50 | 75 | 100 | 125 | 150 |
|------------------------|-----------|-----------|-----------|------------|------------|------------|
| Power Factor | 41 | 64 | 77 | 83 | 85 | 85 |
| Efficiency | 86.4 | 90.8 | 91.4 | 91.3 | 90.7 | 89.3 |
| Speed | 1793 | 1787 | 1779 | 1772 | 1762 | 1753 |
| Line amperes | 3.28 | 3.99 | 5 | 6.18 | 7.6 | 9.19 |

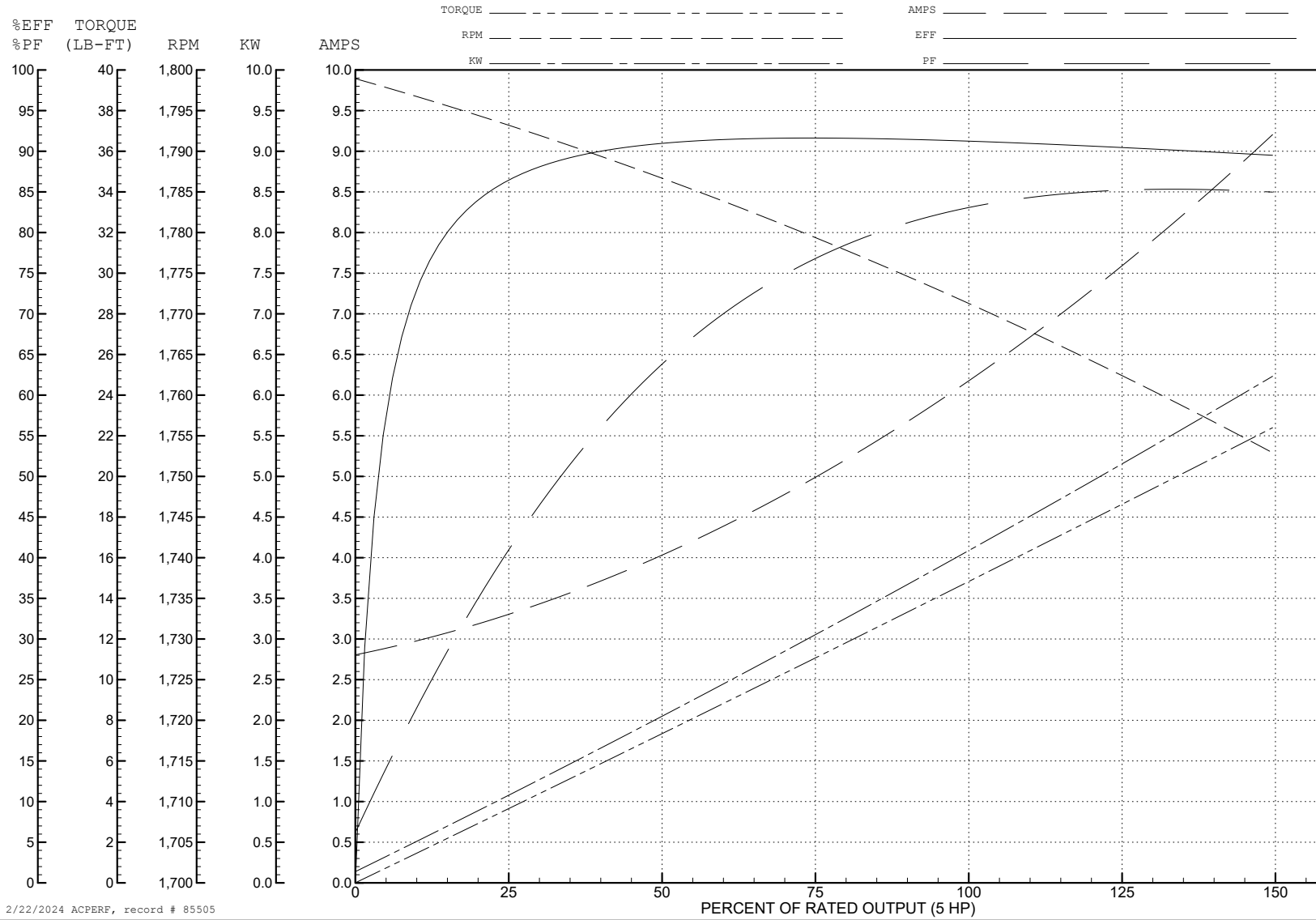
ABB Motors and Mechanical Inc.

WINDING # 37WGR177

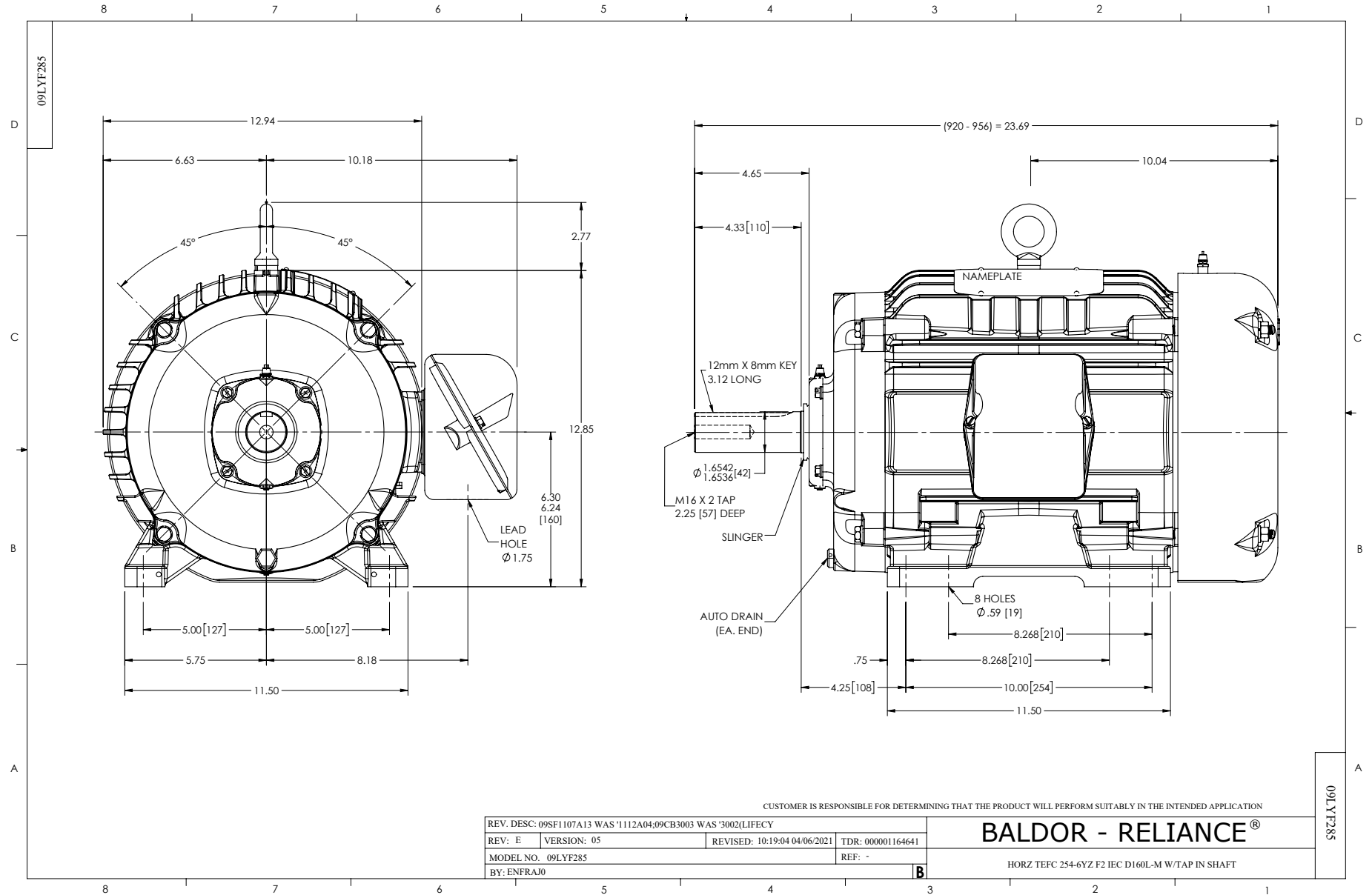
Typical performance - not guaranteed values.

5 HP 3 PH 60 HZ 1770 RPM 460 V 3734M

TORQUES (LB-FT) : PO=47.48 PU=22.38 LR=28.3 LRA=49.16



2/22/2024 ACPERF, record # 85505



CD0005



LOW VOLTAGE
(2Y)



LINE

HIGH VOLTAGE
(1Y)



LINE

NOTES:

1. INTERCHANGE ANY TWO LINE LEADS TO REVERSE ROTATION.
2. OPTIONAL THERMOSTATS ARE PROVIDED WHEN SPECIFIED.
3. ACTUAL NUMBER OF INTERNAL PARALLEL CIRCUITS MAY BE A MULTIPLE OF THOSE SHOWN ABOVE.
4. LEAD COLORS ARE OPTIONAL. LEADS MUST ALWAYS BE NUMBERED AS SHOWN.

CD0005

| | | | |
|---|---------|-------------------------|--------------|
| REV. DESC: REVISE TO SHOW OPTIONAL COLORS | | | |
| REV. LTR: E | BY: JLP | REVISED: 01/19/99 10:15 | TDR: 0171435 |
| S00000 | | FILE: AAA00005140 | MDL: - |
| | | MTL: - | |

BALDOR ELECTRIC Co.

3PH, DV, 9 LEADS