

BALDOR • RELIANCE

Customer information packet

A44-8034-3311

250//200HP, 1780//1480RPM, 3PH, 60//50HZ, 44

Class - CLI GP C,D; CLII GP F,G

Division - Division I

Specifications

Enclosure	TEFC
Frame	449T
Frame Material	Iron
Frequency	50.00 Hz 60.00 Hz
Haz Area Class and Group	CLI GP C,D; CLII GP F,G
Haz Area Division	Division I
Motor Letter Type	Three Phase
Output @ Frequency	250.000 HP @ 60 HZ 200.000 HP @ 50 HZ
Phase	3
Synchronous Speed @ Frequency	1800 RPM @ 60 HZ
Voltage @ Frequency	380.0 V @ 50 HZ 460.0 V @ 60 HZ
Agency Approvals	CCSA US CSA CSA EEV UL
Ambient Temperature	40 °C
Auxillary Box	No Auxillary Box
Base Indicator	Rigid
Bearing Grease Type	Polyrex EM (-20F +300F)
Current @ Voltage	263.000 A @ 380.0 V 270.000 A @ 460.0 V
Design Code	B
Drip Cover	No Drip Cover
Duty Rating	CONT
Efficiency @ 100% Load	96.2 %
Feedback Device	NO FEEDBACK
Haz Area Temp Code	T4
Heater Indicator	No Heater
High Voltage Full Load Amps	263.0 a

Part detail

Revision	G
Type	AC
Mech. spec.	
Base	
Status	INA/A
Elec. spec.	A44WG3311
Layout	617426-166
Eff. date	03-10-2021
CD Diagram	416820-036
Poles	04
Leads	3#2/0 (02 per group)
Proprietary	False
Created date	11-18-2015

Insulation Class	F
Inverter Code	Inverter Ready
KVA Code	G
Motor Lead Quantity/Wire Size	6 @ 2/0 AWG
Motor Standards	NEMA
Motor Type	A44160M
Mounting Arrangement	F1
Number of Poles	4
Overall Length	53.47 IN
Power Factor	90
Product Family	General Industrial
Pulley End Bearing Type	Ball
Pulley Face Code	Standard
Service Factor	1.00
Shaft Ground Indicator	No Shaft Grounding
Shaft Rotation	Reversible
Shaft Slinger Indicator	Shaft Slinger
Speed	1480 rpm 1780 rpm
Speed Code	Single Speed
Starting Method	Direct on line
Thermal Device - Bearing	None
Thermal Device - Winding	Normally Closed Thermostat

Nameplate

NP2496L	
MOBIL POLYREX EM	

000613006PC

CLASS I GROUP C D X **NO.****CLASS II GROUP** F G X**OPERATING TEMP CODE** T4

NP2475L

CAT.NO.		SPEC NO.	A44-8034-3311				FRAME	449T
HP	250//200	PHASE	3	DESIGN	B	TYPE	P	
RPM	1780//1480	HZ	60//50	AMB	40	SF	1.00	
VOLTS	460//380	DUTY	CONT		INSUL.CLASS	F		
AMPS	270//263	ENCL	TEFC	CODE	G			
DRIVE END BEARING	90BC03J30X	NEMA-NOM-EFFICIENCY	96.2					
OPP D.E. BEARING	90BC03J30X							
SER.NO.								
	CL I,ZONE 1,GR IIA IIB,T4					MOTOR WEIGHT		

617426-166

DUTY MASTER ALTERNATING CURRENT MOTORS

SQUIRREL-CAGE INDUCTION

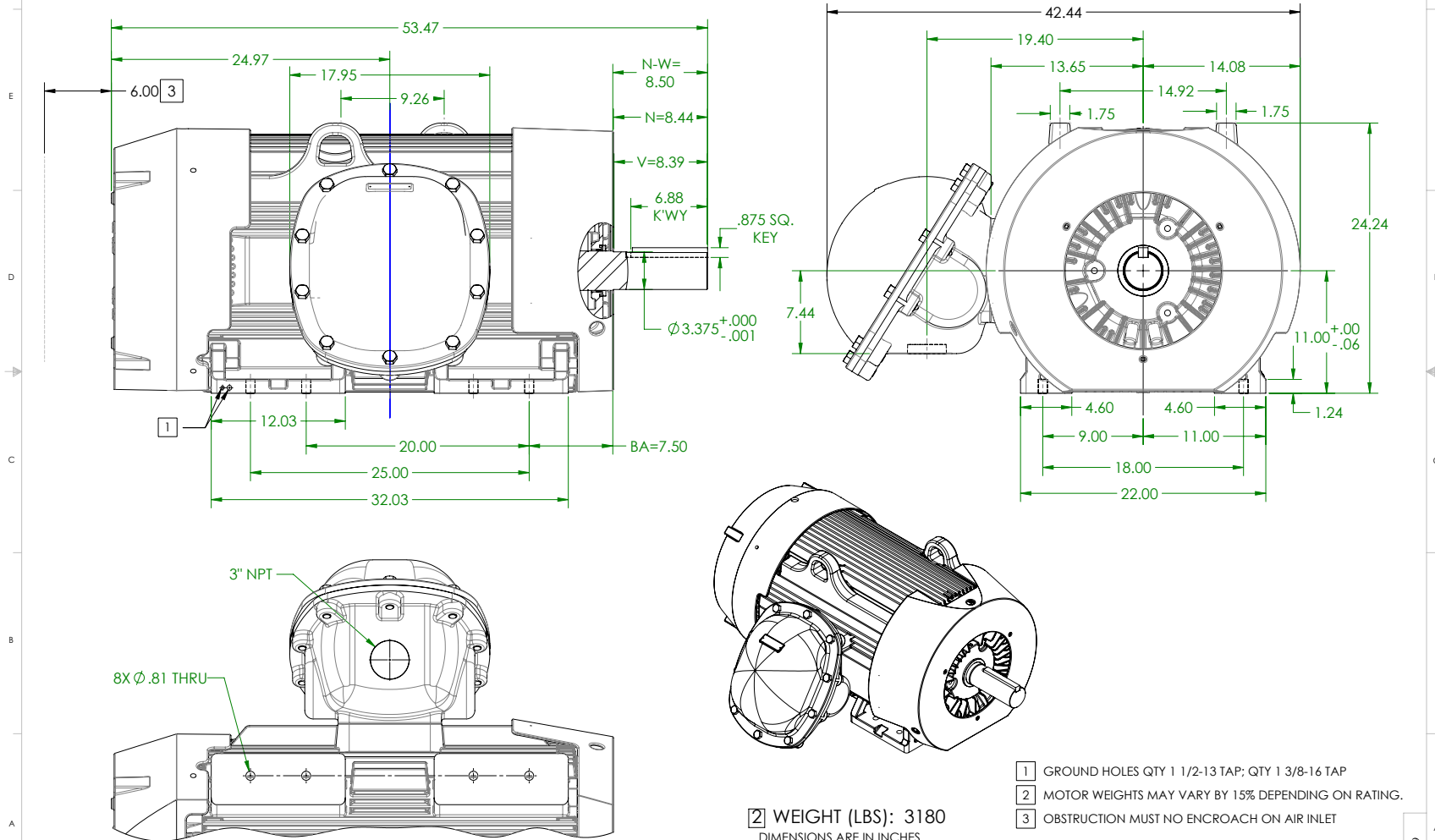
COOLING: FAN COOLED

ENCLOSURE: UL LISTED MOTOR

FRAME G447T ABOVE NEMA RATINGS (1800 RPM MAX)

MOUNTING: FOOT, F-1

INCLUDES G449T FRAME MOUNTING HOLES



SHEET NUMBER
1 OF 1
991-9C7219

IF MOUNTING CLEARANCE DETAILS ARE REQUIRED, CONSULT FACTORY.
MAXIMUM PERMISSIBLE SHAFT RUNOUT WHEN MEASURED AT END OF
STANDARD SHAFT EXTENSION IS .003" T.I.R. TO 5 INCH DIA.

2 WEIGHT (LBS): 3180

DIMENSIONS ARE IN INCHES

CUSTOMER IS RESPONSIBLE FOR DETERMINING THAT MOTOR PERFORMANCE IS SUITABLE IN THE APPLICATION.

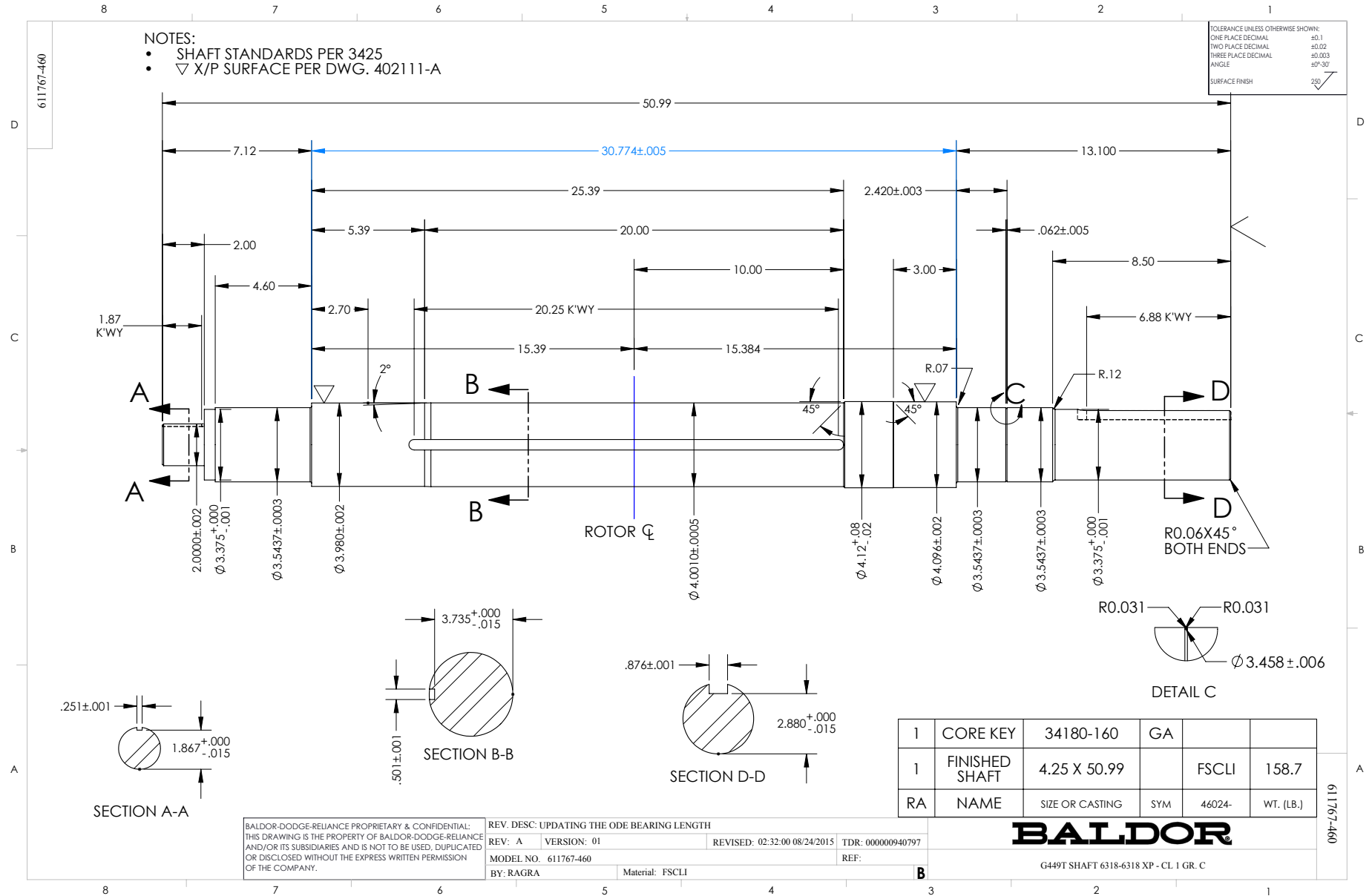
- 1 GROUND HOLES QTY 1 1/2-13 TAP; QTY 1 3/8-16 TAP
- 2 MOTOR WEIGHTS MAY VARY BY 15% DEPENDING ON RATING.
- 3 OBSTRUCTION MUST NO ENCROACH ON AIR INLET

REV. DESC. NEW ISSUE	VERSION: 00	REVISED: 09-31-40 04/21/2016	TDR: 00000976634
MODEL NO. 617426-166	BY: RAGGDM		

BALDOR

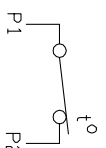
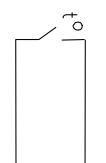
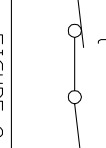
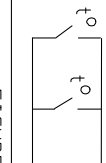
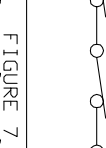
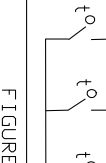
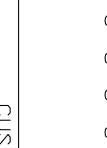
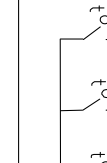
G449T447T XP FT SIDE CTR C/B - CL 1 C / CL 2 E, F & G 3" NPT

617426-166



CONNECTION DIAGRAM ACCESSORIES

MOTOR WINDING THERMOSTATS	
CONTACTS _____ @ _____ °C	
FIGURE NUMBER _____	
CONTACT RATING	
VOLTS	CONTINUOUS AMPERES
110-120	3.0
220-240	1.5
440-480	0.75
550-600	0.60
	INRUSH AMPERES
	30
	15
	7.5
	6.0

NORMALLY CLOSED	THERMOSTATS	NORMALLY OPEN
 <p>FIGURE 1</p>		 <p>FIGURE 4</p>
 <p>FIGURE 2</p>		 <p>FIGURE 5</p>
 <p>FIGURE 3</p>		 <p>FIGURE 6</p>
 <p>FIGURE 7</p>		 <p>FIGURE 8</p>

CUSTOMER _____ CUSTOMER ORDER NO. _____ S.O. NO. _____

418174-006

418174-006

REV. DESC: LOADED TO BUS		
REV. LTR: A	VERSION: 01	TDR: 000000570390
FILE: \RAG\00013\849	REVISED: 10:16:21 12/07/2010	BY: RAGDRF
MTL: -		

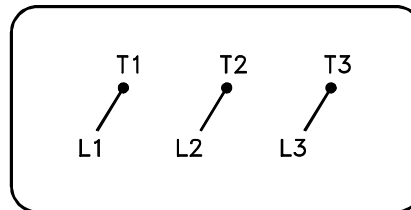
BALDOR

A-C MOTOR CONNECTION ACCESSORIES

SH 1 of 1

416820-036

A-C MOTOR
CONNECTION DIAGRAM
STANDARD 3 LEAD CONNECTED



(N.P. 1575-BA)

REV. DESC: LOADED TO BUS, C/R 335225		
REV. LTR: -	VERSION: 00	TDR: 000000538207
FILE: \MGA\00000\682	REVISED: 11:54:06 04/30/2010	
MTL: -	BY: RAGRA	

BALDOR

CONN DIAG - STANDARD 3 LEAD
SH 1 of 1

416820-036