



---

# Customer information packet

## EM44304TS-4

300HP, 1780RPM, 3PH, 60HZ, 449TS, TEFC, F1

Class - None

Division - Not Applicable

## Specifications

|                               |                         |
|-------------------------------|-------------------------|
| Enclosure                     | TEFC                    |
| Frame                         | 449TS                   |
| Frame Material                | Iron                    |
| Frequency                     | 60.00 Hz                |
| Haz Area Class and Group      | None                    |
| Haz Area Division             | Not Applicable          |
| Motor Letter Type             | Three Phase             |
| Output @ Frequency            | 300.000 HP @ 60 HZ      |
| Phase                         | 3                       |
| Synchronous Speed @ Frequency | 1800 RPM @ 60 HZ        |
| Voltage @ Frequency           | 460.0 V @ 60 HZ         |
| Agency Approvals              | CCSAUSEEV               |
| Ambient Temperature           | 40 °C                   |
| Auxillary Box                 | No Auxillary Box        |
| Base Indicator                | Rigid                   |
| Bearing Grease Type           | Polyrex EM (-20F +300F) |
| Current @ Voltage             | 327.000 A @ 460.0 V     |
| Design Code                   | B                       |
| Drip Cover                    | No Drip Cover           |
| Duty Rating                   | CONT                    |
| Efficiency @ 100% Load        | 96.2 %                  |
| Feedback Device               | NO FEEDBACK             |
| Heater Indicator              | No Heater               |
| High Voltage Full Load Amps   | 327.0 a                 |
| Insulation Class              | F                       |
| Inverter Code                 | Inverter Ready          |
| IP Rating                     | NONE                    |
| KVA Code                      | G                       |
| Motor Lead Quantity/Wire Size | 12 @ 2 AWG              |
| Motor Standards               | NEMA                    |
| Motor Type                    | A44144M                 |
| Mounting Arrangement          | F1                      |

## Part detail

|              |                    |
|--------------|--------------------|
| Revision     | C                  |
| Type         | AC                 |
| Mech. spec.  |                    |
| Base         |                    |
| Status       | PRD/A              |
| Elec. spec.  | A44WG2960          |
| Layout       | 617427-445         |
| Eff. date    | 11-06-2020         |
| CD Diagram   | 416820-008         |
| Poles        | 04                 |
| Leads        | 6#2 (02 per group) |
| Proprietary  | False              |
| Created date | 04-09-2015         |

|                                 |                       |
|---------------------------------|-----------------------|
| <b>Number of Poles</b>          | 4                     |
| <b>Overall Length</b>           | 49.47 IN              |
| <b>Power Factor</b>             | 89                    |
| <b>Product Family</b>           | General Industrial    |
| <b>Pulley End Bearing Type</b>  | Ball                  |
| <b>Pulley Face Code</b>         | Standard              |
| <b>Service Factor</b>           | 1.15                  |
| <b>Shaft Diameter</b>           | 2.375 IN              |
| <b>Shaft Ground Indicator</b>   | No Shaft Grounding    |
| <b>Shaft Rotation</b>           | Reversible            |
| <b>Shaft Slinger Indicator</b>  | No Slinger            |
| <b>Speed</b>                    | 1780 rpm              |
| <b>Speed Code</b>               | Single Speed          |
| <b>Starting Method</b>          | Wye Start - Delta Run |
| <b>Thermal Device - Bearing</b> | None                  |
| <b>Thermal Device - Winding</b> | None                  |

**Nameplate**

---

|                  |  |
|------------------|--|
| NP2496L          |  |
| MOBIL POLYREX EM |  |
|                  |  |

---

**NP2349L**

|                          |               |                     |             |                                |       |
|--------------------------|---------------|---------------------|-------------|--------------------------------|-------|
| <b>SPEC NO.</b>          | A44-7110-2960 | <b>CAT.NO.</b>      | EM44304TS-4 | <b>FRAME</b>                   | 449TS |
| <b>HP</b>                | 300           | <b>VOLTS</b>        | 460         | <b>PHASE</b>                   | 3     |
| <b>RPM</b>               | 1780          | <b>AMPS</b>         | 327         | <b>DESIGN</b>                  | B     |
| <b>DRIVE END BEARING</b> | 90BC03J30X    | <b>DUTY</b>         | CONT        | <b>TYPE</b>                    | P     |
| <b>OPP D.E. BEARING</b>  | 90BC03J30X    | <b>INSUL.CLASS</b>  | F           | <b>AMB</b>                     | 40    |
| <b>SER.NO.</b>           |               | <b>HZ</b>           | 60          | <b>SF</b>                      | 1.15  |
|                          |               | <b>ENCL</b>         | TEFC        | <b>CODE</b>                    | G     |
|                          |               | <b>POWER FACTOR</b> | 89          | <b>NEMA-NOM-EFFICIENCY</b>     | 96.2  |
|                          |               |                     |             | <b>MAX CORR KVAR</b>           | 41    |
|                          |               |                     |             | <b>GUARANTEED EFFICIENCY</b>   | 95.4  |
|                          |               |                     |             | <b>NEMA NOM/CSA QUOTED EFF</b> |       |
|                          |               |                     |             | <b>MOTOR WEIGHT</b>            | 2764  |





617427-445

# DUTY MASTER ALTERNATING CURRENT MOTORS

SQUIRREL-CAGE INDUCTION

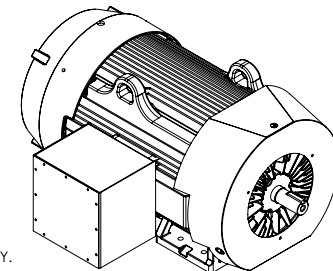
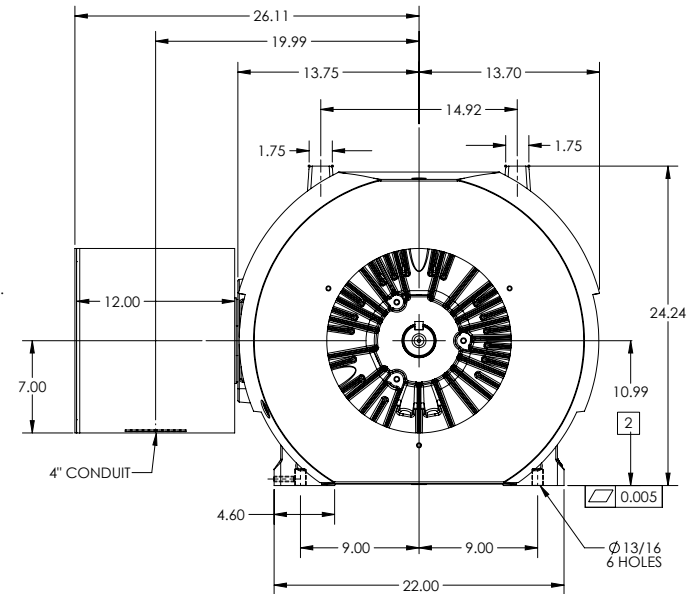
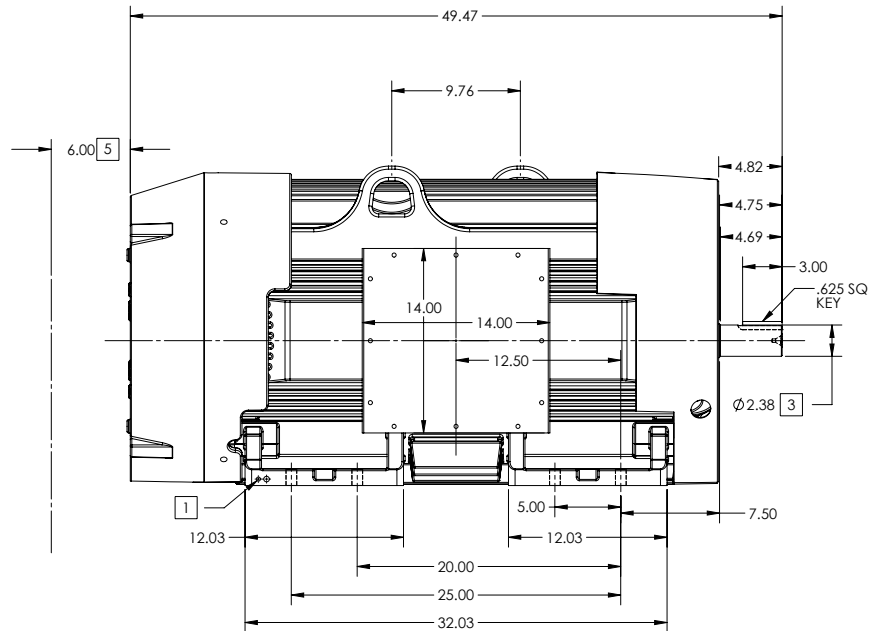
ENCLOSURE: TOTALLY ENCLOSED

FRAME 449TS ABOVE NEMA RATINGS (3600 RPM MAX)

COOLING: FAN COOLED

MOUNTING: FOOT

INCLUDES 447TS FRAME MOUNTING HOLES



**4** WEIGHT (LBS): 3080

DRIVE END AIR DEFLECTOR IS ONLY INCLUDED WHEN NECESSARY.

DIMENSIONS ARE IN INCHES

CUSTOMER IS RESPONSIBLE FOR DETERMINING THAT MOTOR PERFORMANCE IS SUITABLE IN THE APPLICATION.

1. GROUND HOLES QTY 1 1/2-13 TAP; QTY 1 3/8-16 TAP
2. VARIES +.00, -.06
3. VARIES +.000, -.001
4. MOTOR WEIGHTS MAY VARY BY 1.5% DEPENDING ON RATING.
5. OBSTRUCTION MUST NO ENCROACH ON AIR INLET

CONDUIT BOX LOCATED ON OPPOSITE SIDE WHEN F-2.  
IF MOUNTING CLEARANCE DETAILS ARE REQUIRED, CONSULT FACTORY.  
MAXIMUM PERMISSIBLE SHAFT RUNOUT WHEN MEASURED AT END OF  
STANDARD SHAFT EXTENSION IS .003" T.I.R. TO 5 INCH DIA.

SHEET NUMBER  
**1 OF 2**

617427-445

|                        |             |                              |                  |
|------------------------|-------------|------------------------------|------------------|
| REV. DESC: NEW DRAWING | VERSION: 00 | REVISED: 11-13-38 04/02/2015 | TDR: 00000918312 |
| MODEL NO. 617427-445   | BY: RAGEC   |                              |                  |

**BALDOR**

G449TS447TS-FOOTED-SIDE-CENTER CONDUIT BOX-14X14X12

617427-445



617427-445

# DUTY MASTER ALTERNATING CURRENT MOTORS

SQUIRREL-CAGE INDUCTION

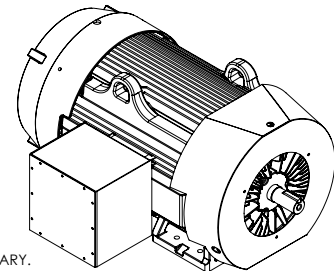
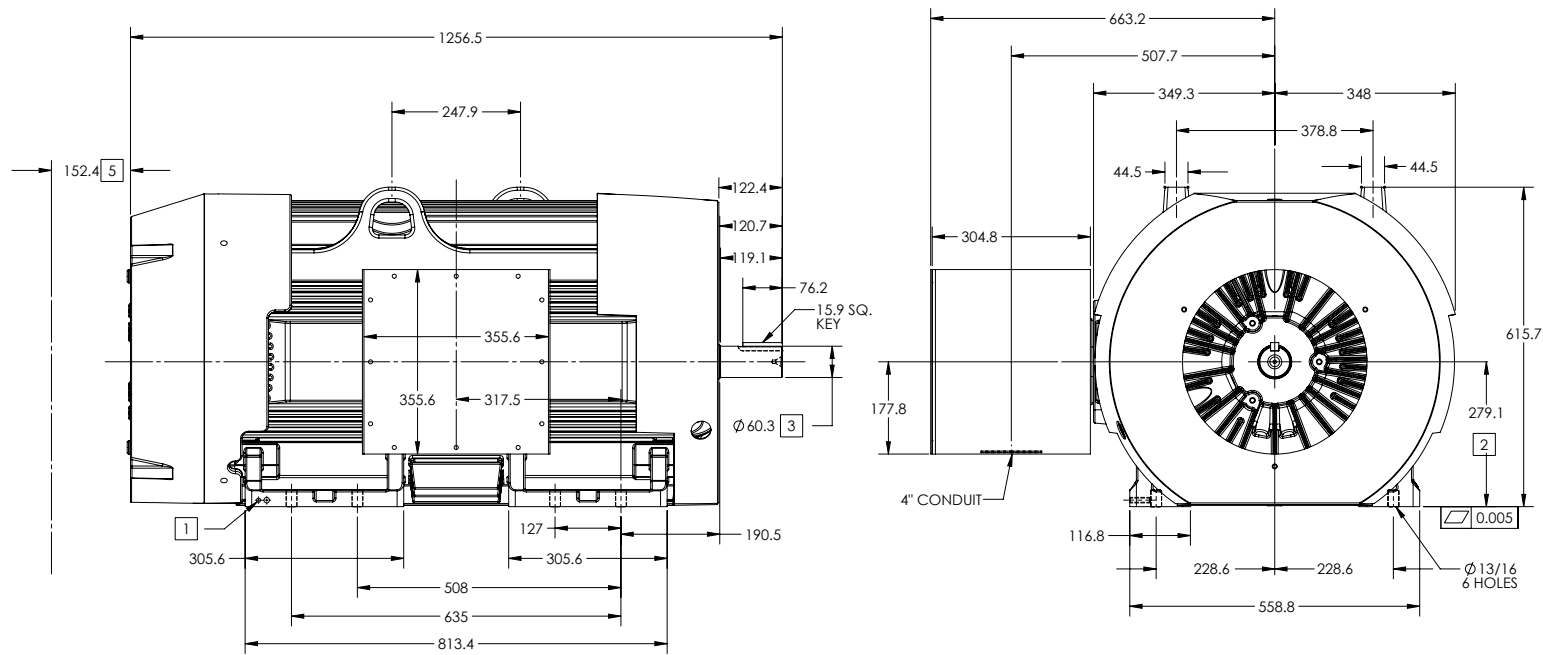
ENCLOSURE: TOTALLY ENCLOSED

FRAME 449TS ABOVE NEMA RATINGS (3600 RPM MAX)

COOLING: FAN COOLED

MOUNTING: FOOT

INCLUDES 447TS FRAME MOUNTING HOLES



**5** WEIGHT (KGS): 1400

DRIVE END AIR DEFLECTOR IS ONLY INCLUDED WHEN NECESSARY.

DIMENSIONS ARE IN MILLIMETERS

CUSTOMER IS RESPONSIBLE FOR DETERMINING THAT MOTOR PERFORMANCE IS SUITABLE IN THE APPLICATION.

- 1. GROUND HOLES QTY 1 1/2-13 TAP; QTY 1 3/8-16 TAP
- 2. VARIES +0. -1.5
- 3. VARIES +.00 - .03
- 4. MOTOR WEIGHTS MAY VARY BY 15% DEPENDING ON RATING.
- 5. OBSTRUCTION MUST NO ENCR OACH ON AIR INLET

CONDUIT BOX LOCATED ON OPPOSITE SIDE WHEN F-2.  
IF MOUNTING CLEARANCE DETAILS ARE REQUIRED, CONSULT FACTORY.  
MAXIMUM PERMISSIBLE SHAFT RUNOUT WHEN MEASURED AT END OF  
STANDARD SHAFT EXTENSION IS .08 MM T.I.R. TO 127 MM DIA.

SHEET NUMBER  
**2 OF 2**

544-17427-119

|                        |             |                              |                  |
|------------------------|-------------|------------------------------|------------------|
| REV. DESC: NEW DRAWING | VERSION: 00 | REVISED: 11-13-38 04/02/2015 | TDR: 00000918312 |
| MODEL NO. 617427-445   | BY: RAGEC   |                              |                  |

**BALDOR**

G449TS447TS-FOOTED-SIDE-CENTER CONDUIT BOX-14X14X12

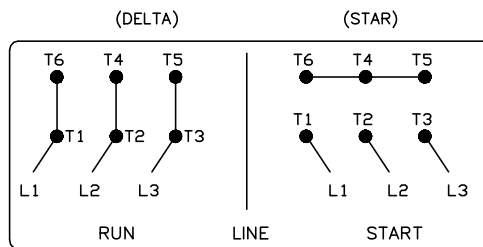
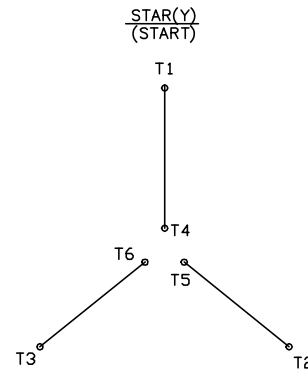
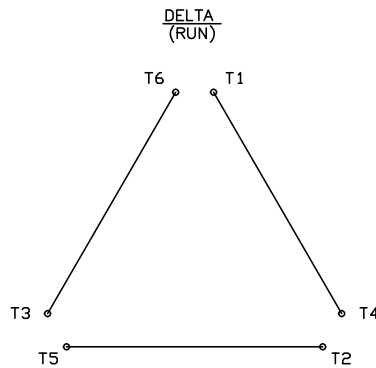
617427-445

416820-008

# A-C MOTOR CONNECTION DIAGRAM

STANDARD 6 LEAD

Y START – DELTA RUN



< N. P. 1767-DC >

|  |                                |                  |
|--|--------------------------------|------------------|
| REV. DESC: ADDED T4 TO Y CONNECT DIAGRAM |                                |                  |
| REV. LTR: D                              | VERSION: 04                    | TDR: 00000847713 |
| FILE: \RAG\00001\808                     | REVISED: 10: 41: 26 04/08/2014 | BY: RAGJSS1      |
| MTL: -                                   | © □                            |                  |

**BALDOR**

CONNECT DIAGRAM STD 6 LEAD Y START DELTA RUN

SH 1 of 1

416820-008