

ABB BALDOR RELIANCE III

Customer information packet

EM44254T-2340

250HP, 1785RPM, 3PH, 60HZ, L449T, A44200M, TEF

Class - None

Division - Not Applicable

Specifications

Enclosure	TEFC
Frame	L449T
Frame Material	Iron
Frequency	60.00 Hz
Haz Area Class and Group	None
Haz Area Division	Not Applicable
Motor Letter Type	Three Phase
Output @ Frequency	250.000 HP @ 60 HZ
Phase	3
Synchronous Speed @ Frequency	1800 RPM @ 60 HZ
Voltage @ Frequency	2300.0 V @ 60 HZ 4000.0 V @ 60 HZ
Agency Approvals	CSA EEV CCSA US
Ambient Temperature	40 °C
Auxiliary Box	AUXILLARY BOX
Base Indicator	Rigid
Bearing Grease Type	Polyrex EM (-20F +300F)
Current @ Voltage	32.400 A @ 4000.0 V 56.300 A @ 2300.0 V
Design Code	-
Drip Cover	No Drip Cover
Duty Rating	CONT
Efficiency @ 100% Load	95.0 %
Feedback Device	NO FEEDBACK
Frame Prefix	L
Heater Indicator	Heater Included, 120 V
High Voltage Full Load Amps	32.4 a
Insulation Class	F
Inverter Code	Not Inverter
IP Rating	NONE
KVA Code	H

Part Detail

Revision	W
Type	AC
Mech. spec.	
Base	
Status	PRD/A
Elec. spec.	A44WG4997
Layout	617423-169
Eff. date	05-06-2024
CD Diagram	416820-004
Poles	04
Leads	6#6 482406006P
Proprietary	False
Created date	10-11-2013

Lifting Lugs	Standard Lifting Lugs
Motor Lead Quantity/Wire Size	6 @ 6 AWG
Motor Standards	Other
Motor Type	A44200M
Mounting Arrangement	F1
Number of Poles	4
Overall Length	60.21 IN
Power Factor	88
Pulley End Bearing Type	Ball
Pulley Face Code	Standard
Service Factor	1.15
Shaft Diameter	3.375 IN
Shaft Ground Indicator	No Shaft Grounding
Shaft Rotation	Reversible
Shaft Slinger Indicator	Shaft Slinger
Speed	1785 rpm
Speed Code	Single Speed
Starting Method	Direct on line
Thermal Device - Bearing	None
Thermal Device - Winding	RTD Only

Nameplate

NP3132L

SPEC NO.	P44G5953	CAT.NO.	EM44254T-2340				FRAME	L449T		
HP	250	VOLTS	2300/4000		PHASE	3	DESIGN	-	TYPE	P
RPM	1785	AMPS	56.3/32.4		HZ	60	AMB	40	SF	1.15
DRIVE END BEARING	110BC02J30X		DUTY	CONT		INSUL.CLASS	F			
OPP D.E. BEARING	6318/C3VL0241		ENCL	TEFC		CODE	H			
NEMA NOM/CSA QUOTED EFF	NEMA-NOM-EFFICIENCY		95							
SER.NO.	M44254L-2340									
	MOTOR WEIGHT									

000901002AAA

EQUIPPED WITH 120V/245W AND 24

120V HTR= 1H1,1H2

0V/245W SPACE HEATERS

240V HTR= 2H1,2H2

NP2496L

MOBIL POLYREX EM

REL. S.O.	FRAME	HP	TYPE	PHASE/ HERTZ	RPM	VOLTS
	L449T	250	P	3/60	1785	2300/4000
AMPS	DUTY	AMB °C/ INSUL.	S.F.	NEMA DESIGN	CODE LETTER	ENCL.
56.3/32.4	CONT	40/F	1.15	--	H	TEFC
E/S	ROTOR	TEST S.O.	TEST DATE	STATOR RES. @25 °C OHMS (BETWEEN LINES)		
-	418143043GE	---	---	.416/1.25		

PERFORMANCE

LOAD	HP	AMPERES	RPM	% POWER FACTOR	% EFFICIENCY
NO LOAD	0	9.3	1800	6.02	0
1/4	62.6	12.3	1797	59.7	91.7
2/4	125	18.1	1793	78.8	94.6
3/4	187	24.9	1789	85.2	95.1
4/4	250	32.4	1785	87.5	95.0
5/4	312	40.3	1781	88.2	94.6

SPEED TORQUE

	RPM	TORQUE % FULL LOAD	TORQUE LB.-FT.	AMPERES
LOCKED ROTOR	0	137	1007	237
PULL UP	270	98.9	727	229
BREAKDOWN	1724	256	1880	124
FULL LOAD	1785	100	735	32.4

AMPERES SHOWN FOR 4000. VOLT CONNECTION. IF OTHER VOLTAGE CONNECTIONS ARE AVAILABLE, THE AMPERES WILL VARY INVERSELY WITH THE RATED VOLTAGE

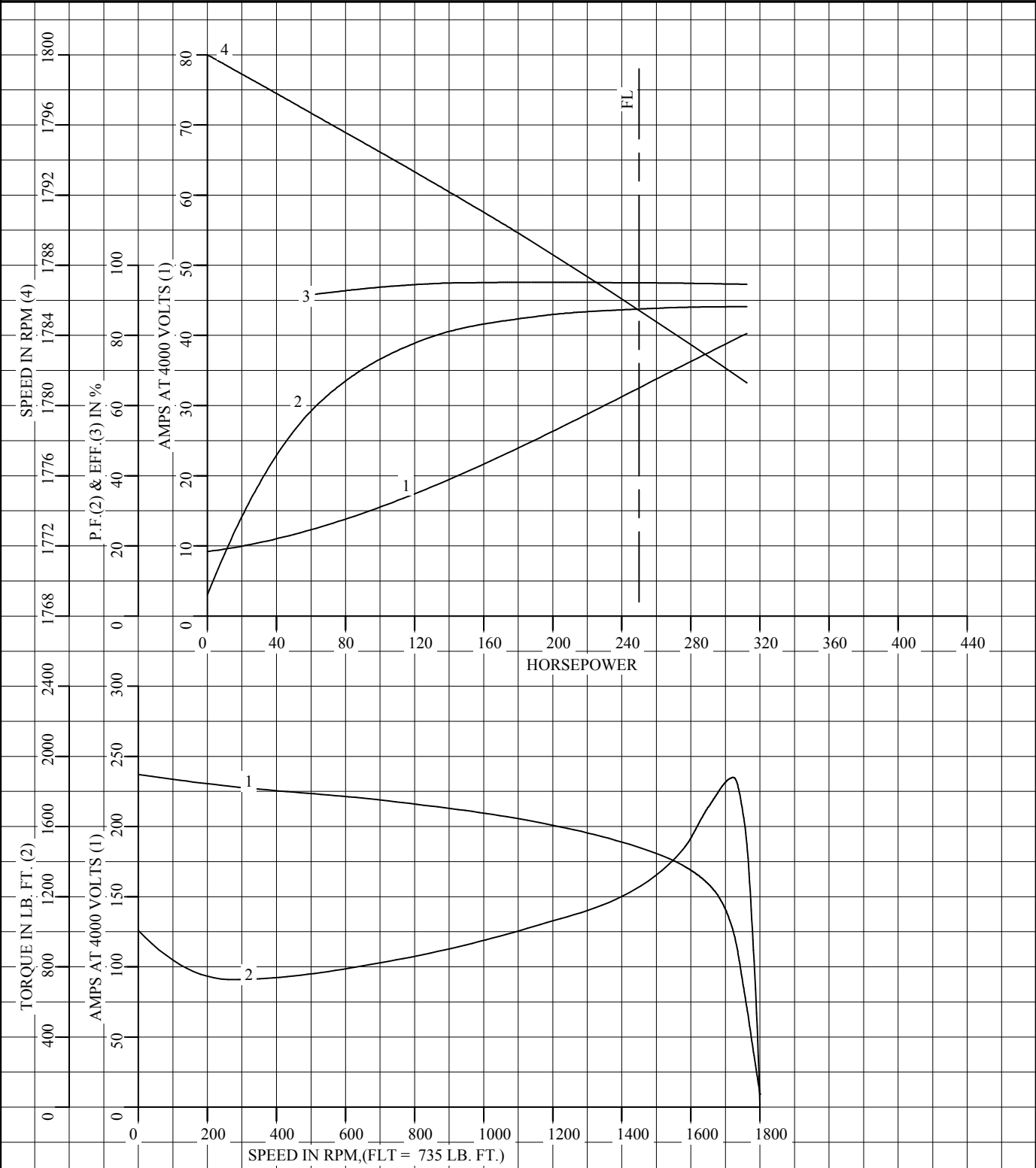
REMARKS: TYPICAL DATA



DR. BY R.K. BRIDGES
 CK. BY W.L. SMITH
 APP. BY W.L. SMITH
 DATE 04/30/14

**A-C MOTOR
 PERFORMANCE DATA** A44WG4997-R001
 ISSUE DATE 04/30/14

REL S.O.	RPM 1785	S.F. 1.15	ROTOR 418143043GE
FRAME L449T	VOLTS 2300/4000	NEMA DESIGN --	TEST S.O. TYPICAL DATA
HP 250	AMPS 56.3/32.4	CODE LETTER H	TEST DATE ---
TYPE P	DUTY CONT	ENCLOSURE TEFC	STATOR RES. @ 25 °C .416/1.25
PHASE/HERTZ 3/60	AMB °C/INSUL 40/F	E/S -	OHMS (BETWEEN LINES)



AMPERES SHOWN FOR 4000 VOLT CONNECTION, IF OTHER VOLTAGE CONNECTIONS ARE AVAILABLE, THE AMPERES WILL VARY INVERSELY WITH THE RATED VOLTAGE.



DR. BY R.K. BRIDGES
 CK. BY W.L. SMITH
 APP. BY W.L. SMITH
 DATE 04/30/14

**A-C MOTOR
 PERFORMANCE CURVES**
 A44WG4997-R001
 ISSUE DATE 04/30/14

DUTY MASTER ALTERNATING CURRENT MOTORS

SQUIRREL-CAGE INDUCTION

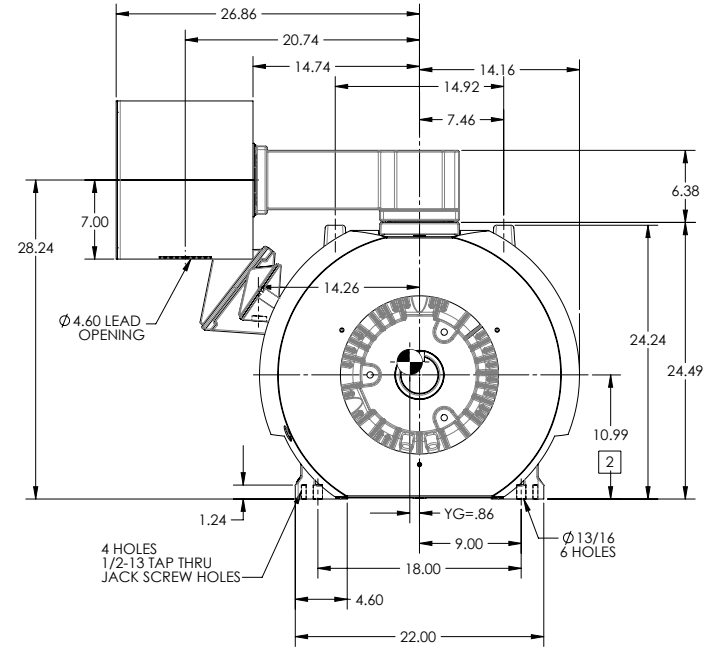
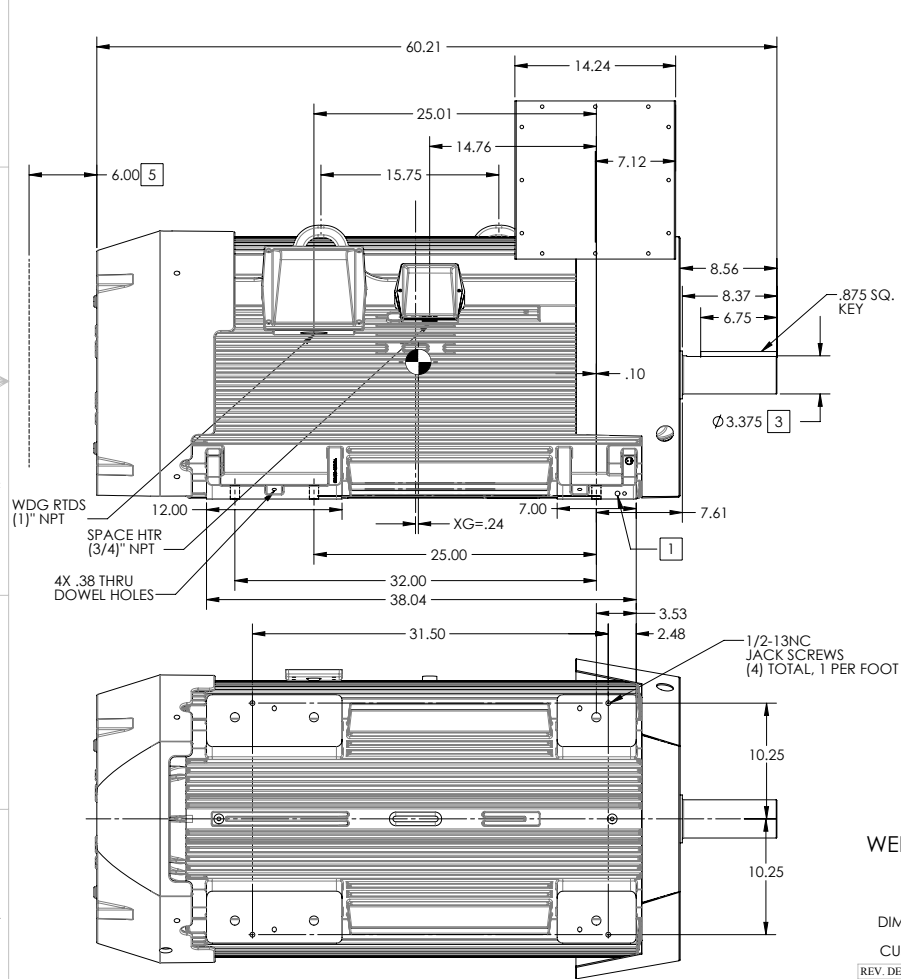
ENCLOSURE: TOTALLY ENCLOSED

FRAME GL449T ABOVE NEMA RATINGS

COOLING: FAN COOLED

MOUNTING: FOOT

INCLUDES DOWEL PIN HOLES, VERTICAL JACK SCREW HOLES, F1 AUX BOXES FOR WDG RTD & SPACE HEATERS AND 14X14X12 FABRICATED MAIN CBOX



1. GROUND HOLES QTY 1 1/2-13 TAP; QTY 1 3/8-16 TAP
2. VARIES +.00, -.06
3. VARIES +.000, -.001
4. MOTOR WEIGHTS MAY VARY BY 15% DEPENDING ON RATING.
5. OBSTRUCTION MUST NOT ENCR OACH ON AIR INLET

CONDUIT BOX LOCATED ON OPPOSITE SIDE WHEN F-2. IF MOUNTING CLEARANCE DETAILS ARE REQUIRED, CONSULT FACTORY. MAXIMUM PERMISSIBLE SHAFT RUNOUT WHEN MEASURED AT END OF STANDARD SHAFT EXTENSION IS .003" T.I.R. TO 5 INCH DIA.

WEIGHT (LBS): 4000

DIMENSIONS ARE IN INCHES

CUSTOMER IS RESPONSIBLE FOR DETERMINING THAT MOTOR PERFORMANCE IS SUITABLE IN THE APPLICATION.

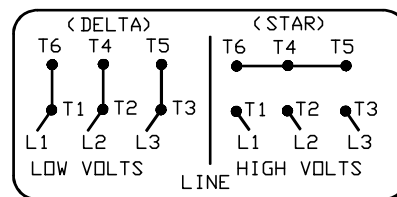
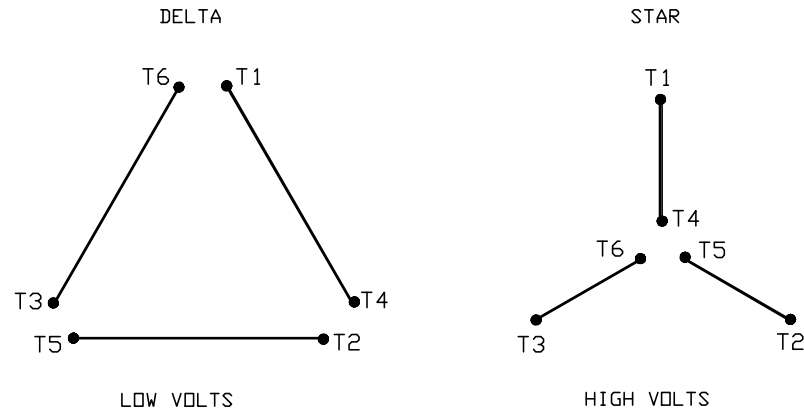
REV. A	VERSION: 01	REVISED: 01-40-05 08/31/2015	TDR: 00000941807
MODEL NO. 617423-169	BY: RAGSS1	Material:	REF:

BALDOR

D/S GL449T W/ 14X14X12 CB,DOWEL JACK SCREWS,320 AUX,180 AUX

416820-004

A-C MOTOR
CONNECTION DIAGRAM
STANDARD 6 LEAD < DELTA/STAR CONNECTED >
DUAL VOLTAGE < LOW VOLTS/HIGH VOLTS >



< N. P. 1767-CC >

REV. DESC: FONT CHANGE FOR PDF SEARCHABLE		
REV. LTR: C	VERSION: 03	TDR: 000001009406
FILE: \RSN\00017\950	REVISED: 10:55:03 12/21/2016	BY: MGHMTT
MTL: -		© □

BALDOR

A-C MOTOR CONNECTION DIAGRAM
SH 1 of 1

416820-004