

ABB BALDOR RELIANCE III

Customer information packet

EM44252TS-2340

250HP, 3575RPM, 3PH, 60HZ, 449TS, A44130M, TEF

Class - None

Division - Not Applicable

Specifications

Enclosure	TEFC
Frame	449TS
Frame Material	Iron
Frequency	60.00 Hz
Haz Area Class and Group	None
Haz Area Division	Not Applicable
Motor Letter Type	Three Phase
Output @ Frequency	250.000 HP @ 60 HZ
Phase	3
Synchronous Speed @ Frequency	3600 RPM @ 60 HZ
Voltage @ Frequency	2300.0 V @ 60 HZ 4000.0 V @ 60 HZ
Agency Approvals	CSA EEV CCSA US
Ambient Temperature	40 °C
Auxiliary Box	AUXILLARY BOX
Base Indicator	Rigid
Bearing Grease Type	Polyrex EM (-20F +300F)
Current @ Voltage	32.800 A @ 4000.0 V 57.000 A @ 2300.0 V
Design Code	-
Drip Cover	No Drip Cover
Duty Rating	CONT
Efficiency @ 100% Load	95.0 %
Feedback Device	NO FEEDBACK
Heater Indicator	Heater Included, 120 V
High Voltage Full Load Amps	32.8 a
Insulation Class	F
Inverter Code	Not Inverter
IP Rating	NONE
KVA Code	G
Lifting Lugs	Standard Lifting Lugs

Part Detail

Revision	Q
Type	AC
Mech. spec.	
Base	
Status	PRD/A
Elec. spec.	A44WG5000
Layout	617427-118
Eff. date	05-06-2024
CD Diagram	416820-004
Poles	02
Leads	6#6 4824-6-P
Proprietary	False
Created date	10-09-2013

Motor Lead Quantity/Wire Size	6 @ 6 AWG
Motor Standards	NEMA
Motor Type	A44130M
Mounting Arrangement	F1
Number of Poles	2
Overall Length	49.49 IN
Power Factor	86
Pulley End Bearing Type	Ball
Pulley Face Code	Standard
Service Factor	1.15
Shaft Diameter	2.375 IN
Shaft Ground Indicator	No Shaft Grounding
Shaft Rotation	Reversible
Shaft Slinger Indicator	Shaft Slinger
Speed	3575 rpm
Speed Code	Single Speed
Starting Method	Direct on line
Thermal Device - Bearing	None
Thermal Device - Winding	RTD Only

Nameplate

NP3132L

SPEC NO.	P44G5950	CAT.NO.	EM44252TS-2340				FRAME	449TS		
HP	250	VOLTS	2300/4000		PHASE	3	DESIGN	-	TYPE	P
RPM	3575	AMPS	57/32.8		HZ	60	AMB	40	SF	1.15
DRIVE END BEARING	65BC03J30X		DUTY	CONT		INSUL.CLASS	F			
OPP D.E. BEARING	6313/C3VL0241		ENCL	TEFC	CODE	G				
NEMA NOM/CSA QUOTED EFF	NEMA-NOM-EFFICIENCY			95						
SER.NO.	[REDACTED]									
	MOTOR WEIGHT									

000901002AAA

EQUIPPED WITH 120V/245W AND 24

120V HTR= 1H1,1H2

0V/245W SPACE HEATERS

240V HTR= 2H1,2H2

NP2496L

MOBIL POLYREX EM

BALDOR -RELIANCE SALES ORDER	FRAME	HP	TYPE	PHASE	HERTZ	RPM
QUOTE	449	250	P	3	60	3575
VOLTS	AMPS	DUTY	AMB°C	INSUL	S.F.	NEMA DESIGN
4000	32.9	CONT	40	F	1.15	---
CODE LETTER	ENCL.	ROTOR WK ² (lb-ft ²)	STATOR RES. @25°C OHMS (BETWEEN LINES)		TYPICAL DATA	
G	---	30.6	1.17210			

PERFORMANCE

LOAD	HP	AMPERES	RPM	% POWER FACTOR	% EFFICIENCY
NO LOAD	0	10.6	3600	6.7	0.0
1/4	63	13.9	3594	53.8	89.9
2/4	125	19.3	3588	74.2	93.8
3/4	188	25.7	3582	82.8	94.8
4/4	250	32.9	3575	86.3	95.0
5/4	313	40.4	3569	87.7	94.8
6/4	375	48.4	3561	88.2	94.5

SPEED TORQUE

	RPM	TORQUE % FULL LOAD	TORQUE LB-FT	AMPERES
LOCKED ROTOR	0	123	452	221.8
PULL UP	864	96	352	234.0
BREAKDOWN	3455	309	1136	147.2
FULL LOAD	3575	100	367	32.9

AMPERES SHOWN FOR **4000** VOLT CONNECTION(S). IF OTHER VOLTAGE CONNECTIONS ARE AVAILABLE, THE AMPERES WILL VARY INVERSELY WITH THE VOLTAGE.

REVISION 0

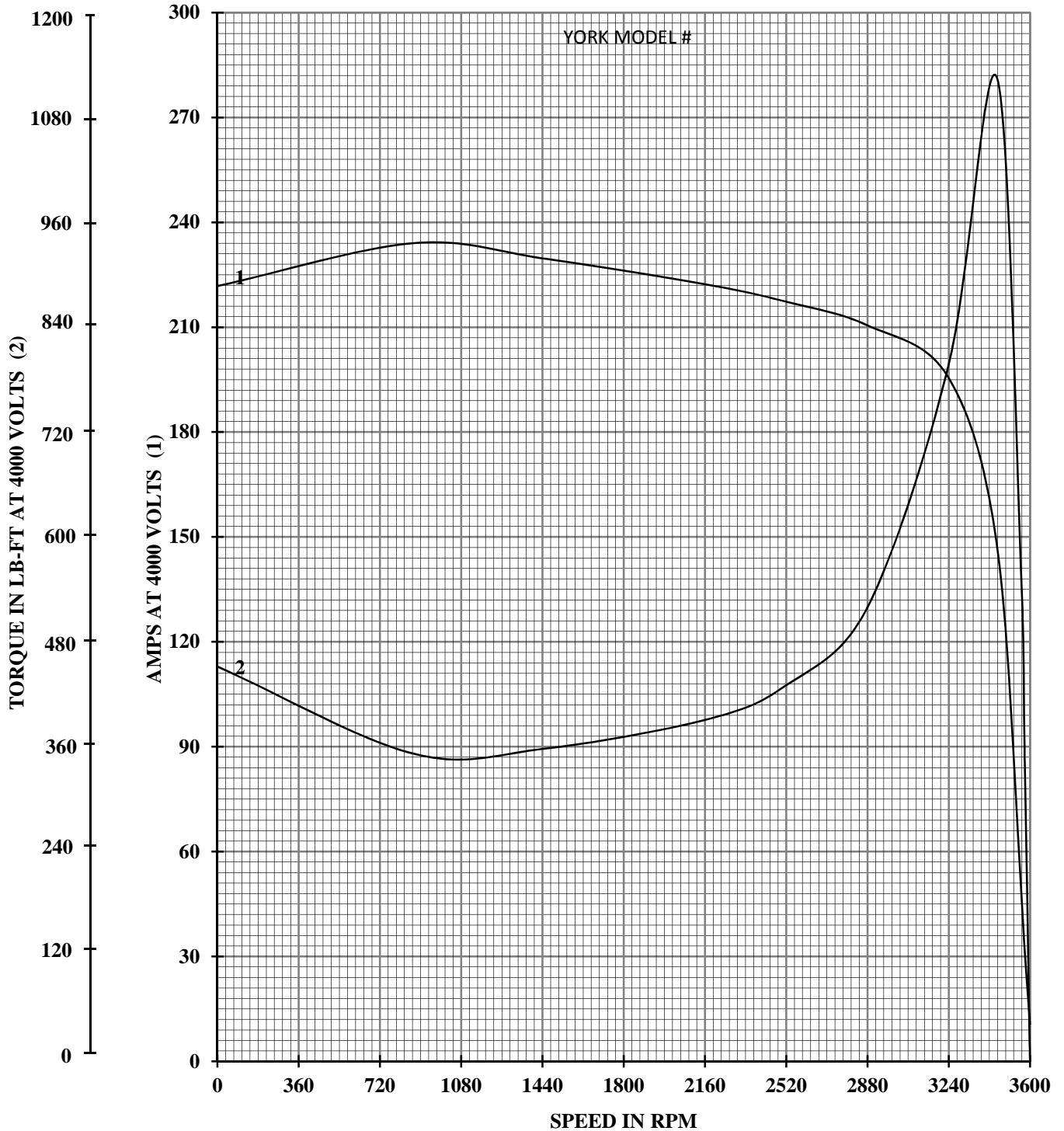


DR. BY CD
 CK. BY T. Kelati
 APP. BY T. Kelati
 DATE 10/22/2013

**A-C MOTOR
PERFORMANCE**

A44WG5000-C001
 SH 1 OF 6
 ISSUE DATE 10/22/2013

B-R S.O.	QUOTE	HERTZ	60	AMB°C	40	CODE LETTER	G
FRAME	449	RPM	3575	INSUL	F	ENCLOSURE	---
HP	250	VOLTS	4000	S.F.	1.15	STATOR RES. @25°C	1.17210
TYPE	P	AMPS	32.9	NEMA DESIGN	---	OHMS (BETWEEN LINES)	
PHASE	3	DUTY	CONT	ROTOR WK ² (lb-ft ²)	30.6	TYPICAL DATA	



AMPERES SHOWN FOR **4000** VOLT CONNECTION, IF OTHER VOLTAGE CONNECTIONS ARE AVAILABLE, THE AMPERES WILL VARY INVERSELY WITH THE VOLTAGE.

REVISION 0



DR. BY CD
 CK. BY T. Kelati
 APP. BY T. Kelati
 DATE 10/22/2013

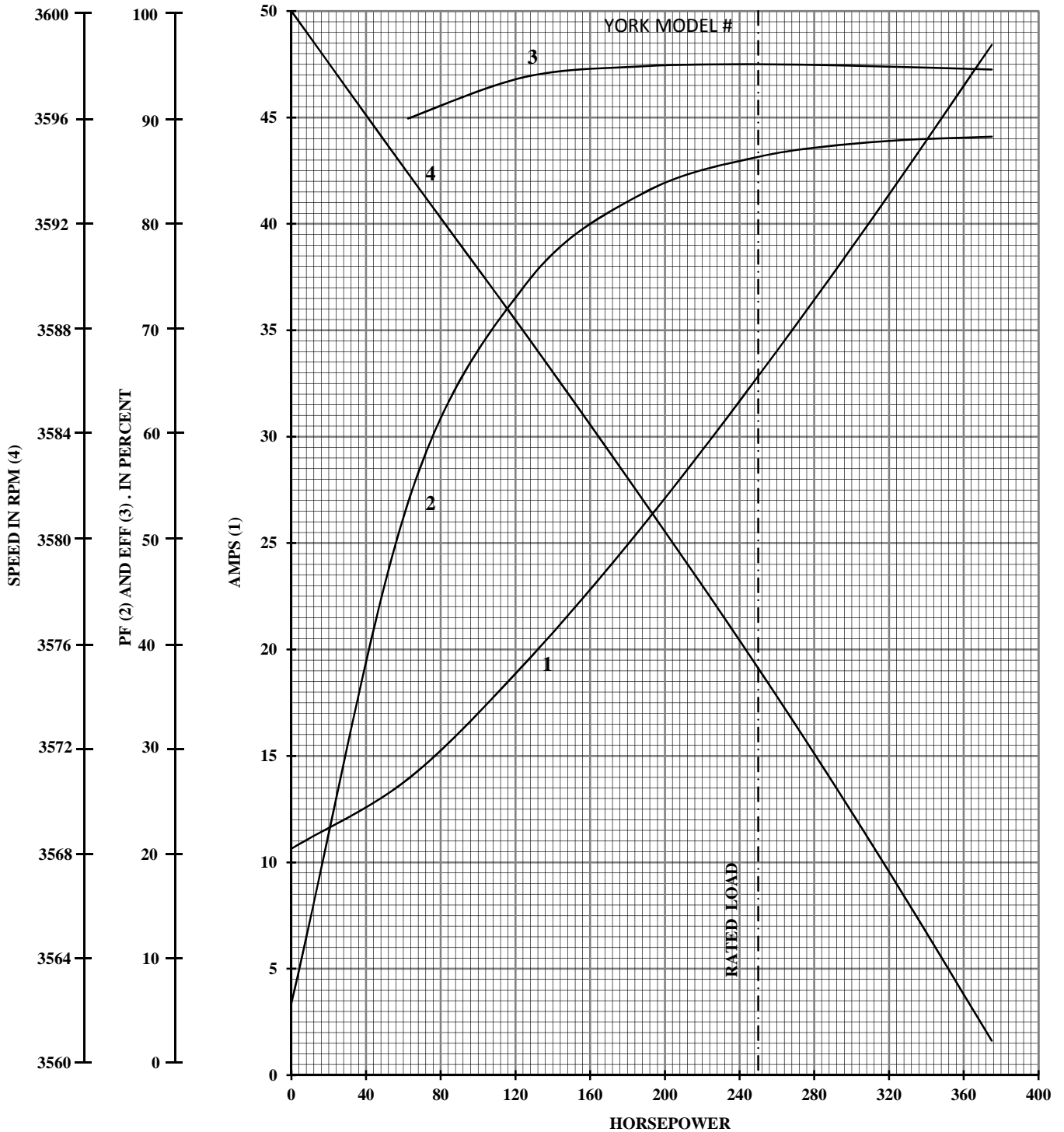
**A-C MOTOR
 PERFORMANCE
 CURVES**

A44WG5000-C001

SH 2 OF 6

ISSUE DATE 10/22/2013

B-R S.O.	QUOTE	HERTZ	60	AMB°C	40	CODE LETTER	G
FRAME	449	RPM	3575	INSUL	F	ENCLOSURE	---
HP	250	VOLTS	4000	S.F.	1.15	STATOR RES. @25°C	1.17210
TYPE	P	AMPS	32.9	NEMA DESIGN	---	OHMS (BETWEEN LINES)	
PHASE	3	DUTY	CONT	ROTOR WK ² (lb-ft ²)	30.6	TYPICAL DATA	



AMPERES SHOWN FOR **4000** VOLT CONNECTION, IF OTHER VOLTAGE CONNECTIONS ARE AVAILABLE, THE AMPERES WILL VARY INVERSELY WITH THE VOLTAGE.

REVISION 0



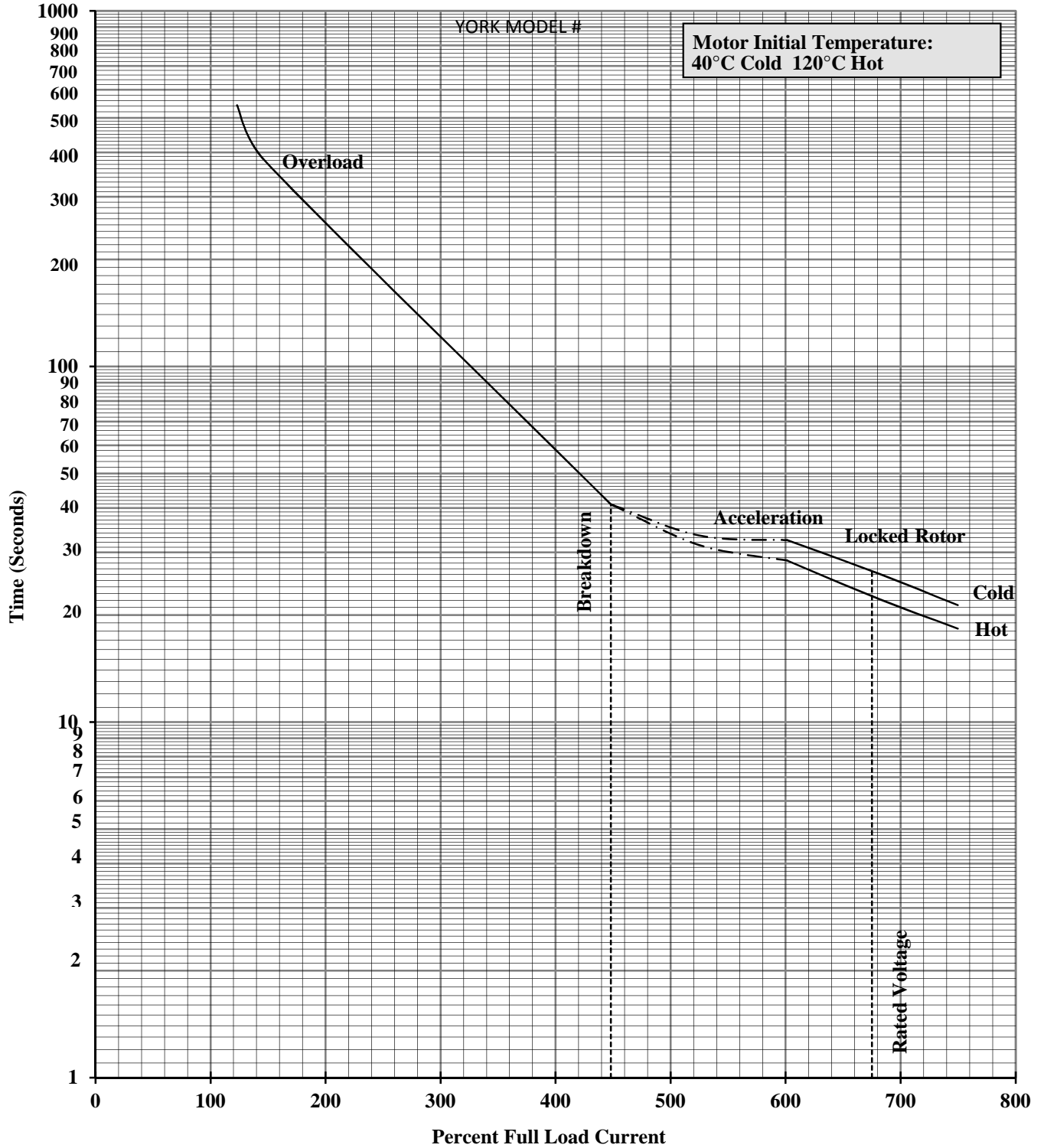
DR. BY CD
 CK. BY T. Kelati
 APP. BY T. Kelati
 DATE 10/22/2013

**A-C MOTOR
 PERFORMANCE
 CURVES**

A44WG5000-C001
 SH 3 OF 6
 ISSUE DATE 10/22/2013

B-R.S.O.	QUOTE	HERTZ	60	AMB°C	40	CODE LETTER	G
FRAME	449	RPM	3575	INSUL	F	ENCLOSURE	---
HP	250	VOLTS	4000	S.F.	1.15	STATOR RES.@25°C	1.17210
TYPE	P	AMPS	32.9	NEMA DESIGN	---	OHMS (BETWEEN LINES)	
PHASE	3	DUTY	CONT	ROTOR WK ² (lb-ft ²)	30.6	TYPICAL DATA	

THERMAL LIMIT CURVES



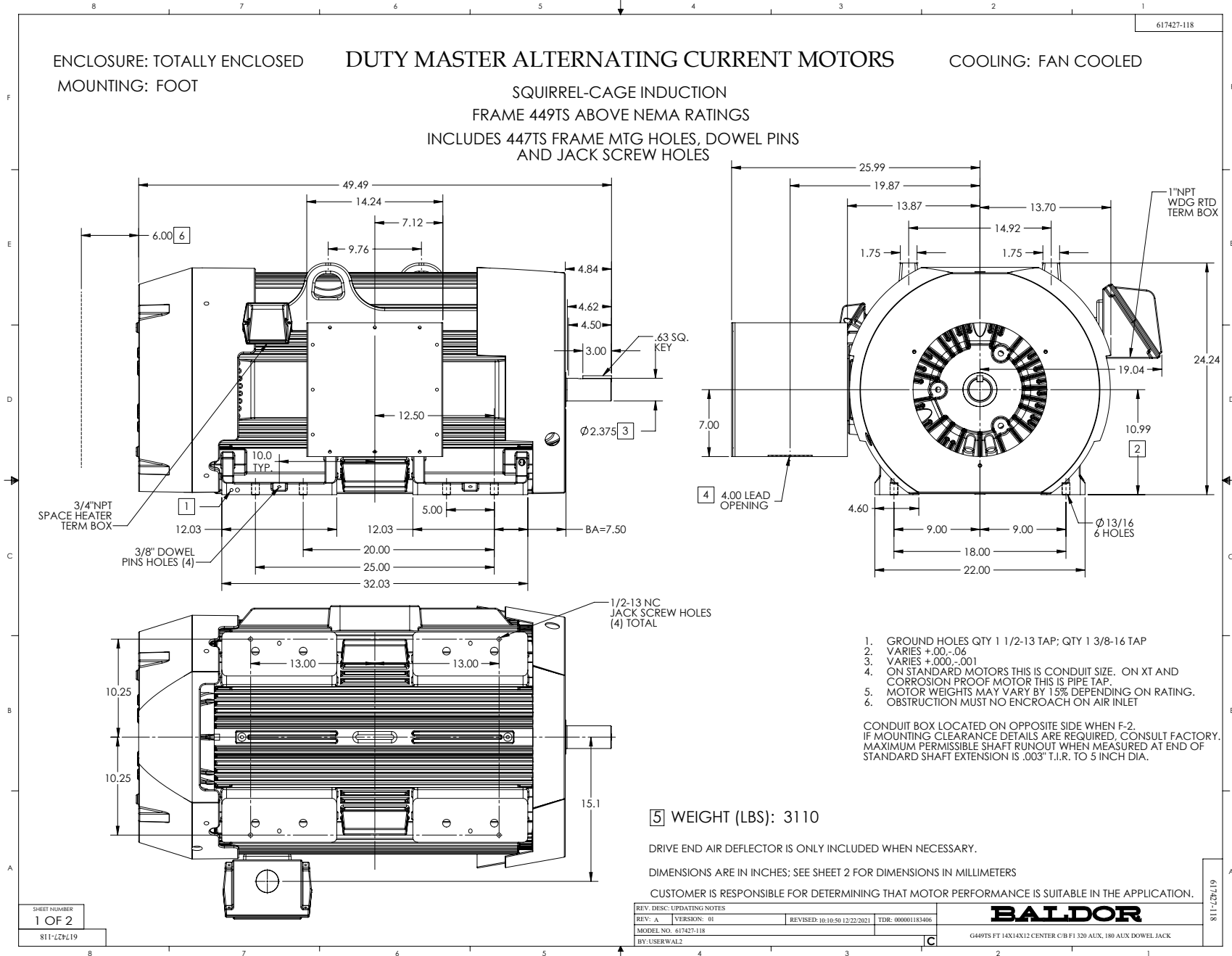
REVISION 0

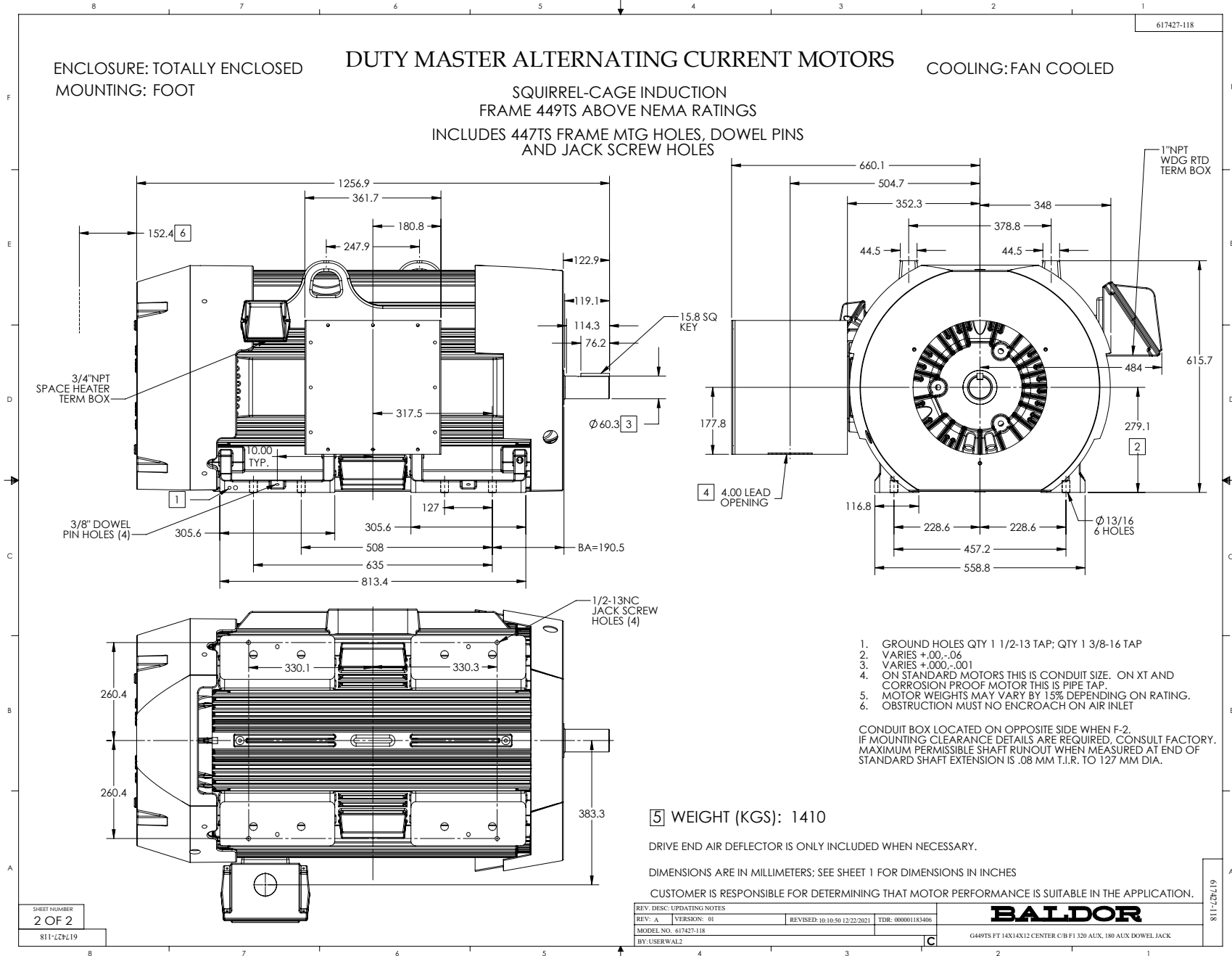


DR. BY CD
CK. BY T. Kelati
APP. BY T. Kelati
DATE 10/22/2013

**A-C MOTOR
PERFORMANCE**

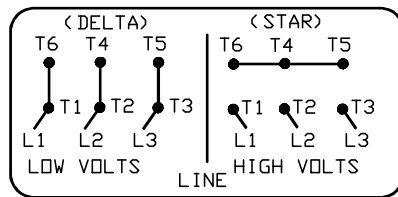
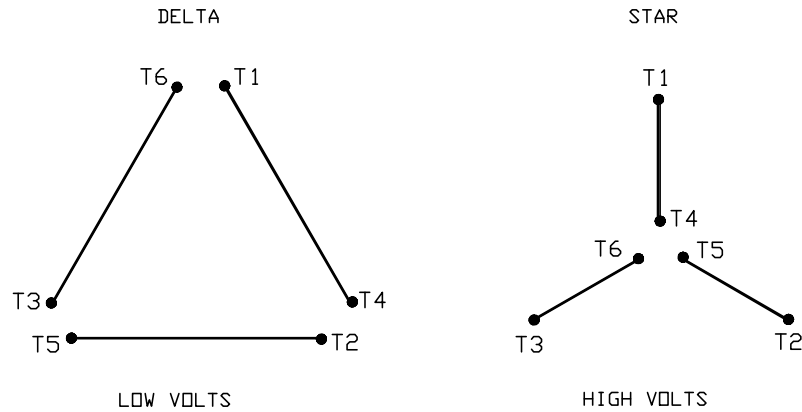
A44WG5000-C001
SH 4 OF 6
ISSUE DATE: 10/22/2013





416820-004

A-C MOTOR
CONNECTION DIAGRAM
STANDARD 6 LEAD (DELTA/STAR CONNECTED)
DUAL VOLTAGE (LOW VOLTS/HIGH VOLTS)



(N. P. 1767-CC)

REV. DESC: FONT CHANGE FOR PDF SEARCHABLE		
REV. LTR: C	VERSION: 03	TDR: 000001009406
FILE: \RSN\00017\950	REVISED: 10:55:03 12/21/2016	BY: MGHMTT
MTL: -		© □

BALDOR

A-C MOTOR CONNECTION DIAGRAM
SH 1 of 1

416820-004