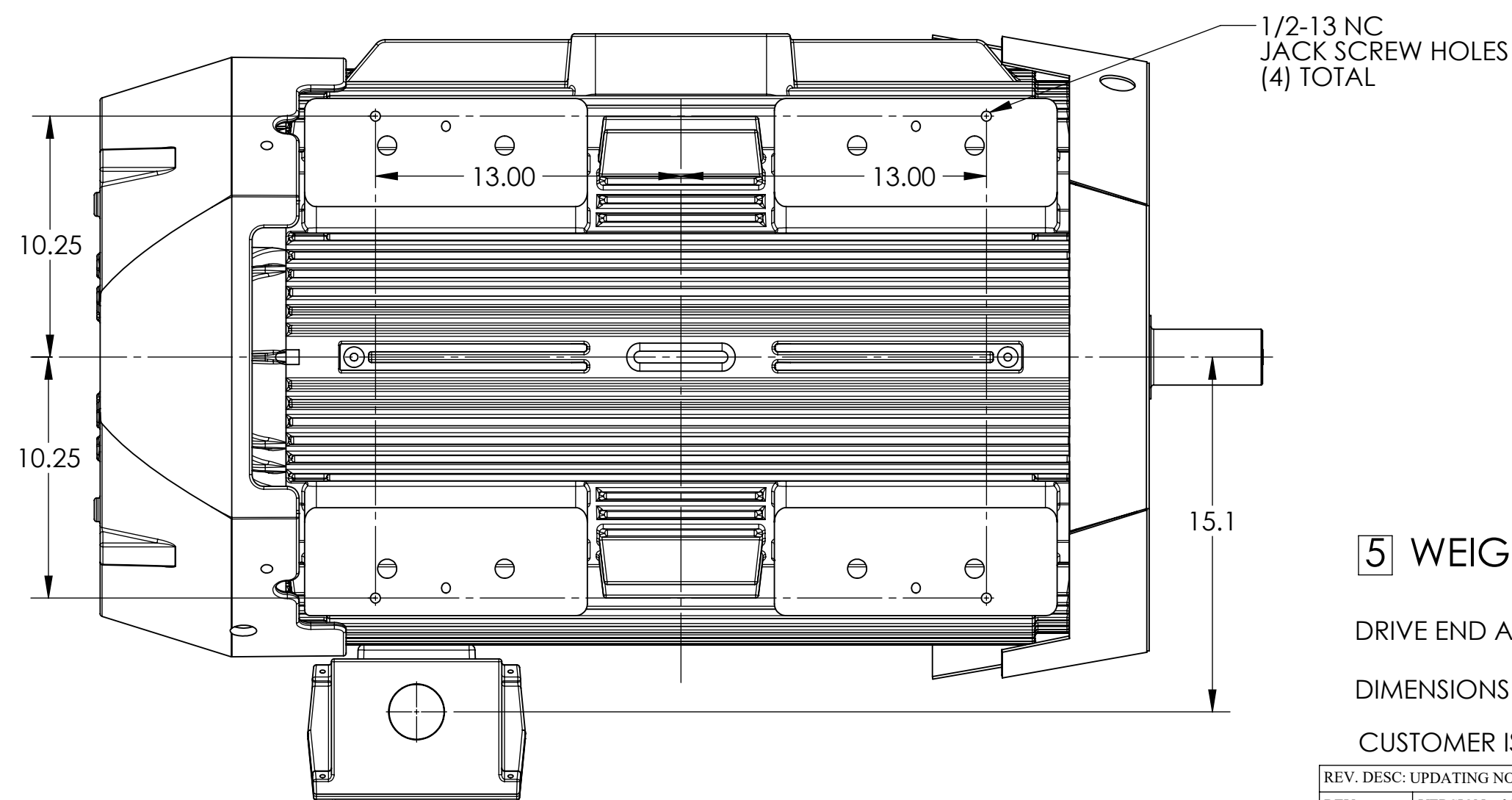
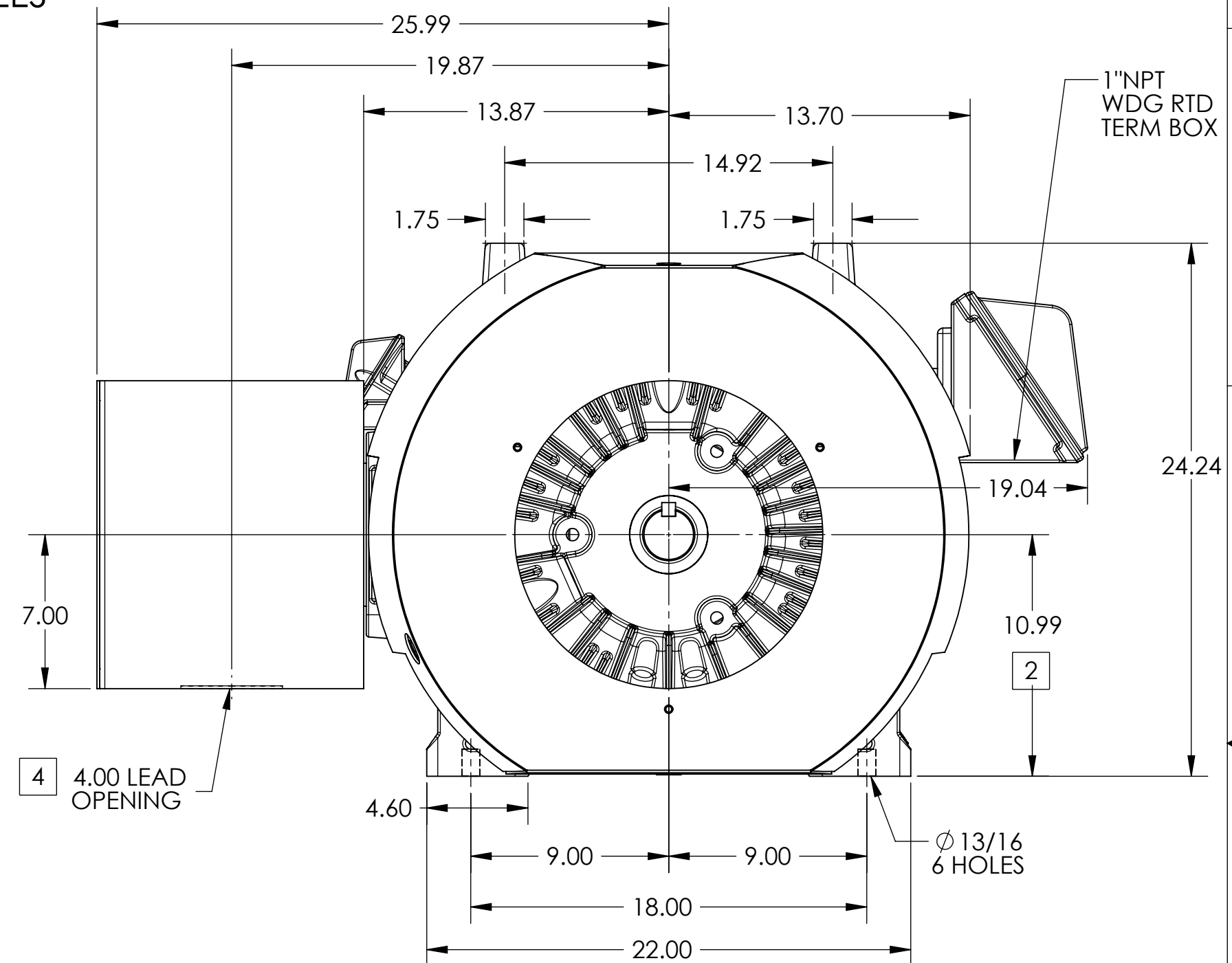
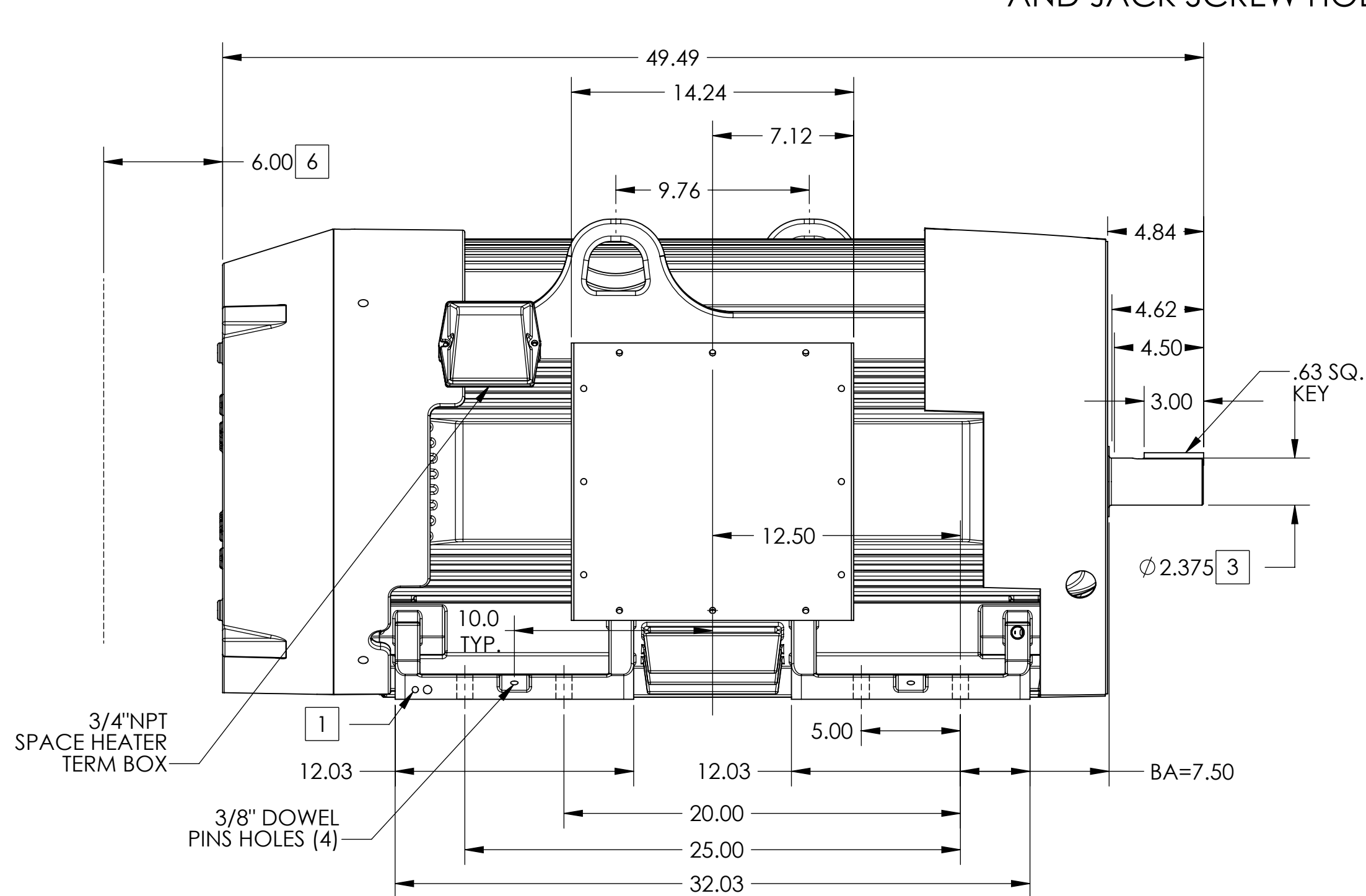


ENCLOSURE: TOTALLY ENCLOSED  
MOUNTING: FOOT

# DUTY MASTER ALTERNATING CURRENT MOTORS

COOLING: FAN COOLED

SQUIRREL-CAGE INDUCTION  
FRAME 449TS ABOVE NEMA RATINGS  
INCLUDES 447TS FRAME MTG HOLES, DOWEL PINS  
AND JACK SCREW HOLES



1. GROUND HOLES QTY 1 1/2-13 TAP; QTY 1 3/8-16 TAP
2. VARIES +.00,-.06
3. VARIES +.000,-.001
4. ON STANDARD MOTORS THIS IS CONDUIT SIZE. ON XT AND CORROSION PROOF MOTOR THIS IS PIPE TAP.
5. MOTOR WEIGHTS MAY VARY BY 15% DEPENDING ON RATING.
6. OBSTRUCTION MUST NO ENCROACH ON AIR INLET

CONDUIT BOX LOCATED ON OPPOSITE SIDE WHEN F-2.  
IF MOUNTING CLEARANCE DETAILS ARE REQUIRED, CONSULT FACTORY.  
MAXIMUM PERMISSIBLE SHAFT RUNOUT WHEN MEASURED AT END OF  
STANDARD SHAFT EXTENSION IS .003" T.I.R. TO 5 INCH DIA.

5 WEIGHT (LBS): 3110

DRIVE END AIR DEFLECTOR IS ONLY INCLUDED WHEN NECESSARY.

DIMENSIONS ARE IN INCHES; SEE SHEET 2 FOR DIMENSIONS IN MILLIMETERS

CUSTOMER IS RESPONSIBLE FOR DETERMINING THAT MOTOR PERFORMANCE IS SUITABLE IN THE APPLICATION.

SHEET NUMBER  
1 OF 2

617427-118

REV. DESC: UPDATING NOTES			
REV: A	VERSION: 01	REVISED: 10:10:50 12/22/2021	TDR: 000001183406
MODEL NO. 617427-118			
BY: USERWAL2			

**BALDOR**

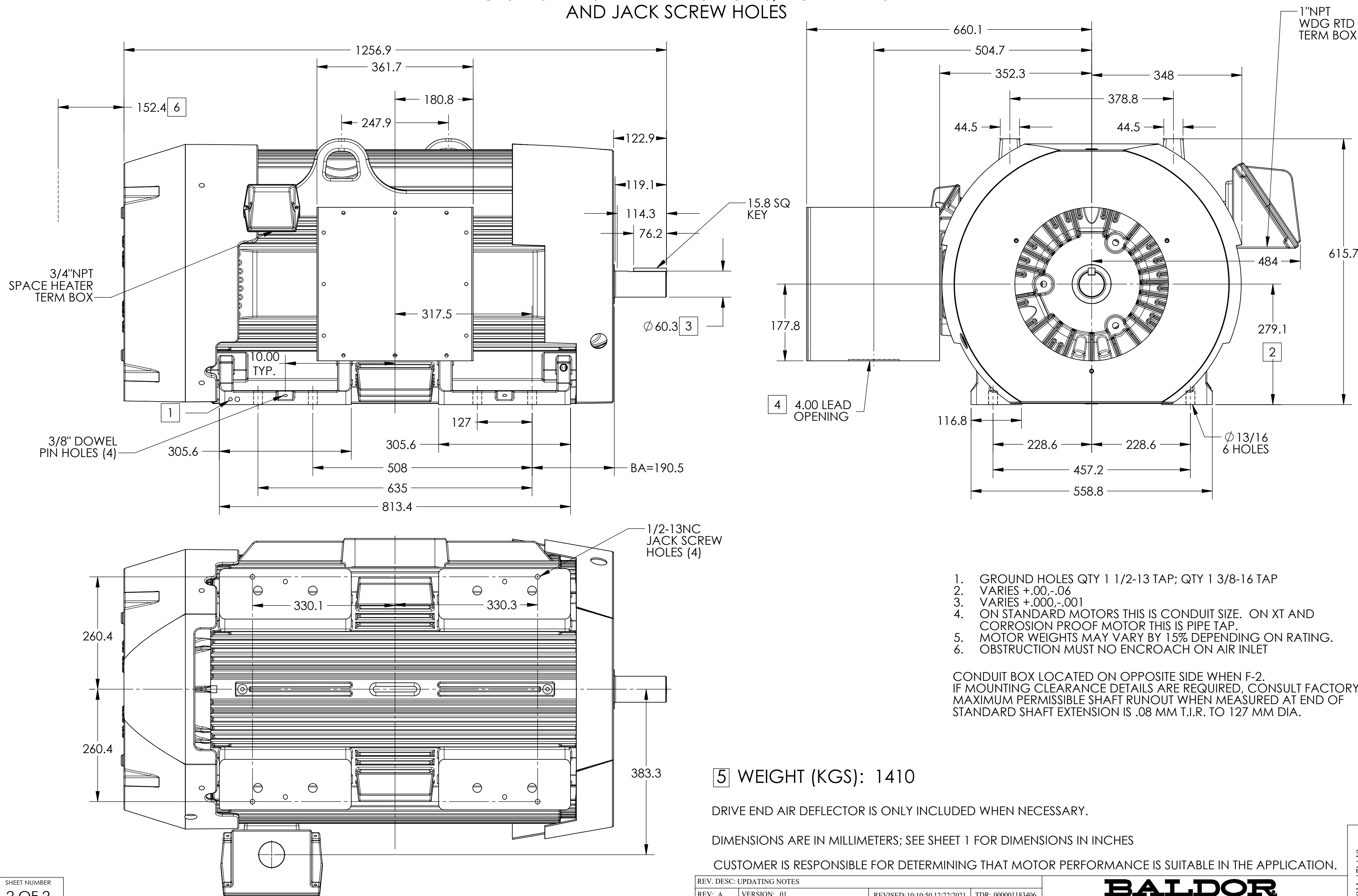
G449TS FT 14X14X12 CENTER C/B F1 320 AUX, 180 AUX DOWEL JACK

ENCLOSURE: TOTALLY ENCLOSED  
MOUNTING: FOOT

# DUTY MASTER ALTERNATING CURRENT MOTORS

COOLING: FAN COOLED

SQUIRREL-CAGE INDUCTION  
FRAME 449TS ABOVE NEMA RATINGS  
INCLUDES 447TS FRAME MTG HOLES, DOWEL PINS  
AND JACK SCREW HOLES



1. GROUND HOLES QTY 1 1/2-13 TAP; QTY 1 3/8-16 TAP
2. VARIES +.00,-.06
3. VARIES +.000,-.001
4. ON STANDARD MOTORS THIS IS CONDUIT SIZE. ON XT AND CORROSION PROOF MOTOR THIS IS PIPE TAP.
5. MOTOR WEIGHTS MAY VARY BY 15% DEPENDING ON RATING.
6. OBSTRUCTION MUST NO ENCROACH ON AIR INLET

CONDUIT BOX LOCATED ON OPPOSITE SIDE WHEN F-2.  
IF MOUNTING CLEARANCE DETAILS ARE REQUIRED, CONSULT FACTORY.  
MAXIMUM PERMISSIBLE SHAFT RUNOUT WHEN MEASURED AT END OF  
STANDARD SHAFT EXTENSION IS .08 MM T.I.R. TO 127 MM DIA.

**5 WEIGHT (KGS): 1410**

DRIVE END AIR DEFLECTOR IS ONLY INCLUDED WHEN NECESSARY.

DIMENSIONS ARE IN MILLIMETERS; SEE SHEET 1 FOR DIMENSIONS IN INCHES

CUSTOMER IS RESPONSIBLE FOR DETERMINING THAT MOTOR PERFORMANCE IS SUITABLE IN THE APPLICATION.

REV. DESC: UPDATING NOTES			
REV: A	VERSION: 01	REVISED: 10:10:50 12/22/2021	TDR: 000001183406
MODEL NO. 617427-118			
BY: USERWAL2			

**BALDOR**

G449TS FT 14X14X12 CENTER C/B F1 320 AUX, 180 AUX DOWEL JACK