

ABB BALDOR RELIANCE III

Customer information packet

EM44252T-4

250HP, 3570RPM, 3PH, 60HZ, 449TS, TEFC, F1

Class - None

Division - Not Applicable

Specifications

Enclosure	TEFC
Frame	449TS
Frame Material	Iron
Frequency	60.00 Hz
Haz Area Class and Group	None
Haz Area Division	Not Applicable
Motor Letter Type	Three Phase
Output @ Frequency	250.000 HP @ 60 HZ
Phase	3
Synchronous Speed @ Frequency	3600 RPM @ 60 HZ
Voltage @ Frequency	460.0 V @ 60 HZ
Agency Approvals	CURUSEEV
Ambient Temperature	40 °C
Auxiliary Box	NO AUXILLARY BOX
Base Indicator	Rigid
Bearing Grease Type	Polyrex EM (-20F +300F)
Current @ Voltage	268.000 A @ 460.0 V
Design Code	B
Drip Cover	No Drip Cover
Duty Rating	CONT
Efficiency @ 100% Load	95.8 %
Feedback Device	NO FEEDBACK
Heater Indicator	No Heater
High Voltage Full Load Amps	268.0 a
Insulation Class	F
Inverter Code	Not Inverter
IP Rating	NONE
KVA Code	F
Motor Lead Quantity/Wire Size	6 @ 3/0 AWG
Motor Standards	NEMA
Motor Type	A44128M
Mounting Arrangement	F1

Part Detail

Revision	E
Type	AC
Mech. spec.	
Base	
Status	PRD/A
Elec. spec.	A44WG2749
Layout	617427-460
Eff. date	09-25-2025
CD Diagram	416820-036
Poles	02
Leads	3#3/0 (02 per group)
Proprietary	False
Created date	04-02-2015

Number of Poles	2
Overall Length	49.71 IN
Power Factor	91
Product Family	General Industrial
Pulley End Bearing Type	Ball
Pulley Face Code	Standard
Service Factor	1.15
Shaft Diameter	2.375 IN
Shaft Ground Indicator	No Shaft Grounding
Shaft Rotation	Reversible
Shaft Slinger Indicator	No Slinger
Speed	3570 rpm
Speed Code	Single Speed
Starting Method	Direct on line
Thermal Device - Bearing	None
Thermal Device - Winding	None

Nameplate

NP2496L
MOBIL POLYREX EM

NP2349L

SPEC NO.	A44-7088-2749	CAT.NO.	EM44252T-4	FRAME	449TS
HP	250	VOLTS	460	PHASE	3
RPM	3570	AMPS	268	DESIGN	B
DRIVE END BEARING	65BC03J30X	DUTY	CONT	TYPE	P
OPP D.E. BEARING	65BC03J30X	ENCL	TEFC	INSUL.CLASS	F
SER.NO.		CODE	F	AMB	40
		POWER FACTOR	91	SF	1.15
				NEMA-NOM-EFFICIENCY	95.8
				MAX CORR KVAR	24
				GUARANTEED EFFICIENCY	95
				NEMA NOM/CSA QUOTED EFF	
				MOTOR WEIGHT	

REL. S.O.	FRAME	HP	TYPE	PHASE/ HERTZ	RPM	VOLTS
	449TS	250	P	3/60	3570	460
AMPS	DUTY	AMB °C/ INSUL.	S.F.	NEMA DESIGN	CODE LETTER	ENCL.
268	CONT	40/F	1.15	B	F	TEFC
E/S	ROTOR	TEST S.O.	TEST DATE	STATOR RES. @25 °C OHMS (BETWEEN LINES)		
433537	418143-13-NE	---	---	.00996		

PERFORMANCE

LOAD	HP	AMPERES	RPM	% POWER FACTOR	% EFFICIENCY
NO LOAD	0	52.6	3600	8.53	0
1/4	62.5	82.6	3593	76.7	92.4
2/4	125	138	3587	89.3	95.3
3/4	188	200	3580	91.4	95.9
4/4	250	268	3572	91.0	95.9
5/4	312	337	3564	90.8	95.7

SPEED TORQUE

	RPM	TORQUE % FULL LOAD	TORQUE LB.-FT.	AMPERES
LOCKED ROTOR	0	191	702	1651
PULL UP	2550	169	620	1371
BREAKDOWN	3472	227	835	831
FULL LOAD	3572	100	368	268

AMPERES SHOWN FOR 460. VOLT CONNECTION. IF OTHER VOLTAGE CONNECTIONS ARE AVAILABLE, THE AMPERES WILL VARY INVERSELY WITH THE RATED VOLTAGE

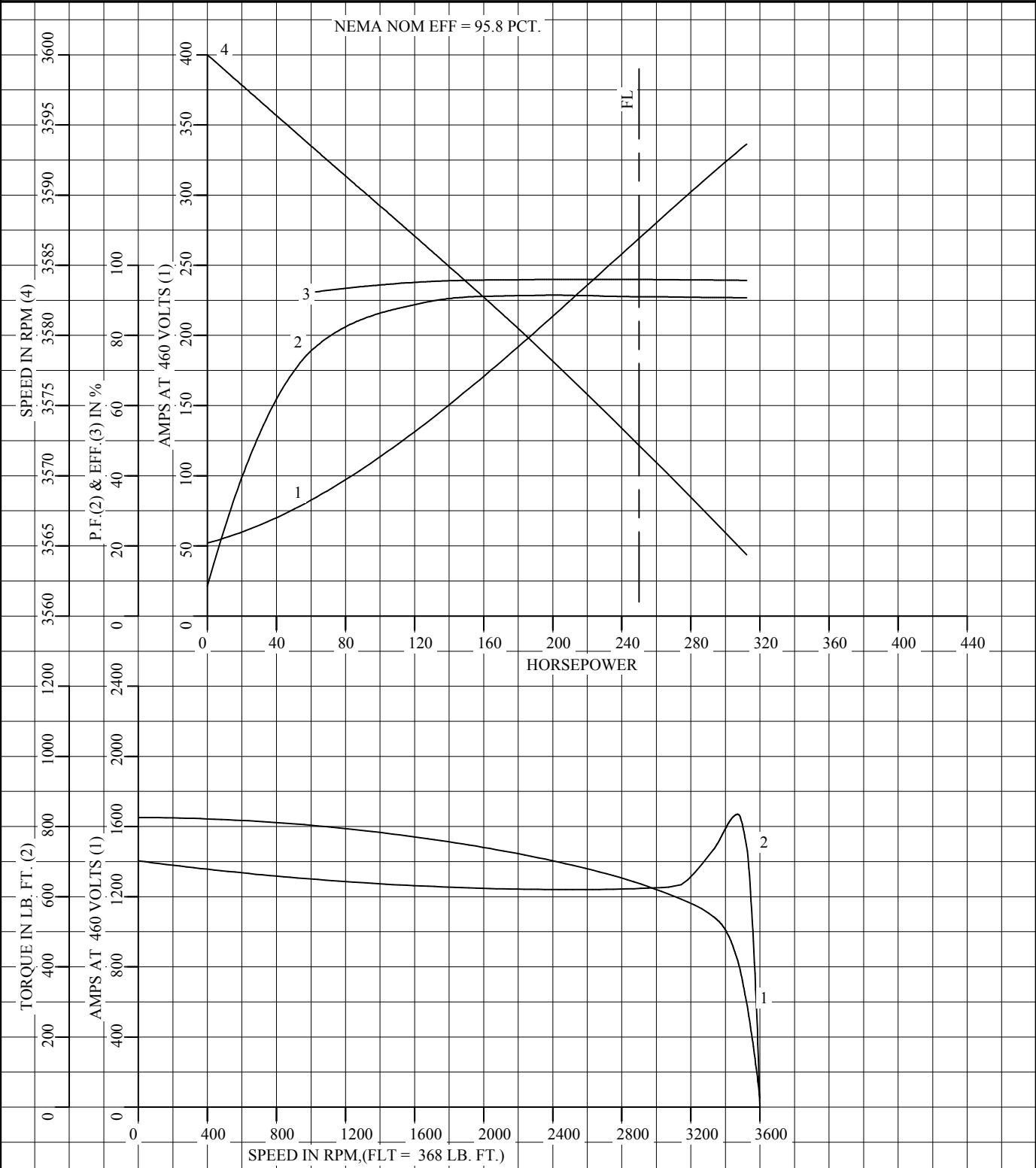
REMARKS: TYPICAL DATA
NEMA NOM EFF = 95.8 PCT.



DR. BY W. L. SMITH
CK. BY J. J. HARRISON
APP. BY W. L. SMITH
DATE 07/26/07

**A-C MOTOR
PERFORMANCE DATA** A44WG2749-R006
ISSUE DATE 09/22/17

REL S.O.	RPM 3570	S.F. 1.15	ROTOR 418143-13-NE
FRAME 449TS	VOLTS 460	NEMA DESIGN B	TEST S.O. TYPICAL DATA
HP 250	AMPS 268	CODE LETTER F	TEST DATE ---
TYPE P	DUTY CONT	ENCLOSURE TEFC	STATOR RES. @ 25 °C .00996
PHASE/HERTZ 3/60	AMB °C/INSUL 40/F	E/S 433537	OHMS (BETWEEN LINES)



AMPERES SHOWN FOR 460 VOLT CONNECTION, IF OTHER VOLTAGE CONNECTIONS ARE AVAILABLE, THE AMPERES WILL VARY INVERSELY WITH THE RATED VOLTAGE.



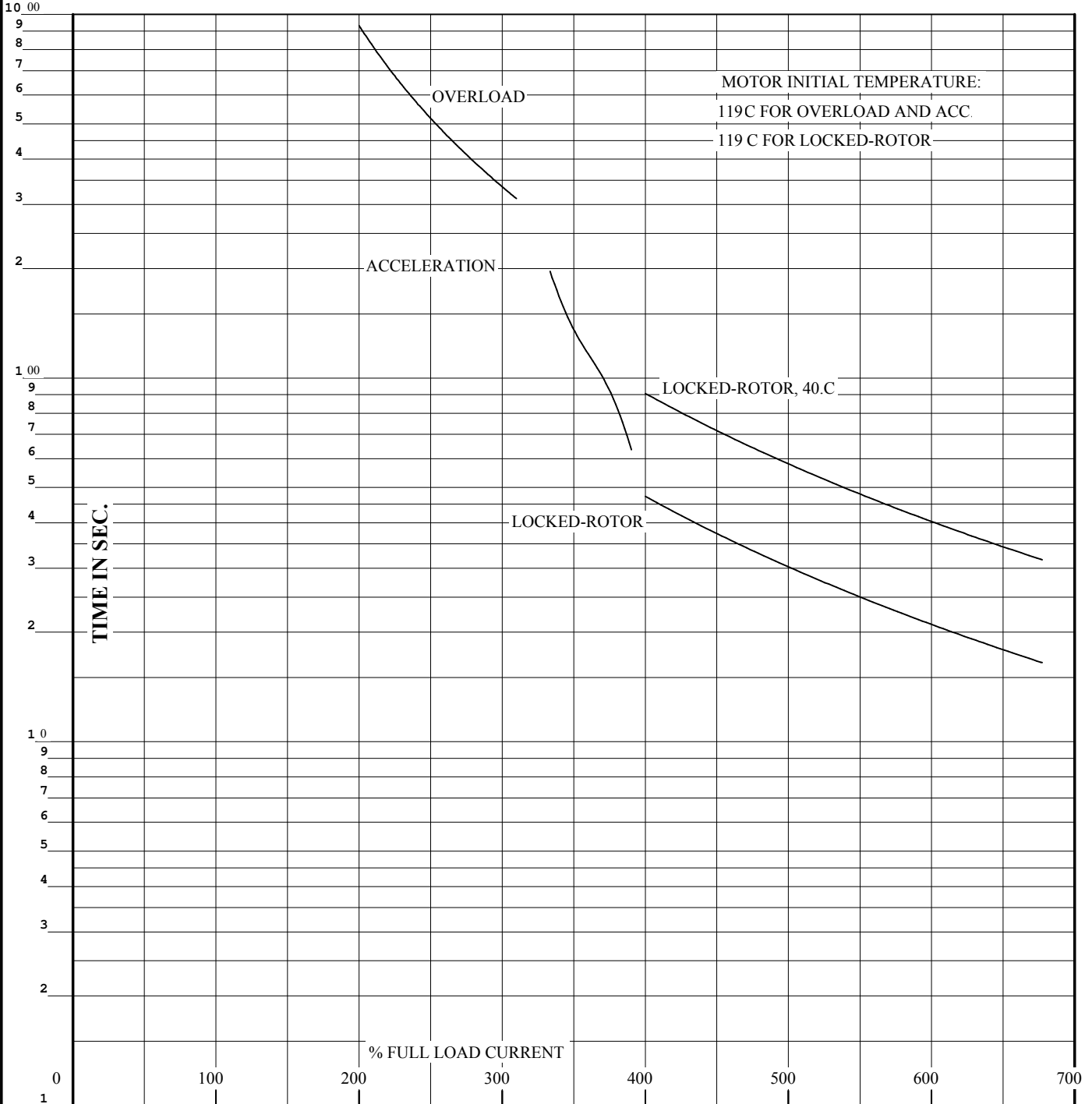
DR. BY W. L. SMITH
 CK. BY J.J.HARRISON
 APP. BY W. L. SMITH
 DATE 07/26/07

**A-C MOTOR
 PERFORMANCE
 CURVES**

A44WG2749-R006

ISSUE DATE 09/22/17 Page 7 of 10

REL. S.O.	RPM 3570	S.F. 1.15	ROTOR 418143-13-NE
FRAME 449TS	VOLTS 460	NEMA DESIGN B	TEST S.O. TYPICAL DATA
HP 250	AMPS 268	CODE LETTER F	TEST DATE ---
TYPE P	DUTY CONT	ENCLOSURE TEFC	STATOR RES. @ 25 °C .00996
PHASE/HERTZ 3/60	AMB °C/INSUL 40/F	E/S 433537	OHMS (BETWEEN LINES)



THERMAL LIMIT CURVE

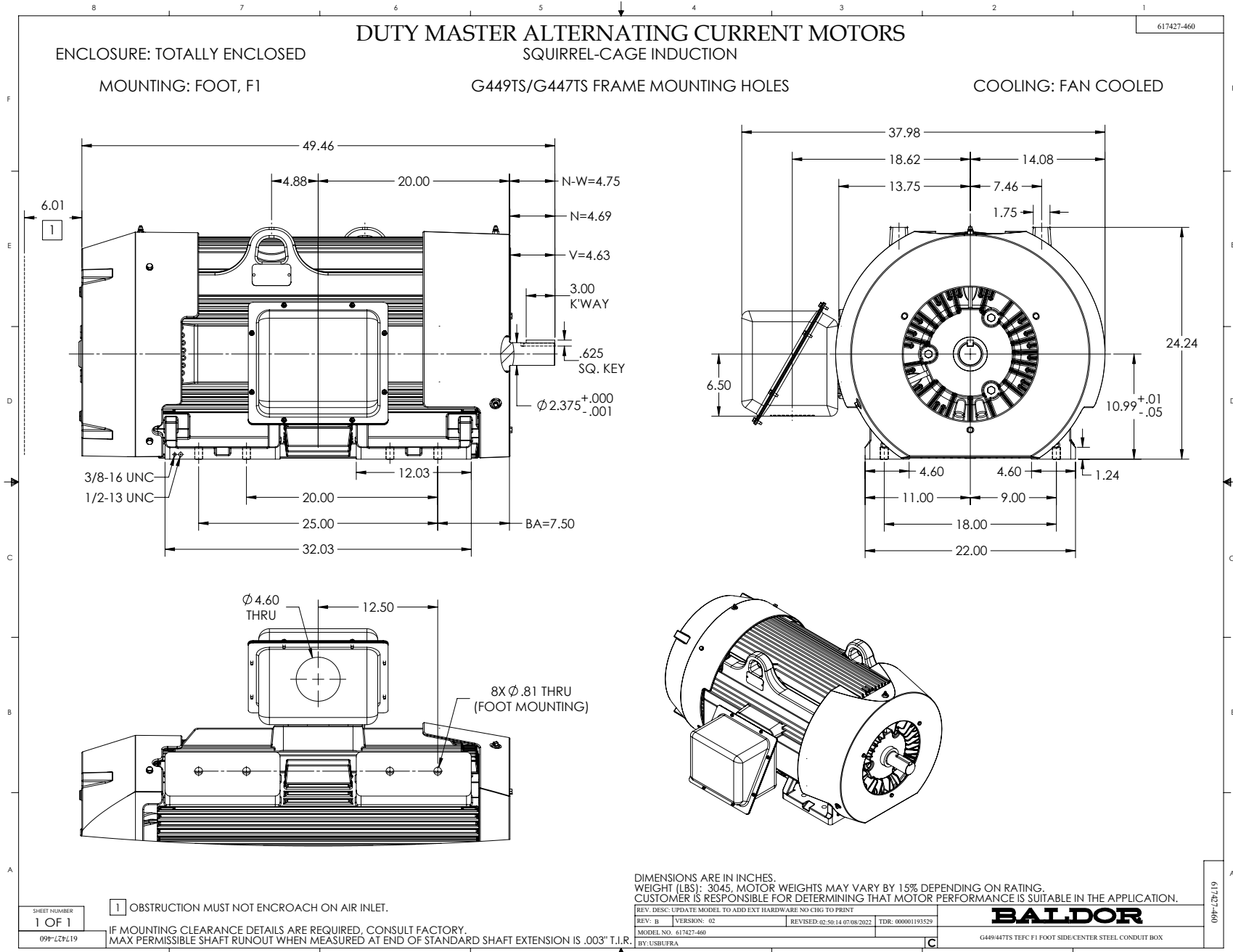
REMARKS: NEMA NOM EFF = 95.8 PCT.

AMPERES SHOWN FOR 460 VOLT CONNECTION, IF OTHER VOLTAGE CONNECTIONS ARE AVAILABLE, THE AMPERES WILL VARY INVERSELY WITH THE RATED VOLTAGE.



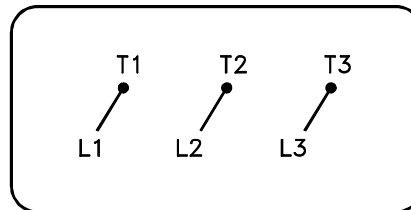
DR. BY	W. L. SMITH
CK. BY	J.J.HARRISON
APP. BY	W. L. SMITH
DATE	07/26/07

**A-C MOTOR
PERFORMANCE CURVES** A44WG2749-R006
ISSUE DATE 09/22/17 Page 8 of 10



416820-036

**A-C MOTOR
CONNECTION DIAGRAM
STANDARD 3 LEAD CONNECTED**



(N.P. 1575-BA)

416820-036

REV. DESC: LOADED TO BUS, C/R 335225		
REV. LTR: -	VERSION: 00	TDR: 000000538207
FILE: \MGA\00000\682	REVISED: 11:54:06 04/30/2010	
MTL: -	BY: RAGRA	

BALDOR

CONN DIAG - STANDARD 3 LEAD
SH 1 of 1