

DUTY MASTER ALTERNATING CURRENT MOTORS
SQUIRREL-CAGE INDUCTION

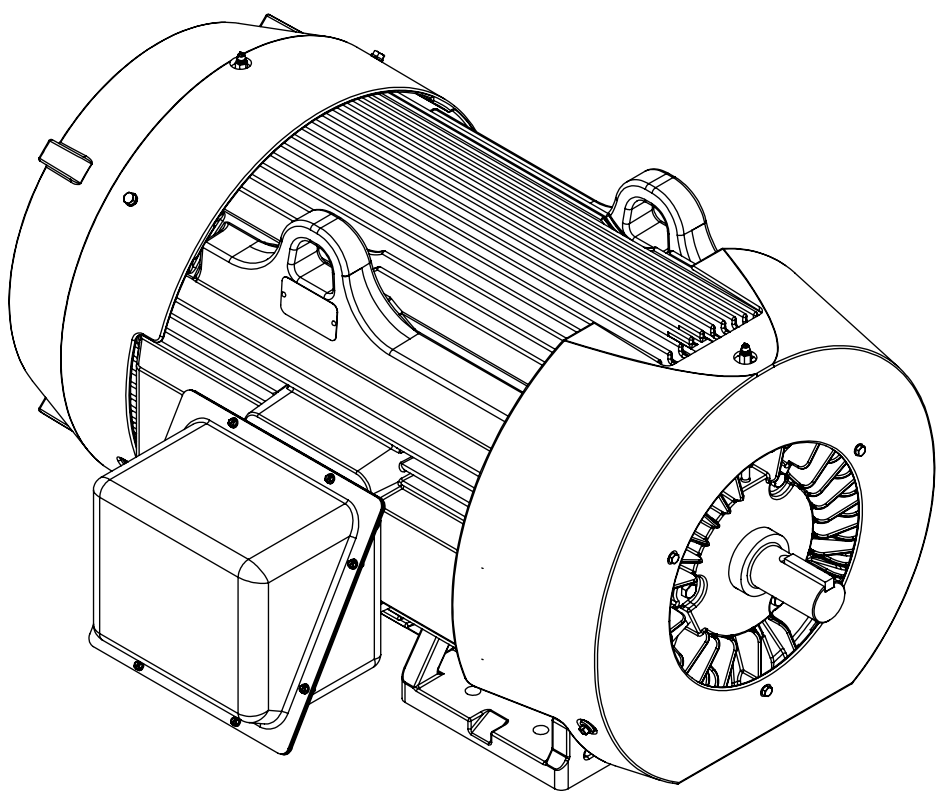
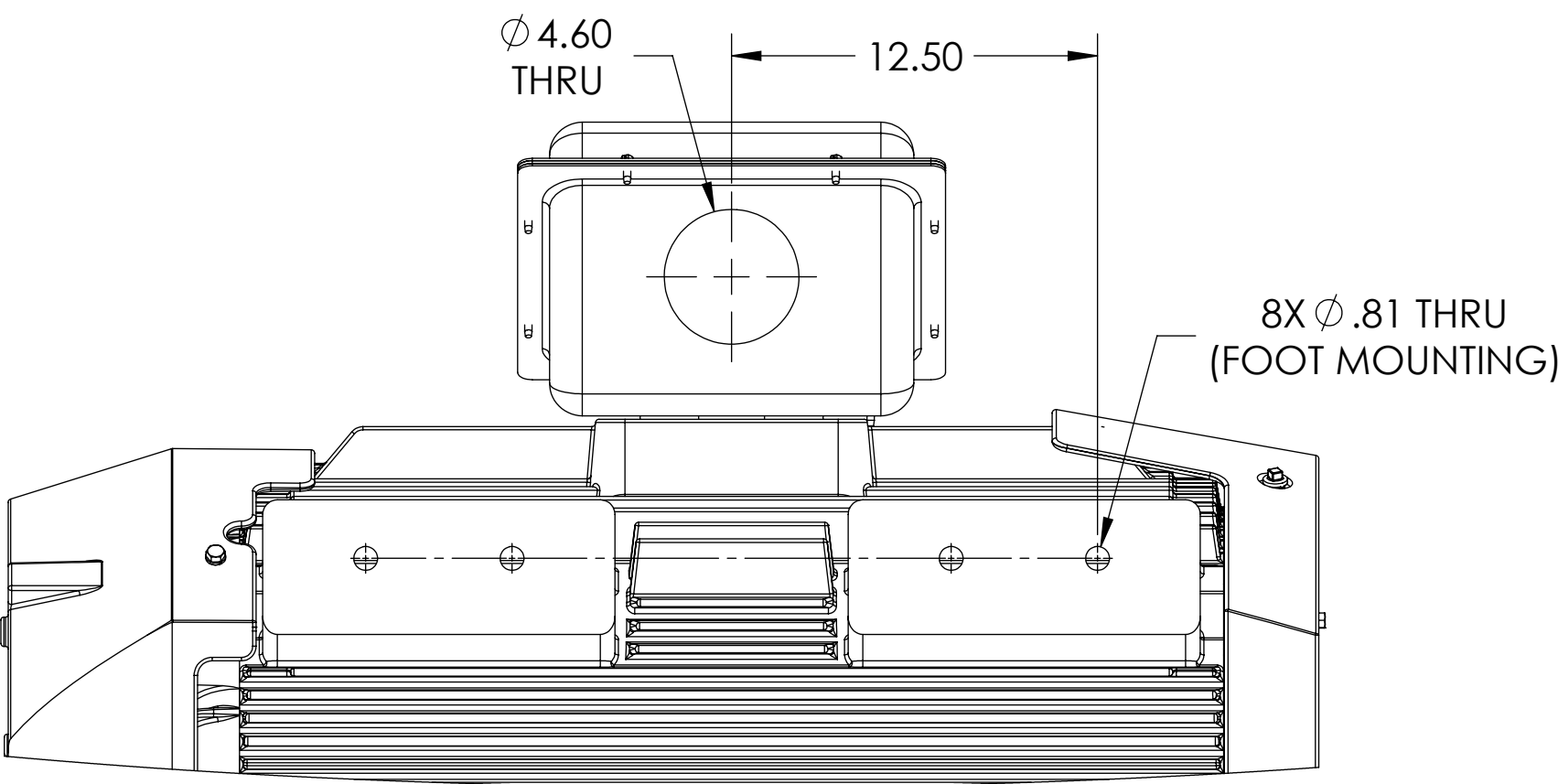
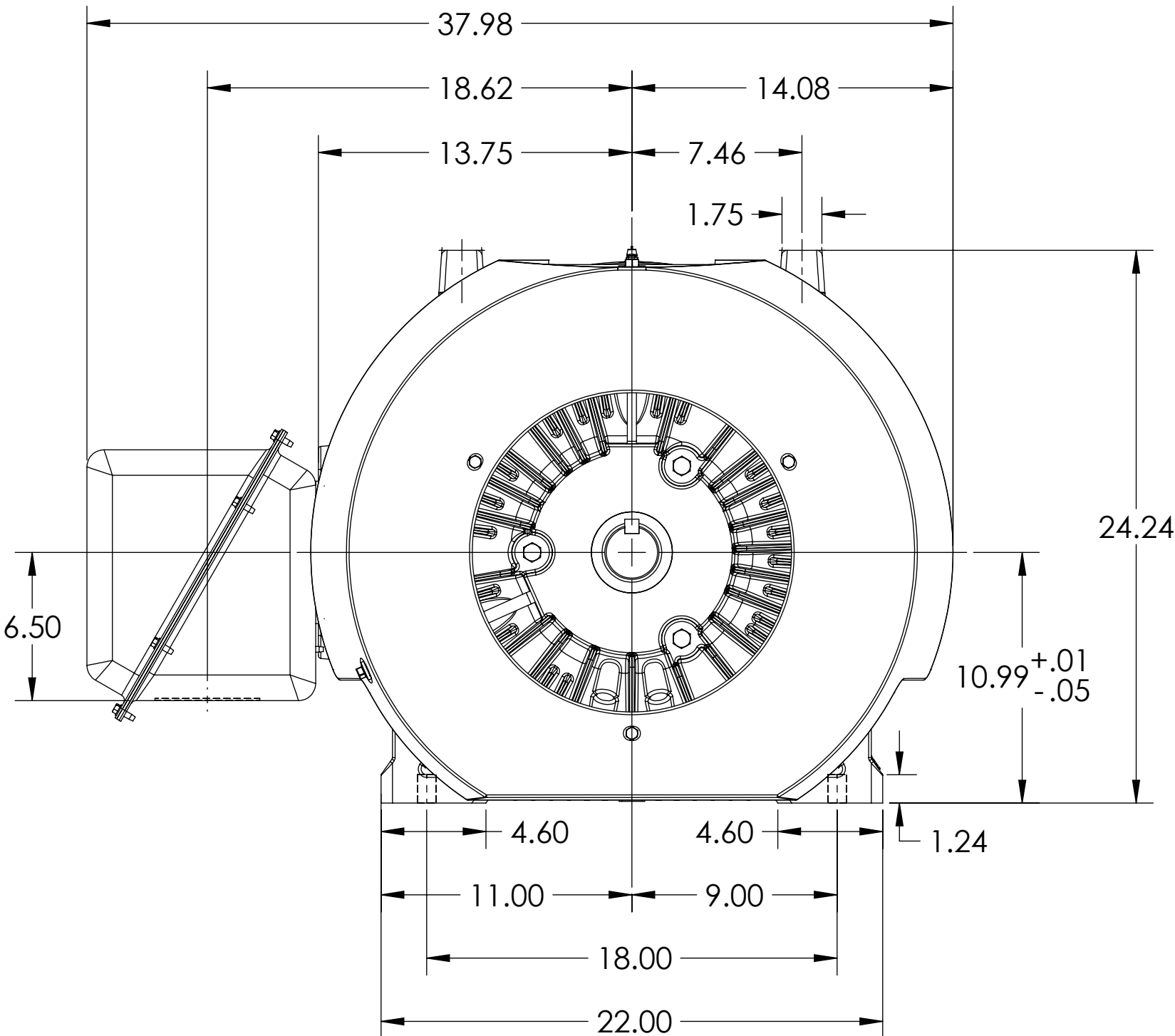
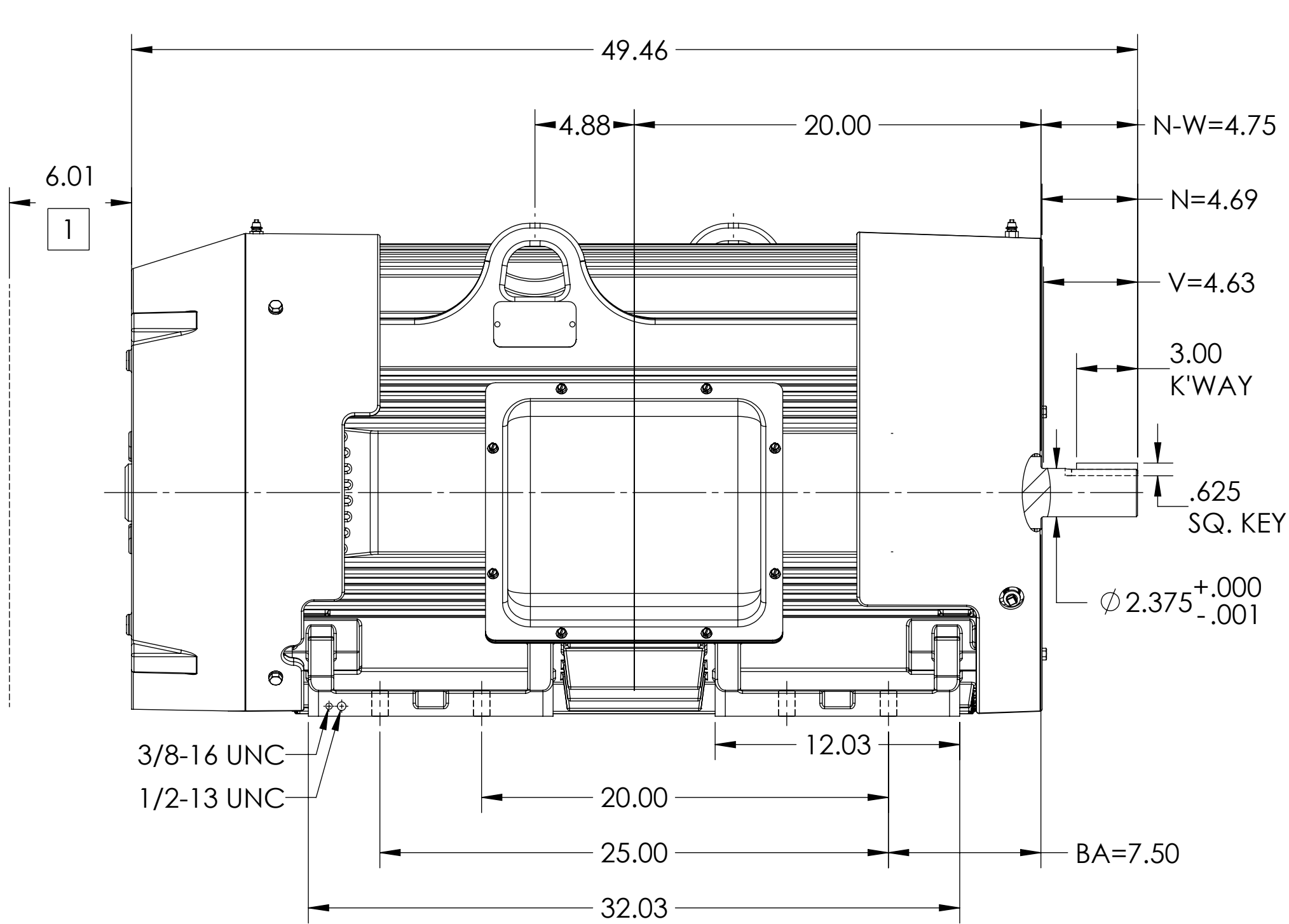
617427-460

ENCLOSURE: TOTALLY ENCLOSED

MOUNTING: FOOT, F1

G449TS/G447TS FRAME MOUNTING HOLES

COOLING: FAN COOLED



DIMENSIONS ARE IN INCHES.
WEIGHT (LBS): 3045, MOTOR WEIGHTS MAY VARY BY 15% DEPENDING ON RATING.
CUSTOMER IS RESPONSIBLE FOR DETERMINING THAT MOTOR PERFORMANCE IS SUITABLE IN THE APPLICATION.

| | | | |
|---|-------------|------------------------------|-------------------|
| REV. DESC: UPDATE MODEL TO ADD EXT HARDWARE NO CHG TO PRINT | | | |
| REV: B | VERSION: 02 | REVISED: 02:50:14 07/08/2022 | TDR: 000001193529 |
| MODEL NO. 617427-460 | | | |
| BY: USBUFRA | | | |

BALDOR

G449/447TS TEFC F1 FOOT SIDE/CENTER STEEL CONDUIT BOX

SHEET NUMBER
1 OF 1

617427-460

1 OBSTRUCTION MUST NOT ENCROACH ON AIR INLET.

IF MOUNTING CLEARANCE DETAILS ARE REQUIRED, CONSULT FACTORY.
MAX PERMISSIBLE SHAFT RUNOUT WHEN MEASURED AT END OF STANDARD SHAFT EXTENSION IS .003" T.I.R.

617427-460