

ABB BALDOR RELIANCE III

Customer information packet

EM44206T-4

200HP, 1190RPM, 3PH, 60HZ, 449T, A44160M, TEFC

Class - None

Division - Not Applicable

Specifications

Enclosure	TEFC
Frame	449T
Frame Material	Iron
Frequency	60.00 Hz
Haz Area Class and Group	None
Haz Area Division	Not Applicable
Motor Letter Type	Three Phase
Output @ Frequency	200.000 HP @ 60 HZ
Phase	3
Synchronous Speed @ Frequency	1200 RPM @ 60 HZ
Voltage @ Frequency	460.0 V @ 60 HZ
Agency Approvals	CCSAUSEEV CURUSEEV
Ambient Temperature	40 °C
Auxiliary Box	NO AUXILLARY BOX
Base Indicator	Rigid
Bearing Grease Type	Polyrex EM (-20F +300F)
Current @ Voltage	225.000 A @ 460.0 V
Design Code	B
Drip Cover	No Drip Cover
Duty Rating	CONT
Efficiency @ 100% Load	95.8 %
Enclosure Modification	Severe Duty Features
Feedback Device	NO FEEDBACK
Heater Indicator	No Heater
High Voltage Full Load Amps	225.0 a
Insulation Class	F
Inverter Code	Inverter Duty
KVA Code	G
Lifting Lugs	No Lifting Lugs
Motor Lead Quantity/Wire Size	6 @ 1 AWG
Motor Standards	NEMA

Part Detail

Revision	V
Type	AC
Mech. spec.	
Base	
Status	PRD/A
Elec. spec.	A44WG1497
Layout	617427-190
Eff. date	11-24-2025
CD Diagram	416820-036
Poles	06
Leads	3#1 (02 per group)
Proprietary	False
Created date	08-14-2012

Motor Type	A44160M
Mounting Arrangement	F1
Number of Poles	6
Overall Length	53.24 IN
Power Factor	87
Pulley End Bearing Type	Ball
Pulley Face Code	Standard
Service Factor	1.15
Shaft Diameter	3.375 IN
Shaft Ground Indicator	No Shaft Grounding
Shaft Rotation	Reversible
Shaft Slinger Indicator	No Slinger
Speed	1190 rpm
Speed Code	Single Speed
Starting Method	Direct on line
Thermal Device - Bearing	None
Thermal Device - Winding	None

Nameplate

NP2349L

SPEC NO.	P44G3915	CAT.NO.	EM44206T-4	FRAME	449T				
HP	200	VOLTS	460	PHASE	3	DESIGN	B	TYPE	P
RPM	1190	AMPS	225	HZ	60	AMB	40	SF	1.15
DRIVE END BEARING	90BC03J30X	DUTY	CONT	INSUL.CLASS	F				
OPP D.E. BEARING	90BC03J30X	ENCL	TEFC	CODE	G				
SER.NO.		POWER FACTOR	87	NEMA-NOM-EFFICIENCY	95.8				
		MAX CORR KVAR	35.0	GUARANTEED EFFICIENCY	95.0				
		NEMA NOM/CSA QUOTED EFF							
		MOTOR WEIGHT							

Accessories

Part number	Description	Multiplier
089490106A	G28 C-FACE BRKT MACH-6318 089490105WCA	P1
089490110A	D-FLANGE BRKT, G28 089490109WCA	P1

REL. S.O.	FRAME	HP	TYPE	PHASE/ HERTZ	RPM	VOLTS
	449T	200	P	3/60	1190	460
AMPS	DUTY	AMB °C/ INSUL.	S.F.	NEMA DESIGN	CODE LETTER	ENCL.
225	CONT	40/F	1.15	B	G	TEFC
E/S	ROTOR	TEST S.O.	TEST DATE	STATOR RES. @25 °C OHMS (BETWEEN LINES)		
833245	418143-98-XE	---	---	.0220		

PERFORMANCE

LOAD	HP	AMPERES	RPM	% POWER FACTOR	% EFFICIENCY
NO LOAD	0	56.0	1200	4.16	0
1/4	50.1	86.8	1197	57.2	94.4
2/4	100	126	1194	77.3	96.1
3/4	150	173	1191	84.2	96.1
4/4	200	226	1188	86.6	95.8
5/4	250	282	1185	87.2	95.2

SPEED TORQUE

	RPM	TORQUE % FULL LOAD	TORQUE LB.-FT.	AMPERES
LOCKED ROTOR	0	132	1163	1422
PULL UP	240	96.3	850	1408
BREAKDOWN	1150	243	2149	811
FULL LOAD	1188	100	883	226

AMPERES SHOWN FOR 460. VOLT CONNECTION. IF OTHER VOLTAGE CONNECTIONS ARE AVAILABLE, THE AMPERES WILL VARY INVERSELY WITH THE RATED VOLTAGE

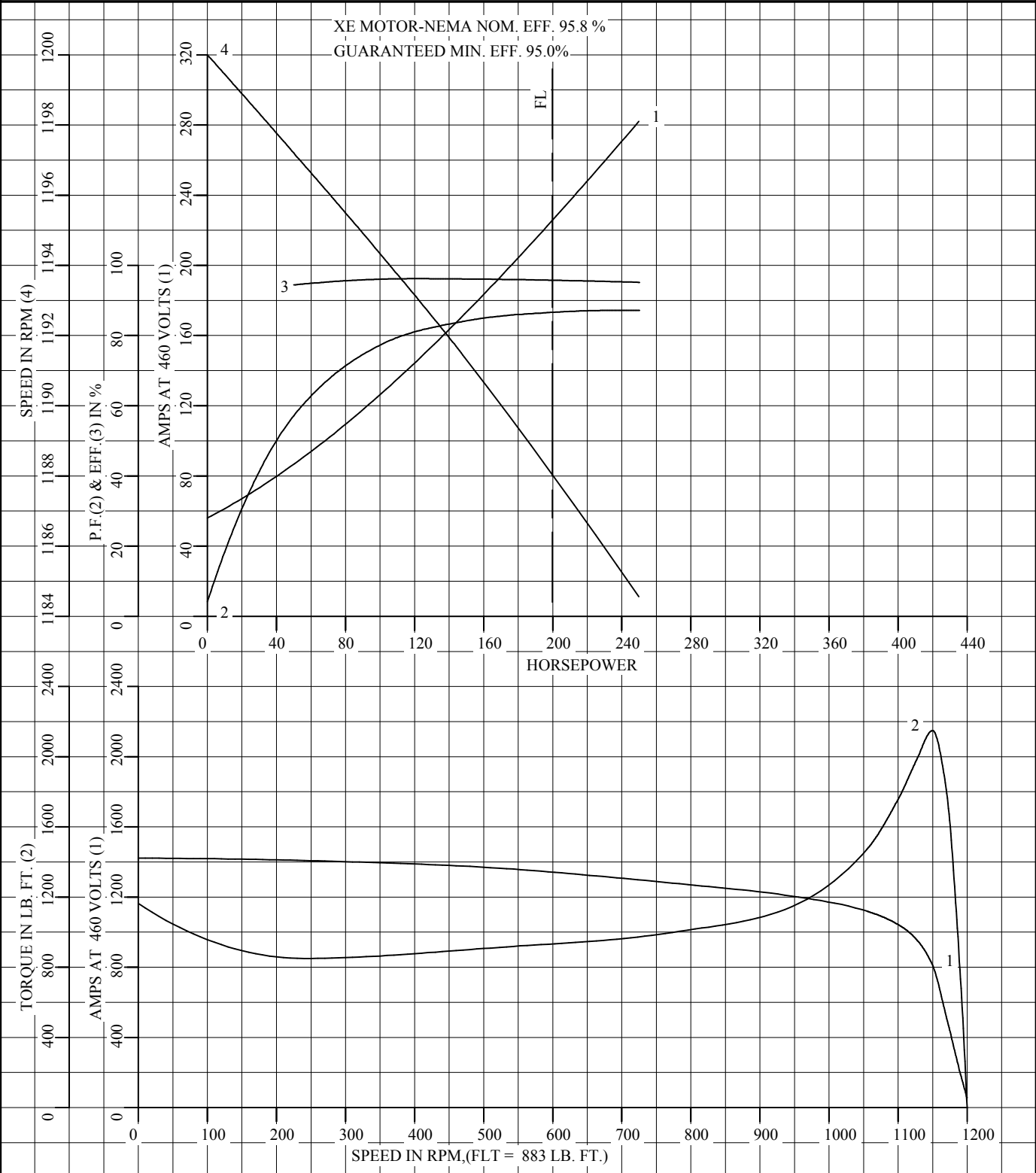
REMARKS: TYPICAL DATA
XE MOTOR-NEMA NOM. EFF. 95.8 %
GUARANTEED MIN. EFF. 95.0%



DR. BY G. R. WEBB
CK. BY W. L. SMITH
APP. BY W. L. SMITH
DATE 10/08/10

**A-C MOTOR
PERFORMANCE DATA** A44WG1497-R001
ISSUE DATE 01/06/21

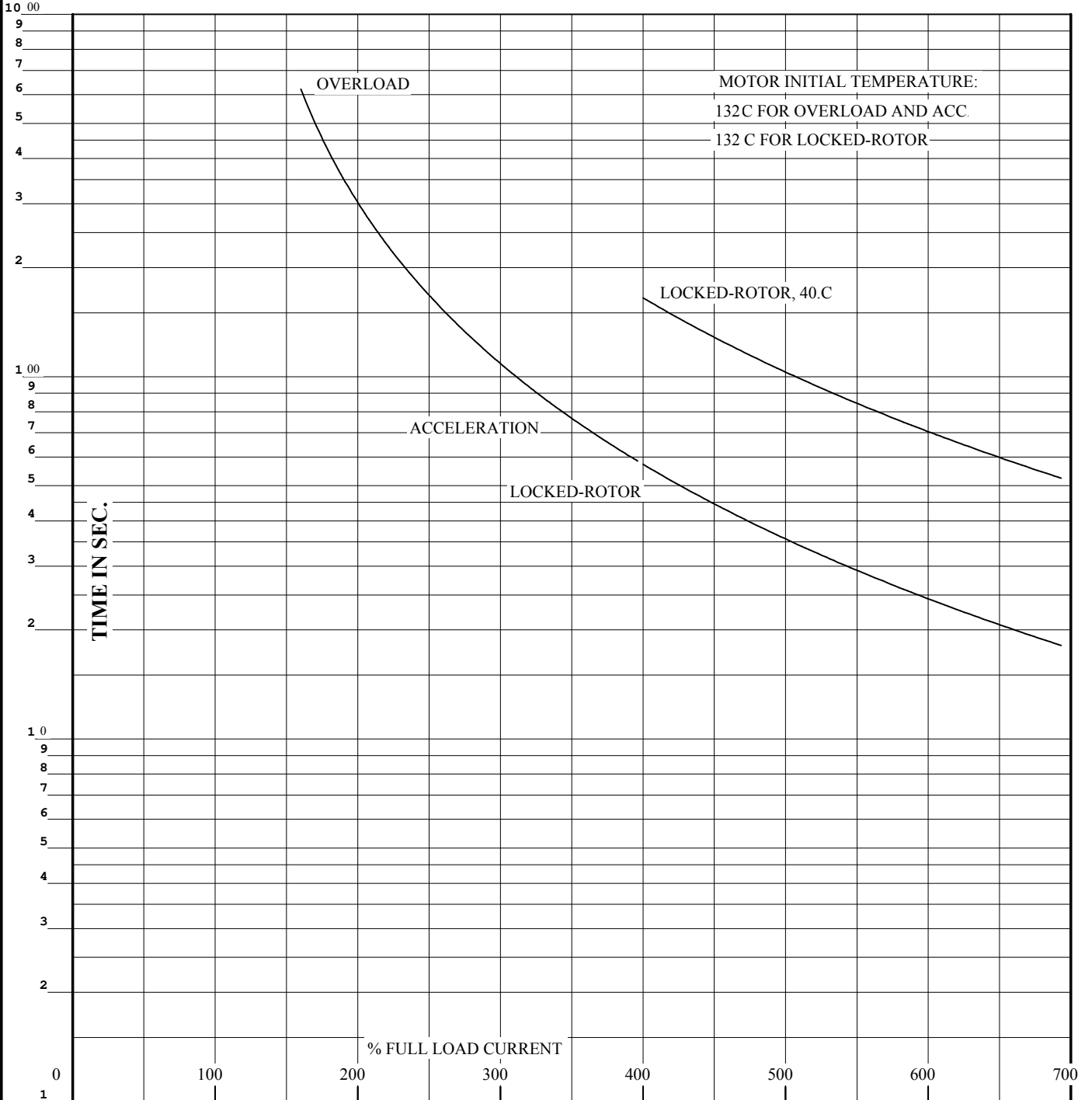
REL S.O.	RPM 1190	S.F. 1.15	ROTOR 418143-98-XE
FRAME 449T	VOLTS 460	NEMA DESIGN B	TEST S.O. TYPICAL DATA
HP 200	AMPS 225	CODE LETTER G	TEST DATE ---
TYPE P	DUTY CONT	ENCLOSURE TEFC	STATOR RES. @ 25 °C .0220
PHASE/HERTZ 3/60	AMB °C/INSUL 40/F	E/S 833245	OHMS (BETWEEN LINES)



DR. BY G. R. WEBB
 CK. BY W. L. SMITH
 APP. BY W. L. SMITH
 DATE 10/08/10

**A-C MOTOR
 PERFORMANCE CURVES**
 A44WG1497-R001
 ISSUE DATE 01/06/21

REL. S.O.	RPM 1190	S.F. 1.15	ROTOR 418143-98-XE
FRAME 449T	VOLTS 460	NEMA DESIGN B	TEST S.O. TYPICAL DATA
HP 200	AMPS 225	CODE LETTER G	TEST DATE ---
TYPE P	DUTY CONT	ENCLOSURE TEFC	STATOR RES. @ 25 °C .0220
PHASE/HERTZ 3/60	AMB °C/INSUL 40/F	E/S 833245	OHMS (BETWEEN LINES)



THERMAL LIMIT CURVE

REMARKS: XE MOTOR-NEMA NOM. EFF. 95.8 %
GUARANTEED MIN. EFF. 95.0%

AMPERES SHOWN FOR 460 VOLT CONNECTION, IF OTHER VOLTAGE CONNECTIONS ARE AVAILABLE, THE AMPERES WILL VARY INVERSELY WITH THE RATED VOLTAGE.



DR. BY G. R. WEBB
CK. BY W. L. SMITH
APP. BY W. L. SMITH
DATE 10/08/10

**A-C MOTOR
PERFORMANCE CURVES** **A44WG1497-R001**
ISSUE DATE 01/06/21 Page 8 of 11

DUTY MASTER ALTERNATING CURRENT MOTORS

SQUIRREL-CAGE INDUCTION

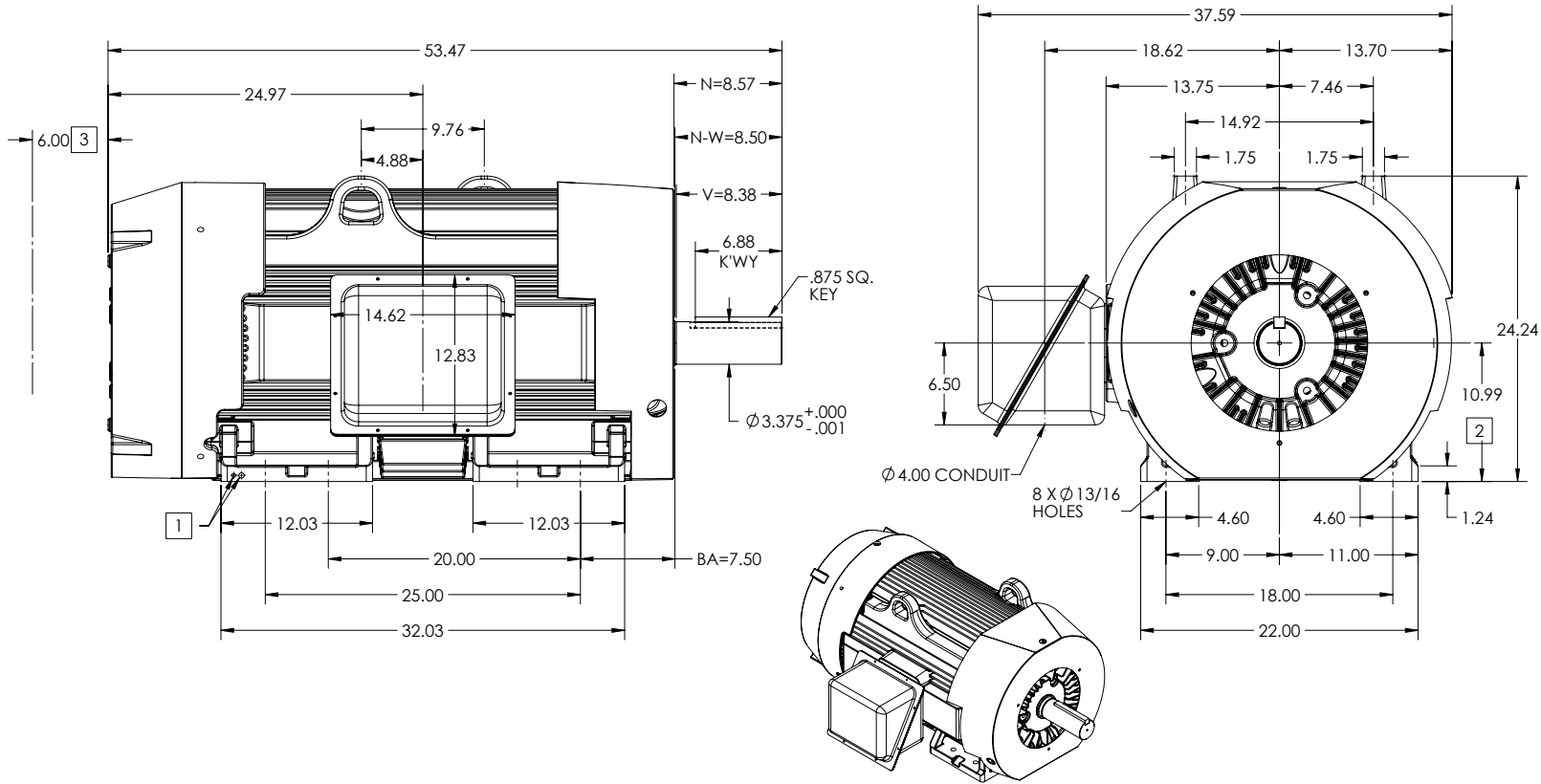
ENCLOSURE: TOTALLY ENCLOSED

FRAME G449T ABOVE NEMA RATINGS

COOLING: FAN COOLED

MOUNTING: FOOT, F-1 SIDE

INCLUDES G447T FRAME MOUNTING HOLES



1. GROUND HOLES: QTY 1 1/2-13 TAP; QTY 1 3/8-16 TAP.
2. VARIES +.00, -.06.
3. OBSTRUCTION MUST NOT ENCROACH ON AIR-INLET.
4. MOTOR WEIGHTS MAY VARY BY 15% DEPENDING ON RATING.

IF MOUNTING CLEARANCE DETAILS ARE REQUIRED, CONSULT FACTORY.
MAXIMUM PERMISSIBLE SHAFT RUNOUT WHEN MEASURED AT END OF
STANDARD SHAFT EXTENSION IS .003" T.I.R. TO 5 INCH DIA.

4 WEIGHT (LBS): 3100

DIMENSIONS ARE IN INCHES; SEE SHEET 2 FOR DIMENSIONS IN MILLIMETERS

REV. A	VERSION: 01	REVISED: 12-46-23 11/21/2025	TDR: 00001267443
MODEL NO. 617427-190		REF:	
BY: USDOSCO2		Material:	

BALDOR

G449T/447T TEFC W/ AIR-DEFLECTOR F1 FT MTG

1 OF 2

061-227-119

617427-190

617427-190

DUTY MASTER ALTERNATING CURRENT MOTORS

SQUIRREL-CAGE INDUCTION

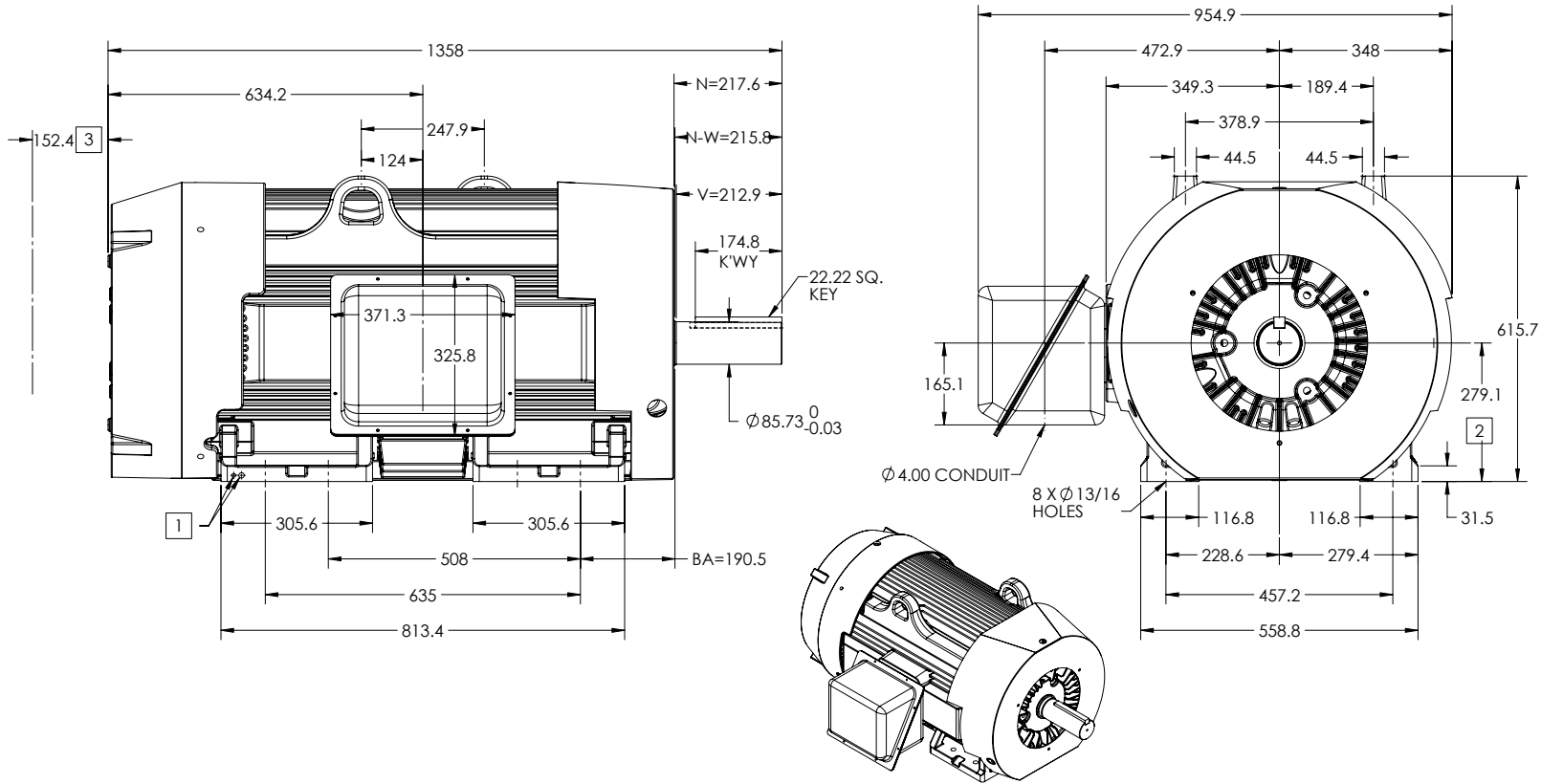
ENCLOSURE: TOTALLY ENCLOSED

FRAME G449T ABOVE NEMA RATINGS

COOLING: FAN COOLED

MOUNTING: FOOT, F-1 SIDE

INCLUDES G447T FRAME MOUNTING HOLES



1. GROUND HOLES: QTY 1 1/2-13 TAP; QTY 1 3/8-16 TAP.
2. VARIES +0, -1.5
3. OBSTRUCTION MUST NOT ENCROACH ON AIR-INLET.
4. MOTOR WEIGHTS MAY VARY BY 15% DEPENDING ON RATING.

4 WEIGHT (KGS): 1406

IF MOUNTING CLEARANCE DETAILS ARE REQUIRED, CONSULT FACTORY.
MAXIMUM PERMISSIBLE SHAFT RUNOUT WHEN MEASURED AT END OF
STANDARD SHAFT EXTENSION IS .08MM T.I.R. TO 127MM DIA.

DIMENSIONS ARE IN MILLIMETERS; SEE SHEET 1 FOR DIMENSIONS IN INCHES

2 OF 2

061-227219

REV. DESC: REMOVE BUILD PER NOTE			
REV: A	VERSION: 01	REVISED: 12-46-23 11/21/2025	TDR: 00001267443
MODEL NO. 617427-190		REF:	
BY: USDOSCO2	Material:	C	

BALDOR

G449T/447T TEFC W/ AIR-DEFLECTOR F1 FT MTG

617427-190

416820-036

A-C MOTOR
CONNECTION DIAGRAM
STANDARD 3 LEAD CONNECTED



(N.P. 1575-BA)

REV. DESC: LOADED TO BUS, C/R 335225

REV. LTR: -

VERSION: 00

TDR: 000000538207

FILE: \MGA\00000\682

REVISED: 11:54:06 04/30/2010

MTL: -

BY: RAGRA

BALDOR

CONN DIAG - STANDARD 3 LEAD

SH 1 of 1

416820-036