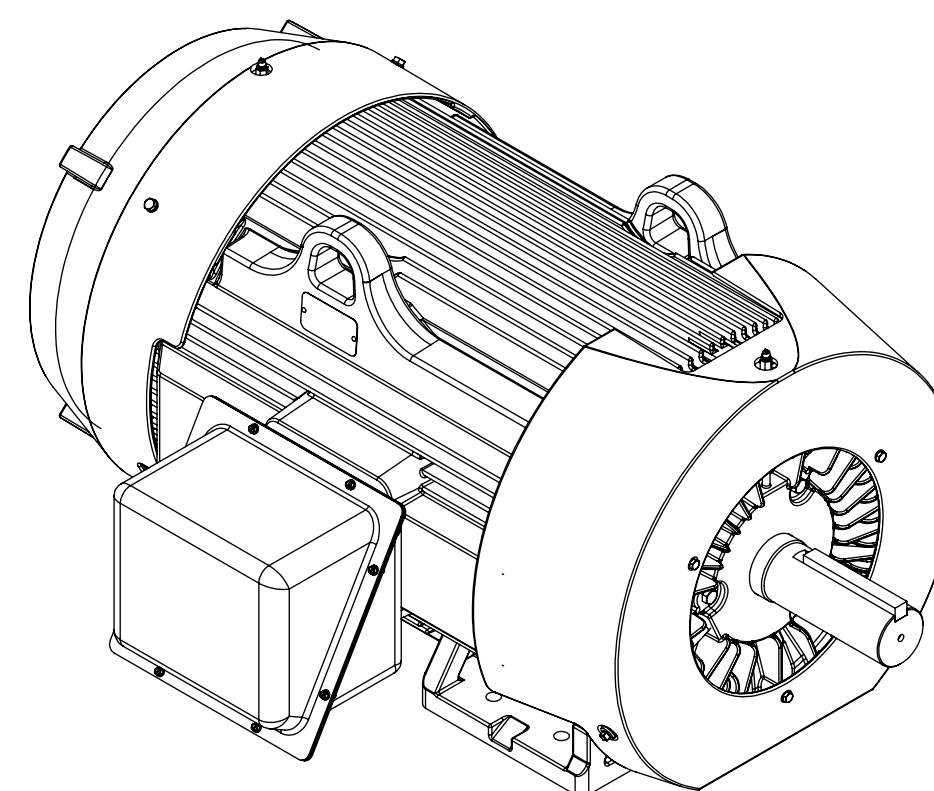
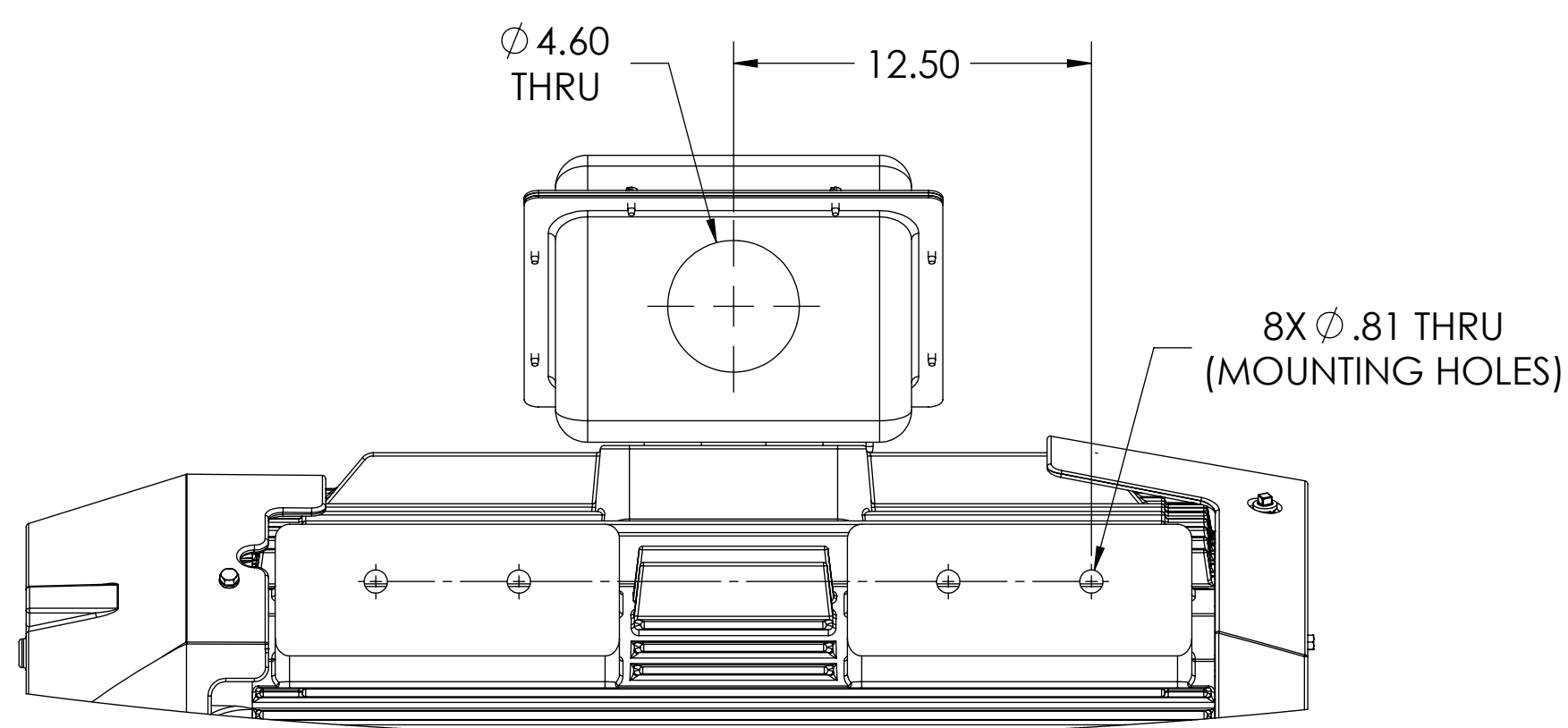
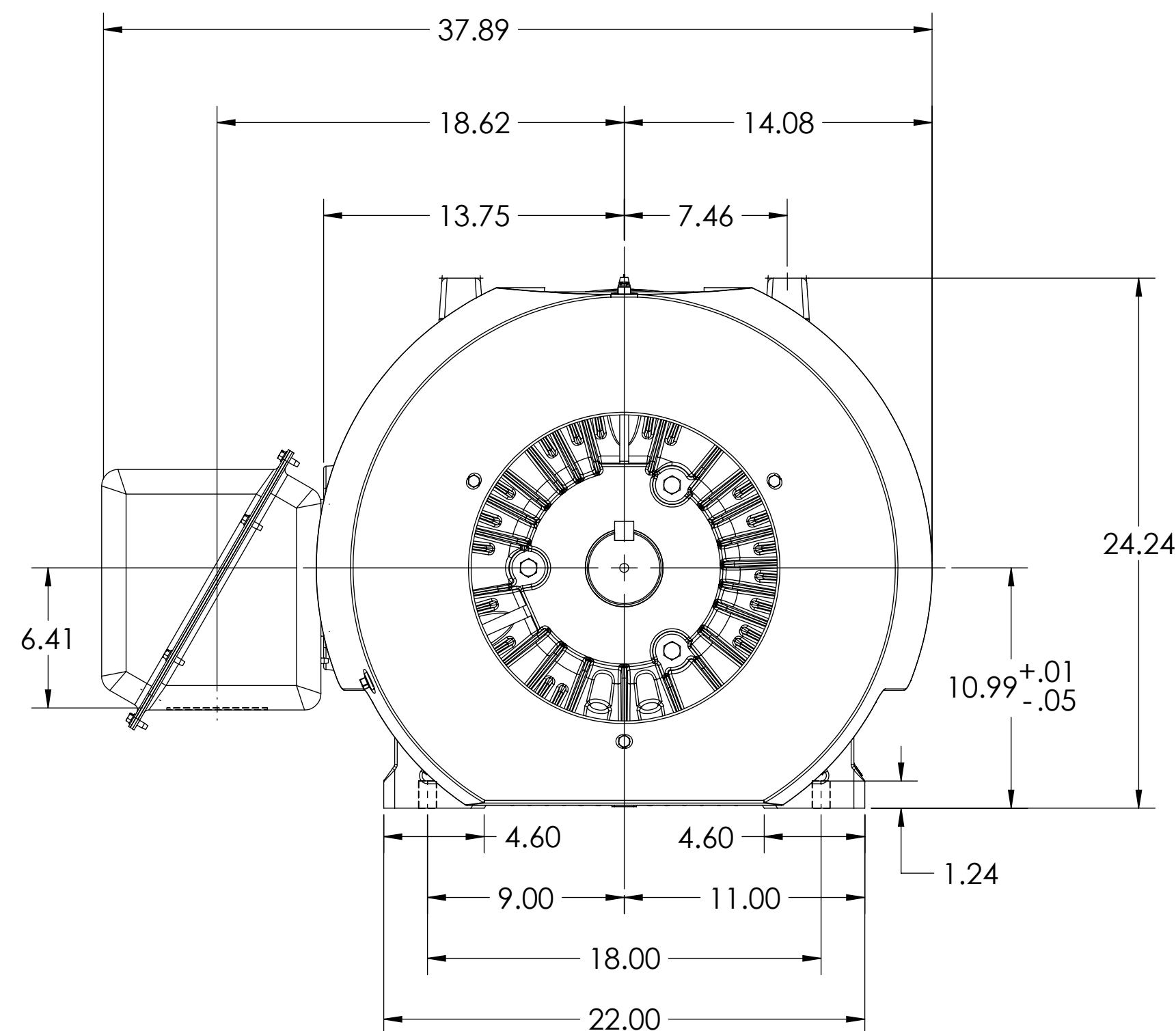


COOLING: FAN COOLED



REV. DESC: UPDATE MODEL TO ADD EXT HARDWARE NO CHG TO PRINT			
REV: B	VERSION: 02	REVISED: 02:38:55 07/08/2022	TDR: 000001193529
MODEL NO. 617427-209			
BY: USBUFRA			

G449/447T TEFC F1 FOOT SIDE/CENTER STEEL CONDUIT BOX

617427-209

CONDUIT BOX LOCATED ON OPPOSITE SIDE WHEN F-2.
IF MOUNTING CLEARANCE DETAILS ARE REQUIRED, CONSULT FACTORY.
MAX PERMISSIBLE SHAFT RUNOUT WHEN MEASURED AT END OF STANDARD SHAFT EXTENSION IS .003" T.I.R.