

ABB BALDOR RELIANCE III

Customer information packet

EM4400T-12

100HP, 1785RPM, 3PH, 60HZ, 405T, A40064M, TEFC

Class - None

Division - Not Applicable

Specifications

Enclosure	TEFC
Frame	405T
Frame Material	Iron
Frequency	60.00 Hz
Haz Area Class and Group	None
Haz Area Division	Not Applicable
Motor Letter Type	Three Phase
Output @ Frequency	100.000 HP @ 60 HZ
Phase	3
Synchronous Speed @ Frequency	1800 RPM @ 60 HZ
Voltage @ Frequency	460.0 V @ 60 HZ 230.0 V @ 60 HZ
Agency Approvals	CURUSEEV CCSAUSEEV
Ambient Temperature	40 °C
Base Indicator	Rigid
Bearing Grease Type	Polyrex EM (-20F +300F)
Current @ Voltage	112.000 A @ 460.0 V 224.000 A @ 230.0 V
Design Code	B
Duty Rating	CONT
Efficiency @ 100% Load	95.4 %
High Voltage Full Load Amps	112.0 a
Insulation Class	F
Inverter Code	Inverter Ready
KVA Code	G
Lifting Lugs	Standard Lifting Lugs
Motor Lead Quantity/Wire Size	12 @ 4 AWG
Motor Standards	NEMA
Motor Type	A40064M
Mounting Arrangement	F1
Number of Poles	4

Part Detail

Revision	L
Type	AC
Mech. spec.	
Base	
Status	PRD/A
Elec. spec.	A40WG0690
Layout	617429-001
Eff. date	09-04-2024
CD Diagram	416820-020
Poles	04
Leads	12#4
Proprietary	False
Created date	07-17-2013

Overall Length	38.19 IN
Power Factor	87
Product Family	Other
Pulley End Bearing Type	Ball
Pulley Face Code	Standard
Service Factor	1.15
Shaft Diameter	2.875 IN
Shaft Ground Indicator	No Shaft Grounding
Shaft Rotation	Reversible
Speed	1785 rpm
Speed Code	Single Speed
Starting Method	Wye Start - Delta Run


Nameplate

NP2349L

SPEC NO.	P40G3925	CAT.NO.	EM4400T-12	FRAME	405T				
HP	100	VOLTS	230/460	PHASE	3	DESIGN	B	TYPE	P
RPM	1785	AMPS	224/112	HZ	60	AMB	40	SF	1.15
DRIVE END BEARING	80BC03J30X	DUTY	CONT	INSUL.CLASS	F				
OPP D.E. BEARING	80BC03J30X	ENCL	TEFC	CODE	G				
SER.NO.		POWER FACTOR	87	NEMA-NOM-EFFICIENCY	95.4				
		MAX CORR KVAR	18	GUARANTEED EFFICIENCY	94.5				
		NEMA NOM/CSA QUOTED EFF							
		MOTOR WEIGHT							

Accessories

Part number	Description	Multiplier
K40G2	C-FACE KIT FR400T 4/6/8POLE ONLY	A8
089412054B	D-FLANGE BRKT 400 089416055WCB	P1

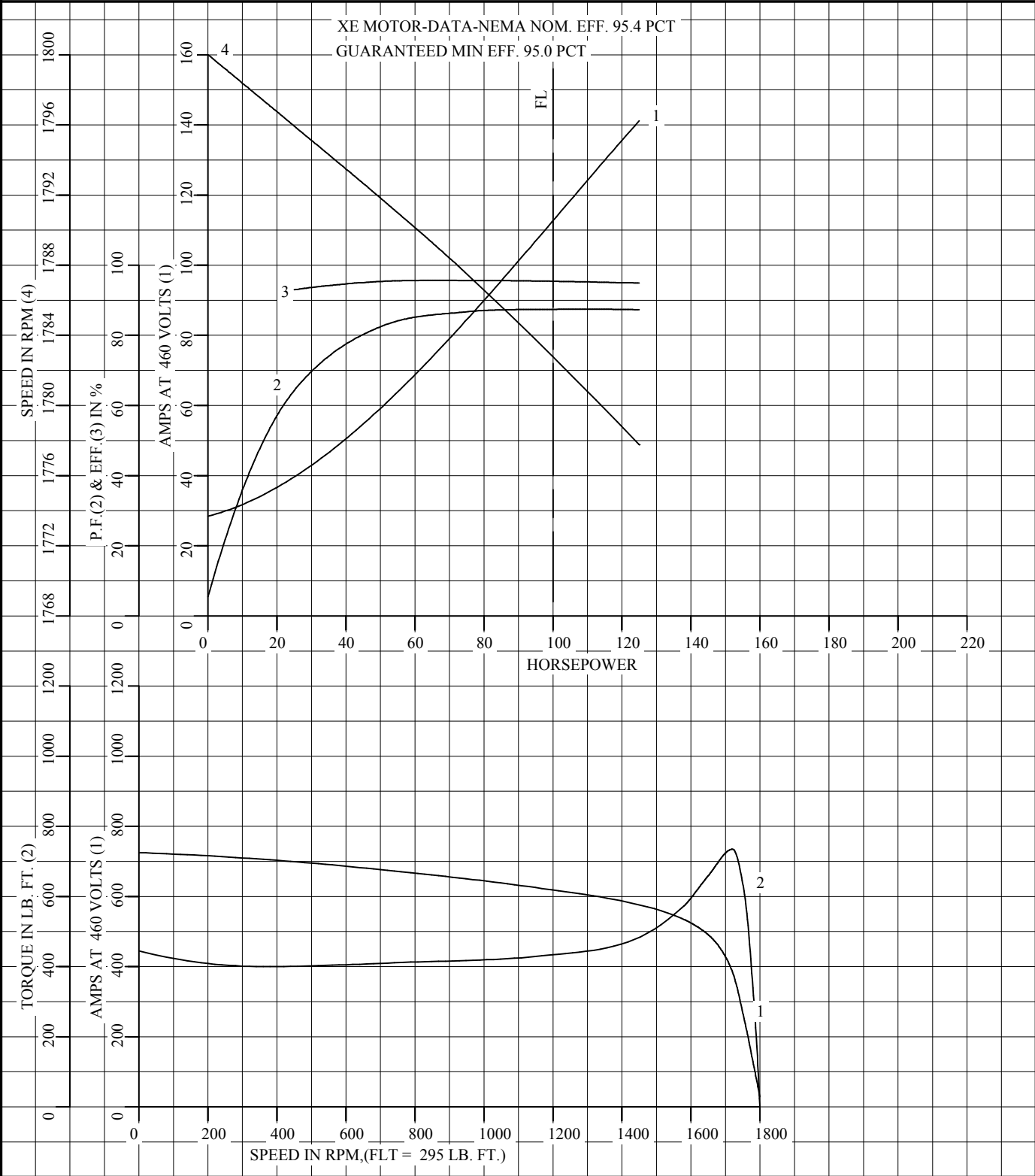
REL. S.O.	FRAME	HP	TYPE	PHASE/ HERTZ	RPM	VOLTS
	405T	100	P	3/60	1785	230/460
AMPS	DUTY	AMB °C/ INSUL.	S.F.	NEMA DESIGN	CODE LETTER	ENCL.
224/112	CONT	40/F	1.15	B	G	FCXE
E/S	ROTOR	TEST S.O.	TEST DATE	STATOR RES. @25 °C OHMS (BETWEEN LINES)		
496453	418142-33-RE	---	---	.0123/.0492		
PERFORMANCE						
LOAD	HP	AMPERES	RPM	% POWER FACTOR	% EFFICIENCY	
NO LOAD	0	28.6	1800	5.49	0	
1/4	25.0	39.2	1796	64.3	93.0	
2/4	50.0	59.5	1792	82.5	95.4	
3/4	75.0	84.6	1788	86.7	95.7	
4/4	100	112	1783	87.4	95.4	
5/4	125	141	1778	87.3	94.9	
SPEED TORQUE						
		RPM	TORQUE % FULL LOAD	TORQUE LB.-FT.	AMPERES	
LOCKED ROTOR		0	151	445	725	
PULL UP		360	136	400	706	
BREAKDOWN		1721	250	735	382	
FULL LOAD		1783	100	295	112	
<p>AMPERES SHOWN FOR 460. VOLT CONNECTION. IF OTHER VOLTAGE CONNECTIONS ARE AVAILABLE, THE AMPERES WILL VARY INVERSELY WITH THE RATED VOLTAGE</p> <p>REMARKS: TYPICAL DATA XE MOTOR-DATA-NEMA NOM. EFF. 95.4 PCT GUARANTEED MIN EFF. 95.0 PCT</p>						
		DR. BY <u>R.L. STEPHENS</u> CK. BY <u>K.W. KANOUFF</u> APP. BY <u>K.W. KANOUFF</u> DATE <u>06/07/96</u>		A-C MOTOR PERFORMANCE A40WG0690-R001 DATA		
				ISSUE DATE 06/07/96		

FRAME 405T
HP 100
TYPE P
PHASE/HERTZ 3/60

VOLTS 230/460
AMPS 224/112
DUTY CONT
AMB °C/INSUL 40/F

NEMA DESIGN B
CODE LETTER G
ENCLOSURE FCXE
E/S 496453

TEST S.O. TYPICAL DATA
TEST DATE ---
STATOR RES. @ 25 °C .0123/.0492
OHMS (BETWEEN LINES)



DR. BY R.L.STEPHENS
CK. BY K.W.KANOUFF
APP. BY K.W.KANOUFF
DATE 06/07/96

**A-C MOTOR
PERFORMANCE CURVES** A40WG0690-R001
ISSUE DATE 06/07/96

ENCLOSURE: TOTALLY ENCLOSED

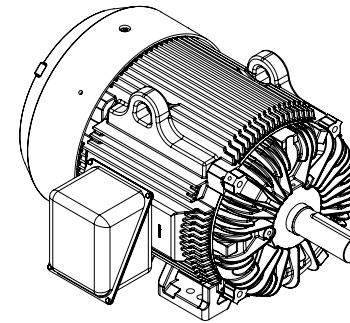
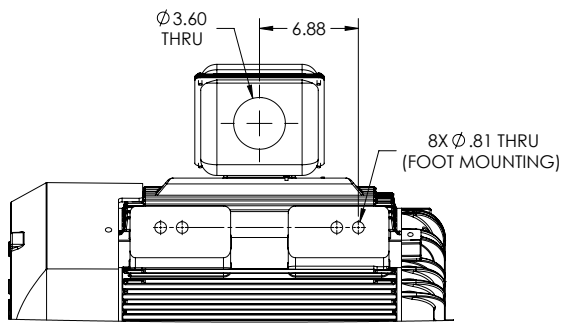
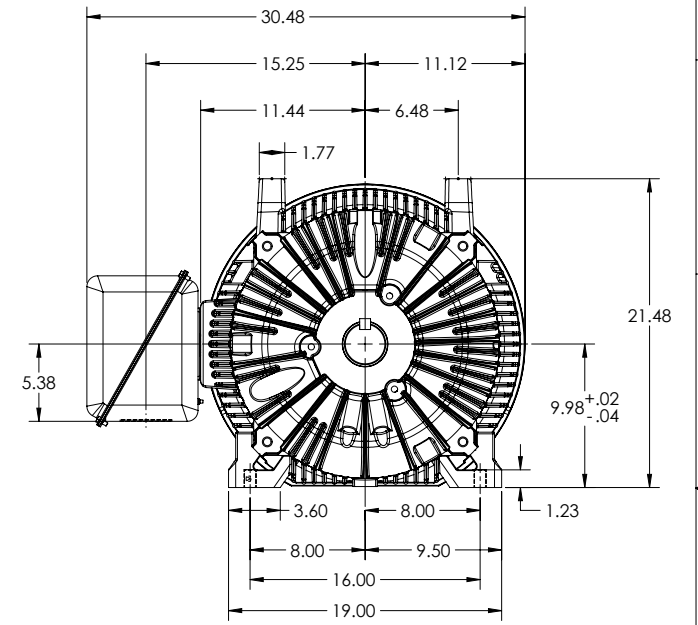
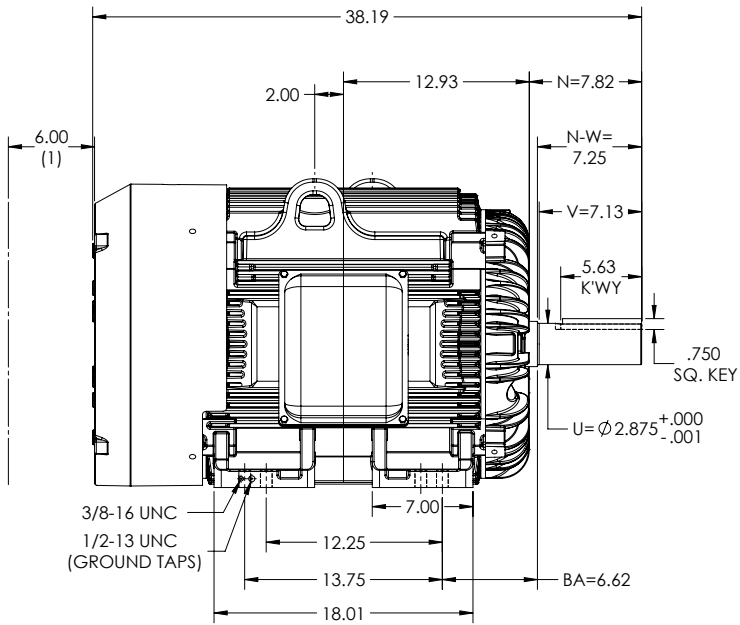
MOUNTING: FOOT, F1

DUTY MASTER ALTERNATING CURRENT MOTORS
SQUIRREL-CAGE INDUCTION

G405T/G404T FRAME MOUNTING HOLES

COOLING: FAN COOLED

STEEL CONDUIT BOX



(1) OBSTRUCTION MUST NOT ENCROACH ON AIR INLET.

IF MOUNTING CLEARANCE DETAILS ARE REQUIRED, CONSULT FACTORY.

MAX PERMISSIBLE SHAFT RUNOUT WHEN MEASURED AT END OF STANDARD SHAFT EXTENSION IS .003" T.I.R.

DIMENSIONS ARE IN INCHES.
MOTOR WEIGHT: 1350 LBS. MAY VARY BY 15% DEPENDING ON RATING.
CUSTOMER IS RESPONSIBLE FOR DETERMINING THAT MOTOR PERFORMANCE IS SUITABLE IN THE APPLICATION.

REV: D	VERSION: 04	REVISED: 11-04-59 03:09:2022	TDR: 000001187401
MODEL NO. 617429-001	BY: RAGGDM	Material:	REF:

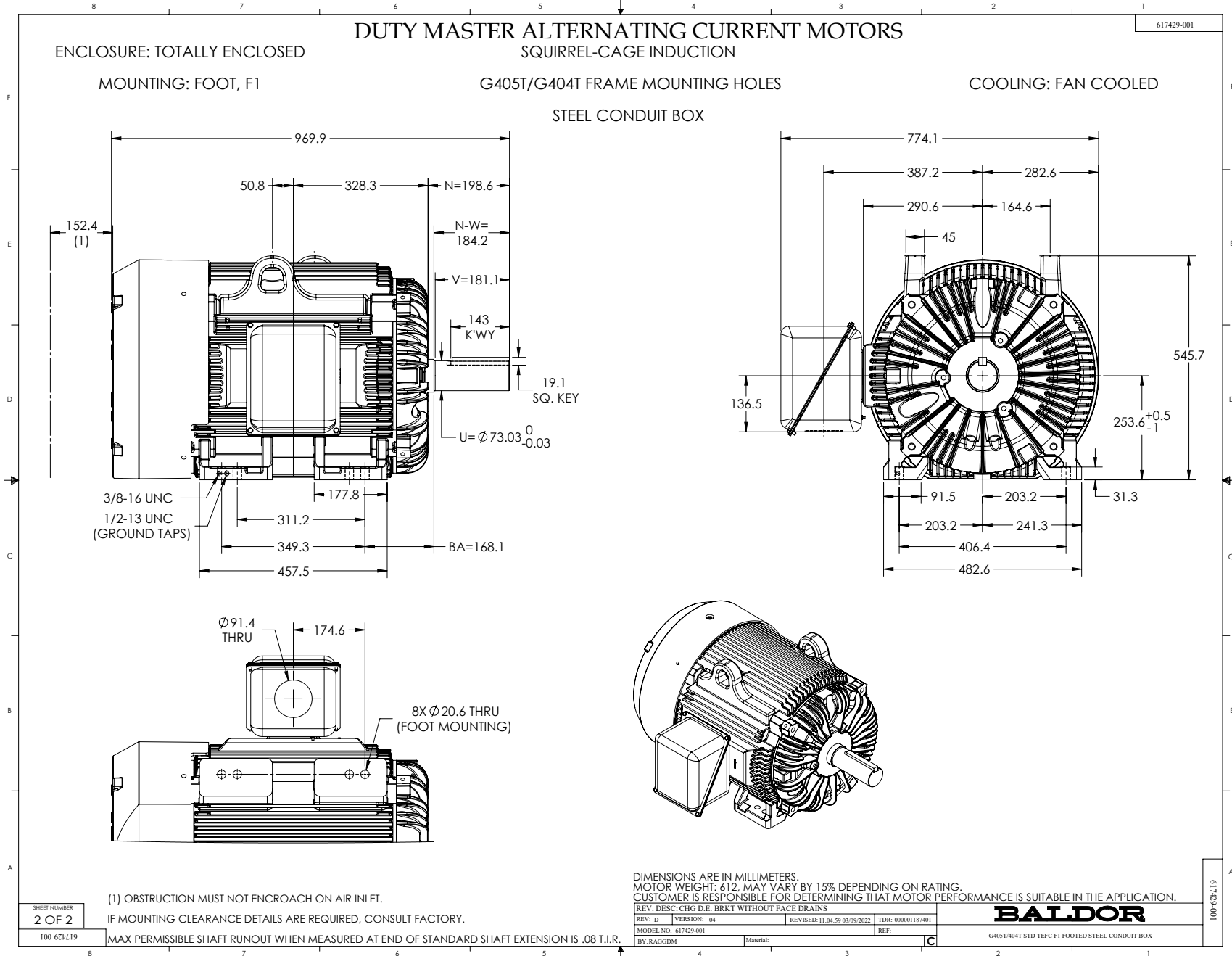
BALDOR

G405T-404T STD TEFC F1 FOOTED STEEL CONDUIT BOX

SHEET NUMBER
1 OF 2

100-627219

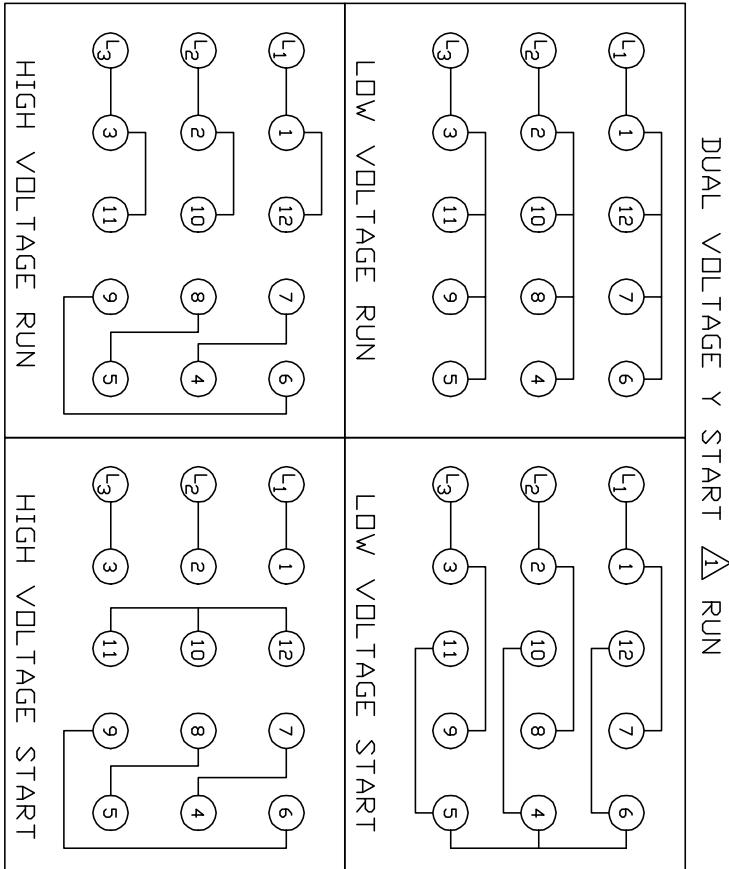
617429-001



416820-020

**A-C MOTOR
CONNECTION DIAGRAM**

416820-020



<410961-39 / 1575-AC>

CUSTOMER _____

CUSTOMER
ORDER NO. _____

S. D. NO. _____

REV. DESC: LOADED TO BUS		
REV. LTR: A	VERSION: 01	TDR: 00000553773
FILE: \RAG\00011\270	REVISED: 01:15:19 08/12/2010	
MTL: -	BY: RAGMTC	

BALDOR

A-C MOTOR CONNECTION DIAGRAM

SH 1 of 1