



---

# Customer information packet

## EM4314T-58

60HP, 1485RPM, 3PH, 50HZ, 364T, A36070M, TEFC

Class - None

Division - Not Applicable

## Specifications

Enclosure	TEFC
Frame	364T
Frame Material	Iron
Frequency	50.00 Hz
Haz Area Class and Group	None
Haz Area Division	Not Applicable
Motor Letter Type	Three Phase
Output @ Frequency	60.000 HP @ 50 HZ
Phase	3
Synchronous Speed @ Frequency	1500 RPM @ 50 HZ
Voltage @ Frequency	400.0 V @ 50 HZ
Agency Approvals	WEEE CCSA US CE
Ambient Temperature	40 °C
Auxillary Box	No Auxillary Box
Base Indicator	Rigid
Bearing Grease Type	Polyrex EM (-20F +300F)
Current @ Voltage	79.100 A @ 400.0 V
Design Code	B
Drip Cover	No Drip Cover
Duty Rating	CONT
Efficiency @ 100% Load	94.2 %
Feedback Device	NO FEEDBACK
Heater Indicator	No Heater
High Voltage Full Load Amps	79.1 a
Insulation Class	F
Inverter Code	Inverter Ready
IP Rating	NONE
KVA Code	G
Lifting Lugs	Standard Lifting Lugs
Motor Lead Quantity/Wire Size	6 @ 6 AWG

## Part detail

Revision	K
Type	AC
Mech. spec.	
Base	
Status	PRD/A
Elec. spec.	A36WG0820
Layout	617431-412
Eff. date	08-17-2023
CD Diagram	416820-008
Poles	04
Leads	6#6
Proprietary	False
Created date	06-10-2019

<b>Motor Standards</b>	NEMA
<b>Motor Type</b>	A36070M
<b>Mounting Arrangement</b>	F1
<b>Number of Poles</b>	4
<b>Overall Length</b>	33.48 IN
<b>Power Factor</b>	86
<b>Product Family</b>	General Industrial
<b>Pulley End Bearing Type</b>	Ball
<b>Pulley Face Code</b>	Standard
<b>Service Factor</b>	1.15
<b>Shaft Diameter</b>	2.375 IN
<b>Shaft Ground Indicator</b>	No Shaft Grounding
<b>Shaft Rotation</b>	Reversible
<b>Shaft Slinger Indicator</b>	No Slinger
<b>Speed</b>	1485 rpm
<b>Speed Code</b>	Single Speed
<b>Starting Method</b>	Wye Start - Delta Run
<b>Thermal Device - Bearing</b>	None
<b>Thermal Device - Winding</b>	None

**Nameplate**

---

NP2496L	
MOBIL POLYREX EM	

---

---

**NP2838L**

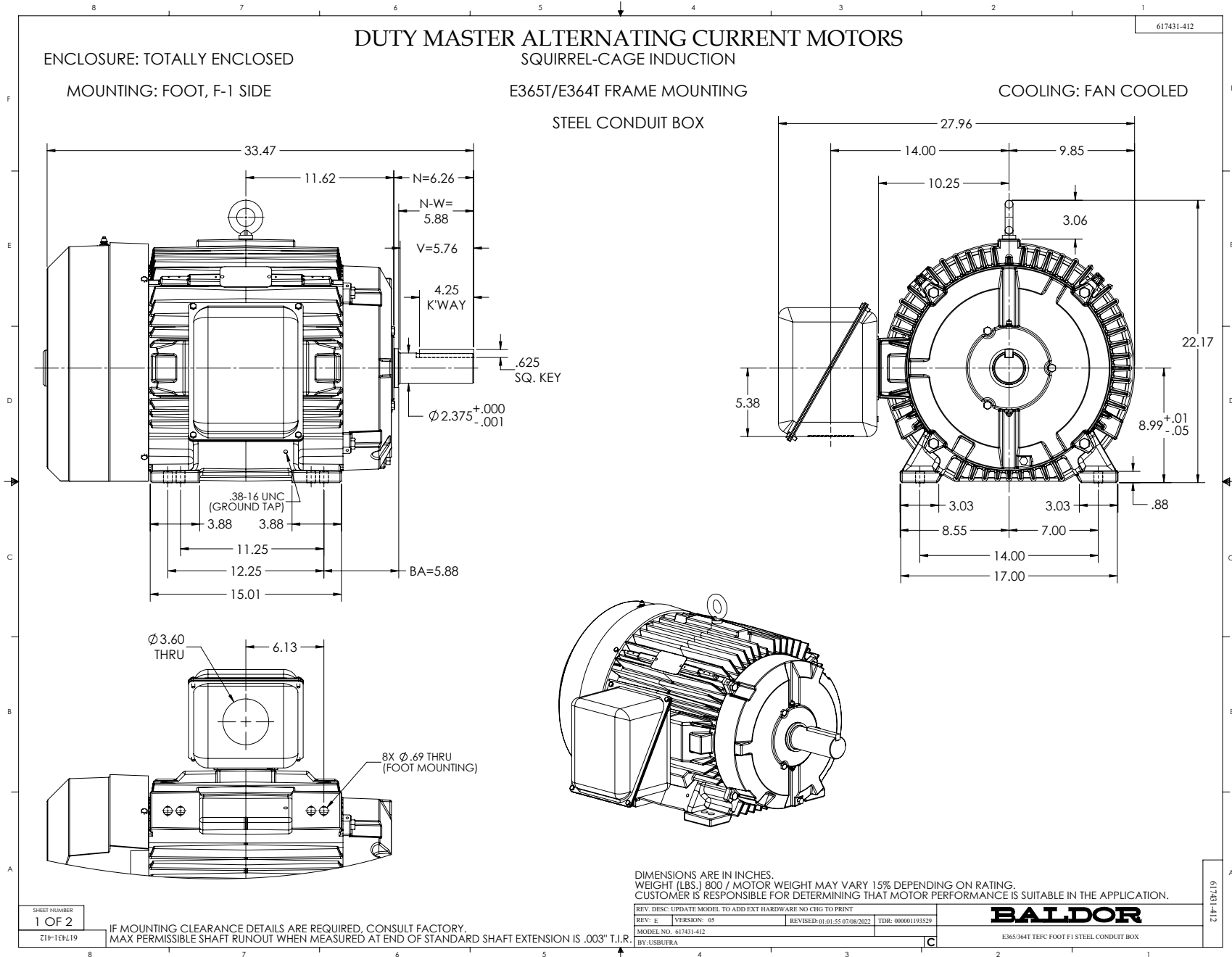
---

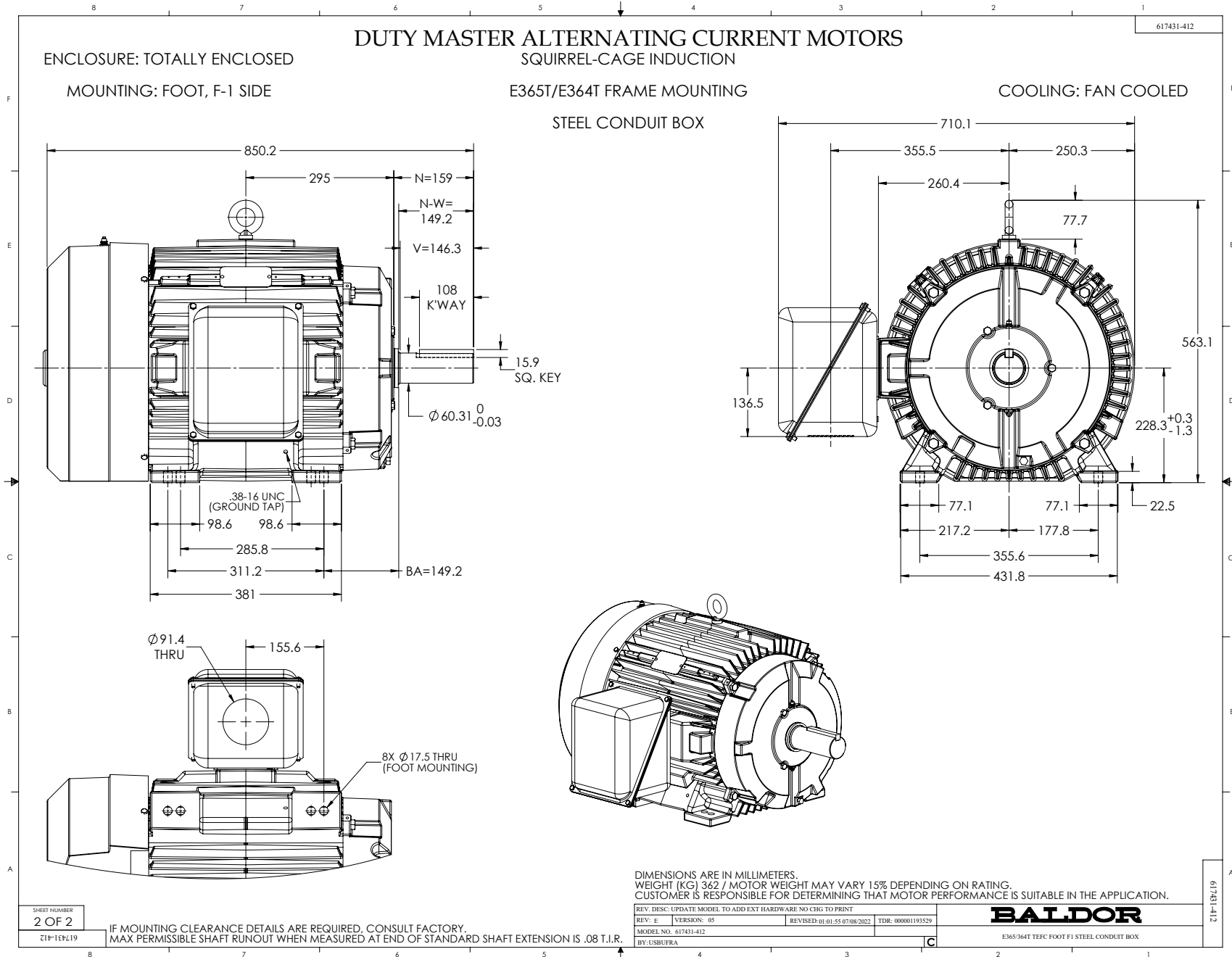
<b>SPEC NO.</b>	A36-0002-0820	<b>IP</b>	44	<b>TEMP</b>	64
	IE3 - 94.2 (100%) - 95.2(75%)			- 95.1(50%)	

---

**NP3145L**

<b>SPEC NO.</b>	A36-0002-0820	<b>CAT.NO.</b>	EM4314T-58	<b>FRAME</b>	364T
<b>HP</b>	60	<b>VOLTS</b>	400	<b>PHASE</b>	3
<b>RPM</b>	1485	<b>AMPS</b>	79.1	<b>DESIGN</b>	B
<b>DRIVE END BEARING</b>	65BC03J30X	<b>DUTY</b>	CONT	<b>TYPE</b>	P
<b>OPP D.E. BEARING</b>	65BC03J30X	<b>INSUL.CLASS</b>	F	<b>AMB</b>	40
<b>SER.NO.</b>		<b>ENCL</b>	TEFC	<b>SF</b>	1.15
		<b>CODE</b>	G	<b>POWER FACTOR</b>	86
		<b>INSUL.CLASS</b>	F	<b>NEMA-NOM-EFFICIENCY</b>	94.2
	60HP/45KW	<b>MAX CORR KVAR</b>	12.4	<b>GUARANTEED EFFICIENCY</b>	93
	412 KG.	<b>NEMA NOM/CSA QUOTED EFF</b>			
		<b>MOTOR WEIGHT</b>			





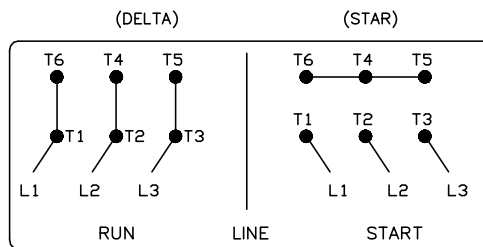
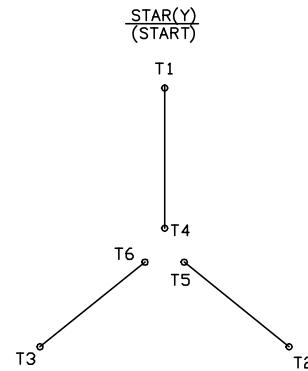
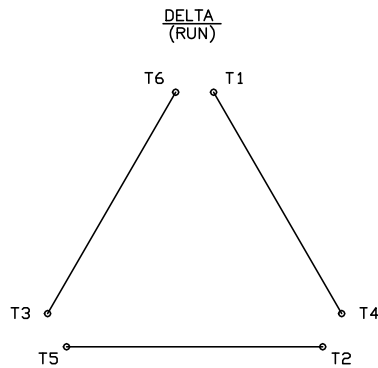


416820-008

# A-C MOTOR CONNECTION DIAGRAM

STANDARD 6 LEAD

Y START - DELTA RUN



< N. P. 1767-DC >

REV. DESC: ADDED T4 TO Y CONNECT DIAGRAM		
REV. LTR: D	VERSION: 04	TDR: 00000847713
FILE: \RAG\00001\808	REVISED: 10: 41: 26 04/08/2014	BY: RAGJSS1
MTL: -	© □	

**BALDOR**

CONNECT DIAGRAM STD 6 LEAD Y START DELTA RUN

SH 1 of 1

416820-008