

**BALDOR • RELIANCE**

---

# Customer information packet

## EM4314T-12

60HP, 1780RPM, 3PH, 60HZ, 364T, A3658M, TEFC, F

Class - None

Division - Not Applicable

## Specifications

Enclosure	TEFC
Frame	364T
Frame Material	Iron
Frequency	60.00 Hz
Haz Area Class and Group	None
Haz Area Division	Not Applicable
Motor Letter Type	Three Phase
Output @ Frequency	60.000 HP @ 60 HZ
Phase	3
Synchronous Speed @ Frequency	1800 RPM @ 60 HZ
Voltage @ Frequency	230.0 V @ 60 HZ 460.0 V @ 60 HZ
Agency Approvals	CCSAUSEEV NEMA PREMIUM NEMA_PREMIUM UR
Ambient Temperature	40 °C
Auxillary Box	No Auxillary Box
Base Indicator	Rigid
Bearing Grease Type	Polyrex EM (-20F +300F)
Current @ Voltage	70.000 A @ 460.0 V 152.000 A @ 208.0 V 140.000 A @ 230.0 V
Design Code	B
Drip Cover	No Drip Cover
Duty Rating	CONT
Efficiency @ 100% Load	95.0 %
Feedback Device	NO FEEDBACK
Heater Indicator	No Heater
High Voltage Full Load Amps	70.0 a
Insulation Class	F
Inverter Code	Inverter Ready

## Part detail

Revision	U
Type	AC
Mech. spec.	
Base	
Status	PRD/A
Elec. spec.	A36WG4087
Layout	617428-012
Eff. date	07-08-2024
CD Diagram	416820-020
Poles	04
Leads	12#6
Proprietary	False
Created date	12-20-2010

<b>KVA Code</b>	G
<b>Lifting Lugs</b>	Standard Lifting Lugs
<b>Max Speed</b>	2700 rpm
<b>Motor Lead Quantity/Wire Size</b>	12 @ 6 AWG
<b>Motor Standards</b>	NEMA
<b>Motor Type</b>	A3658M
<b>Mounting Arrangement</b>	F1
<b>Number of Poles</b>	4
<b>Overall Length</b>	33.48 IN
<b>Power Factor</b>	84
<b>Product Family</b>	Other
<b>Pulley End Bearing Type</b>	Ball
<b>Pulley Face Code</b>	Standard
<b>Service Factor</b>	1.15
<b>Shaft Diameter</b>	2.375 IN
<b>Shaft Ground Indicator</b>	No Shaft Grounding
<b>Shaft Rotation</b>	Reversible
<b>Shaft Slinger Indicator</b>	No Slinger
<b>Speed</b>	1780 rpm
<b>Speed Code</b>	Single Speed
<b>Starting Method</b>	Wye Start - Delta Run
<b>Thermal Device - Bearing</b>	None
<b>Thermal Device - Winding</b>	None

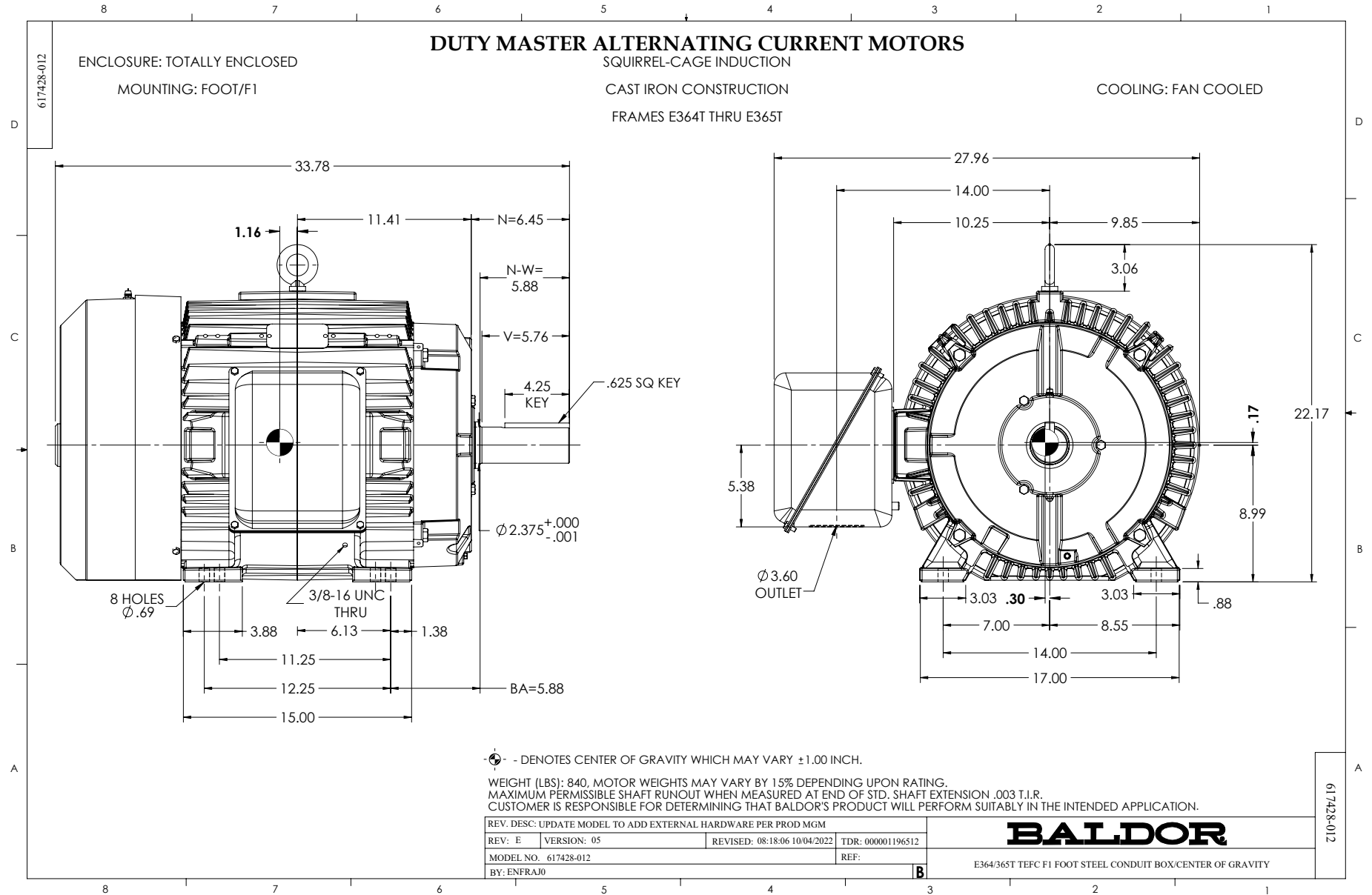
**Nameplate**

**NP3979LUA**

<b>CAT #</b>	EM4314T-12		<b>SER</b>			<b>CC</b>	010A						
<b>SPEC</b>	P36G3432		<b>RATING</b>	40C AMB-CONT									
<b>HZ</b>	<b>VOLTS</b>		<b>AMPS</b>		<b>RPM</b>	<b>HP</b>	<b>CODE</b>	<b>-</b>	<b>SF</b>	<b>DES</b>	<b>PF</b>	<b>NEMA NOM. EFF</b>	
60	230/460		140/70		1780	60	G		1.15	B	84 %	95 %	
	-										%		%
<b>PH</b>	3	<b>CL</b>	F	<b>MAX CORR KVAR</b>		15.0							
<b>BRG</b>	<b>DE</b>	6313	<b>ODE</b>	6313	<b>ENCL</b>	TEFC	<b>FR</b>	364T			IP54		
<b>GREASE</b>	POLYREX EM						<b>MTR WT</b>	850			<b>LBS</b>		
<b>USABLE AT</b>	50HZ 60HP 190/380V 168/84A							SF1.0					
<b>INVERTER DUTY</b>	<b>CT</b>	15-60	<b>HZ</b>	4:1	<b>VT</b>	3-60	<b>HZ</b>	20:1	<b>CHP</b>	60-90	<b>HZ</b>	1.5:1	<b>1.0 SF VPWM</b>
<b>MAX RPM</b>	2700												

**Accessories**

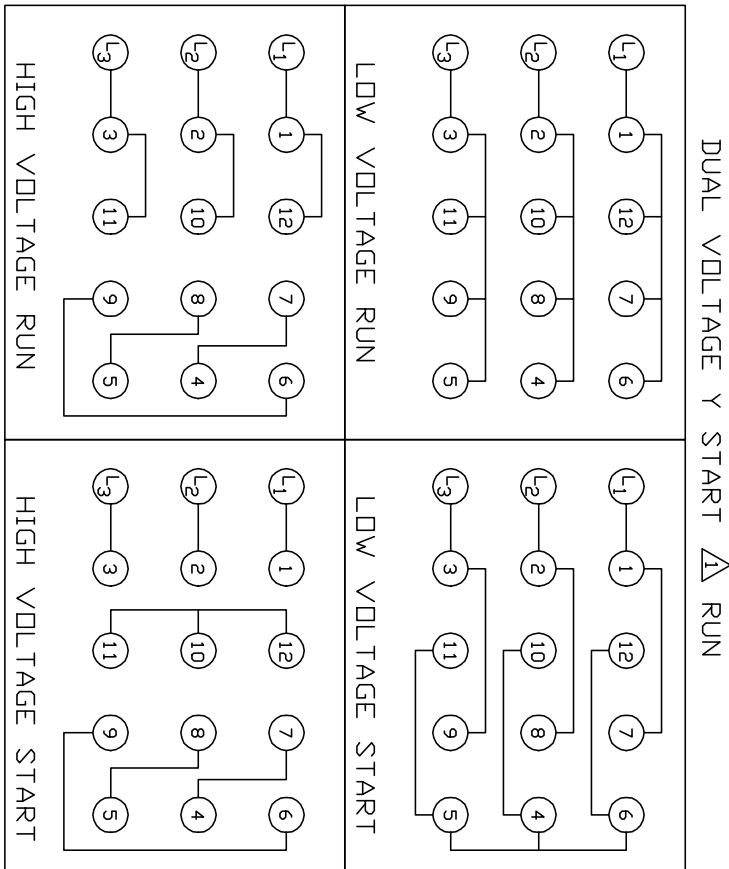
<b>Part number</b>	<b>Description</b>	<b>Multiplier</b>
K36G2	C-FACE KIT	A8
085922068B	BRKT,E360,D-FLG,313,FINISHED-TURNED	P1



416820-020

A-C MOTOR  
CONNECTION DIAGRAM

416820-020



<410961-39 / 1575-AC>

CUSTOMER \_\_\_\_\_

CUSTOMER  
ORDER NO. \_\_\_\_\_

S. O. NO. \_\_\_\_\_

REV. DESC: LOADED TO BUS

REV. LTR: A

VERSION: 01

TDR: 00000053773

FILE: \RAG\00011\270

REVISED: 01:15:19 08/12/2010

MTL: -

BY: RAGMTC

**BALDOR**

A-C MOTOR CONNECTION DIAGRAM

SH 1 of 1