

ABB BALDOR RELIANCE III

Customer information packet

EM4313T

75HP, 3555RPM, 3PH, 60HZ, 365TS, A36068M, TEFC

Class - None

Division - Not Applicable

Specifications

Enclosure	TEFC
Frame	365TS
Frame Material	Iron
Frequency	60.00 Hz
Haz Area Class and Group	None
Haz Area Division	Not Applicable
Motor Letter Type	Three Phase
Output @ Frequency	75.000 HP @ 60 HZ
Phase	3
Synchronous Speed @ Frequency	3600 RPM @ 60 HZ
Voltage @ Frequency	230.0 V @ 60 HZ 460.0 V @ 60 HZ
Agency Approvals	NEMA PREMIUM (OLD LOGO) NEMA PREMIUM CURUSEEV CCSAUSEEV
Ambient Temperature	40 °C
Auxiliary Box	NO AUXILLARY BOX
Base Indicator	Rigid
Bearing Grease Type	Polyrex EM (-20F +300F)
Current @ Voltage	161.000 A @ 230.0 V 80.700 A @ 460.0 V
Design Code	B
Drip Cover	No Drip Cover
Duty Rating	CONT
Efficiency @ 100% Load	93.6 %
Feedback Device	NO FEEDBACK
Heater Indicator	No Heater
High Voltage Full Load Amps	80.7 a
Insulation Class	F
Inverter Code	Inverter Ready
IP Rating	NONE

Part Detail

Revision	Z
Type	AC
Mech. spec.	
Base	
Status	PRD/A
Elec. spec.	A36WG0107
Layout	617428-013
Eff. date	10-28-2024
CD Diagram	416820-002
Poles	02
Leads	3#2,6#4
Proprietary	False
Created date	10-19-2010

KVA Code	F
Lifting Lugs	Standard Lifting Lugs
Max Speed	4500 rpm
Motor Lead Quantity/Wire Size	3 @ 2 AWG
Motor Standards	NEMA
Motor Type	A36068M
Mounting Arrangement	F1
Number of Poles	2
Overall Length	31.36 IN
Power Factor	92
Pulley End Bearing Type	Ball
Pulley Face Code	Standard
Service Factor	1.15
Shaft Diameter	1.875 IN
Shaft Ground Indicator	No Shaft Grounding
Shaft Rotation	Reversible
Shaft Slinger Indicator	No Slinger
Speed	3555 rpm
Speed Code	Single Speed
Starting Method	Direct on line
Thermal Device - Bearing	None
Thermal Device - Winding	None

Nameplate

NP3979LUA

CAT #	EM4313T		SER			CC	010A						
SPEC	P36G3406		RATING	40C AMB-CONT									
HZ	VOLTS		AMPS	RPM	HP	CODE	- SF	DES	PF	NEMA NOM. EFF			
60	230/460		161/80.7	3555	75	F	1.15	B	92 %	93.6 %			
	-								%		%		
PH	3	CL	F	MAX CORR KVAR	5.0								
BRG	DE	6313	ODE	6313	ENCL	TEFC	FR	365TS		54			
GREASE	POLYREX EM					MTR WT	889	LBS					
USABLE AT	50HZ 60HP 190/380V 156/78A					SF1.0							
INVERTER DUTY	CT	15-60	HZ	4:1	VT	3-60	HZ	20:1	CHP	60-75	HZ	1.25:1	1.0 SF VPWM
MAX RPM	4500												

CUSTOMER INFORMATION PACKET		EM4313T - 75HP, 3555RPM, 3PH, 60HZ, 365TS, A36068M, TEFC				
FRAME	HP	TYPE	PHASE/ HERTZ	RPM	VOLTS	
365TS	75	P	3/60	3555	230/460	

AMPS	DUTY	AMB °C/ INSUL	S.F.	NEMA DESIGN	CODE LETTER	ENCLOSURE
161/80.7	CONT	40/F	1.15	B	F	TEFC

E/S	ROTOR	TEST S.O.	TEST DATE	STATOR RES. @25 °C OHMS (BETWEEN LINES)		
892019	418141005TE	---	---	.0186/.0744		

PERFORMANCE


LOAD	HP	AMPERES	RPM	% POWER FACTOR	% EFFICIENCY
NO LOAD	0	15.5	3600	8.92	0
1/4	18.8	24.5	3589	77.9	91.9
2/4	37.5	40.9	3579	90.9	94.5
3/4	56.2	60.2	3567	92.2	94.8
4/4	75.0	81.1	3555	91.6	94.5
5/4	93.8	103	3542	90.9	93.9

SPEED TORQUE

	RPM	TORQUE % FULL LOAD	TORQUE LB.-FT.	AMPERES
LOCKED ROTOR	0	218	242	520
PULL UP	1565	189	210	440
BREAKDOWN	3395	227	251	259
FULL LOAD	3555	100	111	81.1

AMPERES SHOWN FOR 460 VOLT CONNECTION. IF OTHER CONNECTIONS ARE AVAILABLE, THE AMPERES WILL VARY INVERSELY WITH THE RATED VOLTAGE.

TYPICAL DATA
 XE MOTOR-NEMA NOM. EFF. 93.6 %
 GUARANTEED MIN. EFF. 92.4%

 A MEMBER OF THE ABB GROUP	DRAWN BY: J.J.HARRISON CHECKED BY: G. R. WEBB APPROVED BY: W.L.SMITH DATE: 10/16/02	AC MOTOR PERFORMANCE DATA	A36WG0107-R001 DATE ISSUED 12/14/10
--	--	--	--

FRAME 365TS

VOLTS 230/460

NEMA DESIGN B

TEST S.O. TYPICAL DATA

HP 75

AMPS 161/80.7

CODE LETTER F

TEST DATE ---

TYPE P

DUTY CONT

ENCLOSURE TEFC

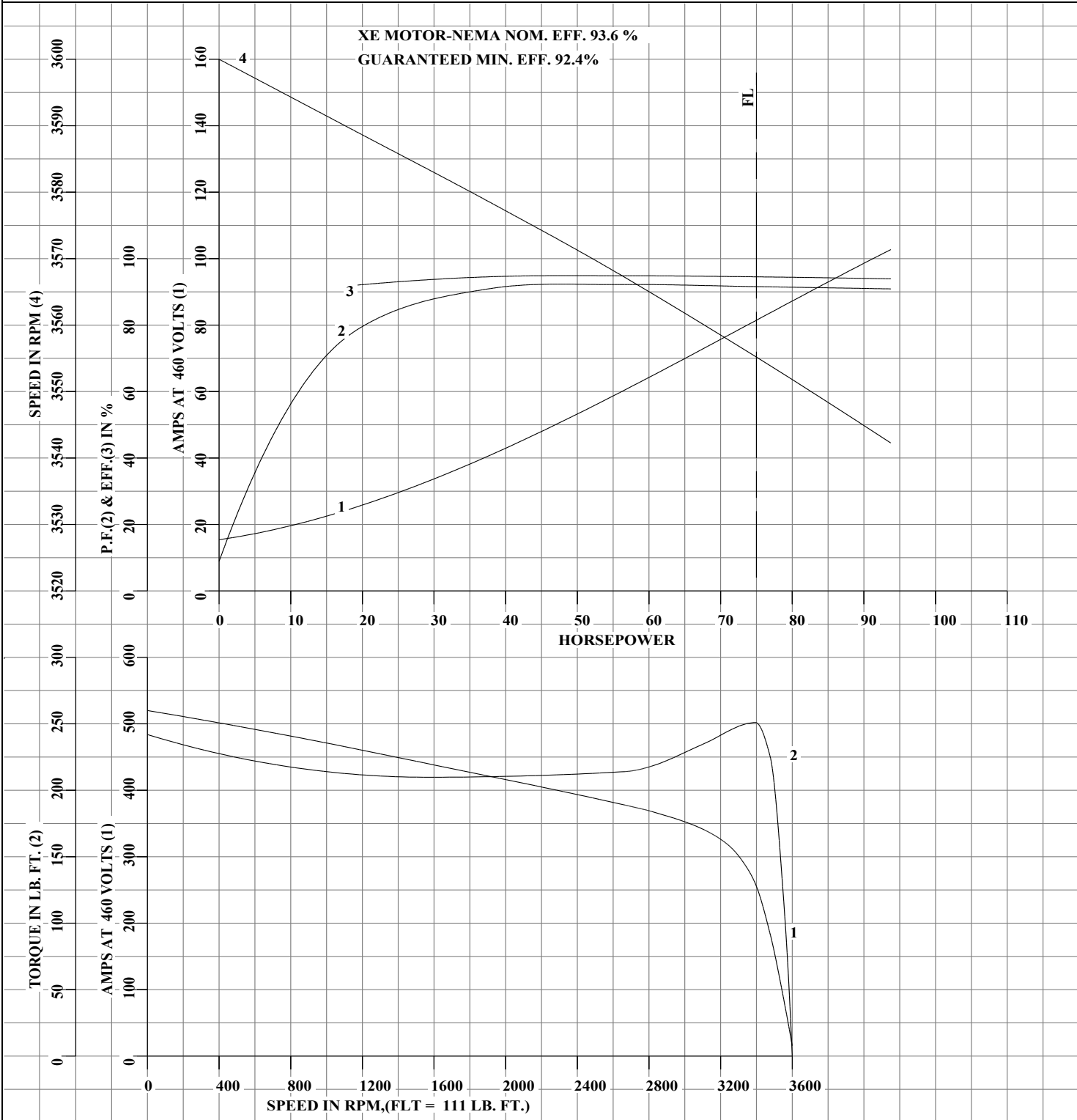
STATOR RES. @ 25°C .0186/.0744

PHASE / HERTZ 3/60

AMB °C / INSUL 40/F

E/S 892019

OHMS (BETWEEN LINES)



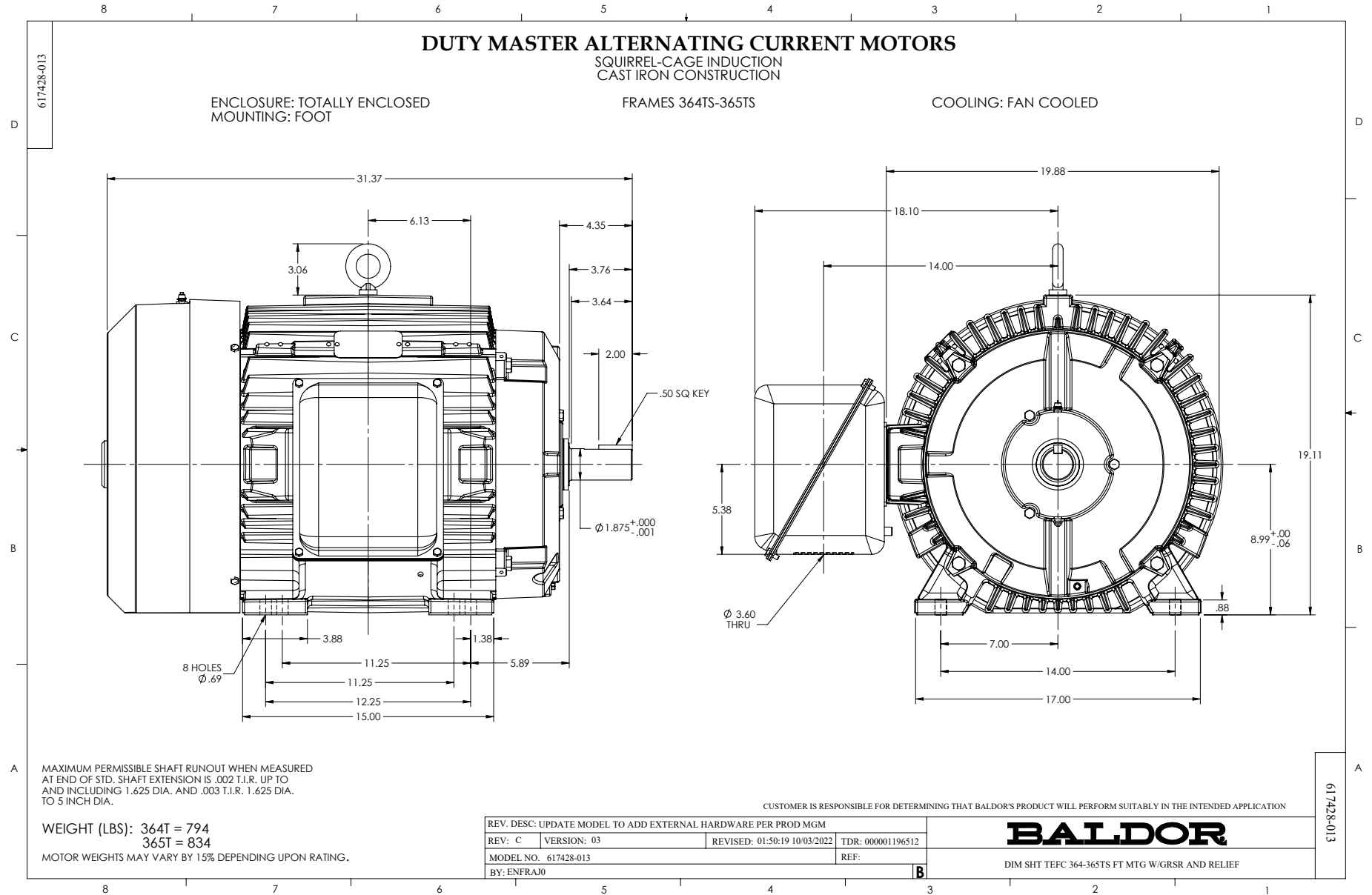
AMPERES SHOWN FOR 230/460 VOLT CONNECTION, IF OTHER VOLTAGE CONNECTIONS ARE AVAILABLE, THE AMPERES WILL VARY INVERSELY WITH THE RATED VOLTAGE.



DRAWN BY: J.J.HARRISON
 CHECKED BY: G. R. WEBB
 APPROVED BY: W.L.SMITH
 DATE: 10/16/02

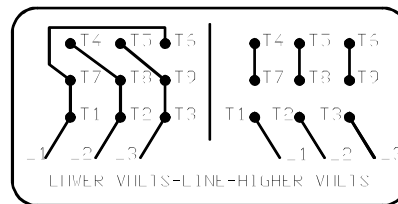
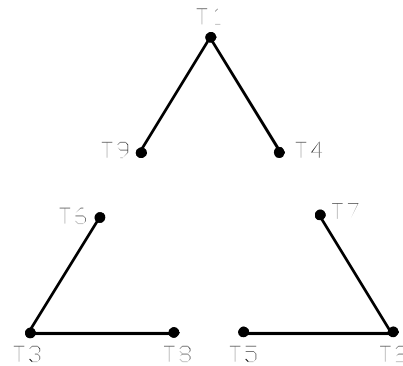
AC MOTOR
 PERFORMANCE
 DATA

A36WG0107-R001
 ISSUE DATE 12/14/10



416820-002

A-C MOTOR
CONNECTION DIAGRAM
STANDARD 9 LEAD DELTA-CONNECTED



(N.P. 1575-B)

416820-002

REV. DESC: FONT CHANGE FOR PDF SEARCHABLE		
REV. LTR: A	VERSION: 01	TDR: 000001009382
FILE: \MGA\00000\661	REVISED: 02:46:19 02/13/2020	BY: MGHMTT
MTL: -	© □	

BALDOR - RELIANCE®

CONN DIAG - STANDARD 9 LEAD, DELTA-CONNECTED

SH 1 of 1