

**BALDOR • RELIANCE**

---

# Customer information packet

## EM4104T-8

30HP, 1770RPM, 3PH, 60HZ, 286T, 1056M, TEFC, F1

Class - None

Division - Not Applicable

Copyright © All product information within this document is subject to ABB Motors and Mechanical Inc. copyright © protection, unless otherwise noted.

10/5/2024 1:23:24 AM

## Specifications

Enclosure	TEFC
Frame	286T
Frame Material	Iron
Frequency	60.00 Hz
Haz Area Class and Group	None
Haz Area Division	Not Applicable
Motor Letter Type	Three Phase
Output @ Frequency	30.000 HP @ 60 HZ
Phase	3
Synchronous Speed @ Frequency	1800 RPM @ 60 HZ
Voltage @ Frequency	200.0 V @ 60 HZ
Agency Approvals	CSA EEV NEMA PREMIUM NEMA_PREMIUM UR
Ambient Temperature	40 °C
Auxillary Box	No Auxillary Box
Auxillary Box Lead Termination	None
Base Indicator	Rigid
Bearing Grease Type	Polyrex EM (-20F +300F)
Blower	None
Current @ Voltage	84.000 A @ 200.0 V
Design Code	B
Drip Cover	No Drip Cover
Duty Rating	CONT
Efficiency @ 100% Load	93.6 %
Electrically Isolated Bearing	Not Electrically Isolated
Feedback Device	NO FEEDBACK
Front Face Code	Standard
Front Shaft Indicator	None
Heater Indicator	No Heater
High Voltage Full Load Amps	84.0 a

## Part detail

Revision	W
Type	AC
Mech. spec.	10C151
Base	
Status	PRD/A
Elec. spec.	10WGY760
Layout	10LYC151
Eff. date	06-27-2024
CD Diagram	CD0695
Poles	04
Leads	6#6
Proprietary	False
Created date	04-29-2010

<b>Insulation Class</b>	F
<b>Inverter Code</b>	Inverter Ready
<b>KVA Code</b>	H
<b>Lifting Lugs</b>	Standard Lifting Lugs
<b>Locked Bearing Indicator</b>	Locked Bearing
<b>Motor Lead Exit</b>	Ko Box
<b>Motor Lead Quantity/Wire Size</b>	6 @ 6 AWG
<b>Motor Lead Termination</b>	Flying Leads
<b>Motor Standards</b>	NEMA
<b>Motor Type</b>	1056M
<b>Mounting Arrangement</b>	F1
<b>Number of Poles</b>	4
<b>Overall Length</b>	27.76 IN
<b>Power Factor</b>	83
<b>Product Family</b>	General Purpose
<b>Pulley End Bearing Type</b>	Ball
<b>Pulley Face Code</b>	Standard
<b>Pulley Shaft Indicator</b>	Standard
<b>Rodent Screen</b>	None
<b>RoHS Status</b>	ROHS NON-COMPLIANT
<b>Service Factor</b>	1.15
<b>Shaft Diameter</b>	1.875 IN
<b>Shaft Extension Location</b>	Pulley End
<b>Shaft Ground Indicator</b>	No Shaft Grounding
<b>Shaft Rotation</b>	Reversible
<b>Shaft Slinger Indicator</b>	Shaft Slinger
<b>Speed</b>	1770 rpm
<b>Speed Code</b>	Single Speed
<b>Starting Method</b>	Part Winding
<b>Thermal Device - Bearing</b>	None
<b>Thermal Device - Winding</b>	Normally Closed Thermostat
<b>Vibration Sensor Indicator</b>	No Vibration Sensor
<b>Winding Thermal 1</b>	None
<b>Winding Thermal 2</b>	None

**Nameplate**

**NP3443L**

<b>CAT.NO.</b>	EM4104T-8	<b>CUST. P/N</b>				<b>ENCL</b>	<b>TEFC</b>
<b>SPEC.</b>	10C151Y760G1	<b>CC</b>	010A	<b>FRAME</b>	286T	<b>SER.NO.</b>	
<b>HP</b>	30	<b>CLASS</b>	F	<b>HZ</b>	60		
<b>R.P.M.</b>	1770	<b>PH</b>	3	<b>DES</b>	B		
<b>VOLTS</b>	200	<b>CODE</b>	H	<b>ODE BRG</b>	6309	<b>DE BRG</b>	6311
<b>AMPS</b>	84						
<b>RATING</b>	40C AMB-CONT	<b>NEMA NOM. EFF.</b>	93.6	<b>GREASE</b>	POLYREX EM		
<b>P.F.</b>	83	<b>SER.F.</b>	1.15	<b>VPWM INVERTER READY</b>			
<b>HTR-VOLTS</b>		<b>HTR-AMPS</b>		<b>HTR-WATTS</b>			

**Accessories**

<b>Part number</b>	<b>Description</b>	<b>Multiplier</b>
10-1305	C FACE KIT	A8
10EP1502A01SP	D-FLANGE KIT	A8

**AC Induction Motor Performance Data**

Record # 30993

Typical performance - not guaranteed values

<b>Winding:</b> 10WGY760-R001		<b>Type:</b> 1056M		<b>Enclosure:</b> TEFC	
<b>Nameplate Data</b>			<b>200 V, 60 Hz: Single Voltage Motor</b>		
<b>Rated Output (HP)</b>	30	<b>Full Load Torque</b>	89 LB-FT		
<b>Volts</b>	200	<b>Start Configuration</b>	direct on line		
<b>Full Load Amps</b>	81	<b>Breakdown Torque</b>	279 LB-FT		
<b>R.P.M.</b>	1770	<b>Pull-up Torque</b>	133 LB-FT		
<b>Hz</b>	60 <b>Phase</b>	3	<b>Locked-rotor Torque</b>	151 LB-FT	
<b>NEMA Design Code</b>	<b>B KVA Code</b>	H	<b>Starting Current</b>	560 A	
<b>Service Factor (S.F.)</b>		1.15	<b>No-load Current</b>	38.9 A	
<b>NEMA Nom. Eff.</b>	93.6 <b>Power Factor</b>	83	<b>Line-line Res. @ 25°C</b>	0.0405 Ω	
<b>Rating - Duty</b>	40C AMB-CONT		<b>Temp. Rise @ Rated Load</b>	56°C	
<b>S.F. Amps</b>			<b>Temp. Rise @ S.F. Load</b>	68°C	

**Load Characteristics 200 V, 60 Hz, 30 HP**

<b>% of Rated Load</b>	<b>25</b>	<b>50</b>	<b>75</b>	<b>100</b>	<b>125</b>	<b>150</b>	<b>S.F.</b>
<b>Power Factor</b>	42	64	73	82	82	82	82
<b>Efficiency</b>	90.3	93.5	94.3	94.2	93.4	93.2	93.7
<b>Speed</b>	1794	1787	1781	1775	1767	1758	1770
<b>Line amperes</b>	43.2	54.6	70.6	84.3	105	126	96.7

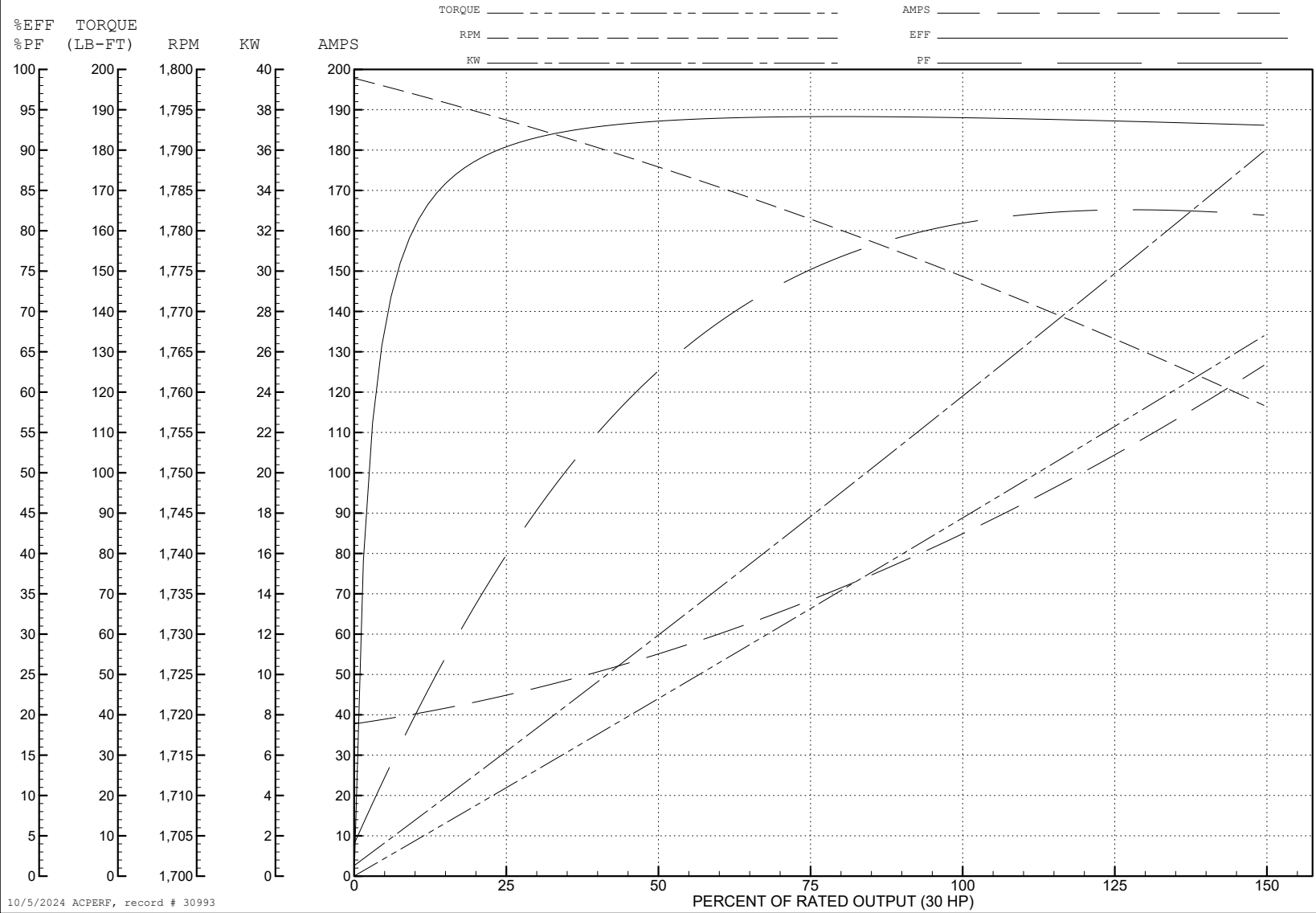
ABB Motors and Mechanical Inc.

WINDING # 10WGY760

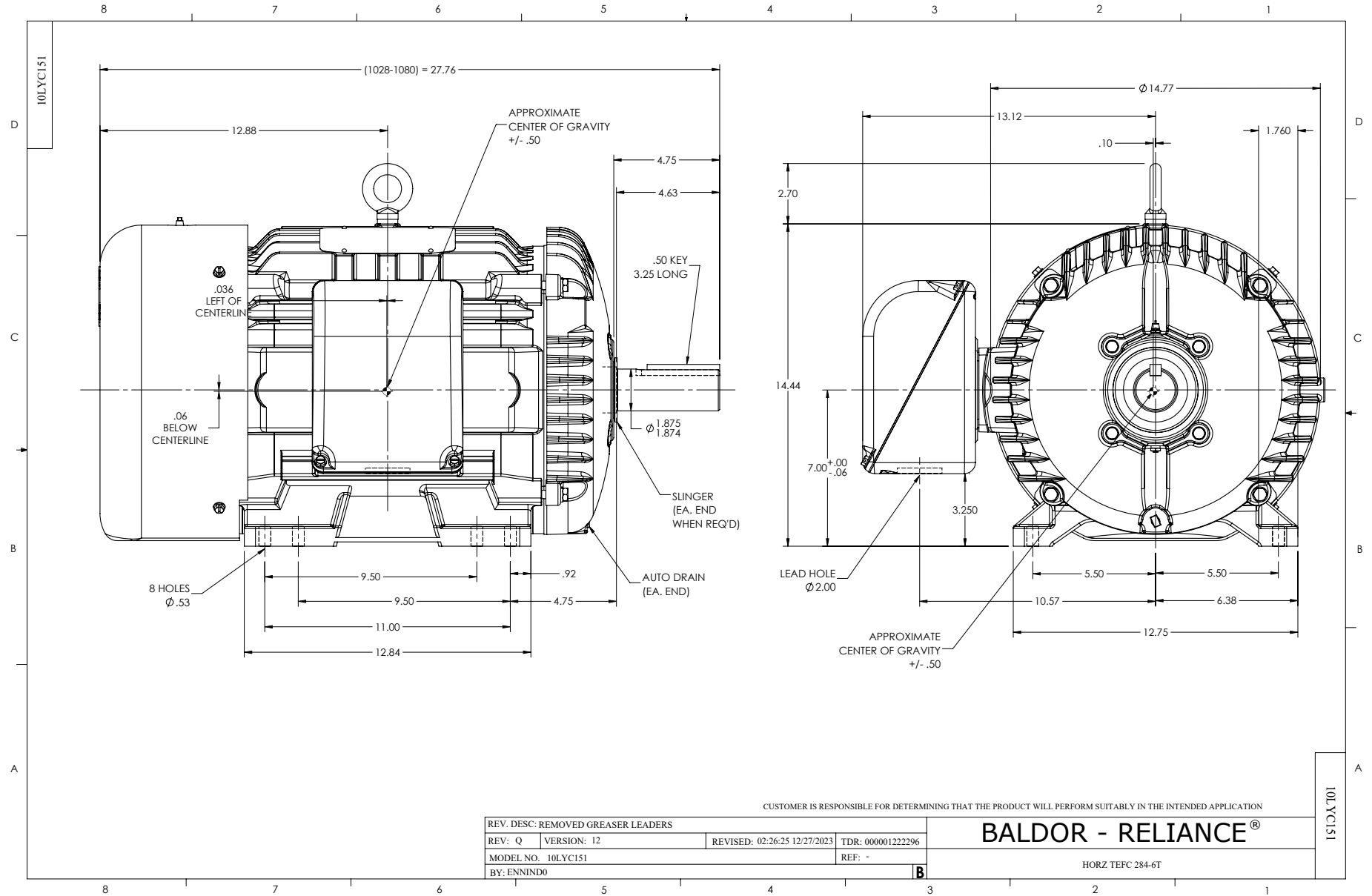
Typical performance - not guaranteed values.

30 HP 3 PH 60 HZ 1770 RPM 200 V 1056M

TORQUES (LB-FT): PO=279 PU=133 LR=151 LRA=560



10/5/2024 ACPERF, record # 30993



CUSTOMER IS RESPONSIBLE FOR DETERMINING THAT THE PRODUCT WILL PERFORM SUITABLY IN THE INTENDED APPLICATION

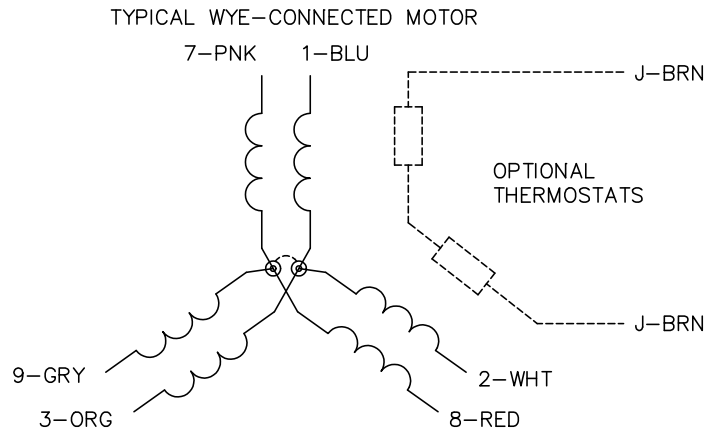
REV. Q	VERSION: 12	REVISED: 02:26:25 12/27/2023	TDR: 000001222296
MODEL NO. 10LYC151		REF: -	
BY: ENNIND0			

**BALDOR - RELIANCE**®

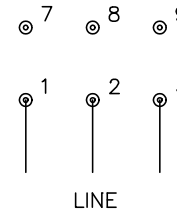
HORZ TEFC 284-6T



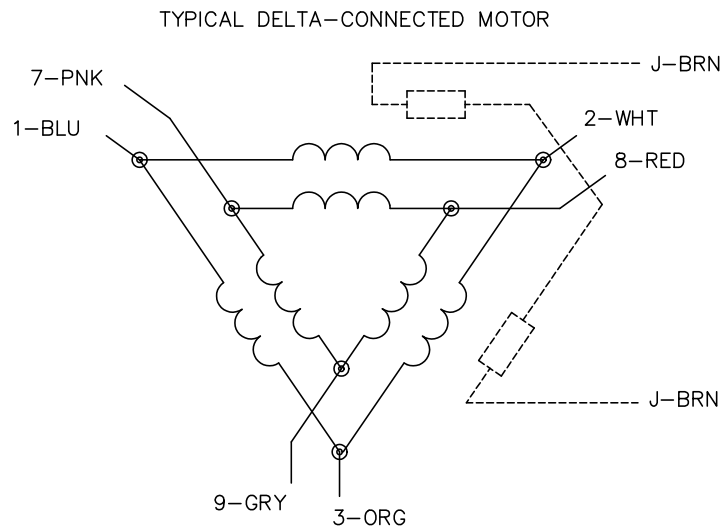
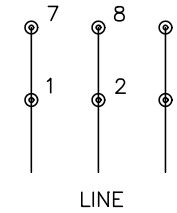
CD0695



START CONNECTION



RUN CONNECTION



NOTES:

1. MOTOR MAY BE WYE CONNECTED OR DELTA CONNECTED.
2. INTERCHANGE ANY TWO LINE LEADS TO REVERSE ROTATION.
3. OPTIONAL THERMOSTATS ARE PROVIDED WHEN SPECIFIED.
4. ACTUAL NUMBER OF INTERNAL PARALLEL CIRCUITS MAY VARY.
5. LEAD COLORS ARE OPTIONAL. LEADS MUST ALWAYS BE NUMBERED AS SHOWN.

CD0695

REV. DESC: REVISE TO SHOW OPTIONAL COLORS			
REV. LTR: C	BY: JLP	REVISED: 01/21/99 3:19	TDR: 0171435
S69000		FILE: AAA00005151	MDL: -
		MTL: -	

**BALDOR ELECTRIC Co.**

3PH, SV, 6 LEADS, PART WINDING START