

BALDOR • RELIANCE

Customer information packet

EM3771T-G

10HP, 3490RPM, 3PH, 60HZ, 215T, TEFC, F1

Class - None

Division - Not Applicable

Copyright © All product information within this document is subject to ABB Motors and Mechanical Inc. copyright © protection, unless otherwise noted.

6/18/2026 6:17:22 AM

Specifications

Enclosure	TEFC
Frame	215T
Frame Material	Iron
Frequency	60.00 Hz
Haz Area Class and Group	None
Haz Area Division	Not Applicable
Motor Letter Type	Three Phase
Output @ Frequency	10.000 HP @ 60 HZ
Phase	3
Synchronous Speed @ Frequency	3600 RPM @ 60 HZ
Voltage @ Frequency	460.0 V @ 60 HZ 230.0 V @ 60 HZ
Agency Approvals	CSA CSA EEV NEMA PREMIUM UR
Ambient Temperature	40 °C
Auxiliary Box	NO AUXILLARY BOX
Auxiliary Box Lead Termination	None
Base Indicator	Rigid
Bearing Grease Type	Polyrex EM (-20F +300F)
Blower	None
Current @ Voltage	24.800 A @ 208.0 V 23.600 A @ 230.0 V 11.800 A @ 460.0 V
Design Code	B
Drip Cover	No Drip Cover
Duty Rating	CONT
Efficiency @ 100% Load	90.2 %
Electrically Isolated Bearing	Not Electrically Isolated
Feedback Device	NO FEEDBACK
Heater Indicator	No Heater

Part detail

Revision	F
Type	AC
Mech. spec.	
Base	
Status	PRD/A
Elec. spec.	07WGY855
Layout	07LYL783
Eff. date	04-29-2024
CD Diagram	CD0005
Poles	02
Leads	9#14
Proprietary	False
Created date	04-12-2019

High Voltage Full Load Amps	11.8 a
Insulation Class	H
Inverter Code	Inverter Ready
IP Rating	NONE
KVA Code	G
Lifting Lugs	Standard Lifting Lugs
Locked Bearing Indicator	Locked Bearing
Motor Lead Termination	Flying Leads
Motor Standards	NEMA
Motor Type	0730M
Mounting Arrangement	F1
Number of Poles	2
Overall Length	18.45 IN
Power Factor	87
Product Family	General Purpose
Pulley Face Code	Standard
Rodent Screen	None
Service Factor	1.15
Shaft Diameter	1.375 IN
Shaft Ground Indicator	Shaft Grounding
Shaft Rotation	Reversible
Speed	3490 rpm
Speed Code	Single Speed
Starting Method	Direct on line
Thermal Device - Winding	None
Vibration Sensor Indicator	No Vibration Sensor
Winding Thermal 1	None
Winding Thermal 2	None

Nameplate

NP3441LUA

CAT.NO.	EM3771T-G						
SPEC	07-0000-0087						
HP	10						
VOLTS	230/460						
AMPS	23.6/11.8						
RPM	3490						
FRAME	215T		HZ	60		PH	3
SF	1.15	CODE	G	DES	B	CLASS	H
NEMA NOM. EFF	90.2	PF	87				
RATING	40C AMB-CONT						
CC	010A						
ENCL	TEFC	SER					
DE	6307	ODE	6206				
VPWM INVERTER READY							
CT6-60H(10:1)VT3-60H(20:1	50HZ 10HP 190/380V 27.8/13.9A						SF1.0

AC Induction Motor Performance Data

Record # 69610

Typical performance - not guaranteed values

Winding: 07WGY855-R014		Type: 0730M	Enclosure: TEFC		
Nameplate Data			460 V, 60 Hz: High Voltage Connection		
Rated Output (HP)	10	Full Load Torque	15.1 LB-FT		
Volts	230/460	Start Configuration	direct on line		
Full Load Amps	23.6/11.8	Breakdown Torque	56.3 LB-FT		
R.P.M.	3490	Pull-up Torque	17.7 LB-FT		
Hz	60 Phase	3	Locked-rotor Torque	23.8 LB-FT	
NEMA Design Code	B	KVA Code	G	Starting Current	78.5 A
Service Factor (S.F.)	1.15	No-load Current	3.65 A		
NEMA Nom. Eff.	90.2	Power Factor	87	Line-line Res. @ 25°C	1.05 Ω
Rating - Duty	40C AMB-CONT		Temp. Rise @ Rated Load	63°C	
S.F. Amps			Temp. Rise @ S.F. Load	79°C	
			Locked-rotor Power Factor	33.7	
			Rotor inertia	0.273 LB-FT ²	

Load Characteristics 460 V, 60 Hz, 10 HP

% of Rated Load	25	50	75	100	125	150	S.F.
Power Factor	60	80	87	90	90	90	90
Efficiency	88	91.4	91.3	90.5	89.5	88.2	89.9
Speed	3576	3551	3525	3497	3465	3429	3478
Line amperes	4.55	6.56	8.97	11.6	14.5	17.7	13.3

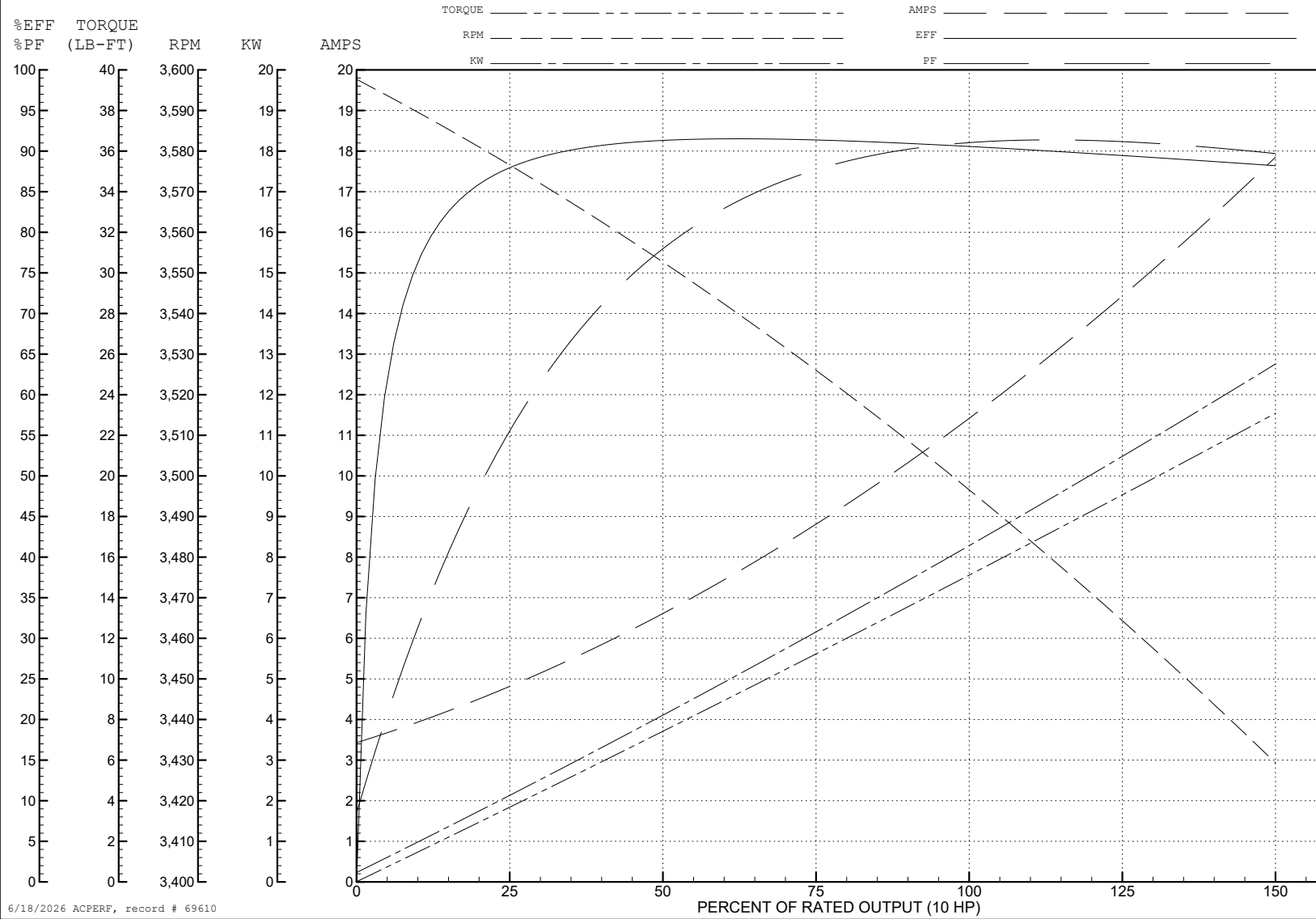
ABB Motors and Mechanical Inc.

WINDING # 07WGY855

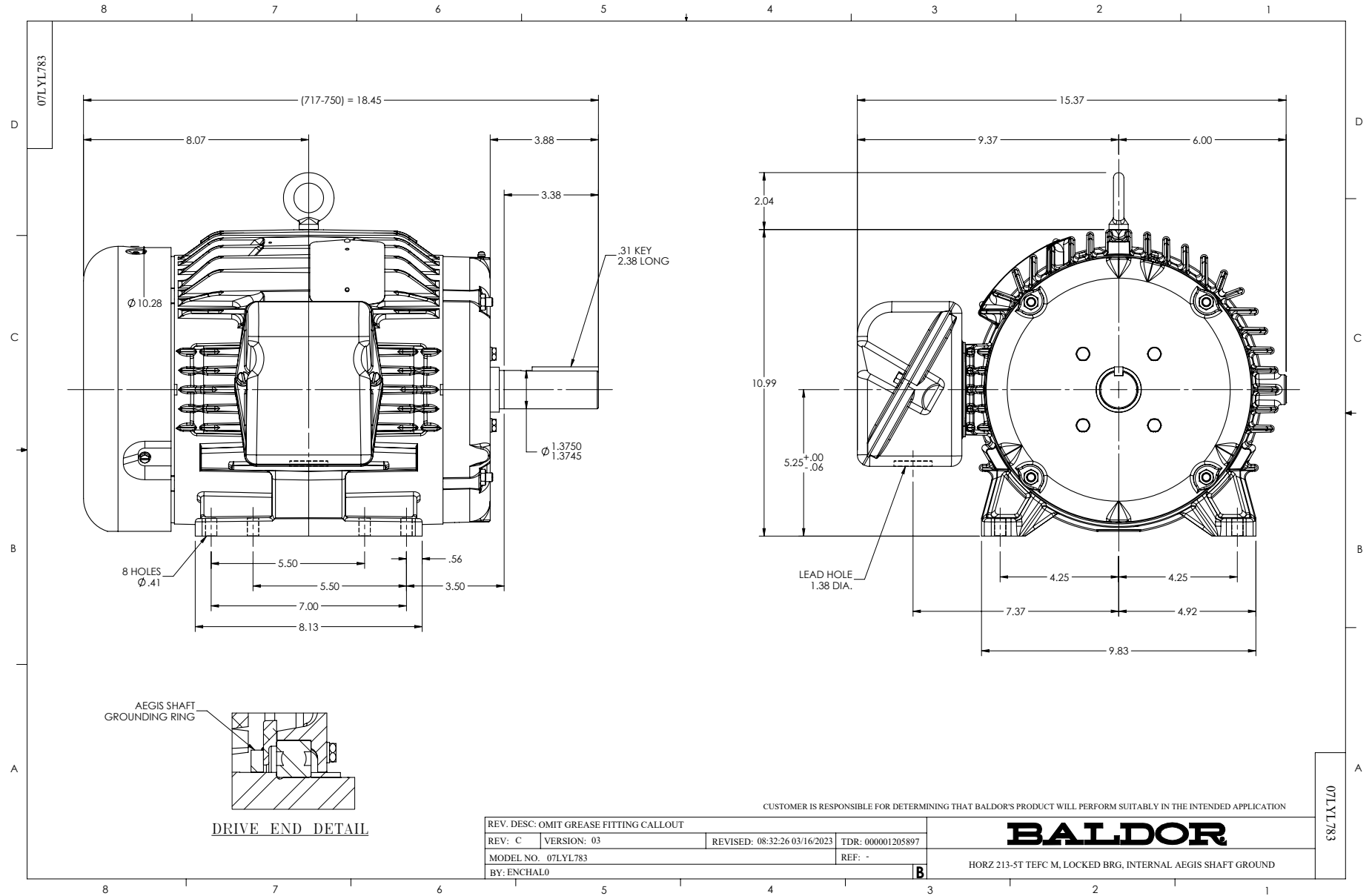
Typical performance - not guaranteed values.

10 HP 3 PH 60 HZ 3490 RPM 460 V 0730M

TORQUES (LB-FT): PO=56.3 PU=17.7 LR=23.8 LRA=78.5



6/18/2026 ACPERF, record # 69610



CD0005



LOW VOLTAGE
(2Y)



LINE

HIGH VOLTAGE
(1Y)



LINE

NOTES:

1. INTERCHANGE ANY TWO LINE LEADS TO REVERSE ROTATION.
2. OPTIONAL THERMOSTATS ARE PROVIDED WHEN SPECIFIED.
3. ACTUAL NUMBER OF INTERNAL PARALLEL CIRCUITS MAY BE A MULTIPLE OF THOSE SHOWN ABOVE.
4. LEAD COLORS ARE OPTIONAL. LEADS MUST ALWAYS BE NUMBERED AS SHOWN.

CD0005

REV. DESC: REVISE TO SHOW OPTIONAL COLORS			
REV. LTR: E	BY: JLP	REVISED: 01/19/99 10:15	TDR: 0171435
S00000		FILE: AAA00005140	MDL: -
		MTL: -	

BALDOR ELECTRIC Co.

3PH, DV, 9 LEADS