

**BALDOR • RELIANCE**

---

# Customer information packet

## EM3771T-8

10HP, 3490RPM, 3PH, 60HZ, 215T, 0730M, TEFC, F1

Class - None

Division - Not Applicable

## Specifications

Enclosure	TEFC
Frame	215T
Frame Material	Iron
Frequency	60.00 Hz
Haz Area Class and Group	None
Haz Area Division	Not Applicable
Motor Letter Type	Three Phase
Output @ Frequency	10.000 HP @ 60 HZ
Phase	3
Synchronous Speed @ Frequency	3600 RPM @ 60 HZ
Voltage @ Frequency	200.0 V @ 60 HZ
Agency Approvals	CSA EEV CURUSEEV NEMA PREMIUM NEMA_PREMIUM UR
Ambient Temperature	40 °C
Auxillary Box	No Auxillary Box
Auxillary Box Lead Termination	None
Base Indicator	Rigid
Bearing Grease Type	Polyrex EM (-20F +300F)
Blower	None
Current @ Voltage	26.800 A @ 200.0 V
Design Code	B
Drip Cover	No Drip Cover
Duty Rating	CONT
Efficiency @ 100% Load	90.2 %
Electrically Isolated Bearing	Not Electrically Isolated
Feedback Device	NO FEEDBACK
Front Face Code	Standard
Front Shaft Indicator	None
Heater Indicator	No Heater

## Part detail

Revision	S
Type	AC
Mech. spec.	07H002
Base	
Status	PRD/A
Elec. spec.	07WGY279
Layout	07LYH002
Eff. date	04-29-2024
CD Diagram	CD0006
Poles	02
Leads	3#10
Proprietary	False
Created date	01-27-2012

High Voltage Full Load Amps	26.8 a
Insulation Class	F
Inverter Code	Inverter Ready
KVA Code	G
Lifting Lugs	Standard Lifting Lugs
Locked Bearing Indicator	No Locked Bearing
Motor Lead Exit	Ko Box
Motor Lead Quantity/Wire Size	3 @ 10 AWG
Motor Lead Termination	Flying Leads
Motor Standards	NEMA
Motor Type	0730M
Mounting Arrangement	F1
Number of Poles	2
Overall Length	18.45 IN
Power Factor	87
Product Family	General Purpose
Pulley End Bearing Type	Ball
Pulley Face Code	Standard
Pulley Shaft Indicator	Standard
Rodent Screen	None
RoHS Status	ROHS COMPLIANT
Service Factor	1.15
Shaft Diameter	1.375 IN
Shaft Extension Location	Pulley End
Shaft Ground Indicator	No Shaft Grounding
Shaft Rotation	Reversible
Shaft Slinger Indicator	No Slinger
Speed	3490 rpm
Speed Code	Single Speed
Starting Method	Direct on line
Thermal Device - Bearing	None
Thermal Device - Winding	None
Vibration Sensor Indicator	No Vibration Sensor
Winding Thermal 1	None

**Winding Thermal 2**

**None**

---

**Nameplate****NP3441L**

<b>CAT.NO.</b>	EM3771T-8						
<b>SPEC.</b>	07H002Y279G1						
<b>HP</b>	10						
<b>VOLTS</b>	200						
<b>AMP</b>	26.8						
<b>RPM</b>	3490						
<b>FRAME</b>	215T		<b>HZ</b>	60		<b>PH</b>	3
<b>SER.F.</b>	1.15	<b>CODE</b>	G	<b>DES</b>	B	<b>CL</b>	F
<b>NEMA-NOM-EFF</b>	90.2	<b>PF</b>	87				
<b>RATING</b>	40C AMB-CONT						
<b>CC</b>	010A						
<b>DE</b>	6307	<b>ODE</b>	6206				
<b>ENCL</b>	TEFC	<b>SN</b>					

**VPWM INVERTER READY****CT6-60H(10:1)VT3-60H(20:1)**

**Accessories**

<b>Part number</b>	<b>Description</b>	<b>Multiplier</b>
37-1304	C FACE KIT	A8

**AC Induction Motor Performance Data**

Record # 36762

Typical performance - not guaranteed values

Winding: 07WGY279-R001		Type: 0730M		Enclosure: TEFC	
<b>Nameplate Data</b>			<b>200 V, 60 Hz: Single Voltage Motor</b>		
Rated Output (HP)	10	Full Load Torque	15.1 LB-FT		
Volts	200	Start Configuration	direct on line		
Full Load Amps	26.8	Breakdown Torque	54.3 LB-FT		
R.P.M.	3490	Pull-up Torque	17.1 LB-FT		
Hz	60 Phase	3	Locked-rotor Torque	22.9 LB-FT	
NEMA Design Code	B	KVA Code	G	Starting Current	175 A
Service Factor (S.F.)	1.15	No-load Current	7.99 A		
NEMA Nom. Eff.	90.2	Power Factor	87	Line-line Res. @ 25°C	0.219 Ω
Rating - Duty	40C AMB-CONT		Temp. Rise @ Rated Load	65°C	
S.F. Amps			Temp. Rise @ S.F. Load	83°C	
			Locked-rotor Power Factor	34.1	
			Rotor inertia	0.273 LB-FT <sup>2</sup>	

**Load Characteristics 200 V, 60 Hz, 10 HP**

% of Rated Load	25	50	75	100	125	150	S.F.
Power Factor	62	81	89	90	91	90	90
Efficiency	88.1	91.5	91.2	90.4	89	87.9	90.1
Speed	3576	3550	3523	3495	3460	3423	3477
Line amperes	10.1	14.9	20.4	26.5	33.4	41	30.9

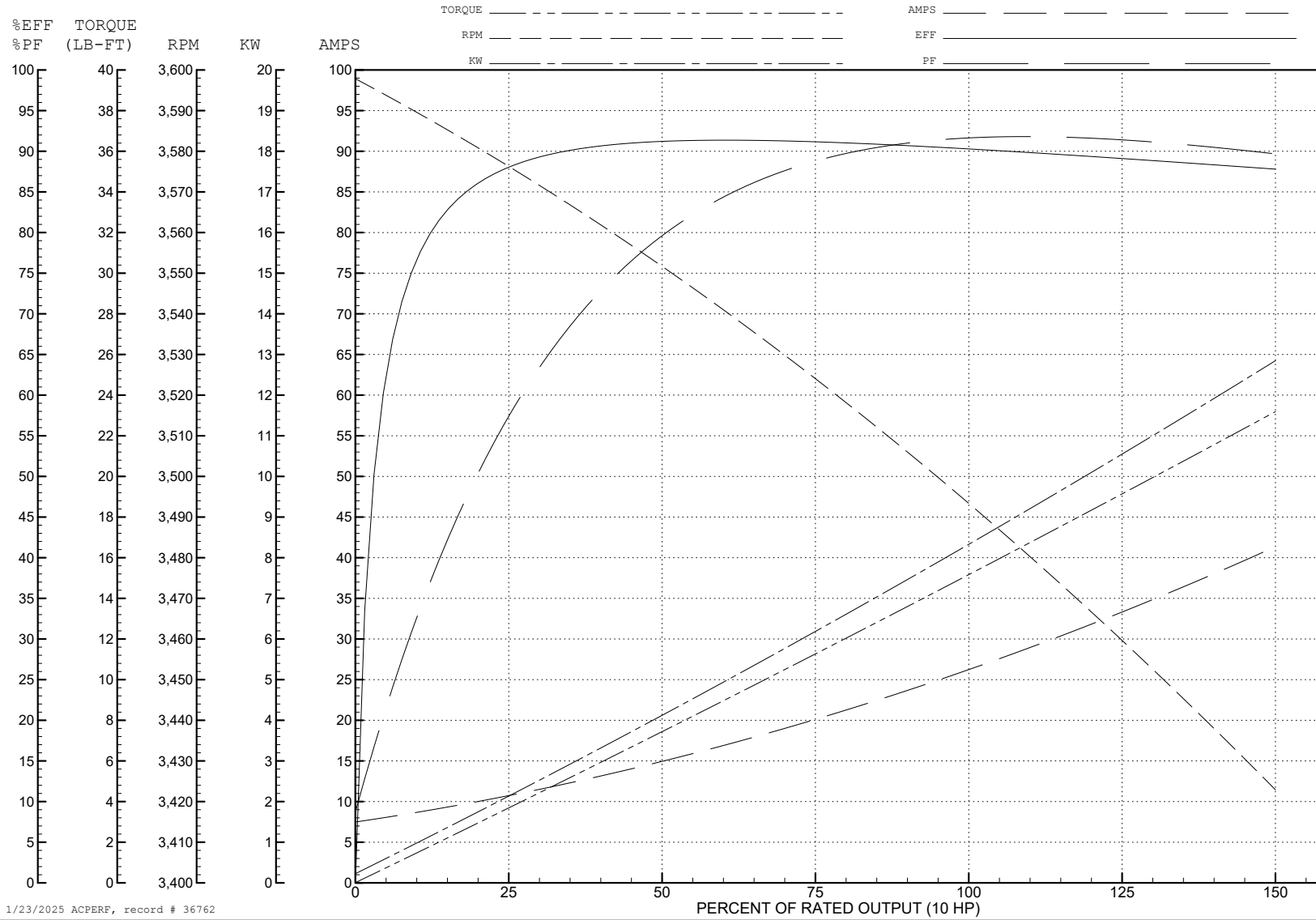
ABB Motors and Mechanical Inc.

WINDING # 07WGY279

Typical performance - not guaranteed values.

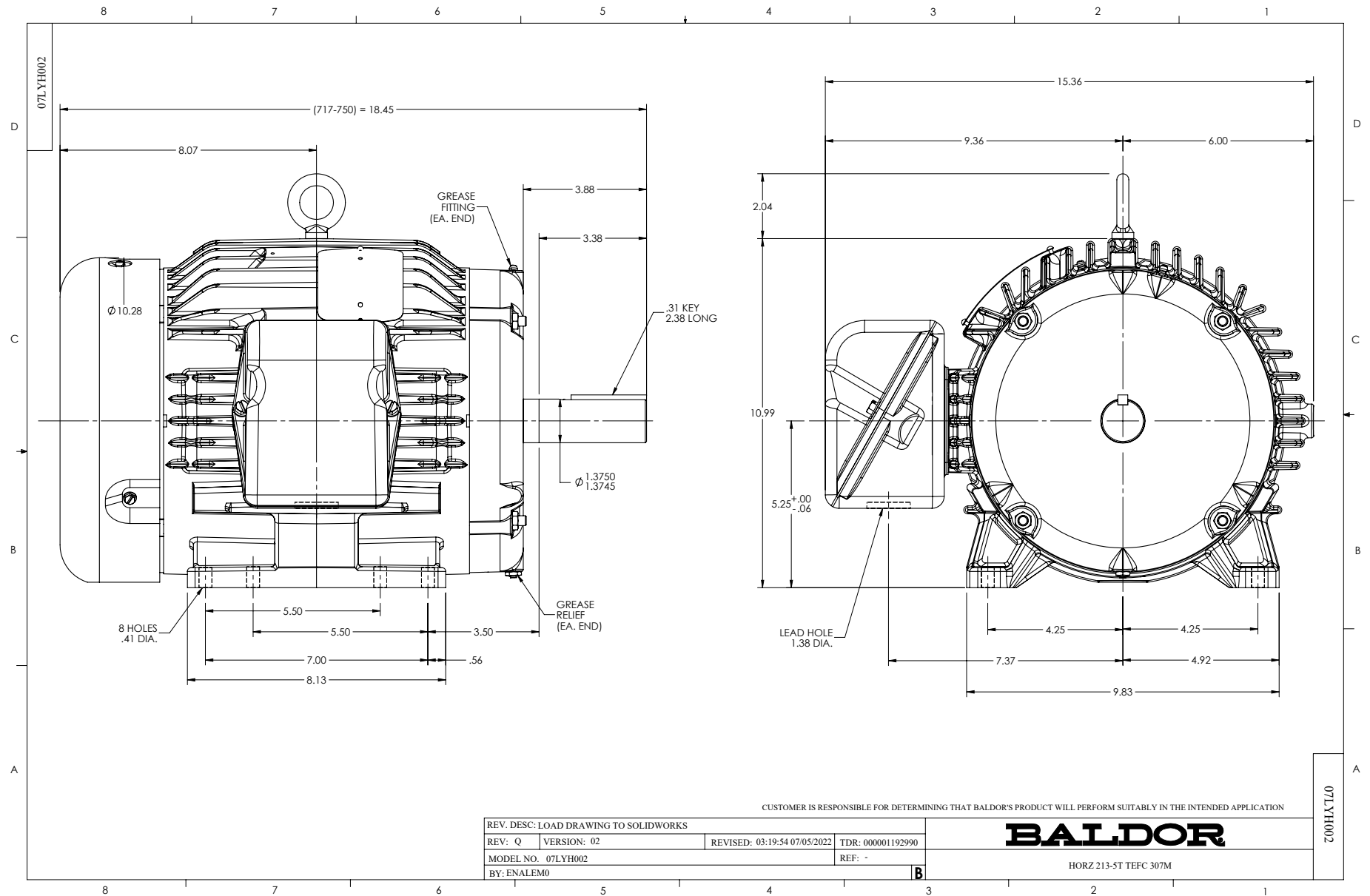
10 HP 3 PH 60 HZ 3490 RPM 200 V 0730M

TORQUES (LB-FT): PO=54.3 PU=17.1 LR=22.9 LRA=175



1/23/2025 ACPERF, record # 36762





CD0006



NOTES:

1. THREE LEAD MOTOR MAY BE EITHER WYE CONNECTED OR DELTA CONNECTED.
2. INTERCHANGE ANY TWO LINE LEADS TO REVERSE ROTATION.
3. OPTIONAL THERMOSTATS ARE PROVIDED WHEN SPECIFIED.
4. ACTUAL NUMBER OF INTERNAL PARALLEL CIRCUITS MAY VARY.
5. LEAD COLORS ARE OPTIONAL. LEADS MUST BE NUMBERED AS SHOWN.

CD0006

REV. DESC: ADD CLASS CONN00000007		
REV. LTR: E	VERSION: 01	TDR: 000001099922
FILE: \AAA\00005\141	REVISED: 10:24:49 02/19/2019	BY: ENBRIRO
MTL: -	© □	

**BALDOR - RELIANCE®**

3PH, SV, 3 LEADS, WYE OR DELTA CONNECTED

SH 1 of 1