

ABB BALDOR RELIANCE III

Customer information packet

EM3764T-BG

3HP, 1165RPM, 3PH, 60HZ, 213T, TEFC, F1

Class - None

Division - Not Applicable

Specifications

Enclosure	TEFC
Frame	213T
Frame Material	Iron
Frequency	60.00 Hz
Haz Area Class and Group	None
Haz Area Division	Not Applicable
Motor Letter Type	Three Phase
Output @ Frequency	3.000 HP @ 60 HZ
Phase	3
Synchronous Speed @ Frequency	1200 RPM @ 60 HZ
Voltage @ Frequency	460.0 V @ 60 HZ 230.0 V @ 60 HZ
Agency Approvals	CSA CSA EEV NEMA PREMIUM UR
Ambient Temperature	40 °C
Auxiliary Box	NO AUXILLARY BOX
Auxiliary Box Lead Termination	None
Base Indicator	Rigid
Bearing Grease Type	Polyrex EM (-20F +300F)
Blower	None
Current @ Voltage	9.000 A @ 230.0 V 9.000 A @ 208.0 V 4.500 A @ 460.0 V
Design Code	B
Drip Cover	No Drip Cover
Duty Rating	CONT
Efficiency @ 100% Load	89.5 %
Electrically Isolated Bearing	Not Electrically Isolated
Feedback Device	NO FEEDBACK
Heater Indicator	No Heater

Part Detail

Revision	E
Type	AC
Mech. spec.	
Base	
Status	PRD/A
Elec. spec.	07WGX970
Layout	07LYN555
Eff. date	04-29-2024
CD Diagram	CD0005
Poles	06
Leads	9#14
Proprietary	False
Created date	04-12-2019

High Voltage Full Load Amps	4.5 a
Insulation Class	H
Inverter Code	Inverter Ready
IP Rating	NONE
KVA Code	K
Lifting Lugs	Standard Lifting Lugs
Locked Bearing Indicator	Locked Bearing
Motor Lead Termination	Flying Leads
Motor Standards	NEMA
Motor Type	0736M
Mounting Arrangement	F1
Number of Poles	6
Overall Length	18.45 IN
Power Factor	71
Product Family	General Purpose
Pulley Face Code	Standard
Rodent Screen	None
Service Factor	1.15
Shaft Diameter	1.375 IN
Shaft Ground Indicator	Shaft Grounding
Shaft Rotation	Reversible
Speed	1165 rpm
Speed Code	Single Speed
Starting Method	Direct on line
Thermal Device - Winding	None
Vibration Sensor Indicator	No Vibration Sensor
Winding Thermal 1	None
Winding Thermal 2	None

Nameplate

NP3441LUA

CAT.NO.	EM3764T-BG						
SPEC	07-0000-0095						
HP	3						
VOLTS	230/460						
AMPS	9/4.5						
RPM	1165						
FRAME	213T	HZ	60	PH	3		
SF	1.15	CODE	K	DES	B	CLASS	H
NEMA NOM. EFF	89.5	PF	71				
RATING	40C AMB-CONT						
CC	010A						
ENCL	TEFC	SER					
DE	6307	ODE	6307				
VPWM INVERTER READY							
CT6-60H(10:1)VT3-60H(20:1	50HZ 3HP 190/380V 10.4/5.2A						SF1.0

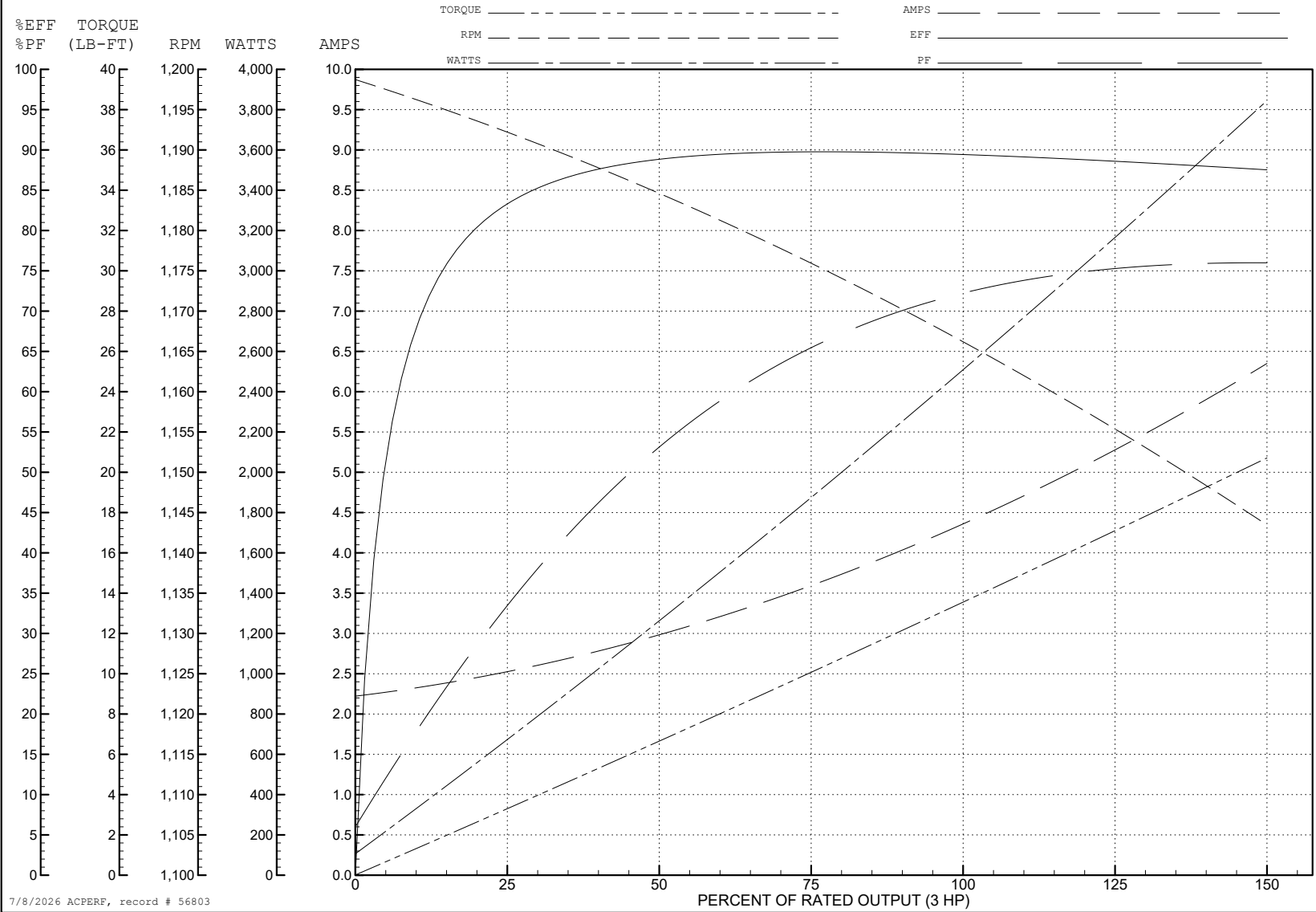
ABB Motors and Mechanical Inc.

WINDING # 07WGX970

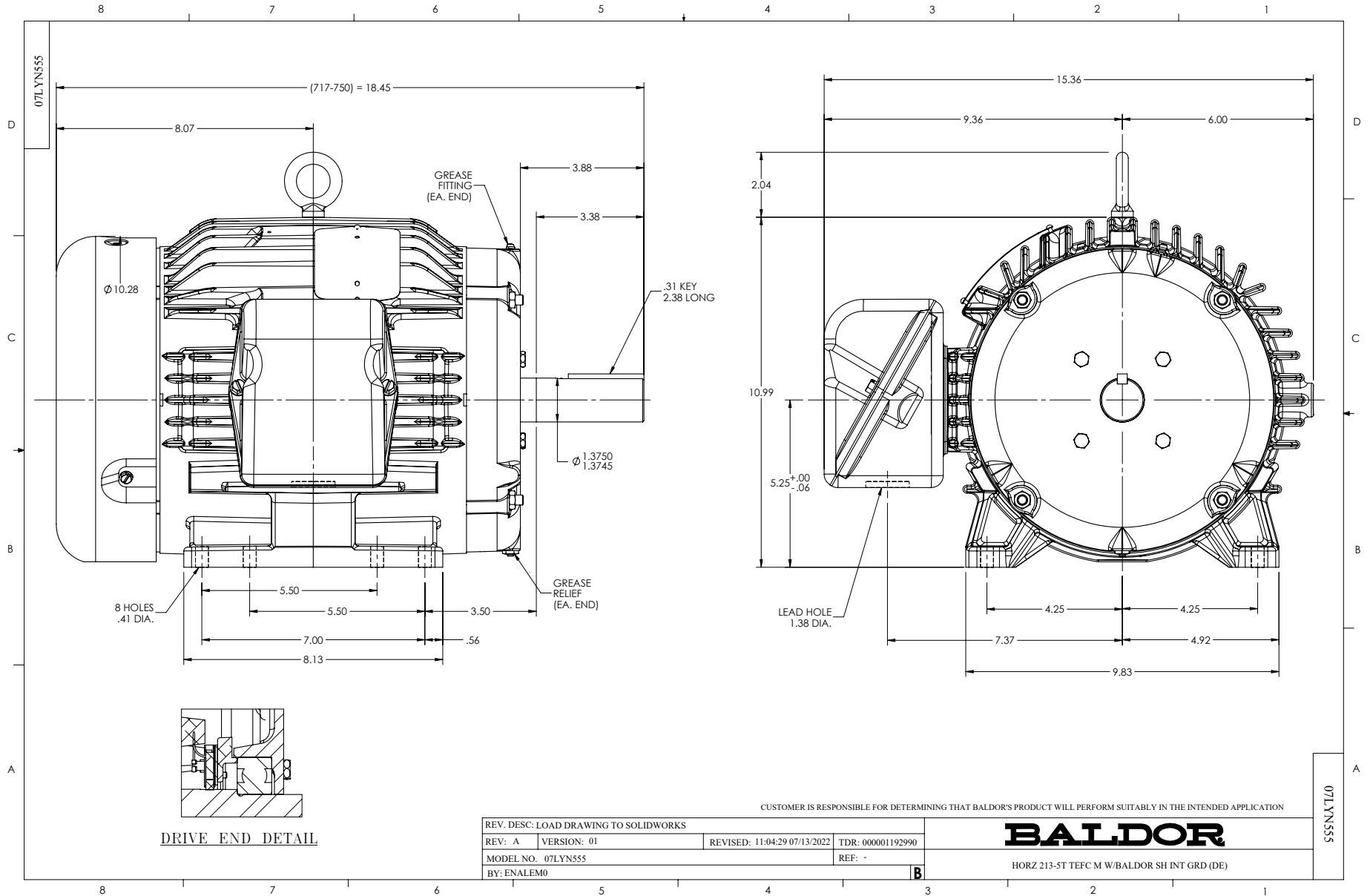
3 HP 3 PH 60 HZ 1165 RPM 460 V 0736M

Typical performance - not guaranteed values.

TORQUES (LB-FT): PO=51.71 PU=25.77 LR=31.08 LRA=32.19



7/8/2026 ACPERF, record # 56803



CD0005



LOW VOLTAGE
(2Y)



LINE

HIGH VOLTAGE
(1Y)



LINE

NOTES:

1. INTERCHANGE ANY TWO LINE LEADS TO REVERSE ROTATION.
2. OPTIONAL THERMOSTATS ARE PROVIDED WHEN SPECIFIED.
3. ACTUAL NUMBER OF INTERNAL PARALLEL CIRCUITS MAY BE A MULTIPLE OF THOSE SHOWN ABOVE.
4. LEAD COLORS ARE OPTIONAL. LEADS MUST ALWAYS BE NUMBERED AS SHOWN.

CD0005

REV. DESC: REVISE TO SHOW OPTIONAL COLORS			
REV. LTR: E	BY: JLP	REVISED: 01/19/99 10:15	TDR: 0171435
S00000		FILE: AAA00005140	MDL: -
		MTL: -	

BALDOR ELECTRIC Co.

3PH, DV, 9 LEADS