

BALDOR • RELIANCE

Customer information packet

EM3714T-8

10HP, 1770RPM, 3PH, 60HZ, 215T, 3752M, TEFC, F1

Class - None

Division - Not Applicable

Specifications

Enclosure	TEFC
Frame	215T
Frame Material	Steel
Frequency	60.00 Hz
Haz Area Class and Group	None
Haz Area Division	Not Applicable
Motor Letter Type	Three Phase
Output @ Frequency	10.000 HP @ 60 HZ
Phase	3
Synchronous Speed @ Frequency	1800 RPM @ 60 HZ
Voltage @ Frequency	200.0 V @ 60 HZ
Agency Approvals	CURUSEEV NEMA PREMIUM NEMA_PREMIUM UR CSA EEV
Ambient Temperature	40 °C
Auxillary Box	No Auxillary Box
Auxillary Box Lead Termination	None
Base Indicator	Rigid
Bearing Grease Type	Polyrex EM (-20F +300F)
Blower	None
Current @ Voltage	28.600 A @ 200.0 V
Design Code	A
Drip Cover	No Drip Cover
Duty Rating	CONT
Efficiency @ 100% Load	91.7 %
Electrically Isolated Bearing	Not Electrically Isolated
Feedback Device	NO FEEDBACK
Front Face Code	Standard
Front Shaft Indicator	None
Heater Indicator	No Heater

Part detail

Revision	K
Type	AC
Mech. spec.	37A001
Base	
Status	PRD/A
Elec. spec.	37WGR082
Layout	37LYA001
Eff. date	10-02-2024
CD Diagram	CD0006
Poles	04
Leads	3#10
Proprietary	False
Created date	08-07-2015

High Voltage Full Load Amps	28.6 a
Insulation Class	F
Inverter Code	Not Inverter
KVA Code	K
Lifting Lugs	Standard Lifting Lugs
Locked Bearing Indicator	No Locked Bearing
Motor Lead Exit	Ko Box
Motor Lead Quantity/Wire Size	3 @ 10 AWG
Motor Lead Termination	Flying Leads
Motor Standards	NEMA
Motor Type	3752M
Mounting Arrangement	F1
Number of Poles	4
Overall Length	20.51 IN
Power Factor	82
Product Family	General Purpose
Pulley End Bearing Type	Ball
Pulley Face Code	Standard
Pulley Shaft Indicator	Standard
Rodent Screen	None
Service Factor	1.15
Shaft Diameter	1.375 IN
Shaft Extension Location	Pulley End
Shaft Ground Indicator	No Shaft Grounding
Shaft Rotation	Reversible
Shaft Slinger Indicator	No Slinger
Speed	1770 rpm
Speed Code	Single Speed
Starting Method	Direct on line
Thermal Device - Bearing	None
Thermal Device - Winding	None
Vibration Sensor Indicator	No Vibration Sensor
Winding Thermal 1	None
Winding Thermal 2	None

Nameplate

NP3441L									
CAT.NO.	EM3714T-8								
SPEC.	37A001R082G1								
HP	10								
VOLTS	200								
AMP	28.6								
RPM	1770								
FRAME	215T		HZ	60		PH	3		
SER.F.	1.15	CODE	K	DES	A	CL	F		
NEMA-NOM-EFF	91.7	PF	82						
RATING	40C AMB-CONT								
CC	010A								
DE	6307	ODE	6206						
ENCL	TEFC	SN							
VPWM INVERTER READY									
CT6-60H(10:1)VT3-60H(20:1									
	SFA 32.9								

AC Induction Motor Performance Data

Record # 46159

Typical performance - not guaranteed values

Winding: 37WGR082-R002		Type: 3752M		Enclosure: TEFC	
Nameplate Data			200 V, 60 Hz: Single Voltage Motor		
Rated Output (HP)	10	Full Load Torque	29.5 LB-FT		
Volts	200	Start Configuration	direct on line		
Full Load Amps	28.6	Breakdown Torque	138 LB-FT		
R.P.M.	1770	Pull-up Torque	50.8 LB-FT		
Hz	60 Phase	3	Locked-rotor Torque	70.9 LB-FT	
NEMA Design Code	A	KVA Code	K	Starting Current	245 A
Service Factor (S.F.)	1.15		No-load Current	13.3 A	
NEMA Nom. Eff.	91.7	Power Factor	82	Line-line Res. @ 25°C	0.174 Ω
Rating - Duty	40C AMB-CONT		Temp. Rise @ Rated Load	64°C	
S.F. Amps			Temp. Rise @ S.F. Load	78°C	
			Locked-rotor Power Factor	36	
			Rotor inertia	1.28 LB-FT ²	

Load Characteristics 200 V, 60 Hz, 10 HP

% of Rated Load	25	50	75	100	125	150	S.F.
Power Factor	41	63	75	82	85	88	84
Efficiency	88.2	92	92.7	91.9	90.8	88.8	91.2
Speed	1794	1787	1780	1773	1764	1754	1768
Line amperes	14.7	18.4	23.2	28.6	34.7	41.3	32.3

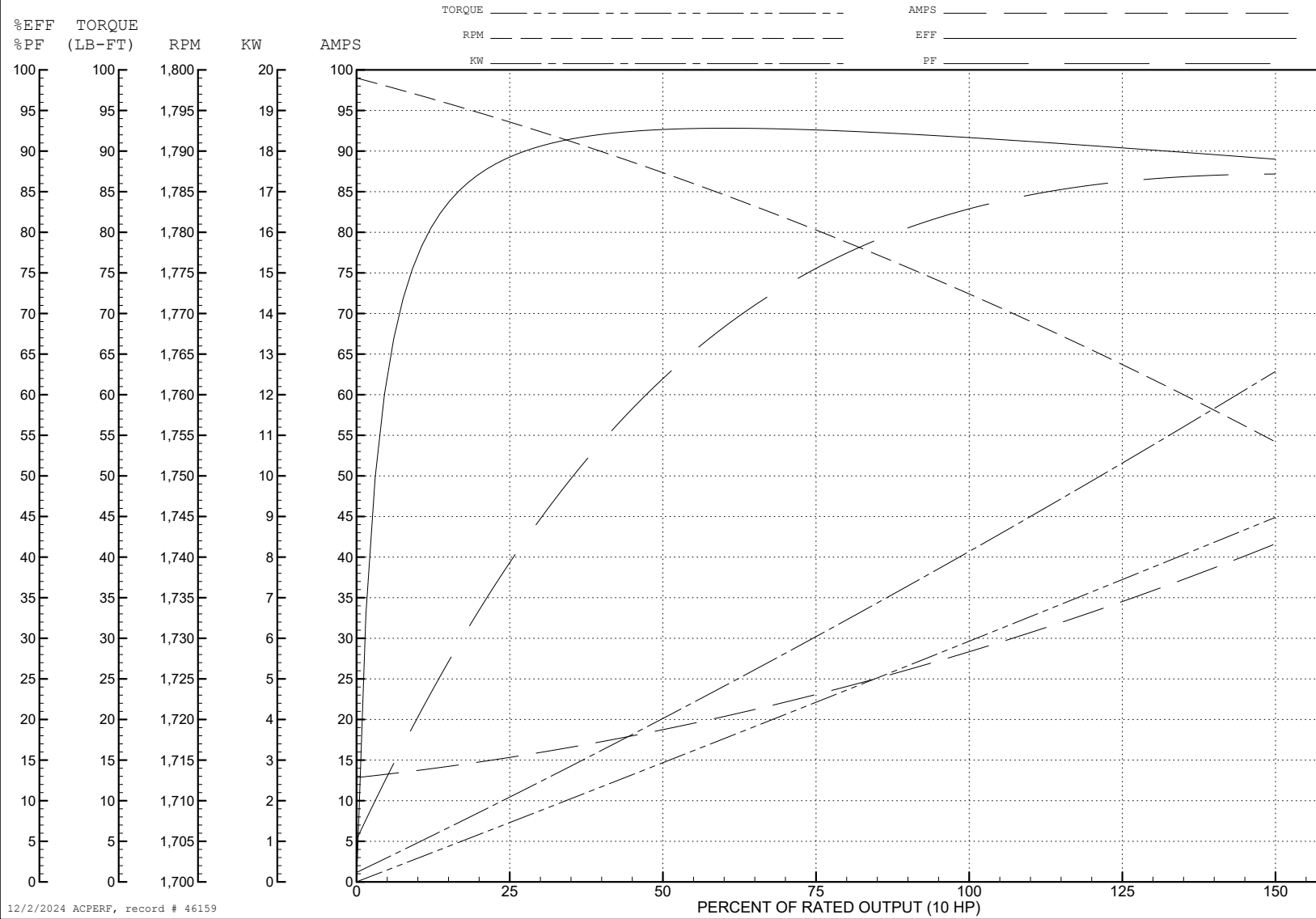
ABB Motors and Mechanical Inc.

WINDING # 37WGR082

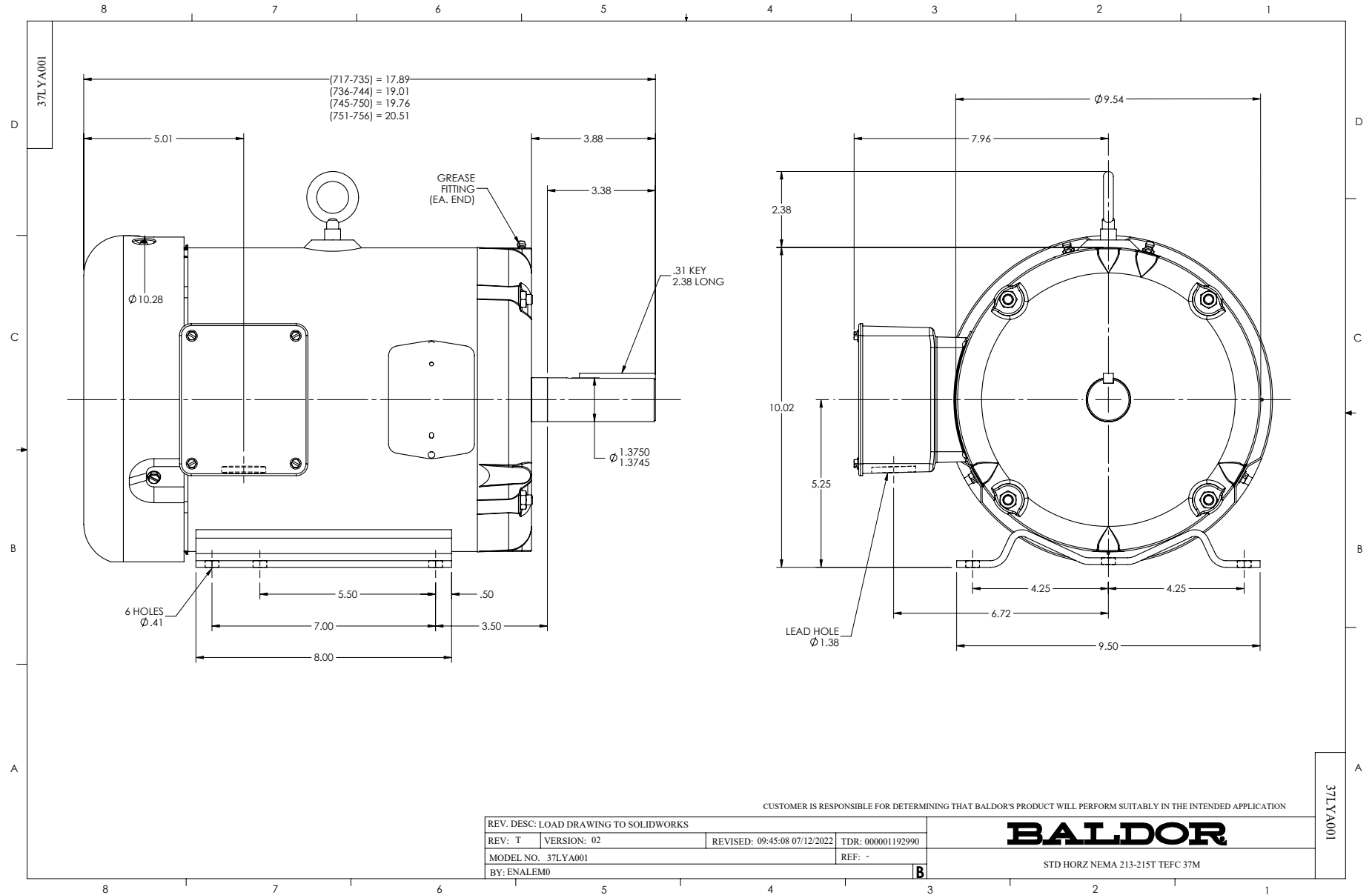
Typical performance - not guaranteed values.

10 HP 3 PH 60 HZ 1770 RPM 200 V 3752M

TORQUES (LB-FT): PO=138 PU=50.8 LR=70.9 LRA=245



12/2/2024 ACPERF, record # 46159



CD0006



NOTES:

1. THREE LEAD MOTOR MAY BE EITHER WYE CONNECTED OR DELTA CONNECTED.
2. INTERCHANGE ANY TWO LINE LEADS TO REVERSE ROTATION.
3. OPTIONAL THERMOSTATS ARE PROVIDED WHEN SPECIFIED.
4. ACTUAL NUMBER OF INTERNAL PARALLEL CIRCUITS MAY VARY.
5. LEAD COLORS ARE OPTIONAL. LEADS MUST BE NUMBERED AS SHOWN.

CD0006

REV. DESC: ADD CLASS CONN00000007		
REV. LTR: E	VERSION: 01	TDR: 000001099922
FILE: \AAA\00005\141	REVISED: 10:24:49 02/19/2019	BY: ENBRIRO
MTL: -	© □	

BALDOR - RELIANCE®

3PH, SV, 3 LEADS, WYE OR DELTA CONNECTED

SH 1 of 1