

**BALDOR • RELIANCE**

---

# Customer information packet

## EM3714T-58

10HP, 1460RPM, 3PH, 50HZ, 215T, 3752M, TEFC, F1

Class - None

Division - Not Applicable

## Specifications

Enclosure	TEFC
Frame	215T
Frame Material	Steel
Frequency	50.00 Hz
Haz Area Class and Group	None
Haz Area Division	Not Applicable
Motor Letter Type	Three Phase
Output @ Frequency	10.000 HP @ 50 HZ
Phase	3
Synchronous Speed @ Frequency	1500 RPM @ 50 HZ
Voltage @ Frequency	400.0 V @ 50 HZ
Agency Approvals	C UR US CE CSA EEV CURUS IE3 NEMA_PREMIUM UKCA UR WEEE
Ambient Temperature	40 °C
Auxillary Box	No Auxillary Box
Auxillary Box Lead Termination	None
Base Indicator	Rigid
Bearing Grease Type	Polyrex EM (-20F +300F)
Blower	None
Current @ Voltage	14.300 A @ 400.0 V
Design Code	B
Drip Cover	No Drip Cover
Duty Rating	CONT
Efficiency @ 100% Load	90.4 %
Electrically Isolated Bearing	Not Electrically Isolated

## Part detail

Revision	R
Type	AC
Mech. spec.	37A001
Base	
Status	PRD/A
Elec. spec.	37WGR070
Layout	37LYA001
Eff. date	05-01-2024
CD Diagram	CD0382
Poles	04
Leads	6#14
Proprietary	False
Created date	12-30-2014

Feedback Device	NO FEEDBACK
Front Face Code	Standard
Front Shaft Indicator	None
Heater Indicator	No Heater
High Voltage Full Load Amps	14.3 a
Insulation Class	F
Inverter Code	Not Inverter
KVA Code	J
Lifting Lugs	Standard Lifting Lugs
Locked Bearing Indicator	No Locked Bearing
Motor Lead Exit	Ko Box
Motor Lead Quantity/Wire Size	6 @ 14 AWG
Motor Lead Termination	Flying Leads
Motor Standards	NEMA
Motor Type	3752M
Mounting Arrangement	F1
Number of Poles	4
Overall Length	20.51 IN
Power Factor	84
Product Family	General Purpose
Pulley End Bearing Type	Ball
Pulley Face Code	Standard
Pulley Shaft Indicator	Standard
Rodent Screen	None
RoHS Status	ROHS COMPLIANT
Service Factor	1.15
Shaft Diameter	1.375 IN
Shaft Extension Location	Pulley End
Shaft Ground Indicator	No Shaft Grounding
Shaft Rotation	Reversible
Shaft Slinger Indicator	No Slinger
Speed	1460 rpm
Speed Code	Single Speed
Starting Method	Wye Start - Delta Run

<b>Thermal Device - Bearing</b>	None
<b>Thermal Device - Winding</b>	None
<b>Vibration Sensor Indicator</b>	No Vibration Sensor
<b>Winding Thermal 1</b>	None
<b>Winding Thermal 2</b>	None

**Nameplate**

<b>NP2716L</b>									
<b>CAT NO</b>	EM3714T-58								
<b>SPEC.</b>	37A001R070G1								
<b>HP</b>	10/7.5KW				<b>PH</b>	3			
<b>VOLTS</b>	400								
<b>AMP</b>	14.3								
<b>R.P.M. (1/MIN)</b>	1460								
<b>FRAME</b>	215T		<b>HZ</b>	50		<b>I.P.</b>	44		
<b>SER.F.</b>	1.15	<b>CODE</b>	J	<b>DES</b>	B	<b>CL</b>	F		
<b>NOM.EFF.</b>	90.4		<b>% (100%)</b>						
<b>PF</b>	84								
<b>RATING</b>	40C AMB-S1 CONT				<b>CC</b>				
<b>DE BRG</b>	6307		<b>ODE</b>	6206					
<b>ENCL</b>	TEFC	<b>SN</b>							
<b>BLANK</b>	IC411 75KG								
	IE3-91.6(75%)92.0(50%)								

**AC Induction Motor Performance Data**

Record # 48454

Typical performance - not guaranteed values

<b>Winding:</b> 37WGR070-R002		<b>Type:</b> 3752M		<b>Enclosure:</b> TEFC	
<b>Nameplate Data</b>			<b>400 V, 50 Hz: Single Voltage Motor</b>		
<b>Rated Output (HP)</b>	10	<b>Full Load Torque</b>	36.1 LB-FT		
<b>Volts</b>	400	<b>Start Configuration</b>	direct on line		
<b>Full Load Amps</b>	14.3	<b>Breakdown Torque</b>	128 LB-FT		
<b>R.P.M.</b>	1460	<b>Pull-up Torque</b>	42.5 LB-FT		
<b>Hz</b>	50 <b>Phase</b>	3	<b>Locked-rotor Torque</b>	61 LB-FT	
<b>NEMA Design Code</b>	B <b>KVA Code</b>	J	<b>Starting Current</b>	108 A	
<b>Service Factor (S.F.)</b>	1.15	<b>No-load Current</b>	5.38 A		
<b>NEMA Nom. Eff.</b>	90.4 <b>Power Factor</b>	84	<b>Line-line Res. @ 25°C</b>	1 Ω	
<b>Rating - Duty</b>	40C AMB-CONT		<b>Temp. Rise @ Rated Load</b>	78°C	
<b>S.F. Amps</b>			<b>Temp. Rise @ S.F. Load</b>	99°C	
			<b>Locked-rotor Power Factor</b>	39.6	
			<b>Rotor inertia</b>	1.28 LB-FT <sup>2</sup>	

**Load Characteristics 400 V, 50 Hz, 10 HP**

<b>% of Rated Load</b>	<b>25</b>	<b>50</b>	<b>75</b>	<b>100</b>	<b>125</b>	<b>150</b>	<b>S.F.</b>
<b>Power Factor</b>	48	71	80	84	85	85	85
<b>Efficiency</b>	89.5	92	91.6	90.4	88.8	86.4	89.4
<b>Speed</b>	1492	1483	1473	1461	1449	1433	1454
<b>Line amperes</b>	6.3	8.33	11.1	14.3	17.7	22.1	16.3

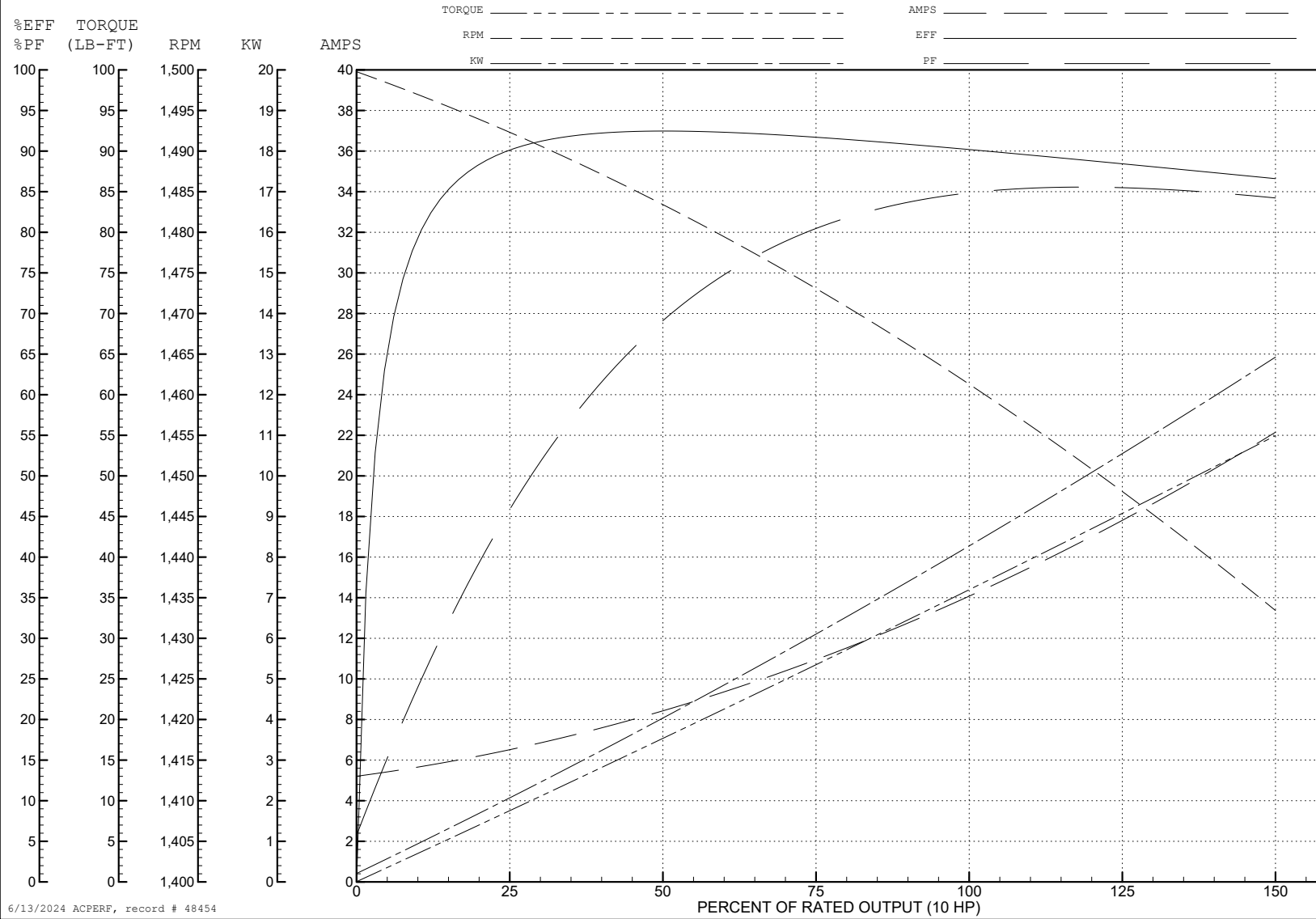
ABB Motors and Mechanical Inc.

WINDING # 37WGR070

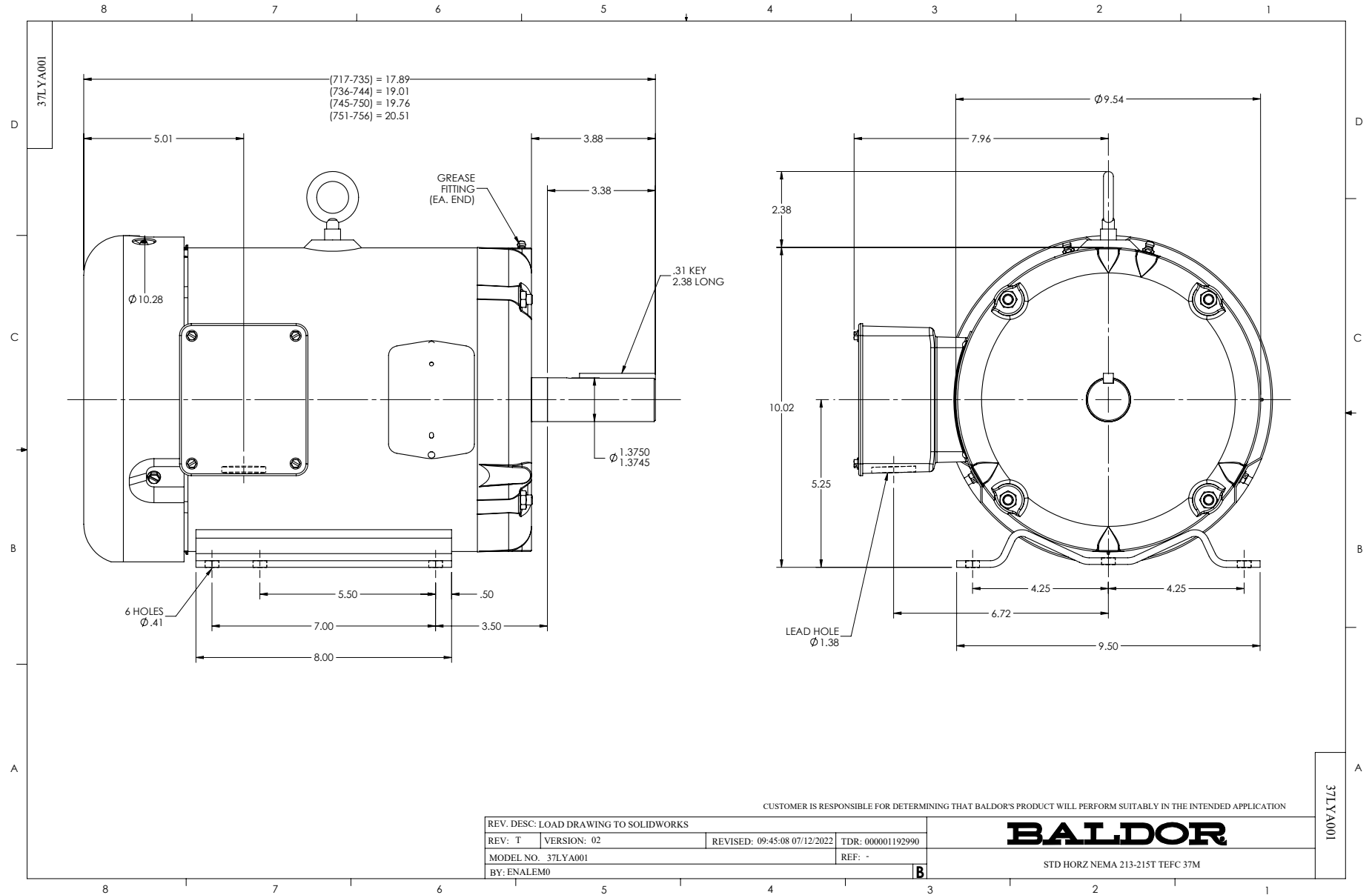
Typical performance - not guaranteed values.

10 HP 3 PH 50 HZ 1460 RPM 400 V 3752M

TORQUES (LB-FT): PO=128 PU=42.5 LR=61 LRA=108

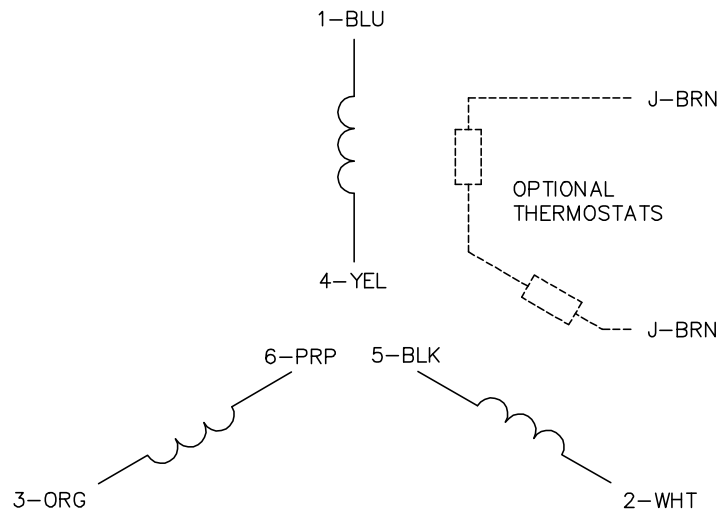


6/13/2024 ACPERF, record # 48454

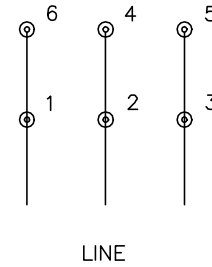




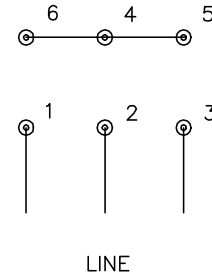
CD0382



RUN CONNECTION (1D)



START CONNECTION (1Y)



NOTES:

1. INTERCHANGE ANY TWO LINE LEADS TO REVERSE ROTATION.
2. OPTIONAL THERMOSTATS ARE PROVIDED WHEN SPECIFIED.
3. ACTUAL NUMBER OF INTERNAL PARALLEL CIRCUITS MAY BE A MULTIPLE OF THOSE SHOWN ABOVE.
4. LEAD COLORS ARE OPTIONAL. LEADS MUST ALWAYS BE NUMBERED AS SHOWN.
5. FOR ACROSS-THE-LINE STARTING, USE 'RUN' CONNECTION.

CD0382

REV. DESC: ADD CLASS CONN00000007		
REV. LTR: F	VERSION: 01	TDR: 000001099922
FILE: \AAA\00005\243	REVISED: 09:05:32 02/19/2019	BY: ENBRIRO
MTL: -	© □	

**BALDOR - RELIANCE®**

3PH, SV, 6 LEADS, Y START/D RUN

SH 1 of 1