

**BALDOR • RELIANCE**

---

# Customer information packet

## EM3711T-G

10HP, 3490RPM, 3PH, 60HZ, 215T, 3728M, TEFC, F1

Class - None

Division - Not Applicable

## Specifications

Enclosure	TEFC
Frame	215T
Frame Material	Steel
Frequency	60.00 Hz
Haz Area Class and Group	None
Haz Area Division	Not Applicable
Motor Letter Type	Three Phase
Output @ Frequency	10.000 HP @ 60 HZ
Phase	3
Synchronous Speed @ Frequency	3600 RPM @ 60 HZ
Voltage @ Frequency	460.0 V @ 60 HZ 230.0 V @ 60 HZ
Agency Approvals	CSA CSA EEV UR
Ambient Temperature	40 °C
Auxillary Box	No Auxillary Box
Auxillary Box Lead Termination	None
Base Indicator	Rigid
Bearing Grease Type	Polyrex EM (-20F +300F)
Blower	None
Current @ Voltage	23.600 A @ 230.0 V 24.900 A @ 208.0 V 11.800 A @ 460.0 V
Design Code	B
Drip Cover	No Drip Cover
Duty Rating	CONT
Efficiency @ 100% Load	90.2 %
Electrically Isolated Bearing	Not Electrically Isolated
Feedback Device	NO FEEDBACK
Front Face Code	Standard
Front Shaft Indicator	None

## Part detail

Revision	Y
Type	AC
Mech. spec.	37J838
Base	
Status	PRD/A
Elec. spec.	37WGS864
Layout	37LYJ838
Eff. date	09-23-2024
CD Diagram	CD0005
Poles	02
Leads	9#14
Proprietary	False
Created date	11-29-2011

Heater Indicator	No Heater
High Voltage Full Load Amps	11.8 a
Insulation Class	H
Inverter Code	Inverter Ready
KVA Code	G
Lifting Lugs	Standard Lifting Lugs
Locked Bearing Indicator	Locked Bearing
Motor Lead Exit	Ko Box
Motor Lead Quantity/Wire Size	9 @ 14 AWG
Motor Lead Termination	Flying Leads
Motor Standards	NEMA
Motor Type	3728M
Mounting Arrangement	F1
Number of Poles	2
Overall Length	17.89 IN
Power Factor	87
Product Family	General Purpose
Pulley End Bearing Type	Ball
Pulley Face Code	Standard
Pulley Shaft Indicator	Standard
Rodent Screen	None
RoHS Status	ROHS COMPLIANT
Service Factor	1.15
Shaft Diameter	1.375 IN
Shaft Extension Location	Pulley End
Shaft Ground Indicator	Shaft Grounding
Shaft Rotation	Reversible
Shaft Slinger Indicator	No Slinger
Speed	3490 rpm
Speed Code	Single Speed
Starting Method	Direct on line
Thermal Device - Bearing	None
Thermal Device - Winding	None
Vibration Sensor Indicator	No Vibration Sensor

<b>Winding Thermal 1</b>	<b>None</b>
<b>Winding Thermal 2</b>	<b>None</b>

**Nameplate**

**NP3441LUA**

<b>CAT.NO.</b>	EM3711T-G						
<b>SPEC</b>	37J838S864G1						
<b>HP</b>	10						
<b>VOLTS</b>	230/460						
<b>AMPS</b>	23.2/11.6						
<b>RPM</b>	3490						
<b>FRAME</b>	215T		<b>HZ</b>	60		<b>PH</b>	3
<b>SF</b>	1.15	<b>CODE</b>	G	<b>DES</b>	B	<b>CLASS</b>	H
<b>NEMA NOM. EFF</b>	90.2	<b>PF</b>	88				
<b>RATING</b>	40C AMB-CONT						
<b>CC</b>	010A						
<b>ENCL</b>	TEFC	<b>SER</b>					
<b>DE</b>	6307	<b>ODE</b>	6206				
<b>VPWM INVERTER READY</b>							
<b>CT6-60H(10:1)VT3-60H(20:1</b>							
	50Hz 10HP 190/380V 28.2/14.1A						SF1.0

**AC Induction Motor Performance Data**

Record # 53400

Typical performance - not guaranteed values

Winding: 37WGS864-R029		Type: 3730M	Enclosure: TEFC		
<b>Nameplate Data</b>			<b>460 V, 60 Hz: High Voltage Connection</b>		
Rated Output (HP)	10	Full Load Torque	15 LB-FT		
Volts	230/460	Start Configuration	direct on line		
Full Load Amps	23.2/11.6	Breakdown Torque	44.8 LB-FT		
R.P.M.	3490	Pull-up Torque	21.9 LB-FT		
Hz	60 Phase	3	Locked-rotor Torque	20.5 LB-FT	
NEMA Design Code	B	KVA Code	G	Starting Current	68.9 A
Service Factor (S.F.)	1.15	No-load Current	4.68 A		
NEMA Nom. Eff.	90.2	Power Factor	88	Line-line Res. @ 25°C	1.05 Ω
Rating - Duty	40C	AMB-CONT	Temp. Rise @ Rated Load	79°C	
S.F. Amps			Temp. Rise @ S.F. Load	98°C	
			Locked-rotor Power Factor	33.7	
			Rotor inertia	0.273 LB-FT <sup>2</sup>	

**Load Characteristics 460 V, 60 Hz, 10 HP**

% of Rated Load	25	50	75	100	125	150	S.F.
Power Factor	54	74	83	87	88	89	88
Efficiency	77.2	85.2	87.6	88.3	88.2	87.6	90
Speed	3577	3557	3536	3514	3490	3463	3464
Line amperes	5.61	7.42	9.69	12.2	15	18	13.5

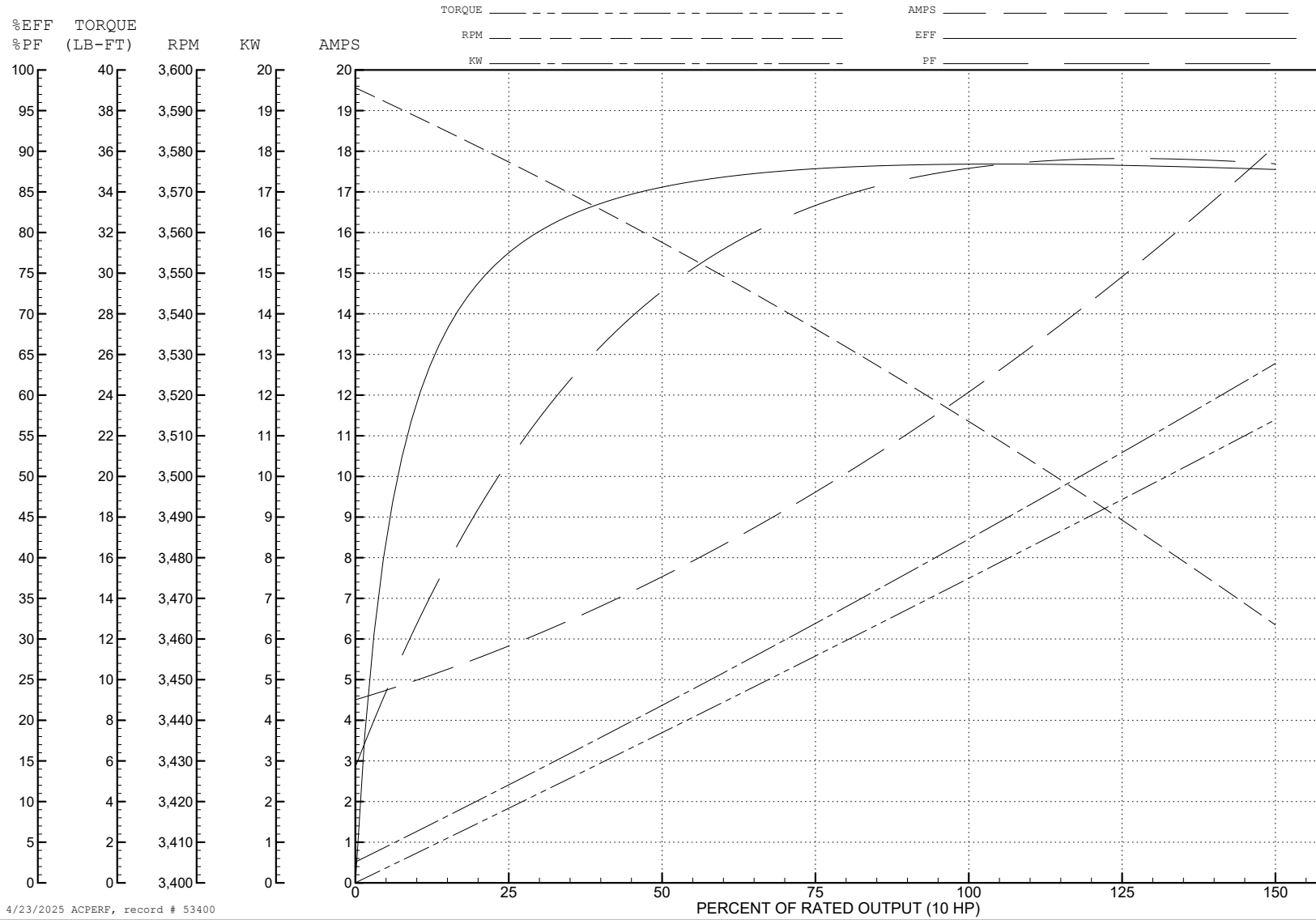
ABB Motors and Mechanical Inc.

WINDING # 37WGS864

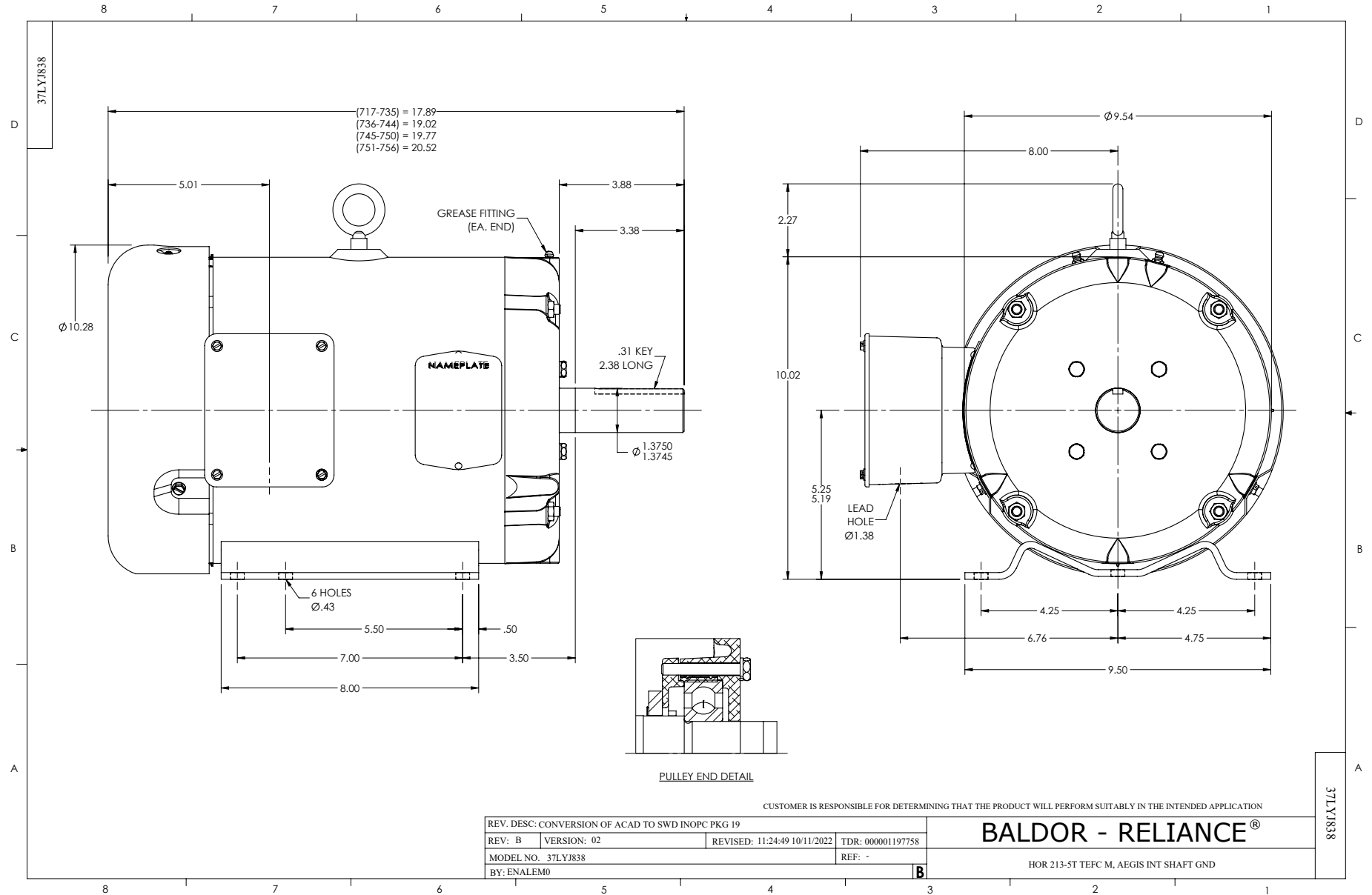
Typical performance - not guaranteed values.

10 HP 3 PH 60 HZ 3490 RPM 460 V 3730M

TORQUES (LB-FT): PO=44.8 PU=21.9 LR=20.5 LRA=68.9



4/23/2025 ACPERF, record # 53400

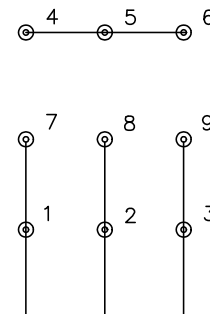




CD0005

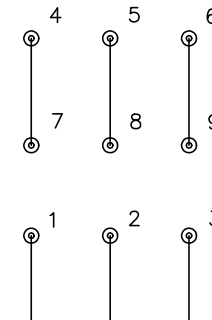


LOW VOLTAGE  
(2Y)



LINE

HIGH VOLTAGE  
(1Y)



LINE

NOTES:

1. INTERCHANGE ANY TWO LINE LEADS TO REVERSE ROTATION.
2. OPTIONAL THERMOSTATS ARE PROVIDED WHEN SPECIFIED.
3. ACTUAL NUMBER OF INTERNAL PARALLEL CIRCUITS MAY BE A MULTIPLE OF THOSE SHOWN ABOVE.
4. LEAD COLORS ARE OPTIONAL. LEADS MUST ALWAYS BE NUMBERED AS SHOWN.

REV. DESC: REVISE TO SHOW OPTIONAL COLORS			
REV. LTR: E	BY: JLP	REVISED: 01/19/99 10:15	TDR: 0171435
S00000		FILE: AAA00005140	MDL: -
		MTL: -	

**BALDOR ELECTRIC Co.**

3PH, DV, 9 LEADS

CD0005