



Customer information packet

EM3708T-BG

5HP, 1165RPM, 3PH, 60HZ, 215T, 3752M, TEFC, F1

Class - None

Division - Not Applicable

Specifications

Enclosure	TEFC
Frame	215T
Frame Material	Steel
Frequency	60.00 Hz
Motor Letter Type	Three Phase
Output @ Frequency	5.000 HP @ 60 HZ
Phase	3
Synchronous Speed @ Frequency	1200 RPM @ 60 HZ
Voltage @ Frequency	230.0 V @ 60 HZ 460.0 V @ 60 HZ
XP Class and Group	None
XP Division	Not Applicable
Ambient Temperature	40 °C
Auxillary Box	No Auxillary Box
Auxillary Box Lead Termination	None
Base Indicator	Rigid
Bearing Grease Type	Polyrex EM (-20F +300F)
Blower	None
Current @ Voltage	14.400 A @ 230.0 V 15.600 A @ 208.0 V 7.200 A @ 460.0 V
Design Code	A
Drip Cover	No Drip Cover
Duty Rating	CONT
Efficiency @ 100% Load	89.5 %
Electrically Isolated Bearing	Not Electrically Isolated
Feedback Device	NO FEEDBACK
Front Face Code	Standard
Front Shaft Indicator	None
Heater Indicator	No Heater
High Voltage Full Load Amps	7.2 a
Insulation Class	H

Part detail

Revision	E
Type	AC
Mech. spec.	37N339
Base	
Status	PRD/A
Elec. spec.	37WGQ067
Layout	37LYN339
Eff. date	12-28-2021
CD Diagram	CD0005
Poles	06
Leads	9#14
Proprietary	False
Created date	09-21-2017

Inverter Code	Inverter Ready
KVA Code	K
Lifting Lugs	Standard Lifting Lugs
Locked Bearing Indicator	Locked Bearing
Motor Lead Exit	Ko Box
Motor Lead Quantity/Wire Size	9 @ 14 AWG
Motor Lead Termination	Flying Leads
Motor Standards	NEMA
Motor Type	3752M
Mounting Arrangement	F1
Number of Poles	6
Overall Length	20.51 IN
Power Factor	71
Product Family	General Purpose
Pulley End Bearing Type	Ball
Pulley Face Code	Standard
Pulley Shaft Indicator	Standard
Rodent Screen	None
Service Factor	1.15
Shaft Diameter	1.375 IN
Shaft Extension Location	Pulley End
Shaft Ground Indicator	Shaft Grounding
Shaft Rotation	Reversible
Shaft Slinger Indicator	No Slinger
Speed	1165 rpm
Speed Code	Single Speed
Starting Method	Direct on line
Thermal Device - Bearing	None
Thermal Device - Winding	None
Vibration Sensor Indicator	No Vibration Sensor
Winding Thermal 1	None
Winding Thermal 2	None

Nameplate

NP3441LUA

CAT.NO.	EM3708T-BG						
SPEC	37N339Q067G1						
HP	5						
VOLTS	230/460						
AMPS	14.4/7.2						
RPM	1165						
FRAME	215T		HZ	60		PH	3
SF	1.15	CODE	K	DES	A	CLASS	H
NEMA NOM. EFF	89.5	PF	71				
RATING	40C AMB-CONT						
CC	010A	USABLE AT 208V				15.6	
ENCL	TEFC	SER					
DE	6307	ODE	6206				
VPWM INVERTER READY	SFA 16.6/8.3						
CT6-60H(10:1)VT3-60H(20:1)	50Hz 5HP 190/380V 17.4/8.7A						SF1.0

AC Induction Motor Performance Data

Record # 87458

Typical performance - not guaranteed values

Winding: 37WGQ067-R002		Type: 3752M	Enclosure: TEFC	
Nameplate Data			460 V, 60 Hz: High Voltage Connection	
Rated Output (HP)	5	Full Load Torque	22.48 LB-FT	
Volts	230/460	Start Configuration	direct on line	
Full Load Amps	14.4/7.2	Breakdown Torque	80.1 LB-FT	
R.P.M.	1165	Pull-up Torque	51.2 LB-FT	
Hz	60 Phase	Locked-rotor Torque	55.8 LB-FT	
NEMA Design Code	A KVA Code	Starting Current	54.4 A	
Service Factor (S.F.)	1.15	No-load Current	3.98 A	
NEMA Nom. Eff.	89.5 Power Factor	Line-line Res. @ 25°C	1.65 Ω	
Rating - Duty	40C AMB-CONT	Temp. Rise @ Rated Load	59°C	
S.F. Amps		Temp. Rise @ S.F. Load	72°C	
		Locked-rotor Power Factor	21.9	
		Rotor inertia	1.29 lb-ft ²	

Load Characteristics 460 V, 60 Hz, 5 HP

% of Rated Load	25	50	75	100	125	150	S.F.
Power Factor	33	52	64	70	74	76	72
Efficiency	84.4	89.3	90.2	89.7	88.6	87	89
Speed	1192	1183	1175	1165	1154	1141	1158
Line amperes	4.28	5.07	6.08	7.39	8.87	10.6	8.28

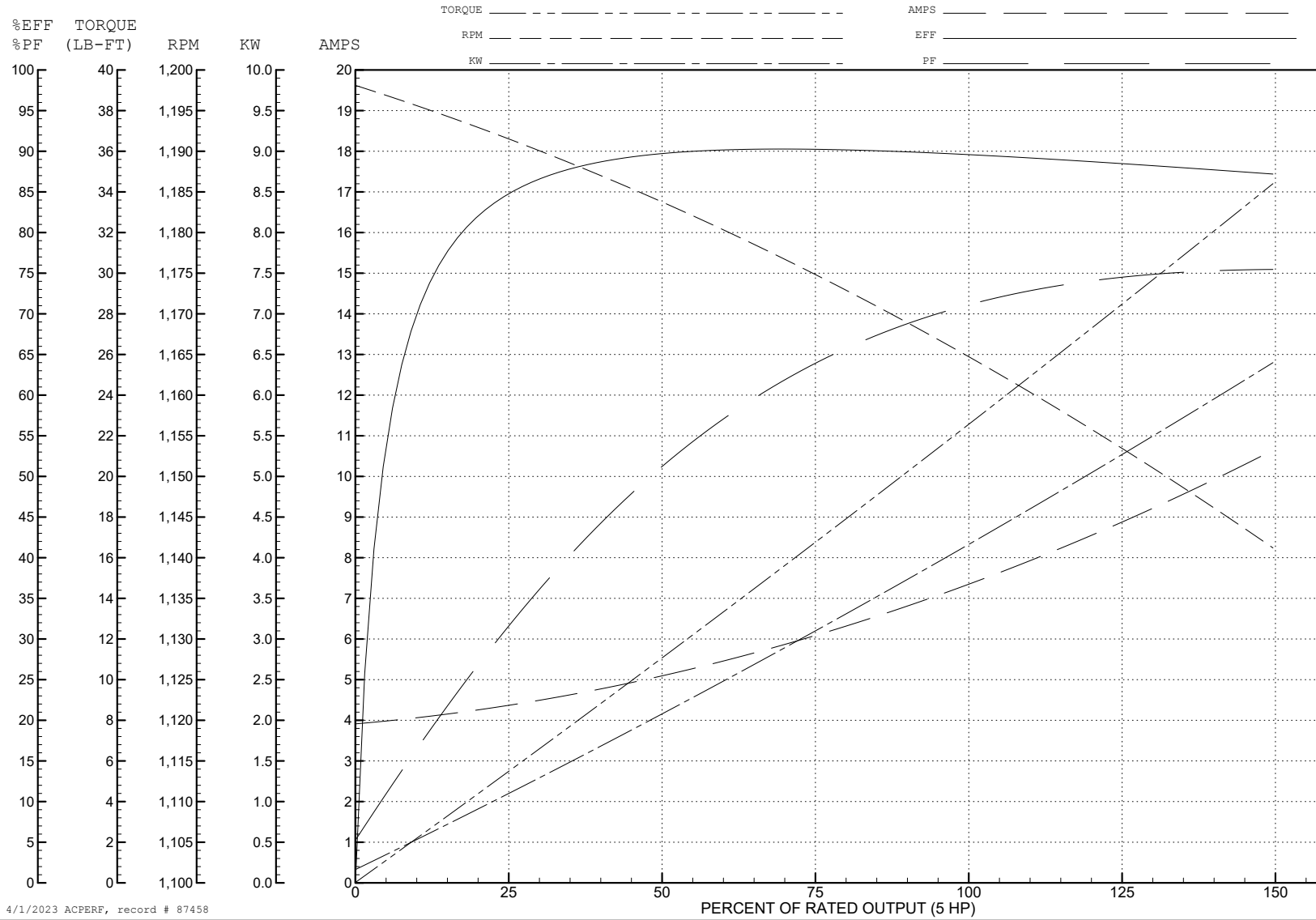
ABB Motors and Mechanical Inc.

WINDING # 37WGQ067

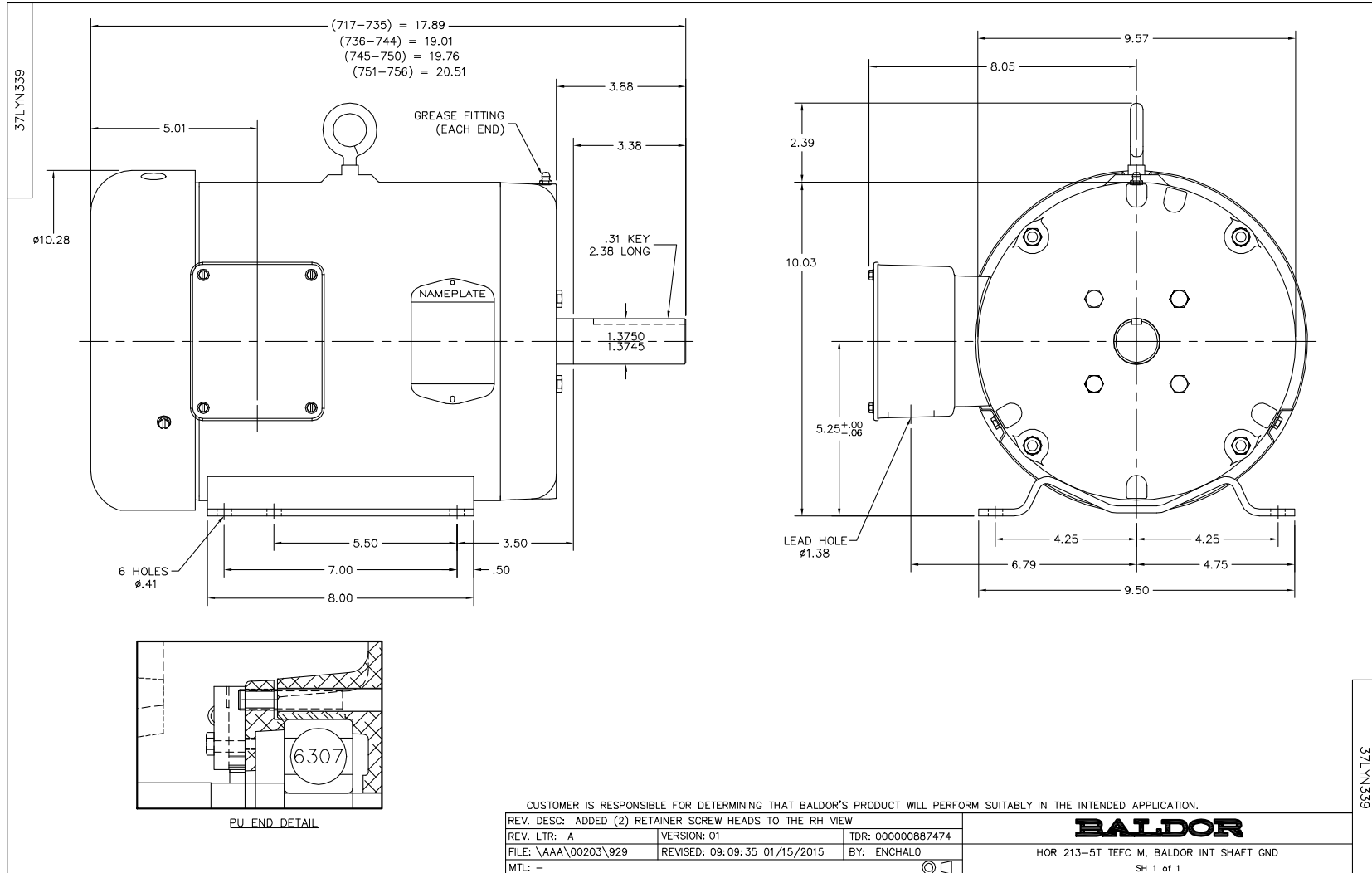
Typical performance - not guaranteed values.

5 HP 3 PH 60 HZ 1165 RPM 460 V 3752M

TORQUES (LB-FT): PO=80.1 PU=51.2 LR=55.8 LRA=54.4



4/1/2023 ACPERF, record # 87458



CD0005

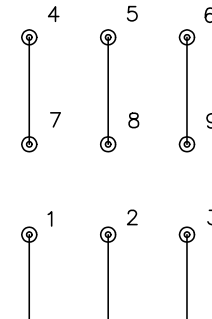


LOW VOLTAGE
(2Y)



LINE

HIGH VOLTAGE
(1Y)



LINE

NOTES:

1. INTERCHANGE ANY TWO LINE LEADS TO REVERSE ROTATION.
2. OPTIONAL THERMOSTATS ARE PROVIDED WHEN SPECIFIED.
3. ACTUAL NUMBER OF INTERNAL PARALLEL CIRCUITS MAY BE A MULTIPLE OF THOSE SHOWN ABOVE.
4. LEAD COLORS ARE OPTIONAL. LEADS MUST ALWAYS BE NUMBERED AS SHOWN.

CD0005

REV. DESC: REVISE TO SHOW OPTIONAL COLORS			
REV. LTR: E	BY: JLP	REVISED: 01/19/99 10:15	TDR: 0171435
S00000		FILE: AAA00005140	MDL: -
		MTL: -	

BALDOR ELECTRIC Co.

3PH, DV, 9 LEADS