



Customer information packet

EM3702T

2HP, 865RPM, 3PH, 60HZ, 213T, 3732M, TEFC, F1, N

Class - None

Division - Not Applicable

Specifications

Enclosure	TEFC
Frame	213T
Frame Material	Steel
Frequency	60.00 Hz
Haz Area Class and Group	None
Haz Area Division	Not Applicable
Motor Letter Type	Three Phase
Output @ Frequency	2.000 HP @ 60 HZ
Phase	3
Synchronous Speed @ Frequency	900 RPM @ 60 HZ
Voltage @ Frequency	230.0 V @ 60 HZ 460.0 V @ 60 HZ
Agency Approvals	UR CSA
Ambient Temperature	40 °C
Auxillary Box	No Auxillary Box
Auxillary Box Lead Termination	None
Base Indicator	Rigid
Bearing Grease Type	Polyrex EM (-20F +300F)
Blower	None
Current @ Voltage	3.500 A @ 460.0 V 7.000 A @ 230.0 V 7.200 A @ 208.0 V
Design Code	B
Drip Cover	No Drip Cover
Duty Rating	CONT
Efficiency @ 100% Load	84.0 %
Electrically Isolated Bearing	Not Electrically Isolated
Feedback Device	NO FEEDBACK
Front Face Code	Standard
Front Shaft Indicator	None
Heater Indicator	No Heater

Part detail

Revision	H
Type	AC
Mech. spec.	37G813
Base	
Status	PRD/A
Elec. spec.	37WGS277
Layout	37LYG813
Eff. date	05-13-2024
CD Diagram	CD0005
Poles	08
Leads	9#14
Proprietary	False
Created date	04-07-2015

High Voltage Full Load Amps	3.5 a
Insulation Class	F
Inverter Code	Not Inverter
IP Rating	NONE
KVA Code	H
Lifting Lugs	Standard Lifting Lugs
Locked Bearing Indicator	No Locked Bearing
Motor Lead Exit	Ko Box
Motor Lead Quantity/Wire Size	9 @ 14 AWG
Motor Lead Termination	Flying Leads
Motor Standards	NEMA
Motor Type	3732M
Mounting Arrangement	F1
Number of Poles	8
Overall Length	17.89 IN
Power Factor	62
Product Family	General Purpose
Pulley End Bearing Type	Ball
Pulley Face Code	Standard
Pulley Shaft Indicator	Standard
Rodent Screen	None
Service Factor	1.15
Shaft Diameter	1.375 IN
Shaft Extension Location	Pulley End
Shaft Ground Indicator	No Shaft Grounding
Shaft Rotation	Reversible
Shaft Slinger Indicator	No Slinger
Speed	865 rpm
Speed Code	Single Speed
Starting Method	Direct on line
Thermal Device - Bearing	None
Thermal Device - Winding	None
Vibration Sensor Indicator	No Vibration Sensor
Winding Thermal 1	None

Winding Thermal 2

None

Nameplate

NP2116L									
CAT.NO.	EM3702T								
SPEC.	37G813S277G1								
HP	2								
VOLTS	230/460								
AMP	7/3.5								
RPM	865								
FRAME	213T		HZ	60		PH	3		
SER.F.	1.15	CODE	H	DES	B	CL	F		
NEMA-NOM-EFF	84	PF	62						
RATING	40C AMB-CONT								
CC	010A								
DE	6307	ODE	6206						
ENCL	TEFC	SN							

AC Induction Motor Performance Data

Record # 49983

Typical performance - not guaranteed values

Winding: 37WGS277-R008		Type: 3732M		Enclosure: TEFC	
Nameplate Data			460 V, 60 Hz: High Voltage Connection		
Rated Output (HP)	2	Full Load Torque	11.9 LB-FT		
Volts	230/460	Start Configuration	direct on line		
Full Load Amps	7/3.5	Breakdown Torque	29 LB-FT		
R.P.M.	865	Pull-up Torque	16.9 LB-FT		
Hz	60	Phase	3	Locked-rotor Torque	18.2 LB-FT
NEMA Design Code	B	KVA Code	H	Starting Current	16 A
Service Factor (S.F.)	1.15	No-load Current	2.17 A		
NEMA Nom. Eff.	84	Power Factor	62	Line-line Res. @ 25°C	5.9 Ω
Rating - Duty	40C AMB-CONT		Temp. Rise @ Rated Load	36°C	
S.F. Amps			Temp. Rise @ S.F. Load	43°C	
			Locked-rotor Power Factor	34.8	
			Rotor inertia	0.796 LB-FT ²	

Load Characteristics 460 V, 60 Hz, 2 HP

% of Rated Load	25	50	75	100	125	150	S.F.
Power Factor	26	43	54	62	66	69	64
Efficiency	75.5	83.7	85.9	85	84.1	81.8	84.5
Speed	892	884	876	866	854	838	859
Line amperes	2.28	2.57	2.98	3.51	4.18	4.94	3.91

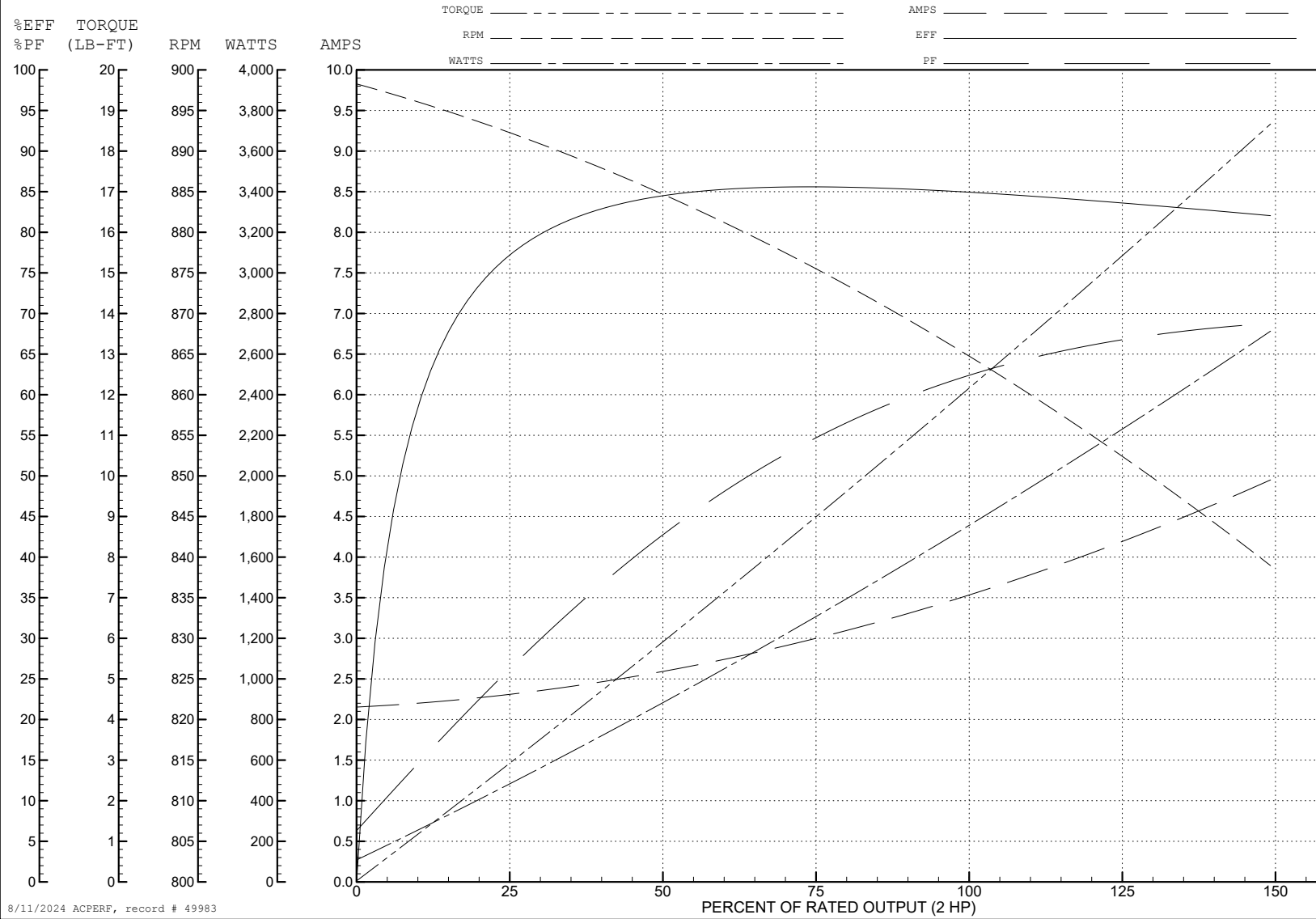
ABB Motors and Mechanical Inc.

WINDING # 37WGS277

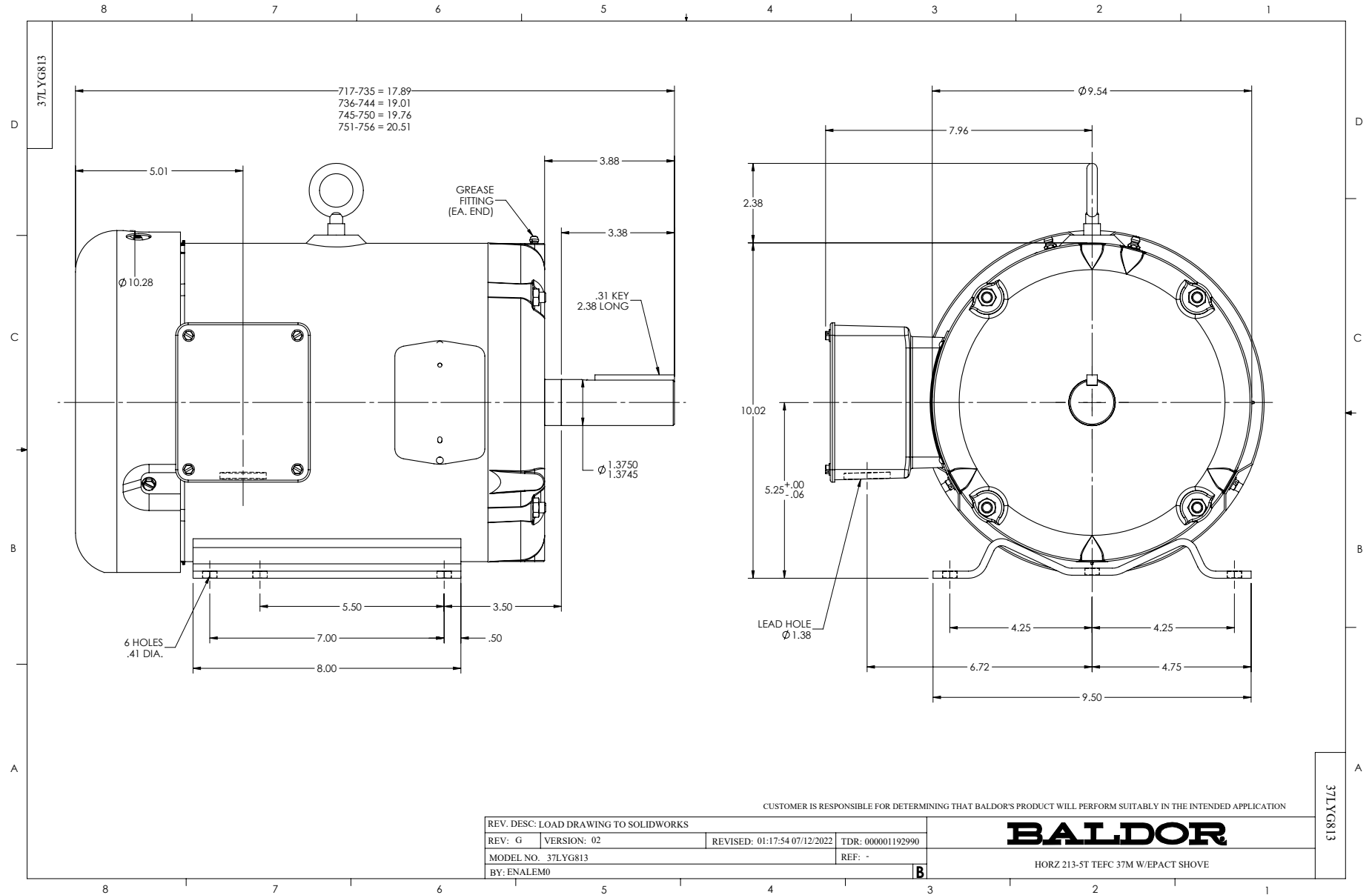
Typical performance - not guaranteed values.

2 HP 3 PH 60 HZ 865 RPM 460 V 3732M

TORQUES (LB-FT): PO=29 PU=16.9 LR=18.2 LRA=16



8/11/2024 ACPERF, record # 49983



CD0005

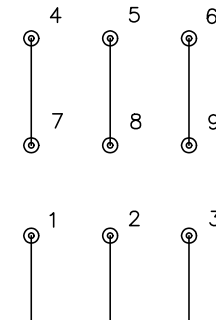


LOW VOLTAGE
(2Y)



LINE

HIGH VOLTAGE
(1Y)



LINE

NOTES:

1. INTERCHANGE ANY TWO LINE LEADS TO REVERSE ROTATION.
2. OPTIONAL THERMOSTATS ARE PROVIDED WHEN SPECIFIED.
3. ACTUAL NUMBER OF INTERNAL PARALLEL CIRCUITS MAY BE A MULTIPLE OF THOSE SHOWN ABOVE.
4. LEAD COLORS ARE OPTIONAL. LEADS MUST ALWAYS BE NUMBERED AS SHOWN.

CD0005

REV. DESC: REVISE TO SHOW OPTIONAL COLORS			
REV. LTR: E	BY: JLP	REVISED: 01/19/99 10:15	TDR: 0171435
S00000		FILE: AAA00005140	MDL: -
		MTL: -	

BALDOR ELECTRIC Co.

3PH, DV, 9 LEADS