



---

# Customer information packet

## EM3664T-G

2HP, 1165RPM, 3PH, 60HZ, 184T, TEFC, F1

Class - None

Division - Not Applicable

## Specifications

Enclosure	TEFC
Frame	184T
Frame Material	Iron
Frequency	60.00 Hz
Haz Area Class and Group	None
Haz Area Division	Not Applicable
Motor Letter Type	Three Phase
Output @ Frequency	2.000 HP @ 60 HZ
Phase	3
Synchronous Speed @ Frequency	1200 RPM @ 60 HZ
Voltage @ Frequency	460.0 V @ 60 HZ 230.0 V @ 60 HZ
Agency Approvals	CSA CSA EEV NEMA PREMIUM UR
Ambient Temperature	40 °C
Auxillary Box	No Auxillary Box
Auxillary Box Lead Termination	None
Base Indicator	Rigid
Bearing Grease Type	Polyrex EM (-20F +300F)
Blower	None
Current @ Voltage	6.600 A @ 208.0 V 6.300 A @ 230.0 V 3.150 A @ 460.0 V
Design Code	B
Drip Cover	No Drip Cover
Duty Rating	CONT
Efficiency @ 100% Load	88.5 %
Electrically Isolated Bearing	Not Electrically Isolated
Feedback Device	NO FEEDBACK
Heater Indicator	No Heater

## Part detail

Revision	E
Type	AC
Mech. spec.	
Base	
Status	PRD/A
Elec. spec.	06WGW970
Layout	06LYG729
Eff. date	04-29-2024
CD Diagram	CD0005
Poles	06
Leads	9#16
Proprietary	False
Created date	04-09-2019

<b>High Voltage Full Load Amps</b>	3.2 a
<b>Insulation Class</b>	H
<b>Inverter Code</b>	Inverter Ready
<b>IP Rating</b>	NONE
<b>KVA Code</b>	K
<b>Lifting Lugs</b>	Standard Lifting Lugs
<b>Locked Bearing Indicator</b>	Locked Bearing
<b>Motor Lead Termination</b>	Flying Leads
<b>Motor Standards</b>	NEMA
<b>Motor Type</b>	0642M
<b>Mounting Arrangement</b>	F1
<b>Number of Poles</b>	6
<b>Overall Length</b>	15.23 IN
<b>Power Factor</b>	68
<b>Product Family</b>	General Purpose
<b>Pulley Face Code</b>	Standard
<b>Rodent Screen</b>	None
<b>Service Factor</b>	1.15
<b>Shaft Diameter</b>	1.125 IN
<b>Shaft Ground Indicator</b>	Shaft Grounding
<b>Shaft Rotation</b>	Reversible
<b>Speed</b>	1165 rpm
<b>Speed Code</b>	Single Speed
<b>Starting Method</b>	Direct on line
<b>Thermal Device - Winding</b>	None
<b>Vibration Sensor Indicator</b>	No Vibration Sensor
<b>Winding Thermal 1</b>	None
<b>Winding Thermal 2</b>	None

**Nameplate**

**NP3441LUA**

<b>CAT.NO.</b>	EM3664T-G						
<b>SPEC</b>	06-0000-0082						
<b>HP</b>	2						
<b>VOLTS</b>	230/460						
<b>AMPS</b>	6.3/3.15						
<b>RPM</b>	1165						
<b>FRAME</b>	184T		<b>HZ</b>	60		<b>PH</b>	3
<b>SF</b>	1.15	<b>CODE</b>	K	<b>DES</b>	B	<b>CLASS</b>	H
<b>NEMA NOM. EFF</b>	88.5	<b>PF</b>	68				
<b>RATING</b>	40C AMB-CONT						
<b>CC</b>	010A						
<b>ENCL</b>	TEFC	<b>SER</b>					
<b>DE</b>	6206	<b>ODE</b>	6205				
<b>VPWM INVERTER READY</b>							
<b>CT6-60H(10:1)VT3-60H(20:1</b>	50HZ 2HP 190/380V 7.4/3.7A						SF1.0

**AC Induction Motor Performance Data**

Record # 75469

Typical performance - not guaranteed values

Winding: 06WGW970-R006		Type: 0642M	Enclosure: TEFC	
<b>Nameplate Data</b>			<b>460 V, 60 Hz: High Voltage Connection</b>	
Rated Output (HP)	2	Full Load Torque	9.05 LB-FT	
Volts	230/460	Start Configuration	direct on line	
Full Load Amps	6.3/3.15	Breakdown Torque	31.2 LB-FT	
R.P.M.	1165	Pull-up Torque	16.7 LB-FT	
Hz	60 Phase	Locked-rotor Torque	19.9 LB-FT	
NEMA Design Code	B KVA Code	Starting Current	20.9 A	
Service Factor (S.F.)	1.15	No-load Current	1.84 A	
NEMA Nom. Eff.	88.5 Power Factor	Line-line Res. @ 25°C	5.12 Ω	
Rating - Duty	40C AMB-CONT	Temp. Rise @ Rated Load	27°C	
S.F. Amps		Temp. Rise @ S.F. Load	32°C	
		Locked-rotor Power Factor	28.5	
		Rotor inertia	0.395 LB-FT <sup>2</sup>	

**Load Characteristics 460 V, 60 Hz, 2 HP**

% of Rated Load	25	50	75	100	125	150	S.F.
Power Factor	31	48	60	68	73	75	71
Efficiency	79.1	86.3	88	88.6	87.3	86.3	87.8
Speed	1193	1186	1178	1170	1161	1150	1165
Line amperes	1.97	2.26	2.67	3.14	3.68	4.33	3.46

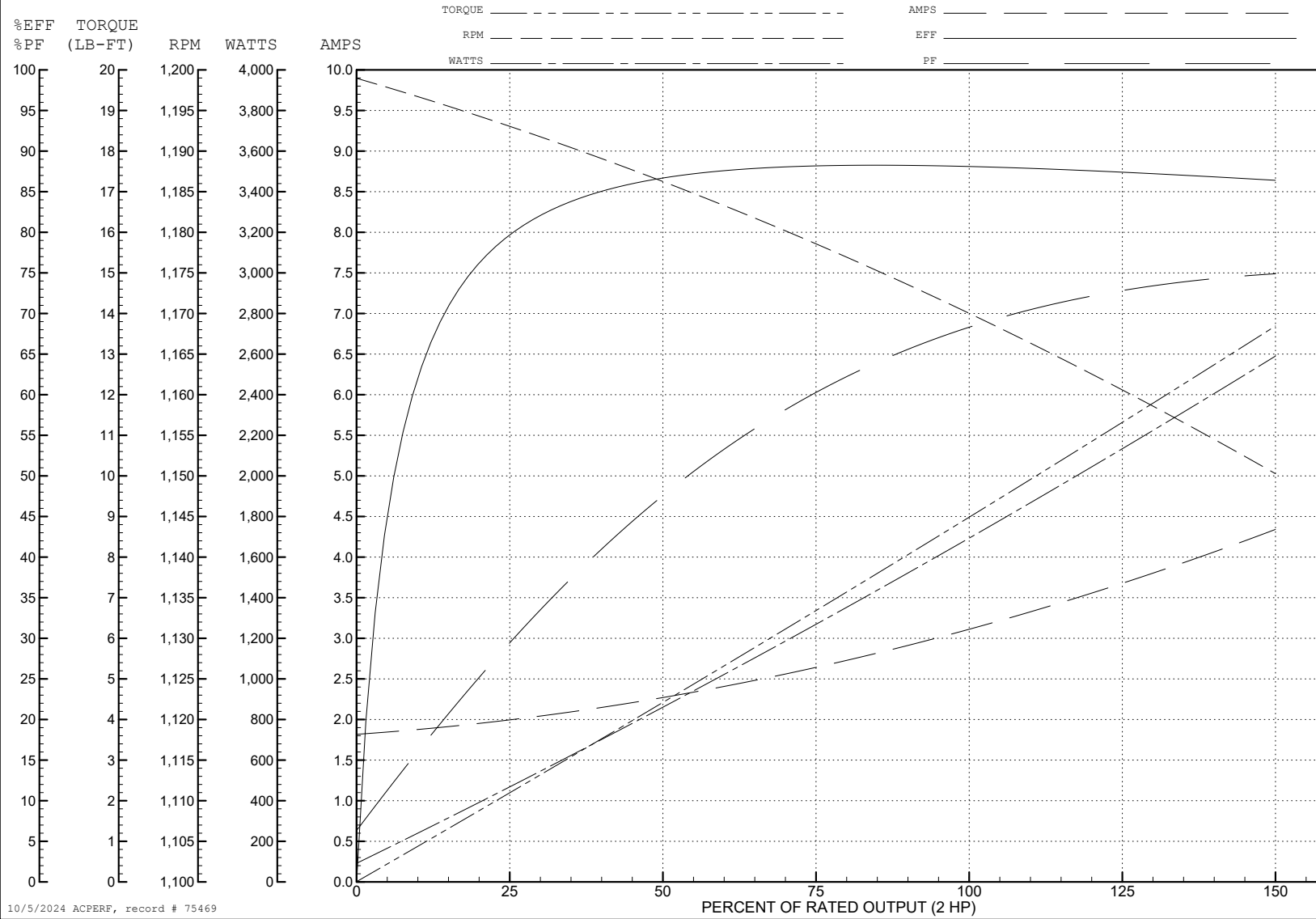
ABB Motors and Mechanical Inc.

WINDING # 06WGW970

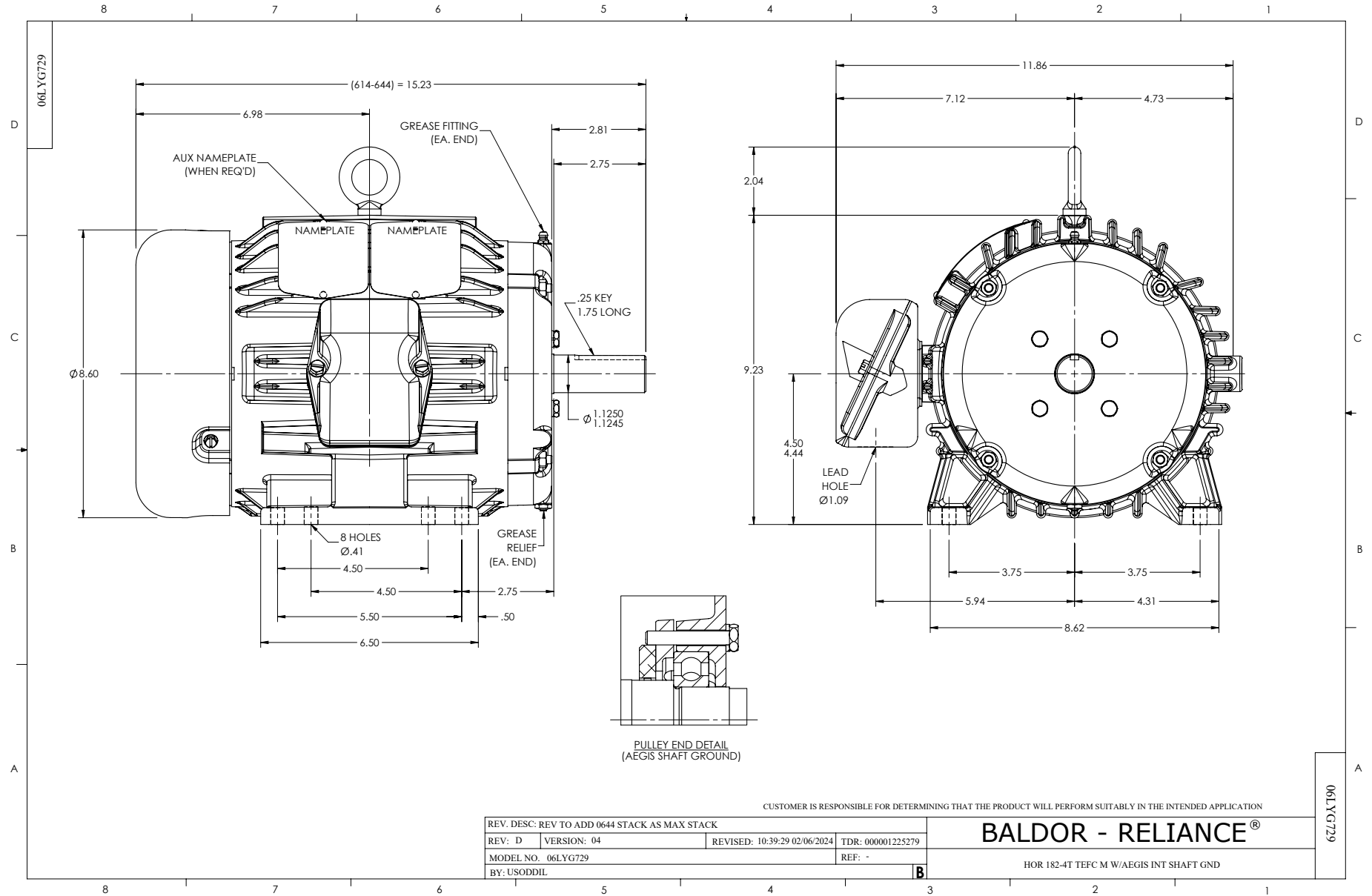
Typical performance - not guaranteed values.

2 HP 3 PH 60 HZ 1165 RPM 460 V 0642M

TORQUES (LB-FT): PO=31.2 PU=16.7 LR=19.9 LRA=20.9



10/5/2024 ACPERF, record # 75469



CD0005



LOW VOLTAGE  
(2Y)



LINE

HIGH VOLTAGE  
(1Y)



LINE

NOTES:

1. INTERCHANGE ANY TWO LINE LEADS TO REVERSE ROTATION.
2. OPTIONAL THERMOSTATS ARE PROVIDED WHEN SPECIFIED.
3. ACTUAL NUMBER OF INTERNAL PARALLEL CIRCUITS MAY BE A MULTIPLE OF THOSE SHOWN ABOVE.
4. LEAD COLORS ARE OPTIONAL. LEADS MUST ALWAYS BE NUMBERED AS SHOWN.

CD0005

REV. DESC: REVISE TO SHOW OPTIONAL COLORS			
REV. LTR: E	BY: JLP	REVISED: 01/19/99 10:15	TDR: 0171435
S00000		FILE: AAA00005140	MDL: -
		MTL: -	

**BALDOR ELECTRIC Co.**

3PH, DV, 9 LEADS